

Converting Colors

Yxy(60.1682, 0.3436, 0.3496)

Have a look what the booklet for
Yxy(60.1682, 0.3436, 0.3496)
contains.

Yxy(60.2155, 0.3439, 0.3497)	3
Conversions	4
Details	6
Harmonies	12
Previews	24
Color Blindness Simulation	27
CSS Examples	30

Color

Yxy(60.2155, 0.3439, 0.3497)

Conversions

Conversions Part 1

Format	Color
Hex	DEC8B6
RGB	222, 200, 182
RGB Percent	87%, 78%, 71%
CMY	0.1295, 0.2156, 0.2863
CMYK	0.00, 0.10, 0.18, 0.13
HSL	27°, 38%, 79%
HSV	27°, 18%, 87%
XYZ	59.2168, 60.2155, 52.7596
YIQ	204.5260, 18.8900, -0.9340

Conversions

Conversions Part 2

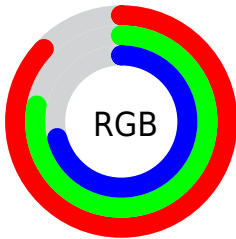
Format	Color
RYB	222, 215, 182
Decimal	14600374
CIELab	81.96, 4.82, 11.80
CIELCh	82, 12.748, 67.769
Yxy	60.2155, 0.3439, 0.3497
Android (android.graphics.Color)	4292790454 (0xFFDEC8B6)
YUV	204.5260, -11.1053, 15.3247
Hunter-Lab	77.5986, 0.4186, 14.0076

Details

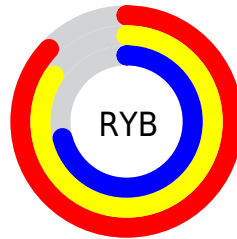
The Yxy color $60.2155, 0.3439, 0.3497$ is a light color, and the websafe version is hex `CCCCCC`. A complement of this color would be $58.3891, 0.2846, 0.3074$, and the grayscale version is $60.7966, 0.3127, 0.3290$.

A 20% lighter version of the original color is $98.9530, 0.3226, 0.3454$, and $30.3582, 0.3527, 0.3548$ is the 20% darker color. If you saturate the color by 10%, you get $53.9452, 0.3649, 0.3619$, and if you desaturate by 10%, it is $67.0875, 0.3256, 0.3379$.

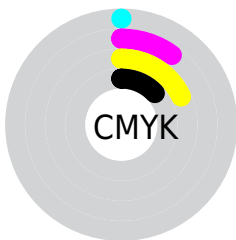
Distribution



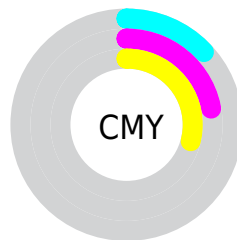
- Red (87%)
- Green (78%)
- Blue (71%)



- Red (87%)
- Yellow (84%)
- Blue (71%)



- Cyan (0%)
- Magenta (10%)
- Yellow (18%)
- Black (13%)





- Cyan (13%)
- Magenta (22%)
- Yellow (29%)

Brightness & Saturation Gradients


These gradients show how the Yxy color 60.2155, 0.3439, 0.3497 changes by changing the brightness by 10 percent. The first figure shows a shift by +10% for each color and the second figure -10%.

Similar to the brightness gradients but the following saturation gradients show a change of the Yxy color 60.2155, 0.3439, 0.3497 by changing the saturation by 10% instead.

 60.2155, 0.3439,
0.3497

 60.2155, 0.3439,
0.3497


425.3916, 0.3289,
0.3399

 43.5924, 0.3475,
0.3520


 105.1422, 0.3386,
0.3463

 30.3502, 0.3520,
0.3548


134.2146, 0.3365,
0.3450

 20.1045, 0.3578,
0.3584


168.2055, 0.3348,
0.3438

 12.4710, 0.3656,
0.3632

207.4993, 0.3333,
0.3428

 7.0653, 0.3766,
0.3697

252.4804, 0.3320,
0.3420

 3.5030, 0.3933,
0.3793

303.5332, 0.3308,

 1.3996, 0.4261,

0.3412

0.3985

361.0422, 0.3298,
0.3405

0.2165, 0.5991,
0.4009

0.0000, 0.0000,
0.0000

60.2155, 0.3439,
0.3497

60.2155, 0.3439,
0.3497

53.9452, 0.3649,
0.3619

67.0875, 0.3256,
0.3379

48.2511, 0.3887,
0.3742

74.5695, 0.3097,
0.3269

43.1177, 0.4153,
0.3859

82.6800, 0.2961,
0.3166

38.5257, 0.4441,
0.3960

90.3747, 0.2927,
0.3227

■ 34.4543, 0.4740,
0.4033

■ 94.2659, 0.2929,
0.3289

■ 30.8812, 0.5034,
0.4066

■ 27.7814, 0.5303,
0.4047

■ 25.1244, 0.5528,
0.3976

■ 24.6414, 0.5571,
0.3959

Harmonies

Analogous

The Analogous color harmony consists of three colors that are next to each other on the color wheel.



60.2155, 0.3441, 0.3373



60.2155, 0.3439, 0.3497



60.2155, 0.3352, 0.3570

Triad

The Triadic color harmony groups three colors that are evenly spaced from another and form a triangle on the color wheel.



60.2155, 0.3439, 0.3497



60.2155, 0.2902, 0.3344



60.2155, 0.3043, 0.3031

Complementary

The Complementary color scheme is a pair of colors which are on the opposite of each other on the color wheel.



60.2155, 0.3439, 0.3497



58.3891, 0.2846, 0.3074

Split Complementary

Split-complementary colors differ from the complementary color scheme. The scheme consists of three colors, the original color and two neighbors of the complement color.



60.2155, 0.2903, 0.3018



60.2155, 0.3439, 0.3497



60.2155, 0.2824, 0.3194

Square

The Square scheme is like the rectangle color scheme, but the four colors are evenly spaced on the color wheel.



60.2155, 0.3439, 0.3497



60.2155, 0.3041, 0.3483



60.2155, 0.2824, 0.3075



60.2155, 0.3209, 0.3108

Rectangle

The Rectangle color scheme consists of four colors that form a rectangle on the color wheel.



60.2155, 0.3439, 0.3497



60.2155, 0.3258, 0.3577



60.2155, 0.2824, 0.3075



60.2155, 0.2992, 0.3018

Sweetspot

The Sweet Spot groups the original color and five complimentary colors.



60.2182, 0.3439, 0.3497



94.8171, 0.3206, 0.3346



53.3430, 0.3291, 0.3040



20.1425, 0.3218, 0.3354



0.0000, 0.0000, 0.0000



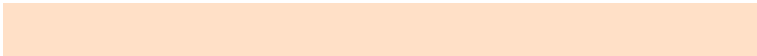
21.4041, 0.3127, 0.3290

Same Dimension

The Same Dimension uses a secret algorithm to generate beautiful new colors.



60.2182, 0.3439, 0.3497



78.7840, 0.3523, 0.3548



70.0784, 0.3401, 0.3715



14.7123, 0.3281, 0.3396



14.8552, 0.5546, 0.3978



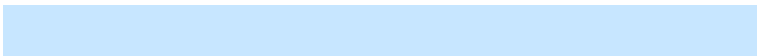
1.2066, 0.5286, 0.4185

Inverse Universe

The Inverse Universe completely reimagines the original color for something new.



58.3891, 0.2846, 0.3074



75.7895, 0.2779, 0.3018



49.5009, 0.2833, 0.2826



14.4855, 0.2981, 0.3182



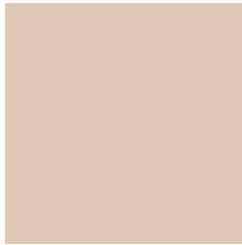
11.6230, 0.1820, 0.1752



0.9838, 0.1892, 0.2009

Previews

White Background



This preview shows how the Yxy color 60.2155, 0.3439, 0.3497 looks on a white background.

Color Contrast Check

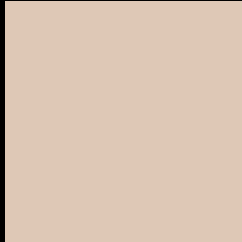
Large Text (above 18pt) WCAG AA × Fail

Any Text WCAG AA × Fail

Large Text (above 18pt) WCAG AAA × Fail

Any Text WCAG AAA × Fail

Black Background



This preview shows how the Yxy color 60.2155, 0.3439, 0.3497 looks on a black background.

Color Contrast Check

Large Text (above 18pt) WCAG AA ✓ Pass

Any Text WCAG AA ✓ Pass

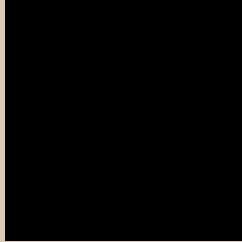
Large Text (above 18pt) WCAG AAA ✓ Pass

Any Text WCAG AAA ✓ Pass

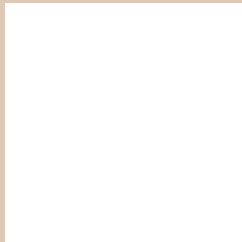
If you want to check with other color combinations, try the [Color Contrast Checker](#).

Yxy 60.2155, 0.3439, 0.3497

Background



This preview shows how black text looks on a background with the Yxy color 60.2155, 0.3439, 0.3497.



This preview shows how white text looks on a background with the Yxy color 60.2155, 0.3439, 0.3497.

Color Blindness Simulation

Color vision deficiency is a very complex topic, and I could not describe the different causes any better than Wikipedia does, so if you want to learn more, you should check out their [article about color blindness](#).

Dichromacy



Original Color

60.2155, 0.3439, 0.3497

Protanopia

60.1696, 0.3337, 0.3513

Deuteranopia

60.3403, 0.3512, 0.3448



Tritanopia

60.3518, 0.3254, 0.3124

Trichromacy



Original Color

60.2155, 0.3439, 0.3497

Protanomaly

60.2589, 0.3379, 0.3511

Deuteranomaly

60.3010, 0.3485, 0.3460

Tritanomaly

60.1102, 0.3329, 0.3257

Monochromacy



Original Color

60.2155, 0.3439, 0.3497

Achromatopsia

61.0496, 0.3127, 0.3290

Achromatomaly

60.5920, 0.3233, 0.3360

CSS Examples

Text

The CSS property to change the color of the text to Yxy 60.2155, 0.3439, 0.3497 is called "color". The color property can be set on classes, ids or directly on the HTML element.

This example shows how text in the color `rgb(222, 200, 182)` looks like.

```
.text, #text, p{  
    color:rgb(222, 200, 182)  
}
```

If you want to add a text shadow in that color use the text-shadow property, you can generate a text shadow directly with our [CSS Text Shadow Generator](#).

Here you see how black text with a 4 pixel rgb(222, 200, 182) colored shadow looks like.

```
.shadow{ text-shadow: 4px 4px 2px rgb(222, 200, 182) }
```

Border

The CSS property to change the border of an element to Yxy 60.2155, 0.3439, 0.3497 is called "border". The border property can be set on classes, ids or directly on the HTML element.

This example shows the color as border, it can be applied via the CSS property "border" or "border-color".

```
.border, #border, table{ border:4px solid rgb(222, 200, 182) }
```

If only the border color should be changed use the property `border-color`.

```
.border{ border-color:rgb(222, 200, 182) }
```

If you want to add a box shadow in that color use:

Here you see how a box with a 4 pixel `rgb(222, 200, 182)` colored shadow looks like.

```
.boxshadow{ -moz-box-shadow:4px 4px 4px 4px rgb(222, 200, 182); -webkit-box-shadow:4px 4px 4px 4px rgb(222, 200, 182); box-shadow:4px 4px 4px 4px rgb(222, 200, 182) }
```


Background

The CSS property to change the background color of an element to $\text{Yxy } 60.2155, 0.3439, 0.3497$ is called "background". The background property can be set on classes, ids or directly on the HTML element.

```
.background, #background, body{  
background: rgb(222, 200, 182) }
```

If only the background color should be changed can be used:

```
.background{ background-color: rgb(222,  
200, 182) }
```

This example shows the color as background, it is applied via the CSS property "background".

To optimize and compress your CSS code, you can use our [online CSS compressor and optimizer](#) based on csstidy. If you want to create a linear or radial gradient as background or border, check our [CSS Gradient Generator](#).

Hey! You found this booklet interesting? Support Converting Colors with the new Membership Option!

The pro membership hides all ads, plus gives you double the colors in the color bucket, and more awesome pro features!

[Learn more, Memberships starting at \\$2.50/m!](#)

**Follow me
on Twitter!**

@ConvertingColor