

Converting Colors

$Yxy(60.2982, 0.3362, 0.3284)$

Have a look what the booklet for
Yxy(60.2982, 0.3362, 0.3284)
contains.

Yxy(60.3406, 0.3361, 0.3280)	3
Conversions	4
Details	6
Harmonies	12
Previews	24
Color Blindness Simulation	27
CSS Examples	30

Color

Yxy(60.3406, 0.3361, 0.3280)

Conversions

Conversions Part 1

Format	Color
Hex	E3C5C6
RGB	227, 197, 198
RGB Percent	89%, 77%, 78%
CMY	0.1099, 0.2274, 0.2237
CMYK	0.00, 0.13, 0.13, 0.11
HSL	358°, 35%, 83%
HSV	358°, 13%, 89%
XYZ	61.8307, 60.3406, 61.7939
YIQ	206.0840, 17.5590, 6.6710

Conversions

Conversions Part 2

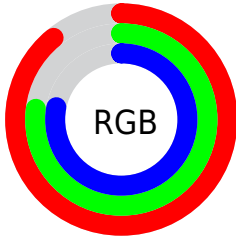
Format	Color
R _Y B	227, 197, 198
Decimal	14927302
CIE Lab	82.02, 10.72, 3.42
CIE LCh	82, 11.256, 17.681
Yxy	60.3406, 0.3361, 0.3280
Android (android.graphics.Color)	4293117382 (0xFFE3C5C6)
YUV	206.0840, -3.9854, 18.3433
Hunter-Lab	77.6792, 6.1429, 7.2102

Details

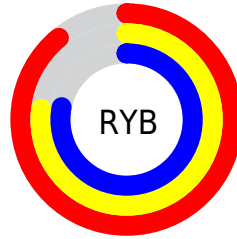
The Yxy color **60.3406, 0.3361, 0.3280** is a light color, and the websafe version is hex **FFCCCC**. A complement of this color would be **72.2942, 0.2932, 0.3300**, and the grayscale version is **61.7950, 0.3127, 0.3290**.

A 20% lighter version of the original color is **99.3636, 0.3128, 0.3281**, and **30.3165, 0.3420, 0.3276** is the 20% darker color. If you saturate the color by 10%, you get **49.8571, 0.3590, 0.3272**, and if you desaturate by 10%, it is **72.5287, 0.3178, 0.3288**.

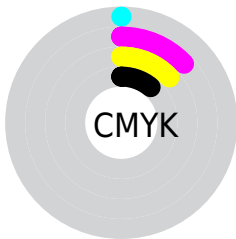
Distribution



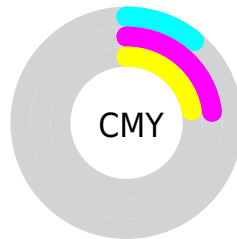
- Red (89%)
- Green (77%)
- Blue (78%)



- Red (89%)
- Yellow (77%)
- Blue (78%)



- Cyan (0%)
- Magenta (13%)
- Yellow (13%)
- Black (11%)




- Cyan (11%)
- Magenta (23%)
- Yellow (22%)

Brightness & Saturation Gradients


These gradients show how the Yxy color 60.3406, 0.3361, 0.3280 changes by changing the brightness by 10 percent. The first figure shows a shift by +10% for each color and the second figure -10%.

Similar to the brightness gradients but the following saturation gradients show a change of the Yxy color 60.3406, 0.3361, 0.3280 by changing the saturation by 10% instead.


 60.3406, 0.3361,
0.3280

 60.3406, 0.3361,
0.3280


425.8521, 0.3249,
0.3286

 43.6932, 0.3388,
0.3278


105.3236, 0.3321,
0.3282

 30.4294, 0.3422,
0.3276


134.4280, 0.3306,
0.3283

 20.1647, 0.3465,
0.3273

168.4535, 0.3293,
0.3284

 12.5149, 0.3524,
0.3269

207.7846, 0.3282,
0.3284

 7.0953, 0.3608,
0.3262

252.8056, 0.3272,
0.3285

 3.5218, 0.3736,
0.3250

303.9009, 0.3263,

 1.4098, 0.3957,

0.3285

0.3225

361.4549, 0.3255,
0.3285

0.2240, 0.6747,
0.3184

0.0000, 0.0000,
0.0000

60.3406, 0.3361,
0.3280

60.3406, 0.3361,
0.3280

49.8571, 0.3590,
0.3272

72.5287, 0.3178,
0.3288

40.9946, 0.3875,
0.3264

86.4839, 0.3031,
0.3295

33.6746, 0.4225,
0.3257

95.0682, 0.2958,
0.3290

27.8092, 0.4638,
0.3252

■ 23.3011, 0.5101,
0.3250

■ 20.0417, 0.5572,
0.3254

■ 17.9054, 0.5984,
0.3264

■ 16.7406, 0.6268,
0.3279

■ 16.3441, 0.6375,
0.3285

Harmonies

Analogous

The Analogous color harmony consists of three colors that are next to each other on the color wheel.



60.3406, 0.3246, 0.3162



60.3406, 0.3361, 0.3280



60.3406, 0.3412, 0.3403

Triad

The Triadic color harmony groups three colors that are evenly spaced from another and form a triangle on the color wheel.



60.3406, 0.3361, 0.3280



60.3406, 0.3148, 0.3516



60.3406, 0.2875, 0.3077

Complementary

The Complementary color scheme is a pair of colors which are on the opposite of each other on the color wheel.



60.3406, 0.3361, 0.3280



72.2942, 0.2932, 0.3300

Split Complementary

Split-complementary colors differ from the complementary color scheme. The scheme consists of three colors, the original color and two neighbors of the complement color.



60.3406, 0.2851, 0.3167



60.3406, 0.3361, 0.3280



60.3406, 0.3006, 0.3423

Square

The Square scheme is like the rectangle color scheme, but the four colors are evenly spaced on the color wheel.



60.3406, 0.3361, 0.3280



60.3406, 0.3287, 0.3544



60.3406, 0.2898, 0.3294



60.3406, 0.2966, 0.3046

Rectangle

The Rectangle color scheme consists of four colors that form a rectangle on the color wheel.



60.3406, 0.3361, 0.3280



60.3406, 0.3402, 0.3473



60.3406, 0.2898, 0.3294



60.3406, 0.2859, 0.3101

Sweetspot

The Sweet Spot groups the original color and five complimentary colors.



60.3433, 0.3361, 0.3280



93.0440, 0.3191, 0.3287



61.6507, 0.3135, 0.2964



19.6442, 0.3204, 0.3287



0.0000, 0.0000, 0.0000



21.4041, 0.3127, 0.3290

Same Dimension

The Same Dimension uses a secret algorithm to generate beautiful new colors.



60.3433, 0.3361, 0.3280



74.3863, 0.3422, 0.3278



66.9489, 0.3347, 0.3445



14.3754, 0.3288, 0.3283



9.5367, 0.6366, 0.3280



0.7074, 0.6268, 0.3227

Inverse Universe

The Inverse Universe completely reimagines the original color for something new.



60.3433, 0.3361, 0.3280



74.3863, 0.3422, 0.3278



65.0051, 0.2922, 0.3130



14.3754, 0.3288, 0.3283



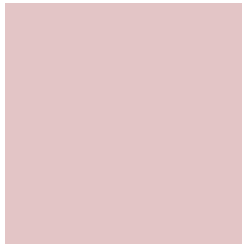
9.5367, 0.6366, 0.3280



0.7074, 0.6268, 0.3227

Previews

White Background



This preview shows how the Yxy color 60.3406, 0.3361, 0.3280 looks on a white background.

Color Contrast Check

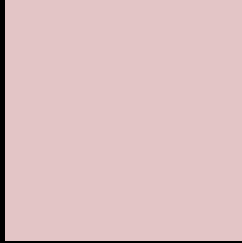
Large Text (above 18pt) WCAG AA × Fail

Any Text WCAG AA × Fail

Large Text (above 18pt) WCAG AAA × Fail

Any Text WCAG AAA × Fail

Black Background



This preview shows how the Yxy color 60.3406, 0.3361, 0.3280 looks on a black background.

Color Contrast Check

Large Text (above 18pt) WCAG AA ✓ Pass

Any Text WCAG AA ✓ Pass

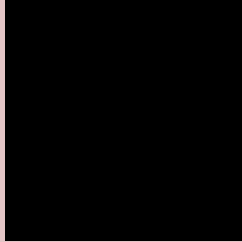
Large Text (above 18pt) WCAG AAA ✓ Pass

Any Text WCAG AAA ✓ Pass

If you want to check with other color combinations, try the [Color Contrast Checker](#).

Yxy 60.3406, 0.3361, 0.3280

Background



This preview shows how black text looks on a background with the Yxy color 60.3406, 0.3361, 0.3280.



This preview shows how white text looks on a background with the Yxy color 60.3406, 0.3361, 0.3280.

Color Blindness Simulation

Color vision deficiency is a very complex topic, and I could not describe the different causes any better than Wikipedia does, so if you want to learn more, you should check out their [article about color blindness](#).

Dichromacy



Original Color

60.3406, 0.3361, 0.3280

Protanopia

60.3388, 0.3180, 0.3313

Deuteranopia

60.1785, 0.3353, 0.3279



Tritanopia

60.3414, 0.3287, 0.3125

Trichromacy



Original Color

60.3406, 0.3361, 0.3280

Protanomaly

60.3905, 0.3244, 0.3302

Deuteranomaly

60.1785, 0.3353, 0.3279

Tritanomaly

60.4301, 0.3308, 0.3180

Monochromacy



Original Color

60.3406, 0.3361, 0.3280

Achromatopsia

61.7207, 0.3127, 0.3290

Achromatomaly

61.3198, 0.3212, 0.3290

CSS Examples

Text

The CSS property to change the color of the text to Yxy 60.3406, 0.3361, 0.3280 is called "color". The color property can be set on classes, ids or directly on the HTML element.

This example shows how text in the color `rgb(227, 197, 198)` looks like.

```
.text, #text, p{  
    color:rgb(227, 197, 198)  
}
```

If you want to add a text shadow in that color use the text-shadow property, you can generate a text shadow directly with our [CSS Text Shadow Generator](#).

Here you see how black text with a 4 pixel rgb(227, 197, 198) colored shadow looks like.

```
.shadow{ text-shadow: 4px 4px 2px rgb(227, 197, 198) }
```

Border

The CSS property to change the border of an element to Yxy 60.3406, 0.3361, 0.3280 is called "border". The border property can be set on classes, ids or directly on the HTML element.

This example shows the color as border, it can be applied via the CSS property "border" or "border-color".

```
.border, #border, table{ border:4px solid rgb(227, 197, 198) }
```

If only the border color should be changed use the property `border-color`.

```
.border{ border-color:rgb(227, 197, 198) }
```

If you want to add a box shadow in that color use:

Here you see how a box with a 4 pixel `rgb(227, 197, 198)` colored shadow looks like.

```
.boxshadow{ -moz-box-shadow:4px 4px 4px  
4px rgb(227, 197, 198); -webkit-box-  
shadow:4px 4px 4px 4px rgb(227, 197, 198);  
box-shadow:4px 4px 4px 4px rgb(227, 197,  
198) }
```


Background

The CSS property to change the background color of an element to Yxy 60.3406, 0.3361, 0.3280 is called "background". The background property can be set on classes, ids or directly on the HTML element.

```
.background, #background, body{  
background: rgb(227, 197, 198) }
```

If only the background color should be changed can be used:

```
.background{ background-color: rgb(227,  
197, 198) }
```

This example shows the color as background, it is applied via the CSS property "background".

To optimize and compress your CSS code, you can use our [online CSS compressor and optimizer](#) based on csstidy. If you want to create a linear or radial gradient as background or border, check our [CSS Gradient Generator](#).

Hey! You found this booklet interesting? Support Converting Colors with the new Membership Option!

The pro membership hides all ads, plus gives you double the colors in the color bucket, and more awesome pro features!

[Learn more, Memberships starting at \\$2.50/m!](#)

**Follow me
on Twitter!**

@ConvertingColor