

Converting Colors

Yxy(60.3081, 0.3397, 0.3426)

Have a look what the booklet for
Yxy(60.3081, 0.3397, 0.3426)
contains.

Yxy(60.4690, 0.3393, 0.3428)	3
<i>Conversions</i>	4
<i>Details</i>	6
<i>Harmonies</i>	12
<i>Previews</i>	24
<i>Color Blindness Simulation</i>	27
<i>CSS Examples</i>	30

Color

Yxy(60.4690, 0.3393, 0.3428)

Conversions

Conversions Part 1

Format	Color
Hex	DEC8BC
RGB	222, 200, 188
RGB Percent	87%, 78%, 74%
CMY	0.1294, 0.2156, 0.2629
CMYK	0.00, 0.10, 0.15, 0.13
HSL	21°, 34%, 80%
HSV	21°, 15%, 87%
XYZ	59.8516, 60.4690, 56.0767
YIQ	205.2100, 16.9640, 0.9320

Conversions

Conversions Part 2

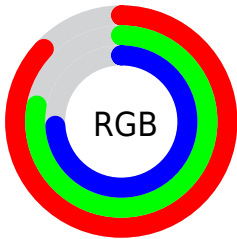
Format	Color
R _Y B	222, 207, 188
Decimal	14600380
CIE Lab	82.09, 5.75, 8.81
CIE LCh	82, 10.522, 56.864
Yxy	60.4690, 0.3393, 0.3428
Android (android.graphics.Color)	4292790460 (0xFFDEC8BC)
YUV	205.2100, -8.4845, 14.7248
Hunter-Lab	77.7618, 1.3045, 11.6772

Details

The Yxy color **60.4690, 0.3393, 0.3428** is a light color, and the websafe version is hex **CCCCCC**. A complement of this color would be **62.0324, 0.2890, 0.3148**, and the grayscale version is **61.2379, 0.3127, 0.3290**.

A 20% lighter version of the original color is **99.3117, 0.3191, 0.3396**, and **30.5225, 0.3464, 0.3456** is the 20% darker color. If you saturate the color by 10%, you get **53.2509, 0.3605, 0.3524**, and if you desaturate by 10%, it is **68.4632, 0.3212, 0.3336**.

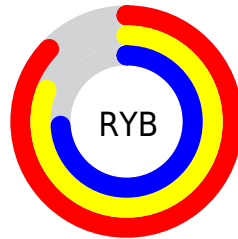
Distribution



Red (87%)

Green (78%)

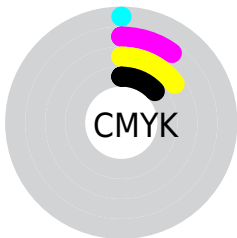
Blue (74%)



Red (87%)

Yellow (81%)

Blue (74%)

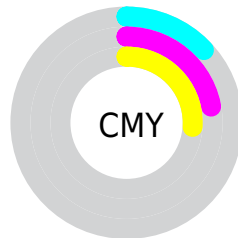


Cyan (0%)

Magenta (10%)

Yellow (15%)

Black (13%)



Cyan (13%)


Magenta (22%)


Yellow (26%)

Brightness & Saturation Gradients

These gradients show how the Yxy color 60.4690, 0.3393, 0.3428 changes by changing the brightness by 10 percent. The first figure shows a shift by +10% for each color and the second figure -10%.

Similar to the brightness gradients but the following saturation gradients show a change of the Yxy color 60.4690, 0.3393, 0.3428 by changing the saturation by 10% instead.


 60.4690, 0.3393,
0.3428

 60.4690, 0.3393,
0.3428

426.3243, 0.3265,
0.3363

 43.7968, 0.3423,
0.3443


 105.5097, 0.3348,
0.3405

 30.5108, 0.3462,
0.3462


134.6470, 0.3330,
0.3397

 20.2266, 0.3511,
0.3485


168.7081, 0.3316,
0.3389

 12.5599, 0.3578,
0.3517

208.0773, 0.3303,
0.3383

 7.1262, 0.3673,
0.3560

253.1392, 0.3292,
0.3377

 3.5411, 0.3818,
0.3622

304.2781, 0.3282,

 1.4203, 0.4069,

0.3372

0.3724

361.8783, 0.3273,
0.3367

0.2316, 0.6089,
0.3911

0.0000, 0.0000,
0.0000

60.4690, 0.3393,
0.3428

60.4690, 0.3393,
0.3428

53.2509, 0.3605,
0.3524

68.4632, 0.3212,
0.3336

46.7770, 0.3852,
0.3622

77.2480, 0.3058,
0.3251

41.0249, 0.4135,
0.3716

86.8478, 0.2928,
0.3172

35.9681, 0.4452,
0.3799

94.2688, 0.2929,
0.3289

■ 31.5783, 0.4792,
0.3858

■ 27.8248, 0.5138,
0.3883

■ 24.6743, 0.5462,
0.3860

■ 22.0891, 0.5734,
0.3787

■ 21.0566, 0.5844,
0.3742

Harmonies

Analogous

The Analogous color harmony consists of three colors that are next to each other on the color wheel.



60.4690, 0.3367, 0.3317



60.4690, 0.3393, 0.3428



60.4690, 0.3346, 0.3506

Triad

The Triadic color harmony groups three colors that are evenly spaced from another and form a triangle on the color wheel.



60.4690, 0.3393, 0.3428



60.4690, 0.2978, 0.3379



60.4690, 0.3012, 0.3064

Complementary

The Complementary color scheme is a pair of colors which are on the opposite of each other on the color wheel.



60.4690, 0.3393, 0.3428



62.0324, 0.2890, 0.3148

Split Complementary

Split-complementary colors differ from the complementary color scheme. The scheme consists of three colors, the original color and two neighbors of the complement color.



60.4690, 0.2912, 0.3076



60.4690, 0.3393, 0.3428



60.4690, 0.2893, 0.3255

Square

The Square scheme is like the rectangle color scheme, but the four colors are evenly spaced on the color wheel.



60.4690, 0.3393, 0.3428



60.4690, 0.3105, 0.3480



60.4690, 0.2868, 0.3144



60.4690, 0.3145, 0.3111

Rectangle

The Rectangle color scheme consists of four colors that form a rectangle on the color wheel.



60.4690, 0.3393, 0.3428



60.4690, 0.3280, 0.3526



60.4690, 0.2868, 0.3144



60.4690, 0.2973, 0.3062

Sweetspot

The Sweet Spot groups the original color and five complimentary colors.



60.4717, 0.3393, 0.3428



94.0617, 0.3207, 0.3334



56.1402, 0.3236, 0.3041



19.9592, 0.3219, 0.3340



0.0000, 0.0000, 0.0000



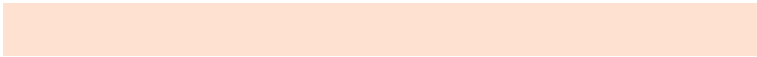
21.4041, 0.3127, 0.3290

Same Dimension

The Same Dimension uses a secret algorithm to generate beautiful new colors.



60.4717, 0.3393, 0.3428



79.9039, 0.3449, 0.3455



68.7281, 0.3365, 0.3614



14.4901, 0.3283, 0.3374



12.6979, 0.5817, 0.3763



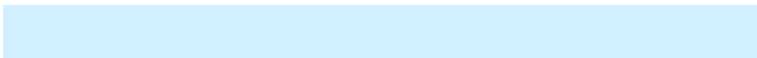
1.0448, 0.5522, 0.3998

Inverse Universe

The Inverse Universe completely reimagines the original color for something new.



62.0324, 0.2890, 0.3148



82.3814, 0.2846, 0.3119



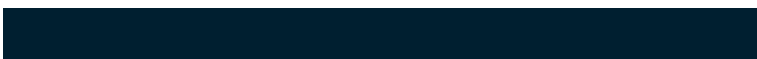
54.1341, 0.2882, 0.2944



14.7135, 0.2982, 0.3205



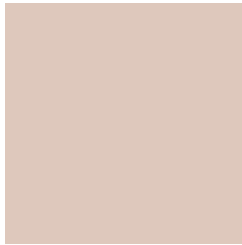
15.0973, 0.1915, 0.2093



1.2132, 0.1972, 0.2298

Previews

White Background



This preview shows how the Yxy color 60.4690, 0.3393, 0.3428 looks on a white background.

Color Contrast Check

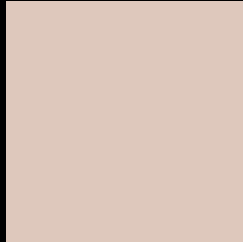
Large Text (above 18pt) WCAG AA × Fail

Any Text WCAG AA × Fail

Large Text (above 18pt) WCAG AAA × Fail

Any Text WCAG AAA × Fail

Black Background



This preview shows how the Yxy color 60.4690, 0.3393, 0.3428 looks on a black background.

Color Contrast Check

Large Text (above 18pt) WCAG AA ✓ Pass

Any Text WCAG AA ✓ Pass

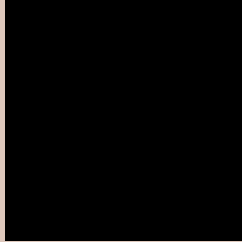
Large Text (above 18pt) WCAG AAA ✓ Pass

Any Text WCAG AAA ✓ Pass

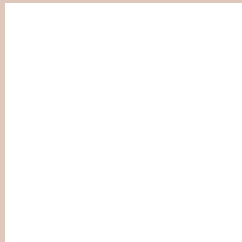
If you want to check with other color combinations, try the [Color Contrast Checker](#).

Yxy 60.4690, 0.3393, 0.3428

Background



This preview shows how black text looks on a background with the Yxy color 60.4690, 0.3393, 0.3428.



This preview shows how white text looks on a background with the Yxy color 60.4690, 0.3393, 0.3428.

Color Blindness Simulation

Color vision deficiency is a very complex topic, and I could not describe the different causes any better than Wikipedia does, so if you want to learn more, you should check out their [article about color blindness](#).

Dichromacy



Original Color

60.4690, 0.3393, 0.3428

Protanopia

60.2785, 0.3284, 0.3442

Deuteranopia

60.4296, 0.3456, 0.3380



Tritanopia

60.2409, 0.3239, 0.3113

Trichromacy



Original Color

60.4690, 0.3393, 0.3428

Protanomaly

60.3623, 0.3325, 0.3441

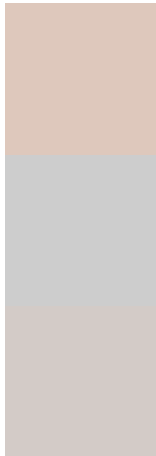
Deuteranomaly

60.3932, 0.3430, 0.3392

Tritanomaly

60.0916, 0.3298, 0.3223

Monochromacy



Original Color

60.4690, 0.3393, 0.3428

Achromatopsia

61.0496, 0.3127, 0.3290

Achromatomaly

60.6843, 0.3218, 0.3337

CSS Examples

Text

The CSS property to change the color of the text to Yxy 60.4690, 0.3393, 0.3428 is called "color". The color property can be set on classes, ids or directly on the HTML element.

This example shows how text in the color `rgb(222, 200, 188)` looks like.

```
.text, #text, p{  
    color:rgb(222, 200, 188)  
}
```

If you want to add a text shadow in that color use the text-shadow property, you can generate a text shadow directly with our [CSS Text Shadow Generator](#).

Here you see how black text with a 4 pixel rgb(222, 200, 188) colored shadow looks like.

```
.shadow{ text-shadow: 4px 4px 2px rgb(222, 200, 188) }
```

Border

The CSS property to change the border of an element to Yxy 60.4690, 0.3393, 0.3428 is called "border". The border property can be set on classes, ids or directly on the HTML element.

This example shows the color as border, it can be applied via the CSS property "border" or "border-color".

```
.border, #border, table{ border:4px solid rgb(222, 200, 188) }
```

If only the border color should be changed use the property border-color.

```
.border{ border-color:rgb(222, 200, 188) }
```

If you want to add a box shadow in that color use:

Here you see how a box with a 4 pixel rgb(222, 200, 188) colored shadow looks like.

```
.boxshadow{ -moz-box-shadow:4px 4px 4px  
4px rgb(222, 200, 188); -webkit-box-  
shadow:4px 4px 4px 4px rgb(222, 200, 188);  
box-shadow:4px 4px 4px 4px rgb(222, 200,  
188) }
```


Background

The CSS property to change the background color of an element to Yxy 60.4690, 0.3393, 0.3428 is called "background". The background property can be set on classes, ids or directly on the HTML element.

```
.background, #background, body{  
background: rgb(222, 200, 188) }
```

If only the background color should be changed can be used:

```
.background{ background-color: rgb(222,  
200, 188) }
```

This example shows the color as background, it is applied via the CSS property "background".

To optimize and compress your CSS code, you can use our [online CSS compressor and optimizer](#) based on csstidy. If you want to create a linear or radial gradient as background or border, check our [CSS Gradient Generator](#).

Hey! You found this booklet interesting? Support Converting Colors with the new Membership Option!

The pro membership hides all ads, plus gives you double the colors in the color bucket, and more awesome pro features!

[Learn more, Memberships starting at \\$2.50/m!](#)

**Follow me
on Twitter!**

@ConvertingColor