

Converting Colors

$Yxy(60.3179, 0.3290, 0.3352)$

Have a look what the booklet for
Yxy(60.3179, 0.3290, 0.3352)
contains.

Yxy(60.3123, 0.3290, 0.3360)	3
Conversions	4
Details	6
Harmonies	12
Previews	24
Color Blindness Simulation	27
CSS Examples	30

Color

Yxy(60.3123, 0.3290, 0.3360)

Conversions

Conversions Part 1

Format	Color
Hex	D8C9C3
RGB	216, 201, 195
RGB Percent	85%, 79%, 76%
CMY	0.1529, 0.2118, 0.2355
CMYK	0.00, 0.07, 0.10, 0.15
HSL	17°, 21%, 81%
HSV	17°, 10%, 85%
XYZ	59.0558, 60.3123, 60.1328
YIQ	204.8010, 10.8660, 1.3140

Conversions

Conversions Part 2

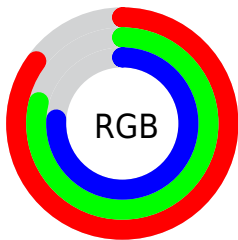
Format	Color
R _Y B	216, 203, 195
Decimal	14207427
CIE Lab	82.01, 4.21, 4.89
CIE LCh	82, 6.452, 49.273
Yxy	60.3123, 0.3290, 0.3360
Android (android.graphics.Color)	4292397507 (0xFFD8C9C3)
YUV	204.8010, -4.8319, 9.8215
Hunter-Lab	77.6610, -0.1699, 8.4545

Details

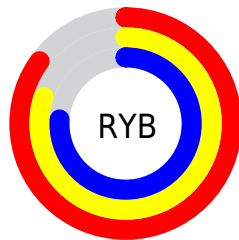
The Yxy color $60.3123, 0.3290, 0.3360$ is a light color, and the websafe version is hex `CCCCCC`. A complement of this color would be $62.6352, 0.2977, 0.3219$, and the grayscale version is $60.9446, 0.3127, 0.3290$.

A 20% lighter version of the original color is $99.8083, 0.3144, 0.3319$, and $30.3676, 0.3334, 0.3382$ is the 20% darker color. If you saturate the color by 10%, you get $52.5833, 0.3488, 0.3437$, and if you desaturate by 10%, it is $68.9079, 0.3123, 0.3288$.

Distribution



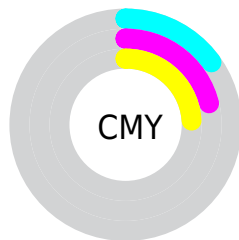
- Red (85%)
- Green (79%)
- Blue (76%)



- Red (85%)
- Yellow (80%)
- Blue (76%)



- Cyan (0%)
- Magenta (7%)
- Yellow (10%)
- Black (15%)



- Cyan (15%)
- Magenta (21%)
- Yellow (24%)

Brightness & Saturation Gradients

These gradients show how the Yxy color 60.3123, 0.3290, 0.3360 changes by changing the brightness by 10 percent. The first figure shows a shift by +10% for each color and the second figure -10%.

Similar to the brightness gradients but the following saturation gradients show a change of the Yxy color 60.3123, 0.3290, 0.3360 by changing the saturation by 10% instead.

■ 60.3123, 0.3290,
0.3360

■ 60.3123, 0.3290,
0.3360

425.7479, 0.3212,
0.3327

■ 43.6704, 0.3309,
0.3368

105.2826, 0.3262,
0.3348

■ 30.4115, 0.3332,
0.3377

134.3797, 0.3252,
0.3344

■ 20.1511, 0.3362,
0.3390

168.3974, 0.3243,
0.3340

■ 12.5049, 0.3403,
0.3406

207.7201, 0.3235,
0.3337

■ 7.0885, 0.3462,
0.3429

252.7321, 0.3228,
0.3334

■ 3.5175, 0.3551,
0.3462

303.8178, 0.3222,

■ 1.4075, 0.3704,

0.3331

0.3516

361.3616, 0.3217,
0.3329

0.2223, 0.5855,
0.4145

0.0000, 0.0000,
0.0000

60.3123, 0.3290,
0.3360

60.3123, 0.3290,
0.3360

52.5833, 0.3488,
0.3437

68.9079, 0.3123,
0.3288

45.6859, 0.3724,
0.3516

78.3880, 0.2983,
0.3222

39.5941, 0.4000,
0.3595

88.4695, 0.2891,
0.3209

34.2775, 0.4318,
0.3668

93.3418, 0.2894,
0.3289

■ 29.7041, 0.4672,
0.3726

■ 25.8392, 0.5048,
0.3758

■ 22.6451, 0.5419,
0.3752

■ 20.0802, 0.5747,
0.3701

■ 18.0914, 0.6004,
0.3612

Harmonies

Analogous

The Analogous color harmony consists of three colors that are next to each other on the color wheel.



60.3123, 0.3263, 0.3289



60.3123, 0.3290, 0.3360



60.3123, 0.3272, 0.3414

Triad

The Triadic color harmony groups three colors that are evenly spaced from another and form a triangle on the color wheel.



60.3123, 0.3290, 0.3360



60.3123, 0.3054, 0.3362



60.3123, 0.3038, 0.3149

Complementary

The Complementary color scheme is a pair of colors which are on the opposite of each other on the color wheel.



60.3123, 0.3290, 0.3360



62.6352, 0.2977, 0.3219

Split Complementary

Split-complementary colors differ from the complementary color scheme. The scheme consists of three colors, the original color and two neighbors of the complement color.



60.3123, 0.2984, 0.3166



60.3123, 0.3290, 0.3360



60.3123, 0.2993, 0.3289

Square

The Square scheme is like the rectangle color scheme, but the four colors are evenly spaced on the color wheel.



60.3123, 0.3290, 0.3360



60.3123, 0.3135, 0.3416



60.3123, 0.2967, 0.3217



60.3123, 0.3117, 0.3168

Rectangle

The Rectangle color scheme consists of four colors that form a rectangle on the color wheel.



60.3123, 0.3290, 0.3360



60.3123, 0.3238, 0.3432



60.3123, 0.2967, 0.3217



60.3123, 0.3017, 0.3150

Sweetspot

The Sweet Spot groups the original color and five complimentary colors.



60.3150, 0.3290, 0.3360



96.0864, 0.3175, 0.3311



58.2688, 0.3183, 0.3118



20.3468, 0.3188, 0.3317



0.0000, 0.0000, 0.0000



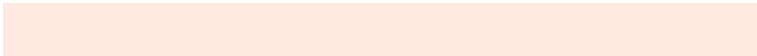
21.4041, 0.3127, 0.3290

Same Dimension

The Same Dimension uses a secret algorithm to generate beautiful new colors.



60.3150, 0.3290, 0.3360



85.0456, 0.3334, 0.3378



65.3552, 0.3277, 0.3478



12.9957, 0.3284, 0.3358



10.8414, 0.5983, 0.3631



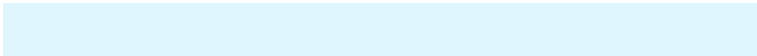
0.7950, 0.5638, 0.3905

Inverse Universe

The Inverse Universe completely reimagines the original color for something new.



62.6352, 0.2977, 0.3219



89.1743, 0.2941, 0.3201



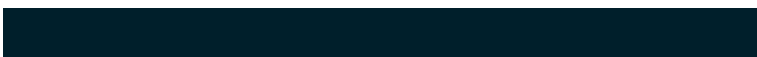
57.6424, 0.2976, 0.3095



13.4774, 0.2982, 0.3222



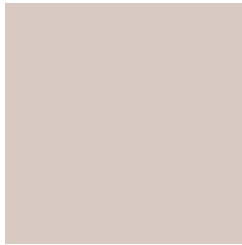
16.8061, 0.1982, 0.2333



1.1521, 0.2033, 0.2518

Previews

White Background



This preview shows how the Yxy color 60.3123, 0.3290, 0.3360 looks on a white background.

Color Contrast Check

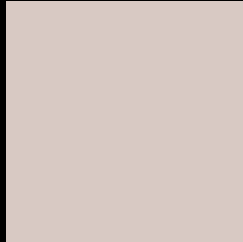
Large Text (above 18pt) WCAG AA × Fail

Any Text WCAG AA × Fail

Large Text (above 18pt) WCAG AAA × Fail

Any Text WCAG AAA × Fail

Black Background



This preview shows how the Yxy color 60.3123, 0.3290, 0.3360 looks on a black background.

Color Contrast Check

Large Text (above 18pt) WCAG AA ✓ Pass

Any Text WCAG AA ✓ Pass

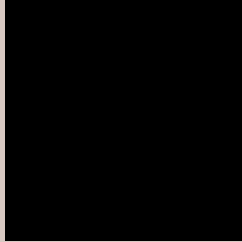
Large Text (above 18pt) WCAG AAA ✓ Pass

Any Text WCAG AAA ✓ Pass

If you want to check with other color combinations, try the [Color Contrast Checker](#).

Yxy 60.3123, 0.3290, 0.3360

Background



This preview shows how black text looks on a background with the Yxy color 60.3123, 0.3290, 0.3360.



This preview shows how white text looks on a background with the Yxy color 60.3123, 0.3290, 0.3360.

Color Blindness Simulation

Color vision deficiency is a very complex topic, and I could not describe the different causes any better than Wikipedia does, so if you want to learn more, you should check out their [article about color blindness](#).

Dichromacy



Original Color

60.3123, 0.3290, 0.3360

Protanopia

60.2527, 0.3224, 0.3372

Deuteranopia

60.2489, 0.3376, 0.3302



Tritanopia

60.3033, 0.3175, 0.3111

Trichromacy



Original Color

60.3123, 0.3290, 0.3360

Protanomaly

60.2236, 0.3249, 0.3360

Deuteranomaly

60.0617, 0.3342, 0.3313

Tritanomaly

60.2573, 0.3218, 0.3200

Monochromacy



Original Color

60.3123, 0.3290, 0.3360

Achromatopsia

61.0496, 0.3127, 0.3290

Achromatomaly

60.9581, 0.3187, 0.3325

CSS Examples

Text

The CSS property to change the color of the text to Yxy 60.3123, 0.3290, 0.3360 is called "color". The color property can be set on classes, ids or directly on the HTML element.

This example shows how text in the color `rgb(216, 201, 195)` looks like.

```
.text, #text, p{  
    color:rgb(216, 201, 195)  
}
```

If you want to add a text shadow in that color use the text-shadow property, you can generate a text shadow directly with our [CSS Text Shadow Generator](#).

Here you see how black text with a 4 pixel rgb(216, 201, 195) colored shadow looks like.

```
.shadow{ text-shadow: 4px 4px 2px rgb(216, 201, 195) }
```

Border

The CSS property to change the border of an element to Yxy 60.3123, 0.3290, 0.3360 is called "border". The border property can be set on classes, ids or directly on the HTML element.

This example shows the color as border, it can be applied via the CSS property "border" or "border-color".

```
.border, #border, table{ border:4px solid rgb(216, 201, 195) }
```

If only the border color should be changed use the property border-color.

```
.border{ border-color:rgb(216, 201, 195) }
```

If you want to add a box shadow in that color use:

Here you see how a box with a 4 pixel rgb(216, 201, 195) colored shadow looks like.

```
.boxshadow{ -moz-box-shadow:4px 4px 4px  
4px rgb(216, 201, 195); -webkit-box-  
shadow:4px 4px 4px 4px rgb(216, 201, 195);  
box-shadow:4px 4px 4px 4px rgb(216, 201,  
195) }
```


Background

The CSS property to change the background color of an element to Yxy 60.3123, 0.3290, 0.3360 is called "background". The background property can be set on classes, ids or directly on the HTML element.

```
.background, #background, body{  
background: rgb(216, 201, 195) }
```

If only the background color should be changed can be used:

```
.background{ background-color: rgb(216,  
201, 195) }
```

This example shows the color as background, it is applied via the CSS property "background".

To optimize and compress your CSS code, you can use our [online CSS compressor and optimizer](#) based on csstidy. If you want to create a linear or radial gradient as background or border, check our [CSS Gradient Generator](#).

Hey! You found this booklet interesting? Support Converting Colors with the new Membership Option!

The pro membership hides all ads, plus gives you double the colors in the color bucket, and more awesome pro features!

[Learn more, Memberships starting at \\$2.50/m!](#)

**Follow me
on Twitter!**

@ConvertingColor