

Converting Colors

Yxy(60.3332, 0.3534, 0.3599)

Have a look what the booklet for
Yxy(60.3332, 0.3534, 0.3599)
contains.

Yxy(60.3332, 0.3534, 0.3599)	3
Conversions	4
Details	6
Harmonies	12
Previews	24
Color Blindness Simulation	27
CSS Examples	30

Color

Yxy(60.3332, 0.3534, 0.3599)

Conversions

Conversions Part 1

Format	Color
Hex	E1C8AD
RGB	225, 200, 173
RGB Percent	88%, 78%, 68%
CMY	0.1177, 0.2156, 0.3215
CMYK	0.00, 0.11, 0.23, 0.12
HSL	31°, 46%, 78%
HSV	31°, 23%, 88%
XYZ	59.2435, 60.3332, 48.0620
YIQ	204.3970, 23.5670, -3.0970

Conversions

Conversions Part 2

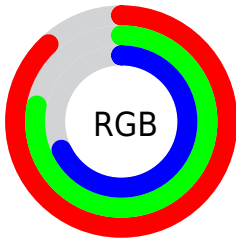
Format	Color
R _Y B	221, 225, 173
Decimal	14796973
CIE Lab	82.02, 4.61, 16.72
CIE LCh	82, 17.342, 74.576
Yxy	60.3332, 0.3534, 0.3599
Android (android.graphics.Color)	4292987053 (0xFFE1C8AD)
YUV	204.3970, -15.4787, 18.0688
Hunter-Lab	77.6744, 0.2145, 17.6857

Details

The Yxy color $60.3332, 0.3534, 0.3599$ is a light color, and the websafe version is hex `CCCC99`. A complement of this color would be $54.6961, 0.2760, 0.2960$, and the grayscale version is $60.7368, 0.3127, 0.3290$.

A 20% lighter version of the original color is $98.3814, 0.3286, 0.3552$, and $30.3733, 0.3633, 0.3667$ is the 20% darker color. If you saturate the color by 10%, you get $54.7062, 0.3748, 0.3740$, and if you desaturate by 10%, it is $66.4662, 0.3343, 0.3461$.

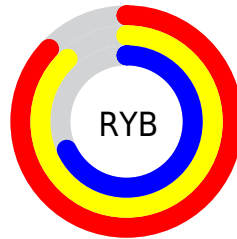
Distribution



Red (88%)

Green (78%)

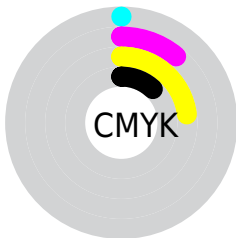
Blue (68%)



Red (87%)

Yellow (88%)

Blue (68%)

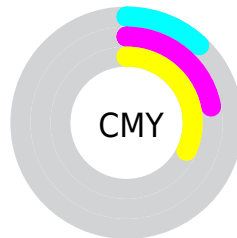


Cyan (0%)

Magenta (11%)

Yellow (23%)

Black (12%)



Cyan (12%)


Magenta (22%)


Yellow (32%)

Brightness & Saturation Gradients

These gradients show how the Yxy color 60.3332, 0.3534, 0.3599 changes by changing the brightness by 10 percent. The first figure shows a shift by +10% for each color and the second figure -10%.


Similar to the brightness gradients but the following saturation gradients show a change of the Yxy color 60.3332, 0.3534, 0.3599 by changing the saturation by 10% instead.

 60.3332, 0.3534,
0.3599

 60.3332, 0.3534,
0.3599


425.8248, 0.3339,
0.3453

 43.6873, 0.3580,
0.3633


 105.3129, 0.3465,
0.3548

 30.4247, 0.3638,
0.3675


134.4154, 0.3438,
0.3528

 20.1612, 0.3713,
0.3728


168.4389, 0.3416,
0.3511

 12.5123, 0.3813,
0.3798

207.7677, 0.3396,
0.3497

 7.0936, 0.3953,
0.3893

252.7864, 0.3379,
0.3484

 3.5207, 0.4160,
0.4027

303.8792, 0.3364,

 1.4092, 0.4701,

0.3473

0.4420

361.4305, 0.3351,
0.3462

0.2235, 0.5925,
0.4075

0.0000, 0.0000,
0.0000

60.3332, 0.3534,
0.3599

60.3332, 0.3534,
0.3599

54.7062, 0.3748,
0.3740

66.4662, 0.3343,
0.3461

49.5623, 0.3986,
0.3878

73.1110, 0.3175,
0.3329

44.8890, 0.4242,
0.4004

80.2833, 0.3028,
0.3206

40.6696, 0.4509,
0.4109

87.4700, 0.2944,
0.3170

■ 36.8862, 0.4774,
0.4178

■ 94.1388, 0.2946,
0.3280

■ 33.5192, 0.5023,
0.4201

■ 94.7438, 0.2946,
0.3289

■ 30.5461, 0.5239,
0.4169

■ 28.7041, 0.5367,
0.4120

Harmonies

Analogous

The Analogous color harmony consists of three colors that are next to each other on the color wheel.



60.3332, 0.3566, 0.3441



60.3332, 0.3534, 0.3599



60.3332, 0.3391, 0.3681

Triad

The Triadic color harmony groups three colors that are evenly spaced from another and form a triangle on the color wheel.



60.3332, 0.3534, 0.3599



60.3332, 0.2790, 0.3315



60.3332, 0.3062, 0.2958

Complementary

The Complementary color scheme is a pair of colors which are on the opposite of each other on the color wheel.



60.3332, 0.3534, 0.3599



54.6961, 0.2760, 0.2960

Split Complementary

Split-complementary colors differ from the complementary color scheme. The scheme consists of three colors, the original color and two neighbors of the complement color.



60.3332, 0.2861, 0.2918



60.3332, 0.3534, 0.3599



60.3332, 0.2708, 0.3114

Square

The Square scheme is like the rectangle color scheme, but the four colors are evenly spaced on the color wheel.



60.3332, 0.3534, 0.3599



60.3332, 0.2961, 0.3516



60.3332, 0.2733, 0.2972



60.3332, 0.3287, 0.3079

Rectangle

The Rectangle color scheme consists of four colors that form a rectangle on the color wheel.



60.3332, 0.3534, 0.3599



60.3332, 0.3255, 0.3675



60.3332, 0.2733, 0.2972



60.3332, 0.2989, 0.2935

Sweetspot

The Sweet Spot groups the original color and five complimentary colors.



60.3359, 0.3534, 0.3599



93.5538, 0.3239, 0.3380



49.9776, 0.3378, 0.3004



19.9089, 0.3249, 0.3388



0.0000, 0.0000, 0.0000



21.4041, 0.3127, 0.3290

Same Dimension

The Same Dimension uses a secret algorithm to generate beautiful new colors.



60.3359, 0.3534, 0.3599



76.2593, 0.3640, 0.3671



72.7204, 0.3468, 0.3866



14.8729, 0.3279, 0.3412



16.7799, 0.5345, 0.4138



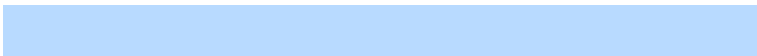
1.3422, 0.5119, 0.4317

Inverse Universe

The Inverse Universe completely reimagines the original color for something new.



54.6961, 0.2760, 0.2960



67.4512, 0.2676, 0.2876



44.3100, 0.2742, 0.2644



14.3243, 0.2981, 0.3165



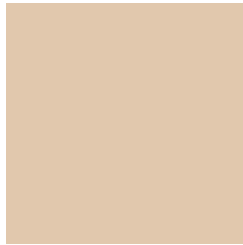
9.5545, 0.1755, 0.1519



0.8409, 0.1835, 0.1805

Previews

White Background



This preview shows how the Yxy color 60.3332, 0.3534, 0.3599 looks on a white background.

Color Contrast Check

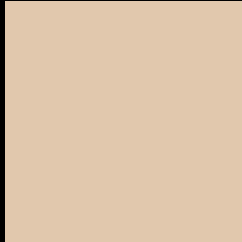
Large Text (above 18pt) WCAG AA × Fail

Any Text WCAG AA × Fail

Large Text (above 18pt) WCAG AAA × Fail

Any Text WCAG AAA × Fail

Black Background



This preview shows how the Yxy color 60.3332, 0.3534, 0.3599 looks on a black background.

Color Contrast Check

Large Text (above 18pt) WCAG AA ✓ Pass

Any Text WCAG AA ✓ Pass

Large Text (above 18pt) WCAG AAA ✓ Pass

Any Text WCAG AAA ✓ Pass

If you want to check with other color combinations, try the [Color Contrast Checker](#).

Yxy 60.3332, 0.3534, 0.3599

Background



This preview shows how black text looks on a background with the Yxy color 60.3332, 0.3534, 0.3599.



This preview shows how white text looks on a background with the Yxy color 60.3332, 0.3534, 0.3599.

Color Blindness Simulation

Color vision deficiency is a very complex topic, and I could not describe the different causes any better than Wikipedia does, so if you want to learn more, you should check out their [article about color blindness](#).

Dichromacy



Original Color

60.3332, 0.3534, 0.3599

Protanopia

60.5770, 0.3419, 0.3630

Deuteranopia

60.1980, 0.3621, 0.3536



Tritanopia

60.3414, 0.3287, 0.3125

Trichromacy



Original Color

60.3332, 0.3534, 0.3599

Protanomaly

60.6733, 0.3462, 0.3627

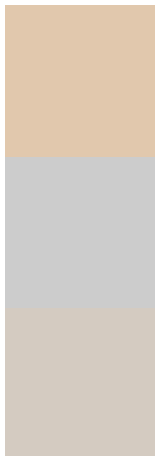
Deuteranomaly

59.9774, 0.3584, 0.3550

Tritanomaly

60.4577, 0.3377, 0.3291

Monochromacy



Original Color

60.3332, 0.3534, 0.3599

Achromatopsia

60.3827, 0.3127, 0.3290

Achromatomaly

60.5592, 0.3270, 0.3407

CSS Examples

Text

The CSS property to change the color of the text to Yxy 60.3332, 0.3534, 0.3599 is called "color". The color property can be set on classes, ids or directly on the HTML element.

This example shows how text in the color `rgb(225, 200, 173)` looks like.

```
.text, #text, p{  
    color:rgb(225, 200, 173)  
}
```

If you want to add a text shadow in that color use the text-shadow property, you can generate a text shadow directly with our [CSS Text Shadow Generator](#).

Here you see how black text with a 4 pixel rgb(225, 200, 173) colored shadow looks like.

```
.shadow{ text-shadow: 4px 4px 2px rgb(225, 200, 173) }
```

Border

The CSS property to change the border of an element to Yxy 60.3332, 0.3534, 0.3599 is called "border". The border property can be set on classes, ids or directly on the HTML element.

This example shows the color as border, it can be applied via the CSS property "border" or "border-color".

```
.border, #border, table{ border:4px solid rgb(225, 200, 173) }
```

If only the border color should be changed use the property `border-color`.

```
.border{ border-color:rgb(225, 200, 173) }
```

If you want to add a box shadow in that color use:

Here you see how a box with a 4 pixel `rgb(225, 200, 173)` colored shadow looks like.

```
.boxshadow{ -moz-box-shadow:4px 4px 4px 4px rgb(225, 200, 173); -webkit-box-shadow:4px 4px 4px 4px rgb(225, 200, 173); box-shadow:4px 4px 4px 4px rgb(225, 200, 173) }
```


Background

The CSS property to change the background color of an element to $\text{Yxy } 60.3332, 0.3534, 0.3599$ is called "background". The background property can be set on classes, ids or directly on the HTML element.

```
.background, #background, body{  
background: rgb(225, 200, 173) }
```

If only the background color should be changed can be used:

```
.background{ background-color: rgb(225,  
200, 173) }
```

This example shows the color as background, it is applied via the CSS property "background".

To optimize and compress your CSS code, you can use our [online CSS compressor and optimizer](#) based on csstidy. If you want to create a linear or radial gradient as background or border, check our [CSS Gradient Generator](#).

Hey! You found this booklet interesting? Support Converting Colors with the new Membership Option!

The pro membership hides all ads, plus gives you double the colors in the color bucket, and more awesome pro features!

[Learn more, Memberships starting at \\$2.50/m!](#)

**Follow me
on Twitter!**

@ConvertingColor