

Converting Colors

$Yxy(60.3836, 0.3544, 0.3481)$

Have a look what the booklet for
Yxy(60.3836, 0.3544, 0.3481)
contains.

Yxy(60.3836, 0.3544, 0.3481)	3
Conversions	4
Details	6
Harmonies	12
Previews	24
Color Blindness Simulation	27
CSS Examples	30

Color

Yxy(60.3836, 0.3544, 0.3481)

Conversions

Conversions Part 1

Format	Color
Hex	E8C5B4
RGB	232, 197, 180
RGB Percent	91%, 77%, 71%
CMY	0.0903, 0.2274, 0.2940
CMYK	0.00, 0.15, 0.22, 0.09
HSL	20°, 53%, 81%
HSV	20°, 22%, 91%
XYZ	61.4764, 60.3836, 51.6062
YIQ	205.5270, 26.3170, 2.1330

Conversions

Conversions Part 2

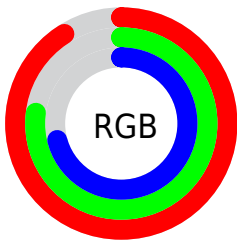
Format	Color
R _Y B	232, 205, 180
Decimal	15254964
CIE Lab	82.05, 9.79, 13.11
CIE LCh	82, 16.365, 53.237
Yxy	60.3836, 0.3544, 0.3481
Android (android.graphics.Color)	4293445044 (0xFFE8C5B4)
YUV	205.5270, -12.5848, 23.2168
Hunter-Lab	77.7069, 5.2301, 15.0195

Details

The Yxy color **60.3836, 0.3544, 0.3481** is a light color, and the websafe version is hex **FFCCCC**. A complement of this color would be **64.1163, 0.2780, 0.3091**, and the grayscale version is **61.4732, 0.3127, 0.3290**.

A 20% lighter version of the original color is **98.1998, 0.3239, 0.3464**, and **30.4073, 0.3659, 0.3526** is the 20% darker color. If you saturate the color by 10%, you get **52.7929, 0.3785, 0.3572**, and if you desaturate by 10%, it is **68.8718, 0.3339, 0.3393**.

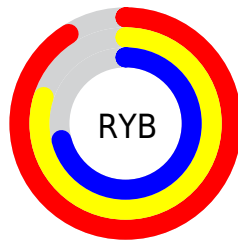
Distribution



Red (91%)

Green (77%)

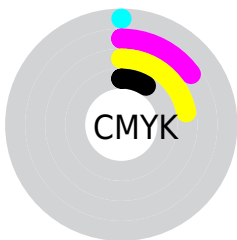
Blue (71%)



Red (91%)

Yellow (80%)

Blue (71%)

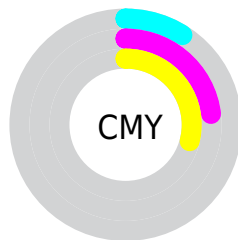


Cyan (0%)

Magenta (15%)

Yellow (22%)

Black (9%)



Cyan (9%)

Magenta (23%)


Yellow (29%)

Brightness & Saturation Gradients


These gradients show how the Yxy color 60.3836, 0.3544, 0.3481 changes by changing the brightness by 10 percent. The first figure shows a shift by +10% for each color and the second figure -10%.

Similar to the brightness gradients but the following saturation gradients show a change of the Yxy color 60.3836, 0.3544, 0.3481 by changing the saturation by 10% instead.


 60.3836, 0.3544,
0.3481

 60.3836, 0.3544,
0.3481


426.0103, 0.3343,
0.3393

 43.7279, 0.3592,
0.3501


 105.3859, 0.3473,
0.3451

 30.4567, 0.3652,
0.3525


134.5013, 0.3445,
0.3439

 20.1855, 0.3730,
0.3556


168.5388, 0.3422,
0.3428

 12.5299, 0.3835,
0.3596

207.8827, 0.3402,
0.3419

 7.1057, 0.3983,
0.3648

252.9174, 0.3385,
0.3412

 3.5283, 0.4207,
0.3719

304.0273, 0.3369,

 1.4134, 0.4655,

0.3405

0.3877

361.5968, 0.3355,
0.3398

0.2265, 0.6673,
0.3327

0.0000, 0.0000,
0.0000

60.3836, 0.3544,
0.3481

60.3836, 0.3544,
0.3481

52.7929, 0.3785,
0.3572

68.8718, 0.3339,
0.3393

46.0615, 0.4065,
0.3661

78.2780, 0.3165,
0.3309

40.1603, 0.4382,
0.3741

88.6321, 0.3018,
0.3232

35.0551, 0.4730,
0.3802

95.8900, 0.2987,
0.3290

■ 30.7097, 0.5090,
0.3832

■ 27.0839, 0.5436,
0.3819

■ 24.1336, 0.5734,
0.3756

■ 22.3042, 0.5918,
0.3683

Harmonies

Analogous

The Analogous color harmony consists of three colors that are next to each other on the color wheel.



60.3836, 0.3490, 0.3306



60.3836, 0.3544, 0.3481



60.3836, 0.3482, 0.3613

Triad

The Triadic color harmony groups three colors that are evenly spaced from another and form a triangle on the color wheel.



60.3836, 0.3544, 0.3481



60.3836, 0.2917, 0.3452



60.3836, 0.2925, 0.2941

Complementary

The Complementary color scheme is a pair of colors which are on the opposite of each other on the color wheel.



60.3836, 0.3544, 0.3481



64.1163, 0.2780, 0.3091

Split Complementary

Split-complementary colors differ from the complementary color scheme. The scheme consists of three colors, the original color and two neighbors of the complement color.



60.3836, 0.2781, 0.2966



60.3836, 0.3544, 0.3481



60.3836, 0.2776, 0.3256

Square

The Square scheme is like the rectangle color scheme, but the four colors are evenly spaced on the color wheel.



60.3836, 0.3544, 0.3481



60.3836, 0.3116, 0.3604



60.3836, 0.2727, 0.3079



60.3836, 0.3127, 0.3002

Rectangle

The Rectangle color scheme consists of four colors that form a rectangle on the color wheel.



60.3836, 0.3544, 0.3481



60.3836, 0.3384, 0.3657



60.3836, 0.2727, 0.3079



60.3836, 0.2868, 0.2939

Sweetspot

The Sweet Spot groups the original color and five complimentary colors.



60.3863, 0.3544, 0.3481



91.4784, 0.3242, 0.3347



54.7345, 0.3283, 0.2902



19.4287, 0.3252, 0.3352



0.0000, 0.0000, 0.0000



21.4041, 0.3127, 0.3290

Same Dimension

The Same Dimension uses a secret algorithm to generate beautiful new colors.



60.3863, 0.3544, 0.3481



70.2536, 0.3654, 0.3524



72.9242, 0.3485, 0.3752



15.1342, 0.3284, 0.3367



12.5909, 0.5889, 0.3706



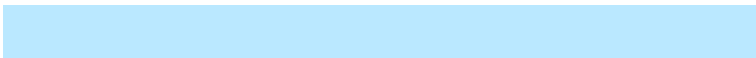
1.0950, 0.5605, 0.3932

Inverse Universe

The Inverse Universe completely reimagines the original color for something new.



64.1163, 0.2780, 0.3091



75.6584, 0.2708, 0.3043



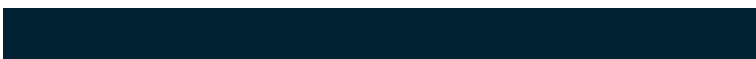
52.1605, 0.2757, 0.2782



15.4998, 0.2981, 0.3211



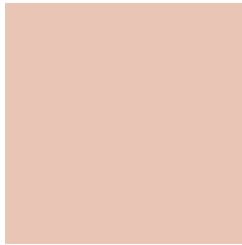
16.6914, 0.1941, 0.2187



1.4011, 0.1991, 0.2367

Previews

White Background



This preview shows how the Yxy color 60.3836, 0.3544, 0.3481 looks on a white background.

Color Contrast Check

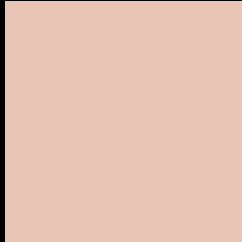
Large Text (above 18pt) WCAG AA × Fail

Any Text WCAG AA × Fail

Large Text (above 18pt) WCAG AAA × Fail

Any Text WCAG AAA × Fail

Black Background



This preview shows how the Yxy color 60.3836, 0.3544, 0.3481 looks on a black background.

Color Contrast Check

Large Text (above 18pt) WCAG AA ✓ Pass

Any Text WCAG AA ✓ Pass

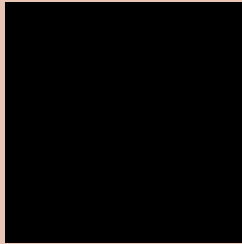
Large Text (above 18pt) WCAG AAA ✓ Pass

Any Text WCAG AAA ✓ Pass

If you want to check with other color combinations, try the [Color Contrast Checker](#).

Yxy 60.3836, 0.3544, 0.3481

Background



This preview shows how black text looks on a background with the Yxy color 60.3836, 0.3544, 0.3481.



This preview shows how white text looks on a background with the Yxy color 60.3836, 0.3544, 0.3481.

Color Blindness Simulation

Color vision deficiency is a very complex topic, and I could not describe the different causes any better than Wikipedia does, so if you want to learn more, you should check out their [article about color blindness](#).

Dichromacy



Original Color

60.3836, 0.3544, 0.3481

Protanopia

60.7508, 0.3351, 0.3536

Deuteranopia

60.5514, 0.3553, 0.3481



Tritanopia

60.3562, 0.3353, 0.3127

Trichromacy



Original Color

60.3836, 0.3544, 0.3481

Protanomaly

60.3663, 0.3421, 0.3509

Deuteranomaly

60.5514, 0.3553, 0.3481

Tritanomaly

60.1532, 0.3423, 0.3247

Monochromacy



Original Color

60.3836, 0.3544, 0.3481

Achromatopsia

61.7207, 0.3127, 0.3290

Achromatomaly

61.1902, 0.3264, 0.3359

CSS Examples

Text

The CSS property to change the color of the text to Yxy 60.3836, 0.3544, 0.3481 is called "color". The color property can be set on classes, ids or directly on the HTML element.

This example shows how text in the color `rgb(232, 197, 180)` looks like.

```
.text, #text, p{  
    color:rgb(232, 197, 180)  
}
```

If you want to add a text shadow in that color use the text-shadow property, you can generate a text shadow directly with our [CSS Text Shadow Generator](#).

Here you see how black text with a 4 pixel rgb(232, 197, 180) colored shadow looks like.

```
.shadow{ text-shadow: 4px 4px 2px rgb(232, 197, 180) }
```

Border

The CSS property to change the border of an element to Yxy 60.3836, 0.3544, 0.3481 is called "border". The border property can be set on classes, ids or directly on the HTML element.

This example shows the color as border, it can be applied via the CSS property "border" or "border-color".

```
.border, #border, table{ border:4px solid rgb(232, 197, 180) }
```

If only the border color should be changed use the property `border-color`.

```
.border{ border-color:rgb(232, 197, 180) }
```

If you want to add a box shadow in that color use:

Here you see how a box with a 4 pixel `rgb(232, 197, 180)` colored shadow looks like.

```
.boxshadow{ -moz-box-shadow:4px 4px 4px  
4px rgb(232, 197, 180); -webkit-box-  
shadow:4px 4px 4px 4px rgb(232, 197, 180);  
box-shadow:4px 4px 4px 4px rgb(232, 197,  
180) }
```


Background

The CSS property to change the background color of an element to Yxy 60.3836, 0.3544, 0.3481 is called "background". The background property can be set on classes, ids or directly on the HTML element.

```
.background, #background, body{  
background: rgb(232, 197, 180) }
```

If only the background color should be changed can be used:

```
.background{ background-color: rgb(232,  
197, 180) }
```

This example shows the color as background, it is applied via the CSS property "background".

To optimize and compress your CSS code, you can use our [online CSS compressor and optimizer](#) based on csstidy. If you want to create a linear or radial gradient as background or border, check our [CSS Gradient Generator](#).

Hey! You found this booklet interesting? Support Converting Colors with the new Membership Option!

The pro membership hides all ads, plus gives you double the colors in the color bucket, and more awesome pro features!

[Learn more, Memberships starting at \\$2.50/m!](#)

**Follow me
on Twitter!**

@ConvertingColor