

Converting Colors

Yxy(60.3929, 0.3392, 0.3443)

Have a look what the booklet for
Yxy(60.3929, 0.3392, 0.3443)
contains.

Yxy(60.2686, 0.3392, 0.3439)	3
Conversions	4
Details	6
Harmonies	12
Previews	24
Color Blindness Simulation	27
CSS Examples	30

Color

Yxy(60.2686, 0.3392, 0.3439)

Conversions

Conversions Part 1

Format	Color
Hex	<code>#DDC8BB</code>
RGB	221, 200, 187
RGB Percent	87%, 78%, 73%
CMY	0.1334, 0.2157, 0.2665
CMYK	0.00, 0.09, 0.15, 0.13
HSL	23°, 33%, 80%
HSV	23°, 15%, 87%
XYZ	59.4449, 60.2686, 55.5368
YIQ	204.7970, 16.6890, 0.4090

Conversions

Conversions Part 2

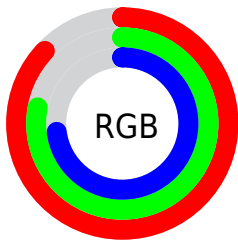
Format	Color
R _Y B	221, 208, 187
Decimal	14534843
CIE Lab	81.98, 5.25, 9.14
CIE LCh	82, 10.539, 60.144
Yxy	60.2686, 0.3392, 0.3439
Android (android.graphics.Color)	4292724923 (0xFFDDC8BB)
YUV	204.7970, -8.7739, 14.2100
Hunter-Lab	77.6329, 0.8233, 11.9282

Details

The Yxy color **60.2686, 0.3392, 0.3439** is a light color, and the websafe version is hex **CCCCCC**. A complement of this color would be **60.9187, 0.2889, 0.3136**, and the grayscale version is **60.9662, 0.3127, 0.3290**.

A 20% lighter version of the original color is **99.2511, 0.3197, 0.3405**, and **30.3860, 0.3463, 0.3472** is the 20% darker color. If you saturate the color by 10%, you get **53.3473, 0.3601, 0.3543**, and if you desaturate by 10%, it is **67.9065, 0.3212, 0.3340**.

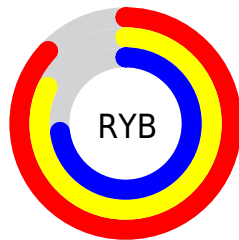
Distribution



Red (87%)

Green (78%)

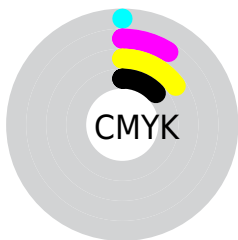
Blue (73%)



Red (87%)

Yellow (82%)

Blue (73%)

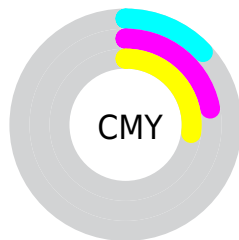


Cyan (0%)

Magenta (9%)

Yellow (15%)

Black (13%)



Cyan (13%)


Magenta (22%)


Yellow (27%)

Brightness & Saturation Gradients


These gradients show how the Yxy color 60.2686, 0.3392, 0.3439 changes by changing the brightness by 10 percent. The first figure shows a shift by +10% for each color and the second figure -10%.


Similar to the brightness gradients but the following saturation gradients show a change of the Yxy color 60.2686, 0.3392, 0.3439 by changing the saturation by 10% instead.


 60.2686, 0.3392,
0.3439

 60.2686, 0.3392,
0.3439


425.5871, 0.3265,
0.3369

 43.6352, 0.3422,
0.3455


 105.2192, 0.3347,
0.3414

 30.3838, 0.3461,
0.3476


134.3052, 0.3330,
0.3405

 20.1301, 0.3510,
0.3502


168.3108, 0.3315,
0.3397

 12.4896, 0.3577,
0.3536

207.6204, 0.3302,
0.3390

 7.0781, 0.3671,
0.3583

252.6185, 0.3291,
0.3384

 3.5110, 0.3815,
0.3652

303.6893, 0.3281,

 1.4040, 0.4070,

0.3378

361.2174, 0.3272,
0.3373

0.3768

0.2196, 0.6053,
0.3947

0.0000, 0.0000,
0.0000

60.2686, 0.3392,
0.3439

60.2686, 0.3392,
0.3439

53.3473, 0.3601,
0.3543

67.9065, 0.3212,
0.3340

47.1133, 0.3844,
0.3648

76.2735, 0.3059,
0.3248

41.5467, 0.4120,
0.3749

85.3916, 0.2928,
0.3163

36.6236, 0.4426,
0.3838

93.8924, 0.2923,
0.3286

■ 32.3187, 0.4754,
0.3905

■ 94.1113, 0.2923,
0.3289

■ 28.6045, 0.5086,
0.3935

■ 25.4510, 0.5397,
0.3917

■ 22.8244, 0.5660,
0.3846

■ 21.7684, 0.5767,
0.3803

Harmonies

Analogous

The Analogous color harmony consists of three colors that are next to each other on the color wheel.



60.2686, 0.3374, 0.3330



60.2686, 0.3392, 0.3439



60.2686, 0.3337, 0.3511

Triad

The Triadic color harmony groups three colors that are evenly spaced from another and form a triangle on the color wheel.



60.2686, 0.3392, 0.3439



60.2686, 0.2966, 0.3367



60.2686, 0.3025, 0.3066

Complementary

The Complementary color scheme is a pair of colors which are on the opposite of each other on the color wheel.



60.2686, 0.3392, 0.3439



60.9187, 0.2889, 0.3136

Split Complementary

Split-complementary colors differ from the complementary color scheme. The scheme consists of three colors, the original color and two neighbors of the complement color.



60.2686, 0.2919, 0.3071



60.2686, 0.3392, 0.3439



60.2686, 0.2886, 0.3242

Square

The Square scheme is like the rectangle color scheme, but the four colors are evenly spaced on the color wheel.



60.2686, 0.3392, 0.3439



60.2686, 0.3090, 0.3472



60.2686, 0.2869, 0.3134



60.2686, 0.3160, 0.3118

Rectangle

The Rectangle color scheme consists of four colors that form a rectangle on the color wheel.



60.2686, 0.3392, 0.3439



60.2686, 0.3267, 0.3528



60.2686, 0.2869, 0.3134



60.2686, 0.2985, 0.3061

Sweetspot

The Sweet Spot groups the original color and five complimentary colors.



60.2713, 0.3392, 0.3439



94.2791, 0.3207, 0.3337



55.5111, 0.3241, 0.3047



20.0119, 0.3219, 0.3344



0.0000, 0.0000, 0.0000



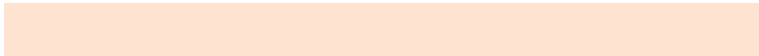
21.4041, 0.3127, 0.3290

Same Dimension

The Same Dimension uses a secret algorithm to generate beautiful new colors.



60.2713, 0.3392, 0.3439



80.6000, 0.3447, 0.3467



68.3128, 0.3364, 0.3621



13.8622, 0.3282, 0.3380



12.8490, 0.5740, 0.3825



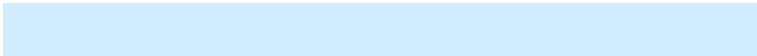
0.9958, 0.5435, 0.4067

Inverse Universe

The Inverse Universe completely reimagines the original color for something new.



60.9187, 0.2889, 0.3136



81.6355, 0.2846, 0.3106



53.3010, 0.2881, 0.2936



13.9511, 0.2982, 0.3199



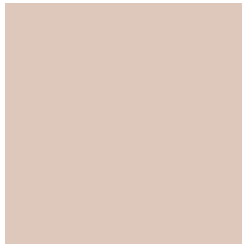
13.5911, 0.1888, 0.1995



1.0450, 0.1953, 0.2229

Previews

White Background



This preview shows how the Yxy color 60.2686, 0.3392, 0.3439 looks on a white background.

Color Contrast Check

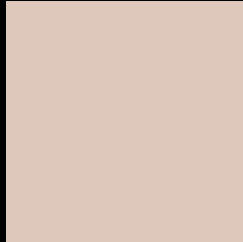
Large Text (above 18pt) WCAG AA × Fail

Any Text WCAG AA × Fail

Large Text (above 18pt) WCAG AAA × Fail

Any Text WCAG AAA × Fail

Black Background



This preview shows how the Yxy color 60.2686, 0.3392, 0.3439 looks on a black background.

Color Contrast Check

Large Text (above 18pt) WCAG AA ✓ Pass

Any Text WCAG AA ✓ Pass

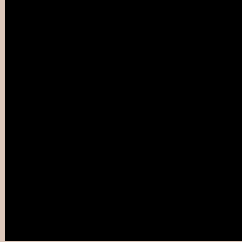
Large Text (above 18pt) WCAG AAA ✓ Pass

Any Text WCAG AAA ✓ Pass

If you want to check with other color combinations, try the [Color Contrast Checker](#).

Yxy 60.2686, 0.3392, 0.3439

Background



This preview shows how black text looks on a background with the Yxy color 60.2686, 0.3392, 0.3439.



This preview shows how white text looks on a background with the Yxy color 60.2686, 0.3392, 0.3439.

Color Blindness Simulation

Color vision deficiency is a very complex topic, and I could not describe the different causes any better than Wikipedia does, so if you want to learn more, you should check out their [article about color blindness](#).

Dichromacy



Original Color

60.2686, 0.3392, 0.3439

Protanopia

60.2349, 0.3292, 0.3454

Deuteranopia

60.3863, 0.3464, 0.3392



Tritanopia

60.0806, 0.3231, 0.3112

Trichromacy



Original Color

60.2686, 0.3392, 0.3439

Protanomaly

60.3190, 0.3333, 0.3453

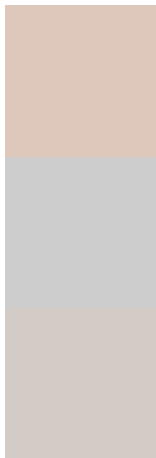
Deuteranomaly

60.3499, 0.3437, 0.3404

Tritanomaly

59.9323, 0.3290, 0.3223

Monochromacy



Original Color

60.2686, 0.3392, 0.3439

Achromatopsia

61.0496, 0.3127, 0.3290

Achromatomaly

60.6380, 0.3225, 0.3348

CSS Examples

Text

The CSS property to change the color of the text to Yxy 60.2686, 0.3392, 0.3439 is called "color". The color property can be set on classes, ids or directly on the HTML element.

This example shows how text in the color `rgb(221, 200, 187)` looks like.

```
.text, #text, p{  
    color:rgb(221, 200, 187)  
}
```

If you want to add a text shadow in that color use the text-shadow property, you can generate a text shadow directly with our [CSS Text Shadow Generator](#).

Here you see how black text with a 4 pixel rgb(221, 200, 187) colored shadow looks like.

```
.shadow{ text-shadow: 4px 4px 2px rgb(221, 200, 187) }
```

Border

The CSS property to change the border of an element to Yxy 60.2686, 0.3392, 0.3439 is called "border". The border property can be set on classes, ids or directly on the HTML element.

This example shows the color as border, it can be applied via the CSS property "border" or "border-color".

```
.border, #border, table{ border:4px solid rgb(221, 200, 187) }
```

If only the border color should be changed use the property `border-color`.

```
.border{ border-color:rgb(221, 200, 187) }
```

If you want to add a box shadow in that color use:

Here you see how a box with a 4 pixel `rgb(221, 200, 187)` colored shadow looks like.

```
.boxshadow{ -moz-box-shadow:4px 4px 4px  
4px rgb(221, 200, 187); -webkit-box-  
shadow:4px 4px 4px 4px rgb(221, 200, 187);  
box-shadow:4px 4px 4px 4px rgb(221, 200,  
187) }
```


Background

The CSS property to change the background color of an element to Yxy 60.2686, 0.3392, 0.3439 is called "background". The background property can be set on classes, ids or directly on the HTML element.

```
.background, #background, body{  
background: rgb(221, 200, 187) }
```

If only the background color should be changed can be used:

```
.background{ background-color: rgb(221,  
200, 187) }
```

This example shows the color as background, it is applied via the CSS property "background".

To optimize and compress your CSS code, you can use our [online CSS compressor and optimizer](#) based on csstidy. If you want to create a linear or radial gradient as background or border, check our [CSS Gradient Generator](#).

Hey! You found this booklet interesting? Support Converting Colors with the new Membership Option!

The pro membership hides all ads, plus gives you double the colors in the color bucket, and more awesome pro features!

[Learn more, Memberships starting at \\$2.50/m!](#)

**Follow me
on Twitter!**

@ConvertingColor