

# Converting Colors

$Yxy(60.4201, 0.3465, 0.3380)$

Have a look what the booklet for  
Yxy(60.4201, 0.3465, 0.3380)  
contains.

<b>Yxy(60.5956, 0.3464, 0.3380)</b> .....	3
<b>Conversions</b> .....	4
<b>Details</b> .....	6
<b>Harmonies</b> .....	12
<b>Previews</b> .....	24
<b>Color Blindness Simulation</b> .....	27
<b>CSS Examples</b> .....	30

# Color

**Yxy(60.5956, 0.3464, 0.3380)**

# Conversions

## Conversions Part 1

Format	Color
Hex	E7C5BD
RGB	231, 197, 189
RGB Percent	91%, 77%, 74%
CMY	0.0942, 0.2274, 0.2587
CMYK	0.00, 0.15, 0.18, 0.09
HSL	11°, 47%, 82%
HSV	11°, 18%, 91%
XYZ	62.1015, 60.5956, 56.5798
YIQ	206.2540, 22.8320, 4.7200

# Conversions

## Conversions Part 2

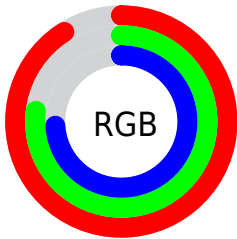
Format	Color
R <sub>Y</sub> B	231, 199, 189
Decimal	15189437
CIE Lab	82.16, 10.76, 8.45
CIE LCh	82, 13.683, 38.144
Yxy	60.5956, 0.3464, 0.3380
Android (android.graphics.Color)	4293379517 (0xFFE7C5BD)
YUV	206.2540, -8.5062, 21.7022
Hunter-Lab	77.8432, 6.1777, 11.3957

# Details

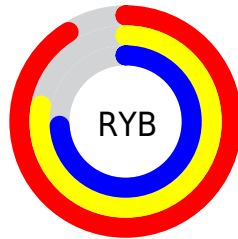
The Yxy color  $60.5956, 0.3464, 0.3380$  is a light color, and the websafe version is hex `FFCCCC`. A complement of this color would be  $69.3549, 0.2850, 0.3198$ , and the grayscale version is  $61.9380, 0.3127, 0.3290$ .

A 20% lighter version of the original color is  $98.7362, 0.3186, 0.3376$ , and  $30.5365, 0.3550, 0.3394$  is the 20% darker color. If you saturate the color by 10%, you get  $51.7017, 0.3706, 0.3433$ , and if you desaturate by 10%, it is  $70.7079, 0.3264, 0.3329$ .

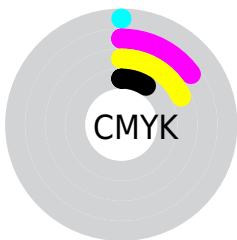
# Distribution



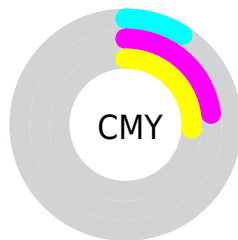
- Red (91%)
- Green (77%)
- Blue (74%)



- Red (91%)
- Yellow (78%)
- Blue (74%)



- Cyan (0%)
- Magenta (15%)
- Yellow (18%)
- Black (9%)




- Cyan (9%)
- Magenta (23%)
- Yellow (26%)


# Brightness & Saturation Gradients

These gradients show how the Yxy color 60.5956, 0.3464, 0.3380 changes by changing the brightness by 10 percent. The first figure shows a shift by +10% for each color and the second figure -10%.


Similar to the brightness gradients but the following saturation gradients show a change of the Yxy color 60.5956, 0.3464, 0.3380 by changing the saturation by 10% instead.




 60.5956, 0.3464,  
0.3380

 60.5956, 0.3464,  
0.3380


426.7897, 0.3302,  
0.3339

 43.8989, 0.3503,  
0.3389

 105.6932, 0.3406,  
0.3366

 30.5910, 0.3551,  
0.3400


134.8628, 0.3384,  
0.3361

 20.2876, 0.3615,  
0.3414


168.9589, 0.3366,  
0.3356

 12.6043, 0.3700,  
0.3431


208.3658, 0.3349,  
0.3352

 7.1566, 0.3820,  
0.3454

253.4680, 0.3335,  
0.3348

 3.5602, 0.4005,  
0.3484

304.6497, 0.3323,

 1.4307, 0.4321,

0.3345

362.2955, 0.3312,  
0.3342

0.3524

0.2392, 0.6720,  
0.3280

0.0000, 0.0000,  
0.0000

60.5956, 0.3464,  
0.3380

60.5956, 0.3464,  
0.3380

51.7017, 0.3706,  
0.3433

70.7079, 0.3264,  
0.3329

43.9721, 0.3996,  
0.3487

82.0738, 0.3099,  
0.3282

37.3605, 0.4337,  
0.3535

94.5220, 0.2981,  
0.3271

31.8148, 0.4726,  
0.3573

95.7242, 0.2981,  
0.3290

■ 27.2781, 0.5144,  
0.3592

■ 23.6885, 0.5557,  
0.3581

■ 20.9768, 0.5916,  
0.3535

■ 19.0615, 0.6174,  
0.3461

■ 18.7854, 0.6213,  
0.3449

# Harmonies

## Analogous

The Analogous color harmony consists of three colors that are next to each other on the color wheel.



60.5956, 0.3374, 0.3229



60.5956, 0.3464, 0.3380



60.5956, 0.3461, 0.3513

# Triad

The Triadic color harmony groups three colors that are evenly spaced from another and form a triangle on the color wheel.



60.5956, 0.3464, 0.3380



60.5956, 0.3032, 0.3495



60.5956, 0.2889, 0.2998

# Complementary

The Complementary color scheme is a pair of colors which are on the opposite of each other on the color wheel.



60.5956, 0.3464, 0.3380



69.3549, 0.2850, 0.3198

# Split Complementary

Split-complementary colors differ from the complementary color scheme. The scheme consists of three colors, the original color and two neighbors of the complement color.



60.5956, 0.2803, 0.3059



60.5956, 0.3464, 0.3380



60.5956, 0.2884, 0.3346

# Square

The Square scheme is like the rectangle color scheme, but the four colors are evenly spaced on the color wheel.



60.5956, 0.3464, 0.3380



60.5956, 0.3208, 0.3586



60.5956, 0.2802, 0.3185



60.5956, 0.3039, 0.3013



# Rectangle

The Rectangle color scheme consists of four colors that form a rectangle on the color wheel.



60.5956, 0.3464, 0.3380



60.5956, 0.3406, 0.3573



60.5956, 0.2802, 0.3185



60.5956, 0.2852, 0.3010

# Sweetspot

The Sweet Spot groups the original color and five complimentary colors.



60.5983, 0.3464, 0.3380



92.7964, 0.3209, 0.3314



58.7325, 0.3206, 0.2919



19.6525, 0.3221, 0.3317



0.0000, 0.0000, 0.0000



21.4041, 0.3127, 0.3290

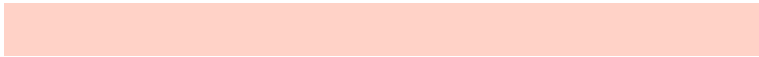


# Same Dimension

The Same Dimension uses a secret algorithm to generate beautiful new colors.



60.5983, 0.3464, 0.3380



71.2681, 0.3554, 0.3401



70.6405, 0.3424, 0.3604



14.8100, 0.3288, 0.3335



10.6684, 0.6190, 0.3467



0.9147, 0.5920, 0.3682

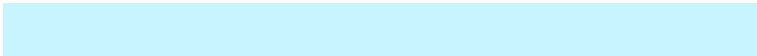


# Inverse Universe

The Inverse Universe completely reimagines the original color for something new.



69.3549, 0.2850, 0.3198



84.2387, 0.2791, 0.3176



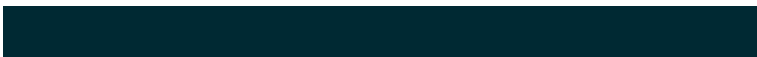
58.9751, 0.2836, 0.2955



15.8451, 0.2981, 0.3244



23.3321, 0.2075, 0.2670

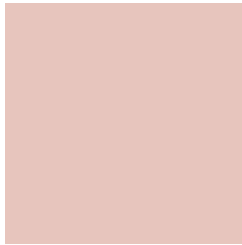


1.8447, 0.2103, 0.2770



# Previews

## White Background



This preview shows how the Yxy color 60.5956, 0.3464, 0.3380 looks on a white background.

## Color Contrast Check

Large Text (above 18pt) WCAG AA × Fail

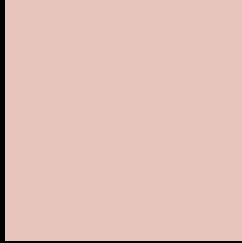
Any Text WCAG AA × Fail

Large Text (above 18pt) WCAG AAA × Fail

Any Text WCAG AAA × Fail



# Black Background



This preview shows how the Yxy color 60.5956, 0.3464, 0.3380 looks on a black background.

## Color Contrast Check

Large Text (above 18pt) WCAG AA ✓ Pass

Any Text WCAG AA ✓ Pass

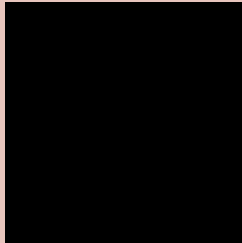
Large Text (above 18pt) WCAG AAA ✓ Pass

Any Text WCAG AAA ✓ Pass

If you want to check with other color combinations, try the [Color Contrast Checker](#).

**Yxy 60.5956, 0.3464, 0.3380**

## Background



This preview shows how black text looks on a background with the Yxy color 60.5956, 0.3464, 0.3380.

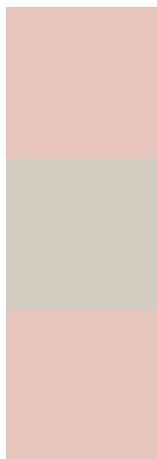


This preview shows how white text looks on a background with the Yxy color 60.5956, 0.3464, 0.3380.

# Color Blindness Simulation

Color vision deficiency is a very complex topic, and I could not describe the different causes any better than Wikipedia does, so if you want to learn more, you should check out their [article about color blindness](#).

## Dichromacy



### Original Color

60.5956, 0.3464, 0.3380

### Protanopia

60.8849, 0.3261, 0.3418

### Deuteranopia

60.4296, 0.3456, 0.3380



## Tritanopia

60.5107, 0.3328, 0.3127

# Trichromacy



## Original Color

60.5956, 0.3464, 0.3380

## Protanomaly

60.4845, 0.3328, 0.3394

## Deuteranomaly

60.4296, 0.3456, 0.3380

## Tritanomaly

60.4503, 0.3373, 0.3214

# Monochromacy



## Original Color

60.5956, 0.3464, 0.3380

## Achromatopsia

61.7207, 0.3127, 0.3290

## Achromatomaly

61.3291, 0.3242, 0.3325

# CSS Examples

## Text

The CSS property to change the color of the text to Yxy 60.5956, 0.3464, 0.3380 is called "color". The color property can be set on classes, ids or directly on the HTML element.

This example shows how text in the color `rgb(231, 197, 189)` looks like.

```
.text, #text, p{  
    color:rgb(231, 197, 189)  
}
```

If you want to add a text shadow in that color use the text-shadow property, you can generate a text shadow directly with our [CSS Text Shadow Generator](#).

Here you see how black text with a 4 pixel rgb(231, 197, 189) colored shadow looks like.

```
.shadow{ text-shadow: 4px 4px 2px rgb(231, 197, 189) }
```

## Border

The CSS property to change the border of an element to Yxy 60.5956, 0.3464, 0.3380 is called "border". The border property can be set on classes, ids or directly on the HTML element.

This example shows the color as border, it can be applied via the CSS property "border" or "border-color".

```
.border, #border, table{ border:4px solid rgb(231, 197, 189) }
```

If only the border color should be changed use the property `border-color`.

```
.border{ border-color:rgb(231, 197, 189) }
```

If you want to add a box shadow in that color use:

Here you see how a box with a 4 pixel `rgb(231, 197, 189)` colored shadow looks like.

```
.boxshadow{ -moz-box-shadow:4px 4px 4px  
4px rgb(231, 197, 189); -webkit-box-  
shadow:4px 4px 4px 4px rgb(231, 197, 189);  
box-shadow:4px 4px 4px 4px rgb(231, 197,  
189) }
```



# Background

The CSS property to change the background color of an element to Yxy 60.5956, 0.3464, 0.3380 is called "background". The background property can be set on classes, ids or directly on the HTML element.

```
.background, #background, body{  
background: rgb(231, 197, 189) }
```

If only the background color should be changed can be used:

```
.background{ background-color: rgb(231,  
197, 189) }
```

This example shows the color as background, it is applied via the CSS property "background".

To optimize and compress your CSS code, you can use our [online CSS compressor and optimizer](#) based on csstidy. If you want to create a linear or radial gradient as background or border, check our [CSS Gradient Generator](#).

Hey! You found this booklet interesting? Support Converting Colors with the new Membership Option!

The pro membership hides all ads, plus gives you double the colors in the color bucket, and more awesome pro features!

**[Learn more, Memberships starting at \\$2.50/m!](#)**

**Follow me  
on Twitter!**

@ConvertingColor