

Converting Colors

$Yxy(60.5449, 0.3335, 0.3377)$

Have a look what the booklet for
Yxy(60.5449, 0.3335, 0.3377)
contains.

Yxy(60.8392, 0.3337, 0.3382)	3
Conversions	4
Details	6
Harmonies	12
Previews	24
Color Blindness Simulation	27
CSS Examples	30

Color

Yxy(60.8392, 0.3337, 0.3382)

Conversions

Conversions Part 1

Format	Color
Hex	DCC9C1
RGB	220, 201, 193
RGB Percent	86%, 79%, 76%
CMY	0.1372, 0.2118, 0.2432
CMYK	0.00, 0.09, 0.12, 0.14
HSL	18°, 28%, 81%
HSV	18°, 12%, 86%
XYZ	60.0297, 60.8392, 59.0223
YIQ	205.7690, 13.8920, 1.5400

Conversions

Conversions Part 2

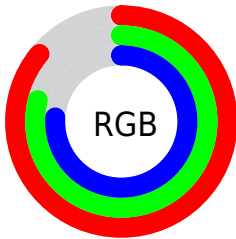
Format	Color
R _Y B	220, 204, 193
Decimal	14469569
CIE Lab	82.29, 5.32, 6.40
CIE LCh	82, 8.317, 50.273
Yxy	60.8392, 0.3337, 0.3382
Android (android.graphics.Color)	4292659649 (0xFFDCC9C1)
YUV	205.7690, -6.2951, 12.4806
Hunter-Lab	77.9995, 0.8774, 9.7348

Details

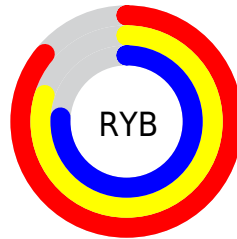
The Yxy color **60.8392, 0.3337, 0.3382** is a light color, and the websafe version is hex **CCCCCC**. A complement of this color would be **63.5915, 0.2938, 0.3196**, and the grayscale version is **61.6025, 0.3127, 0.3290**.

A 20% lighter version of the original color is **99.6196, 0.3162, 0.3347**, and **30.7602, 0.3388, 0.3396** is the 20% darker color. If you saturate the color by 10%, you get **53.0755, 0.3544, 0.3462**, and if you desaturate by 10%, it is **69.4815, 0.3163, 0.3307**.

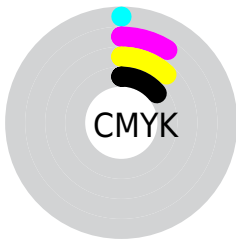
Distribution



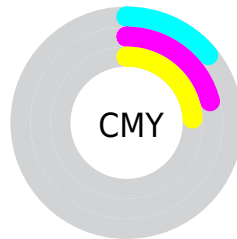
- Red (86%)
- Green (79%)
- Blue (76%)



- Red (86%)
- Yellow (80%)
- Blue (76%)



- Cyan (0%)
- Magenta (9%)
- Yellow (12%)
- Black (14%)





- Cyan (14%)
- Magenta (21%)
- Yellow (24%)

Brightness & Saturation Gradients


These gradients show how the Yxy color 60.8392, 0.3337, 0.3382 changes by changing the brightness by 10 percent. The first figure shows a shift by +10% for each color and the second figure -10%.

Similar to the brightness gradients but the following saturation gradients show a change of the Yxy color 60.8392, 0.3337, 0.3382 by changing the saturation by 10% instead.

 60.8392, 0.3337,
0.3382

 60.8392, 0.3337,
0.3382

427.6842, 0.3236,
0.3339

 44.0954, 0.3361,
0.3392


 106.0461, 0.3301,
0.3367

 30.7455, 0.3391,
0.3404


135.2780, 0.3288,
0.3361

 20.4051, 0.3430,
0.3420


169.4413, 0.3276,
0.3356

 12.6899, 0.3483,
0.3441

208.9205, 0.3266,
0.3352

 7.2154, 0.3557,
0.3470

254.1001, 0.3257,
0.3348

 3.5971, 0.3671,
0.3512

305.3642, 0.3249,

 1.4509, 0.3866,

0.3345

0.3579

363.0975, 0.3242,
0.3342

0.2538, 0.5938,
0.4062

0.0000, 0.0000,
0.0000

60.8392, 0.3337,
0.3382

60.8392, 0.3337,
0.3382

53.0755, 0.3544,
0.3462

69.4815, 0.3163,
0.3307

46.1545, 0.3788,
0.3544

79.0208, 0.3017,
0.3237

40.0496, 0.4073,
0.3625

89.2256, 0.2915,
0.3212

34.7295, 0.4399,
0.3697

93.9583, 0.2917,
0.3289

■ 30.1612, 0.4757,
0.3752

■ 26.3089, 0.5131,
0.3777

■ 23.1336, 0.5491,
0.3761

■ 20.5918, 0.5799,
0.3698

■ 19.0267, 0.5989,
0.3626

Harmonies

Analogous

The Analogous color harmony consists of three colors that are next to each other on the color wheel.



60.8392, 0.3304, 0.3291



60.8392, 0.3337, 0.3382



60.8392, 0.3312, 0.3450

Triad

The Triadic color harmony groups three colors that are evenly spaced from another and form a triangle on the color wheel.



60.8392, 0.3337, 0.3382



60.8392, 0.3030, 0.3380



60.8392, 0.3016, 0.3109

Complementary

The Complementary color scheme is a pair of colors which are on the opposite of each other on the color wheel.



60.8392, 0.3337, 0.3382



63.5915, 0.2938, 0.3196

Split Complementary

Split-complementary colors differ from the complementary color scheme. The scheme consists of three colors, the original color and two neighbors of the complement color.



60.8392, 0.2945, 0.3129



60.8392, 0.3337, 0.3382



60.8392, 0.2953, 0.3285

Square

The Square scheme is like the rectangle color scheme, but the four colors are evenly spaced on the color wheel.



60.8392, 0.3337, 0.3382



60.8392, 0.3134, 0.3451



60.8392, 0.2922, 0.3193



60.8392, 0.3118, 0.3136

Rectangle

The Rectangle color scheme consists of four colors that form a rectangle on the color wheel.



60.8392, 0.3337, 0.3382



60.8392, 0.3267, 0.3473



60.8392, 0.2922, 0.3193



60.8392, 0.2988, 0.3111

Sweetspot

The Sweet Spot groups the original color and five complimentary colors.



60.8419, 0.3337, 0.3382



94.8674, 0.3191, 0.3319



58.1236, 0.3199, 0.3072



20.1038, 0.3204, 0.3325



0.0000, 0.0000, 0.0000



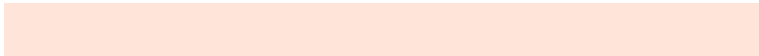
21.4041, 0.3127, 0.3290

Same Dimension

The Same Dimension uses a secret algorithm to generate beautiful new colors.



60.8419, 0.3337, 0.3382



81.7944, 0.3392, 0.3404



67.2421, 0.3318, 0.3529



13.6777, 0.3284, 0.3360



11.3343, 0.5962, 0.3648



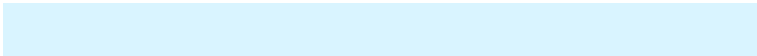
0.8822, 0.5639, 0.3905

Inverse Universe

The Inverse Universe completely reimagines the original color for something new.



63.5915, 0.2938, 0.3196



86.4290, 0.2894, 0.3173



57.2783, 0.2934, 0.3040



14.1435, 0.2982, 0.3219



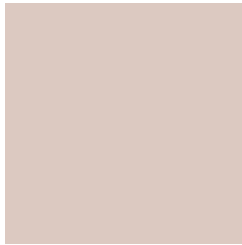
16.9472, 0.1972, 0.2299



1.2451, 0.2022, 0.2479

Previews

White Background



This preview shows how the Yxy color 60.8392, 0.3337, 0.3382 looks on a white background.

Color Contrast Check

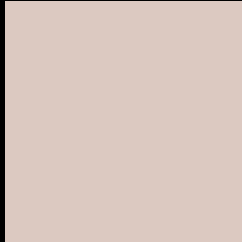
Large Text (above 18pt) WCAG AA × Fail

Any Text WCAG AA × Fail

Large Text (above 18pt) WCAG AAA × Fail

Any Text WCAG AAA × Fail

Black Background



This preview shows how the Yxy color 60.8392, 0.3337, 0.3382 looks on a black background.

Color Contrast Check

Large Text (above 18pt) WCAG AA ✓ Pass

Any Text WCAG AA ✓ Pass

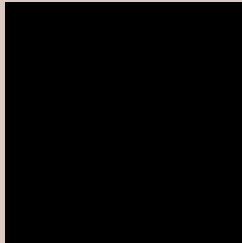
Large Text (above 18pt) WCAG AAA ✓ Pass

Any Text WCAG AAA ✓ Pass

If you want to check with other color combinations, try the [Color Contrast Checker](#).

Yxy 60.8392, 0.3337, 0.3382

Background



This preview shows how black text looks on a background with the Yxy color 60.8392, 0.3337, 0.3382.

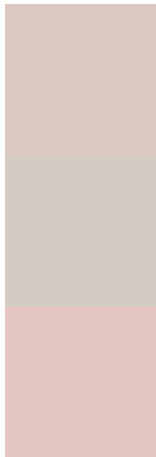


This preview shows how white text looks on a background with the Yxy color 60.8392, 0.3337, 0.3382.

Color Blindness Simulation

Color vision deficiency is a very complex topic, and I could not describe the different causes any better than Wikipedia does, so if you want to learn more, you should check out their [article about color blindness](#).

Dichromacy



Original Color

60.8392, 0.3337, 0.3382

Protanopia

60.9747, 0.3246, 0.3395

Deuteranopia

60.9412, 0.3407, 0.3335



Tritanopia

60.8802, 0.3213, 0.3123

Trichromacy



Original Color

60.8392, 0.3337, 0.3382

Protanomaly

60.9031, 0.3279, 0.3394

Deuteranomaly

60.9106, 0.3381, 0.3347

Tritanomaly

60.8327, 0.3257, 0.3212

Monochromacy



Original Color

60.8392, 0.3337, 0.3382

Achromatopsia

61.7207, 0.3127, 0.3290

Achromatomaly

61.2517, 0.3203, 0.3325

CSS Examples

Text

The CSS property to change the color of the text to Yxy 60.8392, 0.3337, 0.3382 is called "color". The color property can be set on classes, ids or directly on the HTML element.

This example shows how text in the color `rgb(220, 201, 193)` looks like.

```
.text, #text, p{  
    color:rgb(220, 201, 193)  
}
```

If you want to add a text shadow in that color use the text-shadow property, you can generate a text shadow directly with our [CSS Text Shadow Generator](#).

Here you see how black text with a 4 pixel rgb(220, 201, 193) colored shadow looks like.

```
.shadow{ text-shadow: 4px 4px 2px rgb(220, 201, 193) }
```

Border

The CSS property to change the border of an element to Yxy 60.8392, 0.3337, 0.3382 is called "border". The border property can be set on classes, ids or directly on the HTML element.

This example shows the color as border, it can be applied via the CSS property "border" or "border-color".

```
.border, #border, table{ border:4px solid rgb(220, 201, 193) }
```

If only the border color should be changed use the property `border-color`.

```
.border{ border-color:rgb(220, 201, 193) }
```

If you want to add a box shadow in that color use:

Here you see how a box with a 4 pixel `rgb(220, 201, 193)` colored shadow looks like.

```
.boxshadow{ -moz-box-shadow:4px 4px 4px  
4px rgb(220, 201, 193); -webkit-box-  
shadow:4px 4px 4px 4px rgb(220, 201, 193);  
box-shadow:4px 4px 4px 4px rgb(220, 201,  
193) }
```


Background

The CSS property to change the background color of an element to Yxy 60.8392, 0.3337, 0.3382 is called "background". The background property can be set on classes, ids or directly on the HTML element.

```
.background, #background, body{  
background: rgb(220, 201, 193) }
```

If only the background color should be changed can be used:

```
.background{ background-color: rgb(220,  
201, 193) }
```

This example shows the color as background, it is applied via the CSS property "background".

To optimize and compress your CSS code, you can use our [online CSS compressor and optimizer](#) based on csstidy. If you want to create a linear or radial gradient as background or border, check our [CSS Gradient Generator](#).

Hey! You found this booklet interesting? Support Converting Colors with the new Membership Option!

The pro membership hides all ads, plus gives you double the colors in the color bucket, and more awesome pro features!

[Learn more, Memberships starting at \\$2.50/m!](#)

**Follow me
on Twitter!**

@ConvertingColor