

Converting Colors

$Yxy(60.6703, 0.3343, 0.3452)$

Have a look what the booklet for
Yxy(60.6703, 0.3343, 0.3452)
contains.

Yxy(60.6236, 0.3349, 0.3452)	3
Conversions	4
Details	6
Harmonies	12
Previews	24
Color Blindness Simulation	27
CSS Examples	30

Color

Yxy(60.6236, 0.3349, 0.3452)

Conversions

Conversions Part 1

Format	Color
Hex	D9CABC
RGB	217, 202, 188
RGB Percent	85%, 79%, 74%
CMY	0.1490, 0.2078, 0.2627
CMYK	0.00, 0.07, 0.13, 0.15
HSL	29°, 28%, 79%
HSV	29°, 13%, 85%
XYZ	58.8147, 60.6236, 56.1804
YIQ	204.8890, 13.4340, -1.1740

Conversions

Conversions Part 2

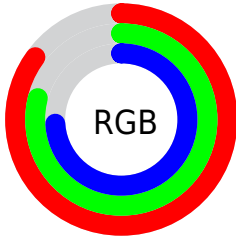
Format	Color
RYB	217, 215, 188
Decimal	14273212
CIELab	82.18, 2.90, 8.86
CIELCh	82, 9.320, 71.854
Yxy	60.6236, 0.3349, 0.3452
Android (android.graphics.Color)	4292463292 (0xFFD9CABC)
YUV	204.8890, -8.3263, 10.6213
Hunter-Lab	77.8612, -1.4218, 11.7223

Details

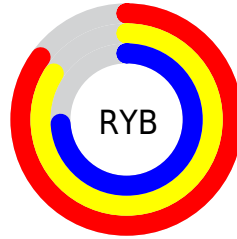
The Yxy color $60.6236, 0.3349, 0.3452$ is a light color, and the websafe version is hex `CCCCCC`. A complement of this color would be $58.4187, 0.2920, 0.3122$, and the grayscale version is $61.0258, 0.3127, 0.3290$.

A 20% lighter version of the original color is $99.3117, 0.3191, 0.3396$, and $30.6105, 0.3404, 0.3489$ is the 20% darker color. If you saturate the color by 10%, you get $54.6810, 0.3543, 0.3581$, and if you desaturate by 10%, it is $67.0956, 0.3179, 0.3330$.

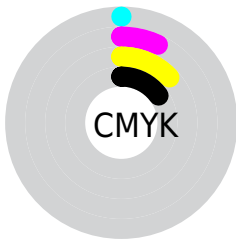
Distribution



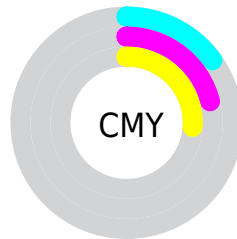
- Red (85%)
- Green (79%)
- Blue (74%)



- Red (85%)
- Yellow (84%)
- Blue (74%)



- Cyan (0%)
- Magenta (7%)
- Yellow (13%)
- Black (15%)



- Cyan (15%)
- Magenta (21%)
- Yellow (26%)

Brightness & Saturation Gradients

These gradients show how the Yxy color 60.6236, 0.3349, 0.3452 changes by changing the brightness by 10 percent. The first figure shows a shift by +10% for each color and the second figure -10%.

Similar to the brightness gradients but the following saturation gradients show a change of the Yxy color 60.6236, 0.3349, 0.3452 by changing the saturation by 10% instead.

60.6236, 0.3349,
0.3452

60.6236, 0.3349,
0.3452

426.8925, 0.3243,
0.3375

43.9215, 0.3374,
0.3470

105.7337, 0.3311,
0.3425

30.6088, 0.3406,
0.3493

134.9106, 0.3297,
0.3415

20.3011, 0.3447,
0.3521

169.0144, 0.3285,
0.3406

12.6141, 0.3503,
0.3560

208.4296, 0.3274,
0.3398

7.1634, 0.3581,
0.3614

253.5407, 0.3265,
0.3391

3.5645, 0.3700,
0.3694

304.7319, 0.3256,

1.4331, 0.3906,

0.3385

362.3877, 0.3249,
0.3380

0.3828

0.2409, 0.5545,
0.4455

0.0000, 0.0000,
0.0000

60.6236, 0.3349,
0.3452

60.6236, 0.3349,
0.3452

54.6810, 0.3543,
0.3581

67.0956, 0.3179,
0.3330

49.2454, 0.3763,
0.3712

74.1028, 0.3032,
0.3215

44.3045, 0.4009,
0.3840

81.6609, 0.2903,
0.3109

39.8422, 0.4276,
0.3957

88.4404, 0.2897,
0.3207

■ 35.8414, 0.4558,
0.4053

■ 93.4929, 0.2900,
0.3289

■ 32.2839, 0.4841,
0.4114

■ 29.1493, 0.5108,
0.4127

■ 26.4149, 0.5340,
0.4087

■ 24.8023, 0.5474,
0.4036

Harmonies

Analogous

The Analogous color harmony consists of three colors that are next to each other on the color wheel.



60.6236, 0.3359, 0.3366



60.6236, 0.3349, 0.3452



60.6236, 0.3279, 0.3497

Triad

The Triadic color harmony groups three colors that are evenly spaced from another and form a triangle on the color wheel.



60.6236, 0.3349, 0.3452



60.6236, 0.2951, 0.3315



60.6236, 0.3083, 0.3104

Complementary

The Complementary color scheme is a pair of colors which are on the opposite of each other on the color wheel.



60.6236, 0.3349, 0.3452



58.4187, 0.2920, 0.3122

Split Complementary

Split-complementary colors differ from the complementary color scheme. The scheme consists of three colors, the original color and two neighbors of the complement color.



60.6236, 0.2975, 0.3088



60.6236, 0.3349, 0.3452



60.6236, 0.2901, 0.3207

Square

The Square scheme is like the rectangle color scheme, but the four colors are evenly spaced on the color wheel.



60.6236, 0.3349, 0.3452



60.6236, 0.3049, 0.3418



60.6236, 0.2910, 0.3125



60.6236, 0.3203, 0.3167

Rectangle

The Rectangle color scheme consists of four colors that form a rectangle on the color wheel.



60.6236, 0.3349, 0.3452



60.6236, 0.3208, 0.3496



60.6236, 0.2910, 0.3125



60.6236, 0.3044, 0.3093

Sweetspot

The Sweet Spot groups the original color and five complimentary colors.



60.6263, 0.3349, 0.3452



96.0395, 0.3190, 0.3338



55.0558, 0.3247, 0.3112



20.4000, 0.3202, 0.3347



0.0000, 0.0000, 0.0000



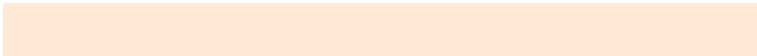
21.4041, 0.3127, 0.3290

Same Dimension

The Same Dimension uses a secret algorithm to generate beautiful new colors.



60.6263, 0.3349, 0.3452



84.9092, 0.3400, 0.3487



67.5167, 0.3328, 0.3608



14.0834, 0.3280, 0.3403



15.2224, 0.5451, 0.4054



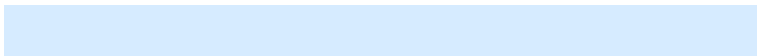
1.1582, 0.5193, 0.4259

Inverse Universe

The Inverse Universe completely reimagines the original color for something new.



58.4187, 0.2920, 0.3122



81.1397, 0.2875, 0.3084



52.0851, 0.2915, 0.2950



13.7260, 0.2982, 0.3174



10.2963, 0.1790, 0.1644



0.8394, 0.1870, 0.1932

Previews

White Background



This preview shows how the Yxy color 60.6236, 0.3349, 0.3452 looks on a white background.

Color Contrast Check

Large Text (above 18pt) WCAG AA × Fail

Any Text WCAG AA × Fail

Large Text (above 18pt) WCAG AAA × Fail

Any Text WCAG AAA × Fail

Black Background



This preview shows how the Yxy color 60.6236, 0.3349, 0.3452 looks on a black background.

Color Contrast Check

Large Text (above 18pt) WCAG AA ✓ Pass

Any Text WCAG AA ✓ Pass

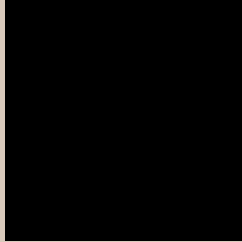
Large Text (above 18pt) WCAG AAA ✓ Pass

Any Text WCAG AAA ✓ Pass

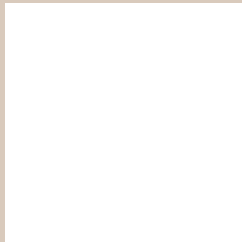
If you want to check with other color combinations, try the [Color Contrast Checker](#).

Yxy 60.6236, 0.3349, 0.3452

Background



This preview shows how black text looks on a background with the Yxy color 60.6236, 0.3349, 0.3452.



This preview shows how white text looks on a background with the Yxy color 60.6236, 0.3349, 0.3452.

Color Blindness Simulation

Color vision deficiency is a very complex topic, and I could not describe the different causes any better than Wikipedia does, so if you want to learn more, you should check out their [article about color blindness](#).

Dichromacy



Original Color

60.6236, 0.3349, 0.3452

Protanopia

60.8569, 0.3299, 0.3465

Deuteranopia

60.4296, 0.3456, 0.3380



Tritanopia

60.4589, 0.3183, 0.3111

Trichromacy



Original Color

60.6236, 0.3349, 0.3452

Protanomaly

60.6821, 0.3316, 0.3453

Deuteranomaly

60.5285, 0.3411, 0.3404

Tritanomaly

60.3147, 0.3241, 0.3222

Monochromacy



Original Color

60.6236, 0.3349, 0.3452

Achromatopsia

61.0496, 0.3127, 0.3290

Achromatomaly

60.8646, 0.3202, 0.3348

CSS Examples

Text

The CSS property to change the color of the text to Yxy 60.6236, 0.3349, 0.3452 is called "color". The color property can be set on classes, ids or directly on the HTML element.

This example shows how text in the color `rgb(217, 202, 188)` looks like.

```
.text, #text, p{  
    color:rgb(217, 202, 188)  
}
```

If you want to add a text shadow in that color use the text-shadow property, you can generate a text shadow directly with our [CSS Text Shadow Generator](#).

Here you see how black text with a 4 pixel rgb(217, 202, 188) colored shadow looks like.

```
.shadow{ text-shadow: 4px 4px 2px rgb(217, 202, 188) }
```

Border

The CSS property to change the border of an element to Yxy 60.6236, 0.3349, 0.3452 is called "border". The border property can be set on classes, ids or directly on the HTML element.

This example shows the color as border, it can be applied via the CSS property "border" or "border-color".

```
.border, #border, table{ border:4px solid rgb(217, 202, 188) }
```

If only the border color should be changed use the property border-color.

```
.border{ border-color:rgb(217, 202, 188) }
```

If you want to add a box shadow in that color use:

Here you see how a box with a 4 pixel rgb(217, 202, 188) colored shadow looks like.

```
.boxshadow{ -moz-box-shadow:4px 4px 4px  
4px rgb(217, 202, 188); -webkit-box-  
shadow:4px 4px 4px 4px rgb(217, 202, 188);  
box-shadow:4px 4px 4px 4px rgb(217, 202,  
188) }
```


Background

The CSS property to change the background color of an element to Yxy 60.6236, 0.3349, 0.3452 is called "background". The background property can be set on classes, ids or directly on the HTML element.

```
.background, #background, body{  
background: rgb(217, 202, 188) }
```

If only the background color should be changed can be used:

```
.background{ background-color: rgb(217,  
202, 188) }
```

This example shows the color as background, it is applied via the CSS property "background".

To optimize and compress your CSS code, you can use our [online CSS compressor and optimizer](#) based on csstidy. If you want to create a linear or radial gradient as background or border, check our [CSS Gradient Generator](#).

Hey! You found this booklet interesting? Support Converting Colors with the new Membership Option!

The pro membership hides all ads, plus gives you double the colors in the color bucket, and more awesome pro features!

[Learn more, Memberships starting at \\$2.50/m!](#)

**Follow me
on Twitter!**

@ConvertingColor