

Converting Colors

$Yxy(60.6917, 0.3274, 0.3201)$

Have a look what the booklet for
Yxy(60.6917, 0.3274, 0.3201)
contains.

Yxy(60.6917, 0.3274, 0.3201)	3
Conversions	4
Details	6
Harmonies	12
Previews	24
Color Blindness Simulation	27
CSS Examples	30

Color

Yxy(60.6917, 0.3274, 0.3201)

Conversions

Conversions Part 1

Format	Color
Hex	E0C6CE
RGB	224, 198, 206
RGB Percent	88%, 78%, 81%
CMY	0.1216, 0.2235, 0.1922
CMYK	0.00, 0.12, 0.08, 0.12
HSL	342°, 30%, 83%
HSV	342°, 12%, 88%
XYZ	62.0758, 60.6917, 66.8348
YIQ	206.6860, 12.9280, 8.0000

Conversions

Conversions Part 2

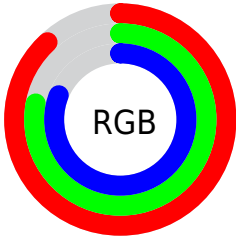
Format	Color
R _Y B	224, 198, 206
Decimal	14730958
CIE Lab	82.21, 10.48, -0.64
CIE LCh	82, 10.497, 356.506
Yxy	60.6917, 0.3274, 0.3201
Android (android.graphics.Color)	4292921038 (0xFFE0C6CE)
YUV	206.6860, -0.3382, 15.1844
Hunter-Lab	77.9049, 5.8980, 3.6684

Details

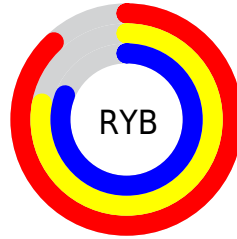
The Yxy color **60.6917, 0.3274, 0.3201** is a light color, and the websafe version is hex **CCCCCC**. A complement of this color would be **70.2783, 0.2999, 0.3381**, and the grayscale version is **62.1821, 0.3127, 0.3290**.

A 20% lighter version of the original color is **100.0000, 0.3127, 0.3290**, and **30.6485, 0.3313, 0.3173** is the 20% darker color. If you saturate the color by 10%, you get **50.4827, 0.3432, 0.3119**, and if you desaturate by 10%, it is **72.4949, 0.3145, 0.3278**.

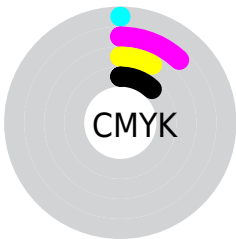
Distribution



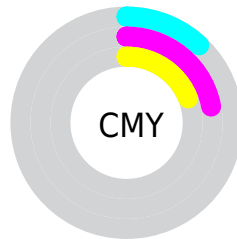
- Red (88%)
- Green (78%)
- Blue (81%)



- Red (88%)
- Yellow (78%)
- Blue (81%)



- Cyan (0%)
- Magenta (12%)
- Yellow (8%)
- Black (12%)




- Cyan (12%)
- Magenta (22%)
- Yellow (19%)

Brightness & Saturation Gradients


These gradients show how the Yxy color 60.6917, 0.3274, 0.3201 changes by changing the brightness by 10 percent. The first figure shows a shift by +10% for each color and the second figure -10%.

Similar to the brightness gradients but the following saturation gradients show a change of the Yxy color 60.6917, 0.3274, 0.3201 by changing the saturation by 10% instead.

 60.6917, 0.3274,
0.3201

 60.6917, 0.3274,
0.3201

427.1427, 0.3204,
0.3244

 43.9764, 0.3291,
0.3191

105.8324, 0.3249,
0.3216

 30.6520, 0.3311,
0.3178


135.0266, 0.3240,
0.3222

 20.3340, 0.3338,
0.3162


169.1493, 0.3232,
0.3227

 12.6380, 0.3375,
0.3140

208.5847, 0.3225,
0.3231

 7.1798, 0.3426,
0.3110

253.7174, 0.3218,
0.3235

 3.5748, 0.3503,
0.3063

304.9317, 0.3213,

 1.4387, 0.3635,

0.3238

0.2985

362.6120, 0.3208,
0.3241

0.2450, 0.4676,
0.2344

0.0000, 0.0000,
0.0000

60.6917, 0.3274,
0.3201

60.6917, 0.3274,
0.3201

50.4827, 0.3432,
0.3119

72.4949, 0.3145,
0.3278

41.7914, 0.3625,
0.3035

85.9484, 0.3041,
0.3350

34.5471, 0.3858,
0.2953

94.4302, 0.2954,
0.3314

28.6705, 0.4135,
0.2879

94.5880, 0.2940,
0.3289

■ 24.0741, 0.4455,
0.2823

■ 20.6607, 0.4807,
0.2795

■ 18.3188, 0.5171,
0.2809

■ 16.9148, 0.5514,
0.2871

■ 16.2763, 0.5767,
0.2950

Harmonies

Analogous

The Analogous color harmony consists of three colors that are next to each other on the color wheel.



60.6917, 0.3143, 0.3110



60.6917, 0.3274, 0.3201



60.6917, 0.3366, 0.3316

Triad

The Triadic color harmony groups three colors that are evenly spaced from another and form a triangle on the color wheel.



60.6917, 0.3274, 0.3201



60.6917, 0.3241, 0.3525



60.6917, 0.2869, 0.3146

Complementary

The Complementary color scheme is a pair of colors which are on the opposite of each other on the color wheel.



60.6917, 0.3274, 0.3201



70.2783, 0.2999, 0.3381

Split Complementary

Split-complementary colors differ from the complementary color scheme. The scheme consists of three colors, the original color and two neighbors of the complement color.



60.6917, 0.2894, 0.3257



60.6917, 0.3274, 0.3201



60.6917, 0.3107, 0.3480

Square

The Square scheme is like the rectangle color scheme, but the four colors are evenly spaced on the color wheel.



60.6917, 0.3274, 0.3201



60.6917, 0.3346, 0.3504



60.6917, 0.2980, 0.3380



60.6917, 0.2911, 0.3077

Rectangle

The Rectangle color scheme consists of four colors that form a rectangle on the color wheel.



60.6917, 0.3274, 0.3201



60.6917, 0.3392, 0.3392



60.6917, 0.2980, 0.3380



60.6917, 0.2870, 0.3180

Sweetspot

The Sweet Spot groups the original color and five complimentary colors.



60.6944, 0.3274, 0.3201



94.8793, 0.3162, 0.3268



60.3363, 0.3077, 0.3000



20.0225, 0.3172, 0.3261



0.0000, 0.0000, 0.0000



21.4041, 0.3127, 0.3290

Same Dimension

The Same Dimension uses a secret algorithm to generate beautiful new colors.



60.6944, 0.3274, 0.3201



77.8086, 0.3310, 0.3181



62.5292, 0.3328, 0.3344



13.7696, 0.3244, 0.3218



9.4917, 0.5727, 0.2929



0.6736, 0.5287, 0.2686

Inverse Universe

The Inverse Universe completely reimagines the original color for something new.



60.6944, 0.3274, 0.3201



77.8086, 0.3310, 0.3181



68.1756, 0.2949, 0.3235



13.7696, 0.3244, 0.3218



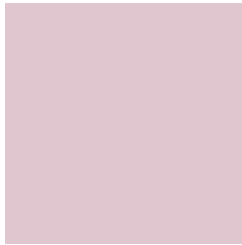
9.4917, 0.5727, 0.2929



0.6736, 0.5287, 0.2686

Previews

White Background



This preview shows how the Yxy color 60.6917, 0.3274, 0.3201 looks on a white background.

Color Contrast Check

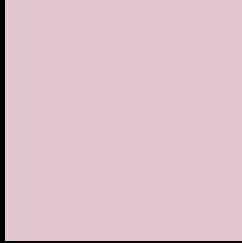
Large Text (above 18pt) WCAG AA × Fail

Any Text WCAG AA × Fail

Large Text (above 18pt) WCAG AAA × Fail

Any Text WCAG AAA × Fail

Black Background



This preview shows how the Yxy color 60.6917, 0.3274, 0.3201 looks on a black background.

Color Contrast Check

Large Text (above 18pt) WCAG AA ✓ Pass

Any Text WCAG AA ✓ Pass

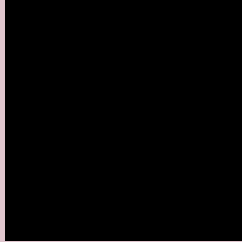
Large Text (above 18pt) WCAG AAA ✓ Pass

Any Text WCAG AAA ✓ Pass

If you want to check with other color combinations, try the [Color Contrast Checker](#).

Yxy 60.6917, 0.3274, 0.3201

Background



This preview shows how black text looks on a background with the Yxy color 60.6917, 0.3274, 0.3201.



This preview shows how white text looks on a background with the Yxy color 60.6917, 0.3274, 0.3201.

Color Blindness Simulation

Color vision deficiency is a very complex topic, and I could not describe the different causes any better than Wikipedia does, so if you want to learn more, you should check out their [article about color blindness](#).

Dichromacy



Original Color

60.6917, 0.3274, 0.3201

Protanopia

61.0546, 0.3115, 0.3232

Deuteranopia

60.6917, 0.3274, 0.3201



Tritanopia

60.6935, 0.3238, 0.3124

Trichromacy



Original Color

60.6917, 0.3274, 0.3201

Protanomaly

60.9413, 0.3169, 0.3222

Deuteranomaly

60.6917, 0.3274, 0.3201

Tritanomaly

60.5932, 0.3253, 0.3146

Monochromacy



Original Color

60.6917, 0.3274, 0.3201

Achromatopsia

62.3960, 0.3127, 0.3290

Achromatomaly

61.8369, 0.3175, 0.3256

CSS Examples

Text

The CSS property to change the color of the text to Yxy 60.6917, 0.3274, 0.3201 is called "color". The color property can be set on classes, ids or directly on the HTML element.

This example shows how text in the color `rgb(224, 198, 206)` looks like.

```
.text, #text, p{  
    color:rgb(224, 198, 206)  
}
```

If you want to add a text shadow in that color use the text-shadow property, you can generate a text shadow directly with our [CSS Text Shadow Generator](#).

Here you see how black text with a 4 pixel rgb(224, 198, 206) colored shadow looks like.

```
.shadow{ text-shadow: 4px 4px 2px rgb(224, 198, 206) }
```

Border

The CSS property to change the border of an element to Yxy 60.6917, 0.3274, 0.3201 is called "border". The border property can be set on classes, ids or directly on the HTML element.

This example shows the color as border, it can be applied via the CSS property "border" or "border-color".

```
.border, #border, table{ border:4px solid rgb(224, 198, 206) }
```

If only the border color should be changed use the property `border-color`.

```
.border{ border-color:rgb(224, 198, 206) }
```

If you want to add a box shadow in that color use:

Here you see how a box with a 4 pixel `rgb(224, 198, 206)` colored shadow looks like.

```
.boxshadow{ -moz-box-shadow:4px 4px 4px  
4px rgb(224, 198, 206); -webkit-box-  
shadow:4px 4px 4px 4px rgb(224, 198, 206);  
box-shadow:4px 4px 4px 4px rgb(224, 198,  
206) }
```


Background

The CSS property to change the background color of an element to Yxy 60.6917, 0.3274, 0.3201 is called "background". The background property can be set on classes, ids or directly on the HTML element.

```
.background, #background, body{  
background: rgb(224, 198, 206) }
```

If only the background color should be changed can be used:

```
.background{ background-color: rgb(224,  
198, 206) }
```

This example shows the color as background, it is applied via the CSS property "background".

To optimize and compress your CSS code, you can use our [online CSS compressor and optimizer](#) based on csstidy. If you want to create a linear or radial gradient as background or border, check our [CSS Gradient Generator](#).

Hey! You found this booklet interesting? Support Converting Colors with the new Membership Option!

The pro membership hides all ads, plus gives you double the colors in the color bucket, and more awesome pro features!

[Learn more, Memberships starting at \\$2.50/m!](#)

**Follow me
on Twitter!**

@ConvertingColor