

Converting Colors

$Yxy(60.6951, 0.3332, 0.3289)$

Have a look what the booklet for
Yxy(60.6951, 0.3332, 0.3289)
contains.

Yxy(60.8177, 0.3326, 0.3291)	3
Conversions	4
Details	6
Harmonies	12
Previews	24
Color Blindness Simulation	27
CSS Examples	30

Color

Yxy(60.8177, 0.3326, 0.3291)

Conversions

Conversions Part 1

Format	Color
Hex	E0C7C7
RGB	224, 199, 199
RGB Percent	88%, 78%, 78%
CMY	0.1217, 0.2195, 0.2197
CMYK	0.00, 0.11, 0.11, 0.12
HSL	0°, 29%, 83%
HSV	0°, 11%, 88%
XYZ	61.4645, 60.8177, 62.5179
YIQ	206.4750, 14.9000, 5.3000

Conversions

Conversions Part 2

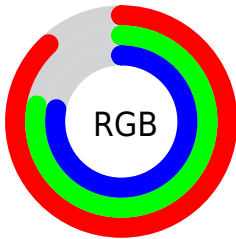
Format	Color
R _Y B	224, 199, 199
Decimal	14731207
CIE Lab	82.28, 8.76, 3.22
CIE LCh	82, 9.329, 20.183
Yxy	60.8177, 0.3326, 0.3291
Android (android.graphics.Color)	4292921287 (0xFFE0C7C7)
YUV	206.4750, -3.6852, 15.3694
Hunter-Lab	77.9857, 4.2099, 7.0597

Details

The Yxy color $60.8177, 0.3326, 0.3291$ is a light color, and the websafe version is hex `CCCCCC`. A complement of this color would be $70.7962, 0.2956, 0.3289$, and the grayscale version is $62.0578, 0.3127, 0.3290$.

A 20% lighter version of the original color is $100.0000, 0.3127, 0.3290$, and $30.7301, 0.3384, 0.3291$ is the 20% darker color. If you saturate the color by 10%, you get $50.3089, 0.3552, 0.3292$, and if you desaturate by 10%, it is $72.9972, 0.3146, 0.3290$.

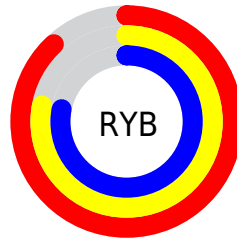
Distribution



Red (88%)

Green (78%)

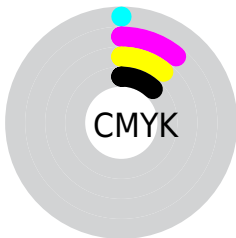
Blue (78%)



Red (88%)

Yellow (78%)

Blue (78%)

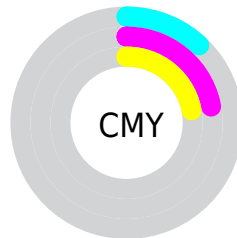


Cyan (0%)

Magenta (11%)

Yellow (11%)

Black (12%)



Cyan (12%)


Magenta (22%)

Yellow (22%)

Brightness & Saturation Gradients


These gradients show how the Yxy color 60.8177, 0.3326, 0.3291 changes by changing the brightness by 10 percent. The first figure shows a shift by +10% for each color and the second figure -10%.

Similar to the brightness gradients but the following saturation gradients show a change of the Yxy color 60.8177, 0.3326, 0.3291 by changing the saturation by 10% instead.


 60.8177, 0.3326,
0.3291

 60.8177, 0.3326,
0.3291

427.6053, 0.3231,
0.3291

 44.0781, 0.3349,
0.3291

106.0149, 0.3292,
0.3291

 30.7319, 0.3377,
0.3290


135.2413, 0.3279,
0.3291

 20.3948, 0.3414,
0.3290


169.3987, 0.3268,
0.3291

 12.6823, 0.3464,
0.3289

208.8716, 0.3259,
0.3291

 7.2102, 0.3535,
0.3286

254.0443, 0.3250,
0.3291

 3.5939, 0.3643,
0.3282

305.3012, 0.3243,

 1.4491, 0.3828,

0.3291

363.0267, 0.3236,
0.3291

0.3271

0.2525, 0.6001,
0.3339

0.0000, 0.0000,
0.0000

60.8177, 0.3326,
0.3291

60.8177, 0.3326,
0.3291

50.3089, 0.3552,
0.3292

72.9972, 0.3146,
0.3290

41.3903, 0.3834,
0.3293

86.9071, 0.3001,
0.3289

33.9869, 0.4181,
0.3295

94.5833, 0.2940,
0.3289

28.0145, 0.4594,
0.3296

■ 23.3809, 0.5061,
0.3298

■ 19.9828, 0.5540,
0.3299

■ 17.7021, 0.5966,
0.3300

■ 16.3976, 0.6261,
0.3300

■ 15.8509, 0.6400,
0.3300

Harmonies

Analogous

The Analogous color harmony consists of three colors that are next to each other on the color wheel.



60.8177, 0.3235, 0.3191



60.8177, 0.3326, 0.3291



60.8177, 0.3363, 0.3392

Triad

The Triadic color harmony groups three colors that are evenly spaced from another and form a triangle on the color wheel.



60.8177, 0.3326, 0.3291



60.8177, 0.3135, 0.3471



60.8177, 0.2923, 0.3110

Complementary

The Complementary color scheme is a pair of colors which are on the opposite of each other on the color wheel.



60.8177, 0.3326, 0.3291



70.7962, 0.2956, 0.3289

Split Complementary

Split-complementary colors differ from the complementary color scheme. The scheme consists of three colors, the original color and two neighbors of the complement color.



60.8177, 0.2897, 0.3181



60.8177, 0.3326, 0.3291



60.8177, 0.3018, 0.3392

Square

The Square scheme is like the rectangle color scheme, but the four colors are evenly spaced on the color wheel.



60.8177, 0.3326, 0.3291



60.8177, 0.3251, 0.3499



60.8177, 0.2932, 0.3284



60.8177, 0.3002, 0.3088

Rectangle

The Rectangle color scheme consists of four colors that form a rectangle on the color wheel.



60.8177, 0.3326, 0.3291



60.8177, 0.3351, 0.3448



60.8177, 0.2932, 0.3284



60.8177, 0.2908, 0.3129

Sweetspot

The Sweet Spot groups the original color and five complimentary colors.



60.8204, 0.3326, 0.3291



94.7402, 0.3176, 0.3290



62.0603, 0.3140, 0.3016



19.9851, 0.3190, 0.3290



0.0000, 0.0000, 0.0000



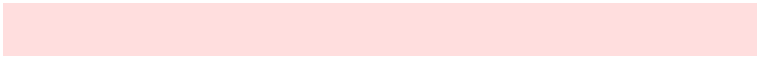
21.4041, 0.3127, 0.3290

Same Dimension

The Same Dimension uses a secret algorithm to generate beautiful new colors.



60.8204, 0.3326, 0.3291



78.7164, 0.3366, 0.3291



66.7913, 0.3309, 0.3429



13.7040, 0.3292, 0.3291



9.2303, 0.6400, 0.3301



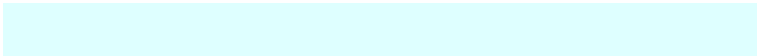
0.6410, 0.6396, 0.3304

Inverse Universe

The Inverse Universe completely reimagines the original color for something new.



70.7962, 0.2956, 0.3289



94.2127, 0.2928, 0.3289



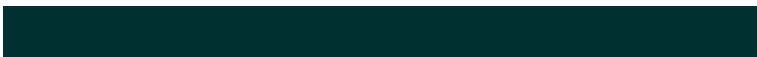
64.3450, 0.2954, 0.3147



15.5685, 0.2982, 0.3289



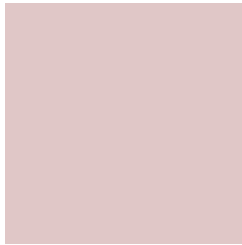
34.0555, 0.2245, 0.3283



2.3618, 0.2245, 0.3283

Previews

White Background



This preview shows how the Yxy color 60.8177, 0.3326, 0.3291 looks on a white background.

Color Contrast Check

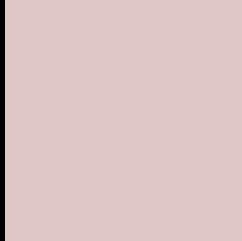
Large Text (above 18pt) WCAG AA × Fail

Any Text WCAG AA × Fail

Large Text (above 18pt) WCAG AAA × Fail

Any Text WCAG AAA × Fail

Black Background



This preview shows how the Yxy color 60.8177, 0.3326, 0.3291 looks on a black background.

Color Contrast Check

Large Text (above 18pt) WCAG AA ✓ Pass

Any Text WCAG AA ✓ Pass

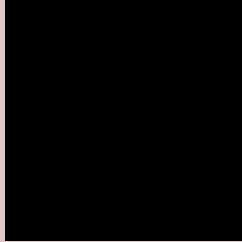
Large Text (above 18pt) WCAG AAA ✓ Pass

Any Text WCAG AAA ✓ Pass

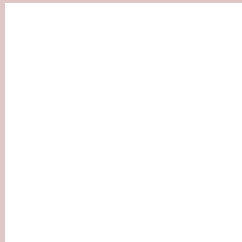
If you want to check with other color combinations, try the [Color Contrast Checker](#).

Yxy 60.8177, 0.3326, 0.3291

Background



This preview shows how black text looks on a background with the Yxy color 60.8177, 0.3326, 0.3291.



This preview shows how white text looks on a background with the Yxy color 60.8177, 0.3326, 0.3291.

Color Blindness Simulation

Color vision deficiency is a very complex topic, and I could not describe the different causes any better than Wikipedia does, so if you want to learn more, you should check out their [article about color blindness](#).

Dichromacy



Original Color

60.8177, 0.3326, 0.3291

Protanopia

61.0053, 0.3180, 0.3313

Deuteranopia

60.8426, 0.3352, 0.3280



Tritanopia

60.8547, 0.3246, 0.3124

Trichromacy



Original Color

60.8177, 0.3326, 0.3291

Protanomaly

60.7542, 0.3228, 0.3302

Deuteranomaly

60.6804, 0.3344, 0.3279

Tritanomaly

60.9007, 0.3274, 0.3190

Monochromacy



Original Color

60.8177, 0.3326, 0.3291

Achromatopsia

61.7207, 0.3127, 0.3290

Achromatomaly

61.1698, 0.3205, 0.3290

CSS Examples

Text

The CSS property to change the color of the text to Yxy 60.8177, 0.3326, 0.3291 is called "color". The color property can be set on classes, ids or directly on the HTML element.

This example shows how text in the color `rgb(224, 199, 199)` looks like.

```
.text, #text, p{  
    color:rgb(224, 199, 199)  
}
```

If you want to add a text shadow in that color use the text-shadow property, you can generate a text shadow directly with our [CSS Text Shadow Generator](#).

Here you see how black text with a 4 pixel rgb(224, 199, 199) colored shadow looks like.

```
.shadow{ text-shadow: 4px 4px 2px rgb(224, 199, 199) }
```

Border

The CSS property to change the border of an element to Yxy 60.8177, 0.3326, 0.3291 is called "border". The border property can be set on classes, ids or directly on the HTML element.

This example shows the color as border, it can be applied via the CSS property "border" or "border-color".

```
.border, #border, table{ border:4px solid rgb(224, 199, 199) }
```

If only the border color should be changed use the property `border-color`.

```
.border{ border-color:rgb(224, 199, 199) }
```

If you want to add a box shadow in that color use:

Here you see how a box with a 4 pixel `rgb(224, 199, 199)` colored shadow looks like.

```
.boxshadow{ -moz-box-shadow:4px 4px 4px  
4px rgb(224, 199, 199); -webkit-box-  
shadow:4px 4px 4px 4px rgb(224, 199, 199);  
box-shadow:4px 4px 4px 4px rgb(224, 199,  
199) }
```


Background

The CSS property to change the background color of an element to Yxy 60.8177, 0.3326, 0.3291 is called "background". The background property can be set on classes, ids or directly on the HTML element.

```
.background, #background, body{  
background: rgb(224, 199, 199) }
```

If only the background color should be changed can be used:

```
.background{ background-color: rgb(224,  
199, 199) }
```

This example shows the color as background, it is applied via the CSS property "background".

To optimize and compress your CSS code, you can use our [online CSS compressor and optimizer](#) based on csstidy. If you want to create a linear or radial gradient as background or border, check our [CSS Gradient Generator](#).

Hey! You found this booklet interesting? Support Converting Colors with the new Membership Option!

The pro membership hides all ads, plus gives you double the colors in the color bucket, and more awesome pro features!

[Learn more, Memberships starting at \\$2.50/m!](#)

**Follow me
on Twitter!**

@ConvertingColor