

Converting Colors

$Yxy(60.7053, 0.3256, 0.3377)$

Have a look what the booklet for
Yxy(60.7053, 0.3256, 0.3377)
contains.

Yxy(60.6491, 0.3255, 0.3383)	3
<i>Conversions</i>	4
<i>Details</i>	6
<i>Harmonies</i>	12
<i>Previews</i>	24
<i>Color Blindness Simulation</i>	27
<i>CSS Examples</i>	30

Color

Yxy(60.6491, 0.3255, 0.3383)

Conversions

Conversions Part 1

Format	Color
Hex	D4CBC3
RGB	212, 203, 195
RGB Percent	83%, 80%, 76%
CMY	0.1687, 0.2039, 0.2352
CMYK	0.00, 0.04, 0.08, 0.17
HSL	28°, 16%, 80%
HSV	28°, 8%, 83%
XYZ	58.3544, 60.6491, 60.2726
YIQ	204.7790, 7.9320, -0.5800

Conversions

Conversions Part 2

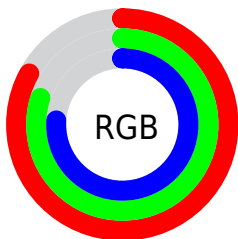
Format	Color
R _Y B	212, 210, 195
Decimal	13945795
CIE Lab	82.19, 1.73, 5.08
CIE LCh	82, 5.362, 71.195
Yxy	60.6491, 0.3255, 0.3383
Android (android.graphics.Color)	4292135875 (0xFFD4CBC3)
YUV	204.7790, -4.8210, 6.3328
Hunter-Lab	77.8775, -2.5340, 8.6273

Details

The Yxy color **60.6491, 0.3255, 0.3383** is a light color, and the websafe version is hex **CCCCCC**. A complement of this color would be **59.5373, 0.3004, 0.3195**, and the grayscale version is **60.9305, 0.3127, 0.3290**.

A 20% lighter version of the original color is **99.8083, 0.3144, 0.3319**, and **30.5861, 0.3288, 0.3414** is the 20% darker color. If you saturate the color by 10%, you get **54.6548, 0.3436, 0.3506**, and if you desaturate by 10%, it is **67.1677, 0.3097, 0.3268**.

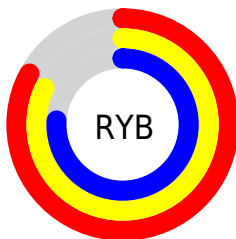
Distribution



Red (83%)

Green (80%)

Blue (76%)



Red (83%)

Yellow (82%)

Blue (76%)

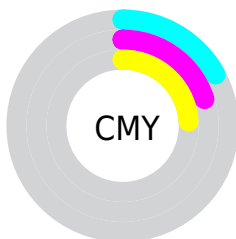


Cyan (0%)

Magenta (4%)

Yellow (8%)

Black (17%)



Cyan (17%)

Magenta (20%)

Yellow (24%)

Brightness & Saturation Gradients

These gradients show how the Yxy color 60.6491, 0.3255, 0.3383 changes by changing the brightness by 10 percent. The first figure shows a shift by +10% for each color and the second figure -10%.

Similar to the brightness gradients but the following saturation gradients show a change of the Yxy color 60.6491, 0.3255, 0.3383 by changing the saturation by 10% instead.

■ 60.6491, 0.3255,
0.3383

■ 60.6491, 0.3255,
0.3383

426.9862, 0.3194,
0.3339

■ 43.9420, 0.3270,
0.3393

105.7707, 0.3233,
0.3367

■ 30.6249, 0.3288,
0.3406

134.9540, 0.3225,
0.3361

■ 20.3134, 0.3312,
0.3423

169.0649, 0.3218,
0.3356

■ 12.6231, 0.3343,
0.3446

208.4877, 0.3212,
0.3352

■ 7.1695, 0.3388,
0.3478

253.6068, 0.3206,
0.3348

■ 3.5683, 0.3457,
0.3525

304.8067, 0.3202,

■ 1.4352, 0.3575,

0.3345

0.3605

362.4717, 0.3198,
0.3342

0.2424, 0.5293,
0.4707

0.0000, 0.0000,
0.0000

60.6491, 0.3255,
0.3383

60.6491, 0.3255,
0.3383

54.6548, 0.3436,
0.3506

67.1677, 0.3097,
0.3268

49.1631, 0.3643,
0.3633

74.2158, 0.2961,
0.3160

44.1622, 0.3877,
0.3760

81.5736, 0.2862,
0.3098

39.6370, 0.4136,
0.3882

88.2559, 0.2868,
0.3216

■ 35.5713, 0.4415,
0.3988

■ 92.7336, 0.2871,
0.3289

■ 31.9478, 0.4704,
0.4067

■ 28.7479, 0.4987,
0.4105

■ 25.9506, 0.5246,
0.4092

■ 23.5301, 0.5464,
0.4026

Harmonies

Analogous

The Analogous color harmony consists of three colors that are next to each other on the color wheel.



60.6491, 0.3260, 0.3333



60.6491, 0.3255, 0.3383



60.6491, 0.3216, 0.3408

Triad

The Triadic color harmony groups three colors that are evenly spaced from another and form a triangle on the color wheel.



60.6491, 0.3255, 0.3383



60.6491, 0.3027, 0.3306



60.6491, 0.3100, 0.3182

Complementary

The Complementary color scheme is a pair of colors which are on the opposite of each other on the color wheel.



60.6491, 0.3255, 0.3383



59.5373, 0.3004, 0.3195

Split Complementary

Split-complementary colors differ from the complementary color scheme. The scheme consists of three colors, the original color and two neighbors of the complement color.



60.6491, 0.3039, 0.3174



60.6491, 0.3255, 0.3383



60.6491, 0.2997, 0.3245

Square

The Square scheme is like the rectangle color scheme, but the four colors are evenly spaced on the color wheel.



60.6491, 0.3255, 0.3383



60.6491, 0.3084, 0.3364



60.6491, 0.3001, 0.3196



60.6491, 0.3170, 0.3218

Rectangle

The Rectangle color scheme consists of four colors that form a rectangle on the color wheel.



60.6491, 0.3255, 0.3383



60.6491, 0.3176, 0.3408



60.6491, 0.3001, 0.3196



60.6491, 0.3078, 0.3176

Sweetspot

The Sweet Spot groups the original color and five complimentary colors.



60.6518, 0.3255, 0.3383



97.9672, 0.3158, 0.3313



57.3963, 0.3195, 0.3186



20.9904, 0.3157, 0.3312



0.0000, 0.0000, 0.0000



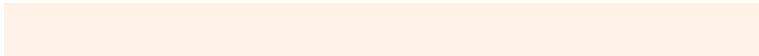
21.4041, 0.3127, 0.3290

Same Dimension

The Same Dimension uses a secret algorithm to generate beautiful new colors.



60.6518, 0.3255, 0.3383



90.1612, 0.3291, 0.3408



64.7282, 0.3246, 0.3479



13.3761, 0.3279, 0.3400



14.4522, 0.5483, 0.4029



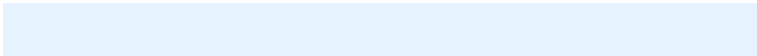
1.0367, 0.5203, 0.4251

Inverse Universe

The Inverse Universe completely reimagines the original color for something new.



59.5373, 0.3004, 0.3195



88.0524, 0.2971, 0.3169



55.6511, 0.3005, 0.3094



13.0849, 0.2982, 0.3177



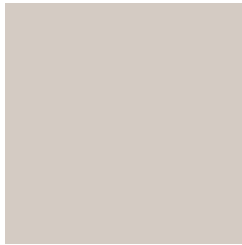
10.3057, 0.1801, 0.1684



0.7868, 0.1885, 0.1984

Previews

White Background



This preview shows how the Yxy color 60.6491, 0.3255, 0.3383 looks on a white background.

Color Contrast Check

Large Text (above 18pt) WCAG AA × Fail

Any Text WCAG AA × Fail

Large Text (above 18pt) WCAG AAA × Fail

Any Text WCAG AAA × Fail

Black Background



This preview shows how the Yxy color 60.6491, 0.3255, 0.3383 looks on a black background.

Color Contrast Check

Large Text (above 18pt) WCAG AA ✓ Pass

Any Text WCAG AA ✓ Pass

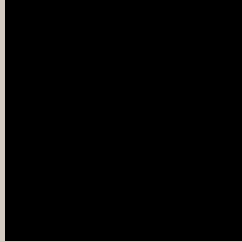
Large Text (above 18pt) WCAG AAA ✓ Pass

Any Text WCAG AAA ✓ Pass

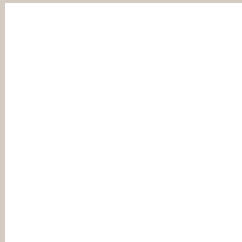
If you want to check with other color combinations, try the [Color Contrast Checker](#).

Yxy 60.6491, 0.3255, 0.3383

Background



This preview shows how black text looks on a background with the Yxy color 60.6491, 0.3255, 0.3383.

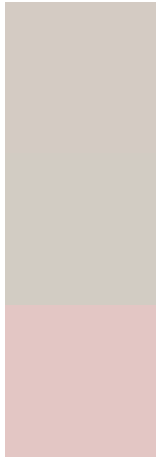


This preview shows how white text looks on a background with the Yxy color 60.6491, 0.3255, 0.3383.

Color Blindness Simulation

Color vision deficiency is a very complex topic, and I could not describe the different causes any better than Wikipedia does, so if you want to learn more, you should check out their [article about color blindness](#).

Dichromacy



Original Color

60.6491, 0.3255, 0.3383

Protanopia

60.8275, 0.3239, 0.3395

Deuteranopia

60.7046, 0.3375, 0.3313



Tritanopia

60.7135, 0.3128, 0.3109

Trichromacy



Original Color

60.6491, 0.3255, 0.3383

Protanomaly

60.9747, 0.3246, 0.3395

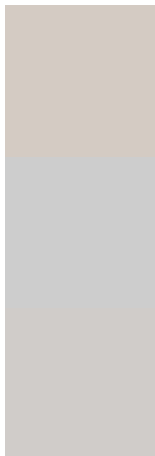
Deuteranomaly

60.8237, 0.3331, 0.3336

Tritanomaly

60.6235, 0.3177, 0.3210

Monochromacy



Original Color

60.6491, 0.3255, 0.3383

Achromatopsia

61.0496, 0.3127, 0.3290

Achromatomaly

60.8127, 0.3179, 0.3325

CSS Examples

Text

The CSS property to change the color of the text to Yxy 60.6491, 0.3255, 0.3383 is called "color". The color property can be set on classes, ids or directly on the HTML element.

This example shows how text in the color `rgb(212, 203, 195)` looks like.

```
.text, #text, p{  
    color:rgb(212, 203, 195)  
}
```

If you want to add a text shadow in that color use the text-shadow property, you can generate a text shadow directly with our [CSS Text Shadow Generator](#).

Here you see how black text with a 4 pixel rgb(212, 203, 195) colored shadow looks like.

```
.shadow{ text-shadow: 4px 4px 2px rgb(212, 203, 195) }
```

Border

The CSS property to change the border of an element to Yxy 60.6491, 0.3255, 0.3383 is called "border". The border property can be set on classes, ids or directly on the HTML element.

This example shows the color as border, it can be applied via the CSS property "border" or "border-color".

```
.border, #border, table{ border:4px solid rgb(212, 203, 195) }
```

If only the border color should be changed use the property `border-color`.

```
.border{ border-color:rgb(212, 203, 195) }
```

If you want to add a box shadow in that color use:

Here you see how a box with a 4 pixel `rgb(212, 203, 195)` colored shadow looks like.

```
.boxshadow{ -moz-box-shadow:4px 4px 4px  
4px rgb(212, 203, 195); -webkit-box-  
shadow:4px 4px 4px 4px rgb(212, 203, 195);  
box-shadow:4px 4px 4px 4px rgb(212, 203,  
195) }
```


Background

The CSS property to change the background color of an element to Yxy 60.6491, 0.3255, 0.3383 is called "background". The background property can be set on classes, ids or directly on the HTML element.

```
.background, #background, body{  
background: rgb(212, 203, 195) }
```

If only the background color should be changed can be used:

```
.background{ background-color: rgb(212,  
203, 195) }
```

This example shows the color as background, it is applied via the CSS property "background".

To optimize and compress your CSS code, you can use our [online CSS compressor and optimizer](#) based on csstidy. If you want to create a linear or radial gradient as background or border, check our [CSS Gradient Generator](#).

Hey! You found this booklet interesting? Support Converting Colors with the new Membership Option!

The pro membership hides all ads, plus gives you double the colors in the color bucket, and more awesome pro features!

[Learn more, Memberships starting at \\$2.50/m!](#)

**Follow me
on Twitter!**

@ConvertingColor