

Converting Colors

$Yxy(60.7194, 0.3265, 0.3348)$

Have a look what the booklet for
Yxy(60.7194, 0.3265, 0.3348)
contains.

Yxy(60.7194, 0.3265, 0.3348)	3
Conversions	4
Details	6
Harmonies	12
Previews	24
Color Blindness Simulation	27
CSS Examples	30

Color

Yxy(60.7194, 0.3265, 0.3348)

Conversions

Conversions Part 1

Format	Color
Hex	D7CAC5
RGB	215, 202, 197
RGB Percent	84%, 79%, 77%
CMY	0.1570, 0.2078, 0.2274
CMYK	0.00, 0.06, 0.08, 0.16
HSL	17°, 18%, 81%
HSV	17°, 8%, 84%
XYZ	59.2141, 60.7194, 61.4267
YIQ	205.3170, 9.3530, 1.2010

Conversions

Conversions Part 2

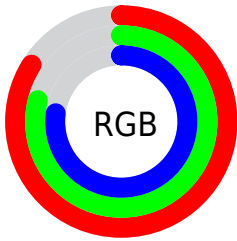
Format	Color
R _Y B	215, 204, 197
Decimal	14142149
CIE Lab	82.23, 3.64, 4.10
CIE LCh	82, 5.484, 48.386
Yxy	60.7194, 0.3265, 0.3348
Android (android.graphics.Color)	4292332229 (0xFFD7CAC5)
YUV	205.3170, -4.1003, 8.4920
Hunter-Lab	77.9227, -0.7209, 7.8073

Details

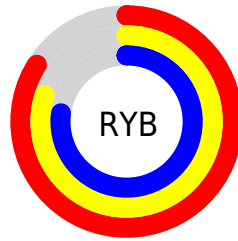
The Yxy color **60.7194, 0.3265, 0.3348** is a light color, and the websafe version is hex **CCCCCC**. A complement of this color would be **62.8429, 0.2999, 0.3231**, and the grayscale version is **61.2834, 0.3127, 0.3290**.

A 20% lighter version of the original color is **99.9358, 0.3133, 0.3300**, and **30.6366, 0.3302, 0.3367** is the 20% darker color. If you saturate the color by 10%, you get **52.8945, 0.3459, 0.3422**, and if you desaturate by 10%, it is **69.4203, 0.3102, 0.3279**.

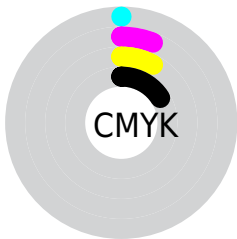
Distribution



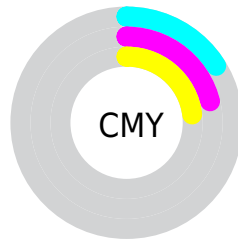
- Red (84%)
- Green (79%)
- Blue (77%)



- Red (84%)
- Yellow (80%)
- Blue (77%)



- Cyan (0%)
- Magenta (6%)
- Yellow (8%)
- Black (16%)



- Cyan (16%)
- Magenta (21%)
- Yellow (23%)

Brightness & Saturation Gradients

These gradients show how the Yxy color 60.7194, 0.3265, 0.3348 changes by changing the brightness by 10 percent. The first figure shows a shift by +10% for each color and the second figure -10%.

Similar to the brightness gradients but the following saturation gradients show a change of the Yxy color 60.7194, 0.3265, 0.3348 by changing the saturation by 10% instead.

■ 60.7194, 0.3265,
0.3348

■ 60.7194, 0.3265,
0.3348

427.2444, 0.3199,
0.3321

■ 43.9988, 0.3281,
0.3354

105.8725, 0.3242,
0.3338

■ 30.6695, 0.3300,
0.3362

135.0738, 0.3233,
0.3335

■ 20.3473, 0.3326,
0.3373

169.2041, 0.3225,
0.3332

■ 12.6478, 0.3361,
0.3386

208.6478, 0.3218,
0.3329

■ 7.1865, 0.3409,
0.3405

253.7893, 0.3213,
0.3326

■ 3.5790, 0.3484,
0.3433

305.0129, 0.3207,

■ 1.4410, 0.3612,

0.3324

0.3479

362.7032, 0.3203,
0.3322

0.2466, 0.5673,
0.4327

0.0000, 0.0000,
0.0000

60.7194, 0.3265,
0.3348

60.7194, 0.3265,
0.3348

52.8945, 0.3459,
0.3422

69.4203, 0.3102,
0.3279

45.9104, 0.3690,
0.3499

79.0155, 0.2966,
0.3215

39.7409, 0.3961,
0.3576

89.1069, 0.2886,
0.3223

34.3555, 0.4276,
0.3648

93.1806, 0.2888,
0.3289

■ 29.7219, 0.4628,
0.3707

■ 25.8052, 0.5006,
0.3741

■ 22.5675, 0.5383,
0.3741

■ 19.9673, 0.5722,
0.3696

■ 17.9546, 0.5988,
0.3610

Harmonies

Analogous

The Analogous color harmony consists of three colors that are next to each other on the color wheel.



60.7194, 0.3241, 0.3288



60.7194, 0.3265, 0.3348



60.7194, 0.3251, 0.3394

Triad

The Triadic color harmony groups three colors that are evenly spaced from another and form a triangle on the color wheel.



60.7194, 0.3265, 0.3348



60.7194, 0.3067, 0.3353



60.7194, 0.3050, 0.3170

Complementary

The Complementary color scheme is a pair of colors which are on the opposite of each other on the color wheel.



60.7194, 0.3265, 0.3348



62.8429, 0.2999, 0.3231

Split Complementary

Split-complementary colors differ from the complementary color scheme. The scheme consists of three colors, the original color and two neighbors of the complement color.



60.7194, 0.3004, 0.3186



60.7194, 0.3265, 0.3348



60.7194, 0.3014, 0.3291

Square

The Square scheme is like the rectangle color scheme, but the four colors are evenly spaced on the color wheel.



60.7194, 0.3265, 0.3348



60.7194, 0.3136, 0.3398



60.7194, 0.2991, 0.3230



60.7194, 0.3117, 0.3186

Rectangle

The Rectangle color scheme consists of four colors that form a rectangle on the color wheel.



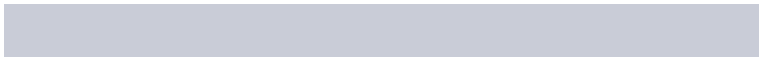
60.7194, 0.3265, 0.3348



60.7194, 0.3223, 0.3410



60.7194, 0.2991, 0.3230



60.7194, 0.3032, 0.3172

Sweetspot

The Sweet Spot groups the original color and five complimentary colors.



60.7221, 0.3265, 0.3348



96.0488, 0.3175, 0.3311



59.0387, 0.3172, 0.3140



20.3367, 0.3188, 0.3316



0.0000, 0.0000, 0.0000



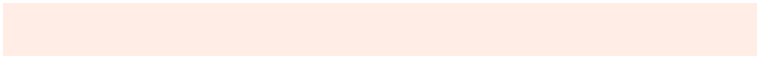
21.4041, 0.3127, 0.3290

Same Dimension

The Same Dimension uses a secret algorithm to generate beautiful new colors.



60.7221, 0.3265, 0.3348



87.2924, 0.3296, 0.3361



64.9463, 0.3255, 0.3447



12.9795, 0.3284, 0.3356



10.7296, 0.6002, 0.3617



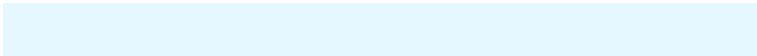
0.7866, 0.5657, 0.3890

Inverse Universe

The Inverse Universe completely reimagines the original color for something new.



62.8429, 0.2999, 0.3231



91.0228, 0.2972, 0.3218



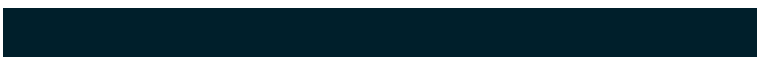
58.6406, 0.2999, 0.3128



13.4945, 0.2982, 0.3223



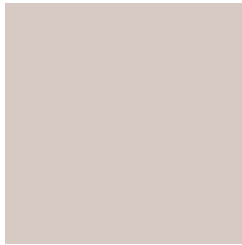
17.1405, 0.1989, 0.2362



1.1701, 0.2039, 0.2541

Previews

White Background



This preview shows how the Yxy color 60.7194, 0.3265, 0.3348 looks on a white background.

Color Contrast Check

Large Text (above 18pt) WCAG AA × Fail

Any Text WCAG AA × Fail

Large Text (above 18pt) WCAG AAA × Fail

Any Text WCAG AAA × Fail

Black Background



This preview shows how the Yxy color 60.7194, 0.3265, 0.3348 looks on a black background.

Color Contrast Check

Large Text (above 18pt) WCAG AA ✓ Pass

Any Text WCAG AA ✓ Pass

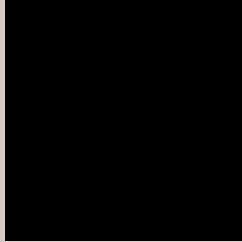
Large Text (above 18pt) WCAG AAA ✓ Pass

Any Text WCAG AAA ✓ Pass

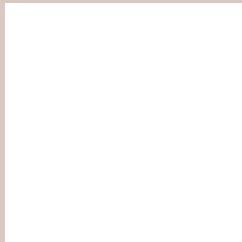
If you want to check with other color combinations, try the [Color Contrast Checker](#).

Yxy 60.7194, 0.3265, 0.3348

Background



This preview shows how black text looks on a background with the Yxy color 60.7194, 0.3265, 0.3348.

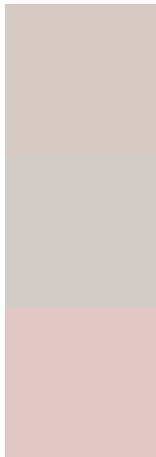


This preview shows how white text looks on a background with the Yxy color 60.7194, 0.3265, 0.3348.

Color Blindness Simulation

Color vision deficiency is a very complex topic, and I could not describe the different causes any better than Wikipedia does, so if you want to learn more, you should check out their [article about color blindness](#).

Dichromacy



Original Color

60.7194, 0.3265, 0.3348

Protanopia

60.9646, 0.3217, 0.3360

Deuteranopia

60.7963, 0.3359, 0.3291



Tritanopia

60.5049, 0.3151, 0.3110

Trichromacy



Original Color

60.7194, 0.3265, 0.3348

Protanomaly

60.7861, 0.3233, 0.3348

Deuteranomaly

60.6120, 0.3326, 0.3302

Tritanomaly

60.4615, 0.3194, 0.3199

Monochromacy



Original Color

60.7194, 0.3265, 0.3348

Achromatopsia

61.0496, 0.3127, 0.3290

Achromatomaly

61.0053, 0.3180, 0.3313

CSS Examples

Text

The CSS property to change the color of the text to Yxy 60.7194, 0.3265, 0.3348 is called "color". The color property can be set on classes, ids or directly on the HTML element.

This example shows how text in the color `rgb(215, 202, 197)` looks like.

```
.text, #text, p{  
    color:rgb(215, 202, 197)  
}
```

If you want to add a text shadow in that color use the text-shadow property, you can generate a text shadow directly with our [CSS Text Shadow Generator](#).

Here you see how black text with a 4 pixel rgb(215, 202, 197) colored shadow looks like.

```
.shadow{ text-shadow: 4px 4px 2px rgb(215, 202, 197) }
```

Border

The CSS property to change the border of an element to Yxy 60.7194, 0.3265, 0.3348 is called "border". The border property can be set on classes, ids or directly on the HTML element.

This example shows the color as border, it can be applied via the CSS property "border" or "border-color".

```
.border, #border, table{ border:4px solid rgb(215, 202, 197) }
```

If only the border color should be changed use the property border-color.

```
.border{ border-color:rgb(215, 202, 197) }
```

If you want to add a box shadow in that color use:

Here you see how a box with a 4 pixel rgb(215, 202, 197) colored shadow looks like.

```
.boxshadow{ -moz-box-shadow:4px 4px 4px  
4px rgb(215, 202, 197); -webkit-box-  
shadow:4px 4px 4px 4px rgb(215, 202, 197);  
box-shadow:4px 4px 4px 4px rgb(215, 202,  
197) }
```


Background

The CSS property to change the background color of an element to Yxy 60.7194, 0.3265, 0.3348 is called "background". The background property can be set on classes, ids or directly on the HTML element.

```
.background, #background, body{  
background: rgb(215, 202, 197) }
```

If only the background color should be changed can be used:

```
.background{ background-color: rgb(215,  
202, 197) }
```

This example shows the color as background, it is applied via the CSS property "background".

To optimize and compress your CSS code, you can use our [online CSS compressor and optimizer](#) based on csstidy. If you want to create a linear or radial gradient as background or border, check our [CSS Gradient Generator](#).

Hey! You found this booklet interesting? Support Converting Colors with the new Membership Option!

The pro membership hides all ads, plus gives you double the colors in the color bucket, and more awesome pro features!

[Learn more, Memberships starting at \\$2.50/m!](#)

**Follow me
on Twitter!**

@ConvertingColor