

Converting Colors

Yxy(61.0317, 0.3399, 0.3503)

Have a look what the booklet for
Yxy(61.0317, 0.3399, 0.3503)
contains.

Yxy(60.7618, 0.3396, 0.3498)	3
<i>Conversions</i>	4
<i>Details</i>	6
<i>Harmonies</i>	12
<i>Previews</i>	24
<i>Color Blindness Simulation</i>	27
<i>CSS Examples</i>	30

Color

Yxy(60.7618, 0.3396, 0.3498)

Conversions

Conversions Part 1

Format	Color
Hex	DBCAB8
RGB	219, 202, 184
RGB Percent	86%, 79%, 72%
CMY	0.1411, 0.2079, 0.2785
CMYK	0.00, 0.08, 0.16, 0.14
HSL	31°, 33%, 79%
HSV	31°, 16%, 86%
XYZ	58.9900, 60.7618, 53.9526
YIQ	205.0310, 15.9100, -1.9940

Conversions

Conversions Part 2

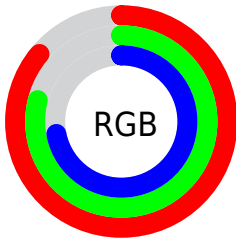
Format	Color
RYB	217, 219, 184
Decimal	14404280
CIELab	82.25, 3.00, 11.13
CIELCh	82, 11.532, 74.900
Yxy	60.7618, 0.3396, 0.3498
Android (android.graphics.Color)	4292594360 (0xFFDBCAB8)
YUV	205.0310, -10.3683, 12.2508
Hunter-Lab	77.9499, -1.3290, 13.5276

Details

The Yxy color **60.7618, 0.3396, 0.3498** is a light color, and the websafe version is hex **CCCCCC**. A complement of this color would be **57.0804, 0.2877, 0.3073**, and the grayscale version is **61.1333, 0.3127, 0.3290**.

A 20% lighter version of the original color is **99.0713, 0.3214, 0.3434**, and **30.7110, 0.3467, 0.3549** is the 20% darker color. If you saturate the color by 10%, you get **55.0929, 0.3594, 0.3636**, and if you desaturate by 10%, it is **66.9227, 0.3221, 0.3366**.

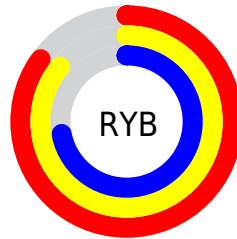
Distribution



Red (86%)

Green (79%)

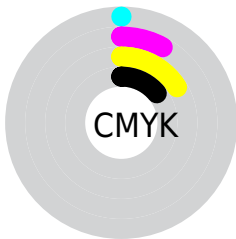
Blue (72%)



Red (85%)

Yellow (86%)

Blue (72%)

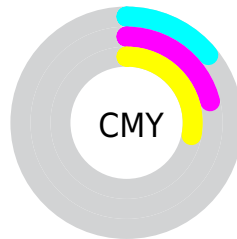


Cyan (0%)

Magenta (8%)

Yellow (16%)

Black (14%)



Cyan (14%)


Magenta (21%)


Yellow (28%)

Brightness & Saturation Gradients


These gradients show how the Yxy color 60.7618, 0.3396, 0.3498 changes by changing the brightness by 10 percent. The first figure shows a shift by +10% for each color and the second figure -10%.

Similar to the brightness gradients but the following saturation gradients show a change of the Yxy color 60.7618, 0.3396, 0.3498 by changing the saturation by 10% instead.

 60.7618, 0.3396,
0.3498

 60.7618, 0.3396,
0.3498

427.4001, 0.3267,
0.3399

 44.0330, 0.3427,
0.3521

 105.9340, 0.3350,
0.3463

 30.6964, 0.3465,
0.3550


135.1461, 0.3333,
0.3450

 20.3678, 0.3515,
0.3587


169.2881, 0.3318,
0.3439

 12.6627, 0.3581,
0.3636

208.7443, 0.3305,
0.3429

 7.1967, 0.3675,
0.3704

253.8993, 0.3294,
0.3420

 3.5854, 0.3817,
0.3804

305.1373, 0.3284,

 1.4445, 0.4081,

0.3412

0.3990

362.8428, 0.3275,
0.3406

0.2491, 0.5545,
0.4455

0.0000, 0.0000,
0.0000

60.7618, 0.3396,
0.3498

60.7618, 0.3396,
0.3498

55.0929, 0.3594,
0.3636

66.9227, 0.3221,
0.3366

49.8946, 0.3816,
0.3775

73.5804, 0.3069,
0.3241

45.1553, 0.4060,
0.3909

80.7497, 0.2935,
0.3126

40.8602, 0.4321,
0.4029

87.3276, 0.2908,
0.3183

■ 36.9930, 0.4591,
0.4124

■ 93.8047, 0.2912,
0.3289

■ 33.5363, 0.4856,
0.4180

■ 30.4708, 0.5100,
0.4186

■ 27.7740, 0.5306,
0.4138

■ 26.7877, 0.5382,
0.4109

Harmonies

Analogous

The Analogous color harmony consists of three colors that are next to each other on the color wheel.



60.7618, 0.3417, 0.3395



60.7618, 0.3396, 0.3498



60.7618, 0.3302, 0.3548

Triad

The Triadic color harmony groups three colors that are evenly spaced from another and form a triangle on the color wheel.



60.7618, 0.3396, 0.3498



60.7618, 0.2901, 0.3306



60.7618, 0.3087, 0.3067

Complementary

The Complementary color scheme is a pair of colors which are on the opposite of each other on the color wheel.



60.7618, 0.3396, 0.3498



57.0804, 0.2877, 0.3073

Split Complementary

Split-complementary colors differ from the complementary color scheme. The scheme consists of three colors, the original color and two neighbors of the complement color.



60.7618, 0.2951, 0.3041



60.7618, 0.3396, 0.3498



60.7618, 0.2846, 0.3175

Square

The Square scheme is like the rectangle color scheme, but the four colors are evenly spaced on the color wheel.



60.7618, 0.3396, 0.3498



60.7618, 0.3016, 0.3437



60.7618, 0.2864, 0.3079



60.7618, 0.3236, 0.3149

Rectangle

The Rectangle color scheme consists of four colors that form a rectangle on the color wheel.



60.7618, 0.3396, 0.3498



60.7618, 0.3212, 0.3542



60.7618, 0.2864, 0.3079



60.7618, 0.3038, 0.3051

Sweetspot

The Sweet Spot groups the original color and five complimentary colors.



60.7645, 0.3396, 0.3498



95.3168, 0.3206, 0.3353



53.5765, 0.3284, 0.3089



20.2639, 0.3217, 0.3363



0.0000, 0.0000, 0.0000



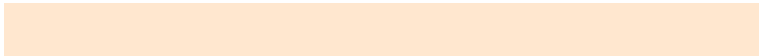
21.4041, 0.3127, 0.3290

Same Dimension

The Same Dimension uses a secret algorithm to generate beautiful new colors.



60.7645, 0.3396, 0.3498



83.1523, 0.3456, 0.3541



69.2029, 0.3366, 0.3685



14.1531, 0.3279, 0.3410



16.0995, 0.5359, 0.4127



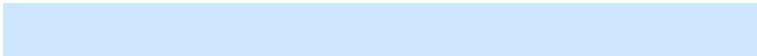
1.2153, 0.5118, 0.4318

Inverse Universe

The Inverse Universe completely reimagines the original color for something new.



57.0804, 0.2877, 0.3073



77.0648, 0.2826, 0.3025



49.5746, 0.2868, 0.2861



13.6563, 0.2982, 0.3167



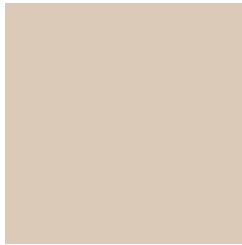
9.4123, 0.1761, 0.1539



0.7819, 0.1845, 0.1840

Previews

White Background



This preview shows how the Yxy color 60.7618, 0.3396, 0.3498 looks on a white background.

Color Contrast Check

Large Text (above 18pt) WCAG AA × Fail

Any Text WCAG AA × Fail

Large Text (above 18pt) WCAG AAA × Fail

Any Text WCAG AAA × Fail

Black Background



This preview shows how the Yxy color 60.7618, 0.3396, 0.3498 looks on a black background.

Color Contrast Check

Large Text (above 18pt) WCAG AA ✓ Pass

Any Text WCAG AA ✓ Pass

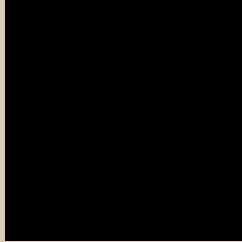
Large Text (above 18pt) WCAG AAA ✓ Pass

Any Text WCAG AAA ✓ Pass

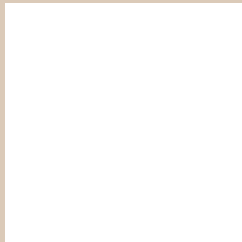
If you want to check with other color combinations, try the [Color Contrast Checker](#).

Yxy 60.7618, 0.3396, 0.3498

Background



This preview shows how black text looks on a background with the Yxy color 60.7618, 0.3396, 0.3498.

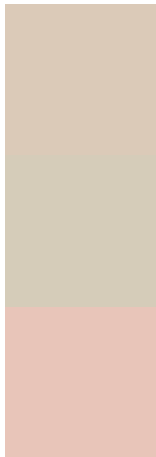


This preview shows how white text looks on a background with the Yxy color 60.7618, 0.3396, 0.3498.

Color Blindness Simulation

Color vision deficiency is a very complex topic, and I could not describe the different causes any better than Wikipedia does, so if you want to learn more, you should check out their [article about color blindness](#).

Dichromacy



Original Color

60.7618, 0.3396, 0.3498

Protanopia

60.8346, 0.3336, 0.3512

Deuteranopia

60.5911, 0.3505, 0.3425



Tritanopia

60.8802, 0.3213, 0.3123

Trichromacy



Original Color

60.7618, 0.3396, 0.3498

Protanomaly

60.6617, 0.3354, 0.3500

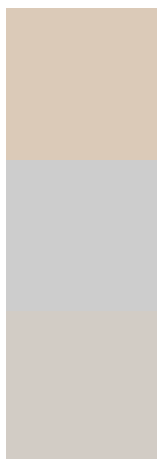
Deuteranomaly

60.6805, 0.3459, 0.3449

Tritanomaly

60.6407, 0.3287, 0.3257

Monochromacy



Original Color

60.7618, 0.3396, 0.3498

Achromatopsia

61.0496, 0.3127, 0.3290

Achromatomaly

60.9186, 0.3224, 0.3372

CSS Examples

Text

The CSS property to change the color of the text to Yxy 60.7618, 0.3396, 0.3498 is called "color". The color property can be set on classes, ids or directly on the HTML element.

This example shows how text in the color `rgb(219, 202, 184)` looks like.

```
.text, #text, p{  
    color:rgb(219, 202, 184)  
}
```

If you want to add a text shadow in that color use the text-shadow property, you can generate a text shadow directly with our [CSS Text Shadow Generator](#).

Here you see how black text with a 4 pixel rgb(219, 202, 184) colored shadow looks like.

```
.shadow{ text-shadow: 4px 4px 2px rgb(219, 202, 184) }
```

Border

The CSS property to change the border of an element to Yxy 60.7618, 0.3396, 0.3498 is called "border". The border property can be set on classes, ids or directly on the HTML element.

This example shows the color as border, it can be applied via the CSS property "border" or "border-color".

```
.border, #border, table{ border:4px solid rgb(219, 202, 184) }
```

If only the border color should be changed use the property `border-color`.

```
.border{ border-color:rgb(219, 202, 184) }
```

If you want to add a box shadow in that color use:

Here you see how a box with a 4 pixel `rgb(219, 202, 184)` colored shadow looks like.

```
.boxshadow{ -moz-box-shadow:4px 4px 4px  
4px rgb(219, 202, 184); -webkit-box-  
shadow:4px 4px 4px 4px rgb(219, 202, 184);  
box-shadow:4px 4px 4px 4px rgb(219, 202,  
184) }
```


Background

The CSS property to change the background color of an element to Yxy 60.7618, 0.3396, 0.3498 is called "background". The background property can be set on classes, ids or directly on the HTML element.

```
.background, #background, body{  
background: rgb(219, 202, 184) }
```

If only the background color should be changed can be used:

```
.background{ background-color: rgb(219,  
202, 184) }
```

This example shows the color as background, it is applied via the CSS property "background".

To optimize and compress your CSS code, you can use our [online CSS compressor and optimizer](#) based on csstidy. If you want to create a linear or radial gradient as background or border, check our [CSS Gradient Generator](#).

Hey! You found this booklet interesting? Support Converting Colors with the new Membership Option!

The pro membership hides all ads, plus gives you double the colors in the color bucket, and more awesome pro features!

[Learn more, Memberships starting at \\$2.50/m!](#)

**Follow me
on Twitter!**

@ConvertingColor