

Converting Colors

$Y_{xy}(61.1752, 0.3275, 0.3252)$

Have a look what the booklet for
Yxy(61.1752, 0.3275, 0.3252)
contains.

Yxy(61.1499, 0.3278, 0.3257)	3
<i>Conversions</i>	4
<i>Details</i>	6
<i>Harmonies</i>	12
<i>Previews</i>	24
<i>Color Blindness Simulation</i>	27
<i>CSS Examples</i>	30

Color

Yxy(61.1499, 0.3278, 0.3257)

Conversions

Conversions Part 1

Format	Color
Hex	DEC8CB
RGB	222, 200, 203
RGB Percent	87%, 78%, 80%
CMY	0.1296, 0.2156, 0.2039
CMYK	0.00, 0.10, 0.09, 0.13
HSL	352°, 25%, 83%
HSV	352°, 10%, 87%
XYZ	61.5442, 61.1499, 65.0551
YIQ	206.9200, 12.1490, 5.5970

Conversions

Conversions Part 2

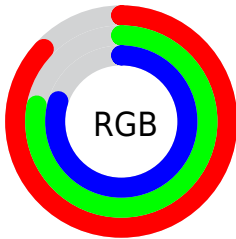
Format	Color
R _Y B	222, 200, 203
Decimal	14600395
CIE Lab	82.46, 8.17, 1.31
CIE LCh	82, 8.277, 9.090
Yxy	61.1499, 0.3278, 0.3257
Android (android.graphics.Color)	4292790475 (0xFFDEC8CB)
YUV	206.9200, -1.9326, 13.2252
Hunter-Lab	78.1984, 3.6369, 5.4141

Details

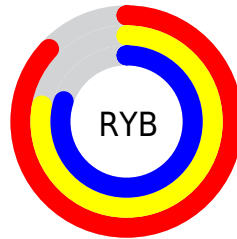
The Yxy color $61.1499, 0.3278, 0.3257$ is a light color, and the websafe version is hex `CCCCCC`. A complement of this color would be $69.6084, 0.2994, 0.3323$, and the grayscale version is $62.3469, 0.3127, 0.3290$.

A 20% lighter version of the original color is $100.0000, 0.3127, 0.3290$, and $30.9432, 0.3319, 0.3246$ is the 20% darker color. If you saturate the color by 10%, you get $50.7469, 0.3468, 0.3221$, and if you desaturate by 10%, it is $73.1638, 0.3125, 0.3290$.

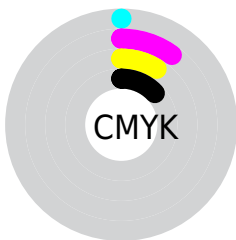
Distribution



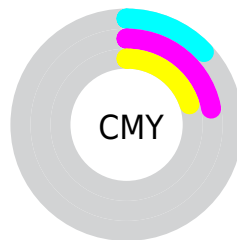
- Red (87%)
- Green (78%)
- Blue (80%)



- Red (87%)
- Yellow (78%)
- Blue (80%)



- Cyan (0%)
- Magenta (10%)
- Yellow (9%)
- Black (13%)




- Cyan (13%)
- Magenta (22%)
- Yellow (20%)

Brightness & Saturation Gradients

These gradients show how the Yxy color 61.1499, 0.3278, 0.3257 changes by changing the brightness by 10 percent. The first figure shows a shift by +10% for each color and the second figure -10%.

Similar to the brightness gradients but the following saturation gradients show a change of the Yxy color 61.1499, 0.3278, 0.3257 by changing the saturation by 10% instead.

 61.1499, 0.3278,
0.3257

 61.1499, 0.3278,
0.3257


428.8234, 0.3206,
0.3273

 44.3462, 0.3295,
0.3253


106.4960, 0.3252,
0.3263

 30.9427, 0.3317,
0.3248


135.8070, 0.3243,
0.3265

 20.5552, 0.3344,
0.3242


170.0560, 0.3234,
0.3267

 12.7993, 0.3382,
0.3233

209.6273, 0.3227,
0.3268

 7.2905, 0.3435,
0.3221

254.9053, 0.3221,
0.3270

 3.6444, 0.3515,
0.3201

306.2744, 0.3215,

 1.4767, 0.3653,

0.3271

0.3167

364.1190, 0.3210,
0.3272

0.2723, 0.4899,
0.2910

0.0000, 0.0000,
0.0000

61.1499, 0.3278,
0.3257

61.1499, 0.3278,
0.3257

50.7469, 0.3468,
0.3221

73.1638, 0.3125,
0.3290

41.8787, 0.3703,
0.3185

86.8446, 0.3003,
0.3321

34.4748, 0.3991,
0.3149

94.2606, 0.2928,
0.3289

28.4564, 0.4338,
0.3117

■ 23.7371, 0.4740,
0.3096

■ 20.2207, 0.5177,
0.3092

■ 17.7977, 0.5610,
0.3111

■ 16.3386, 0.5980,
0.3155

■ 15.6219, 0.6240,
0.3212

Harmonies

Analogous

The Analogous color harmony consists of three colors that are next to each other on the color wheel.



61.1499, 0.3185, 0.3175



61.1499, 0.3278, 0.3257



61.1499, 0.3330, 0.3349

Triad

The Triadic color harmony groups three colors that are evenly spaced from another and form a triangle on the color wheel.



61.1499, 0.3278, 0.3257



61.1499, 0.3174, 0.3465



61.1499, 0.2931, 0.3149

Complementary

The Complementary color scheme is a pair of colors which are on the opposite of each other on the color wheel.



61.1499, 0.3278, 0.3257



69.6084, 0.2994, 0.3323

Split Complementary

Split-complementary colors differ from the complementary color scheme. The scheme consists of three colors, the original color and two neighbors of the complement color.



61.1499, 0.2929, 0.3225



61.1499, 0.3278, 0.3257



61.1499, 0.3067, 0.3410

Square

The Square scheme is like the rectangle color scheme, but the four colors are evenly spaced on the color wheel.



61.1499, 0.3278, 0.3257



61.1499, 0.3269, 0.3471



61.1499, 0.2978, 0.3321



61.1499, 0.2986, 0.3112

Rectangle

The Rectangle color scheme consists of four colors that form a rectangle on the color wheel.



61.1499, 0.3278, 0.3257



61.1499, 0.3334, 0.3405



61.1499, 0.2978, 0.3321



61.1499, 0.2924, 0.3171

Sweetspot

The Sweet Spot groups the original color and five complimentary colors.



61.1526, 0.3278, 0.3257



94.7971, 0.3170, 0.3280



61.5980, 0.3113, 0.3047



20.0004, 0.3182, 0.3278



0.0000, 0.0000, 0.0000



21.4041, 0.3127, 0.3290

Same Dimension

The Same Dimension uses a secret algorithm to generate beautiful new colors.



61.1526, 0.3278, 0.3257



80.4183, 0.3317, 0.3249



64.6560, 0.3291, 0.3376



13.7306, 0.3271, 0.3259



9.2895, 0.6217, 0.3199



0.6538, 0.5861, 0.3003

Inverse Universe

The Inverse Universe completely reimagines the original color for something new.



61.1526, 0.3278, 0.3257



80.4183, 0.3317, 0.3249



65.7847, 0.2975, 0.3202



13.7306, 0.3271, 0.3259



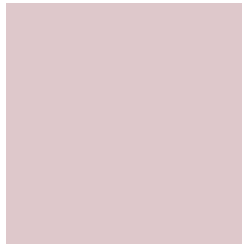
9.2895, 0.6217, 0.3199



0.6538, 0.5861, 0.3003

Previews

White Background



This preview shows how the Yxy color 61.1499, 0.3278, 0.3257 looks on a white background.

Color Contrast Check

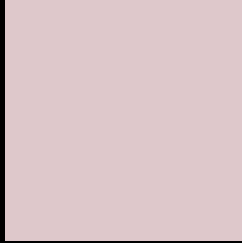
Large Text (above 18pt) WCAG AA × Fail

Any Text WCAG AA × Fail

Large Text (above 18pt) WCAG AAA × Fail

Any Text WCAG AAA × Fail

Black Background



This preview shows how the Yxy color 61.1499, 0.3278, 0.3257 looks on a black background.

Color Contrast Check

Large Text (above 18pt) WCAG AA ✓ Pass

Any Text WCAG AA ✓ Pass

Large Text (above 18pt) WCAG AAA ✓ Pass

Any Text WCAG AAA ✓ Pass

If you want to check with other color combinations, try the [Color Contrast Checker](#).

Yxy 61.1499, 0.3278, 0.3257

Background



This preview shows how black text looks on a background with the Yxy color 61.1499, 0.3278, 0.3257.



This preview shows how white text looks on a background with the Yxy color 61.1499, 0.3278, 0.3257.

Color Blindness Simulation

Color vision deficiency is a very complex topic, and I could not describe the different causes any better than Wikipedia does, so if you want to learn more, you should check out their [article about color blindness](#).

Dichromacy



Original Color

61.1499, 0.3278, 0.3257

Protanopia

61.1488, 0.3158, 0.3279

Deuteranopia

61.3274, 0.3312, 0.3246



Tritanopia

60.9312, 0.3206, 0.3112

Trichromacy



Original Color

61.1499, 0.3278, 0.3257

Protanomaly

61.3676, 0.3205, 0.3279

Deuteranomaly

61.1662, 0.3304, 0.3246

Tritanomaly

61.1880, 0.3235, 0.3168

Monochromacy



Original Color

61.1499, 0.3278, 0.3257

Achromatopsia

62.3960, 0.3127, 0.3290

Achromatomaly

61.6390, 0.3174, 0.3267

CSS Examples

Text

The CSS property to change the color of the text to Yxy 61.1499, 0.3278, 0.3257 is called "color". The color property can be set on classes, ids or directly on the HTML element.

This example shows how text in the color `rgb(222, 200, 203)` looks like.

```
.text, #text, p{  
  color:rgb(222, 200, 203)  
}
```

If you want to add a text shadow in that color use the text-shadow property, you can generate a text shadow directly with our [CSS Text Shadow Generator](#).

Here you see how black text with a 4 pixel rgb(222, 200, 203) colored shadow looks like.

```
.shadow{ text-shadow: 4px 4px 2px rgb(222, 200, 203) }
```

Border

The CSS property to change the border of an element to Yxy 61.1499, 0.3278, 0.3257 is called "border". The border property can be set on classes, ids or directly on the HTML element.

This example shows the color as border, it can be applied via the CSS property "border" or "border-color".

```
.border, #border, table{ border:4px solid rgb(222, 200, 203) }
```

If only the border color should be changed use the property border-color.

```
.border{ border-color:rgb(222, 200, 203) }
```

If you want to add a box shadow in that color use:

Here you see how a box with a 4 pixel rgb(222, 200, 203) colored shadow looks like.

```
.boxshadow{ -moz-box-shadow:4px 4px 4px  
4px rgb(222, 200, 203); -webkit-box-  
shadow:4px 4px 4px 4px rgb(222, 200, 203);  
box-shadow:4px 4px 4px 4px rgb(222, 200,  
203) }
```


Background

The CSS property to change the background color of an element to Yxy 61.1499, 0.3278, 0.3257 is called "background". The background property can be set on classes, ids or directly on the HTML element.

```
.background, #background, body{  
background: rgb(222, 200, 203) }
```

If only the background color should be changed can be used:

```
.background{ background-color: rgb(222,  
200, 203) }
```

This example shows the color as background, it is applied via the CSS property "background".

To optimize and compress your CSS code, you can use our [online CSS compressor and optimizer](#) based on csstidy. If you want to create a linear or radial gradient as background or border, check our [CSS Gradient Generator](#).

Hey! You found this booklet interesting? Support Converting Colors with the new Membership Option!

The pro membership hides all ads, plus gives you double the colors in the color bucket, and more awesome pro features!

[Learn more, Memberships starting at \\$2.50/m!](#)

**Follow me
on Twitter!**

@ConvertingColor