

Converting Colors

Yxy(61.2971, 0.3349, 0.3215)

Have a look what the booklet for
Yxy(61.2971, 0.3349, 0.3215)
contains.

Yxy(61.2811, 0.3347, 0.3214)	3
<i>Conversions</i>	4
<i>Details</i>	6
<i>Harmonies</i>	12
<i>Previews</i>	24
<i>Color Blindness Simulation</i>	27
<i>CSS Examples</i>	30

Color

Yxy(61.2811, 0.3347, 0.3214)

Conversions

Conversions Part 1

Format	Color
Hex	E7C5CC
RGB	231, 197, 204
RGB Percent	91%, 77%, 80%
CMY	0.0941, 0.2274, 0.2001
CMYK	0.00, 0.15, 0.12, 0.09
HSL	348°, 41%, 84%
HSV	348°, 15%, 91%
XYZ	63.8170, 61.2811, 65.5712
YIQ	207.9640, 18.0170, 9.3850

Conversions

Conversions Part 2

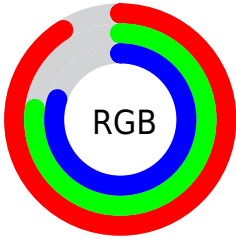
Format	Color
R _Y B	231, 197, 204
Decimal	15189452
CIE Lab	82.53, 13.13, 0.98
CIE LCh	83, 13.167, 4.289
Yxy	61.2811, 0.3347, 0.3214
Android (android.graphics.Color)	4293379532 (0xFFE7C5CC)
YUV	207.9640, -1.9543, 20.2026
Hunter-Lab	78.2822, 8.5223, 5.1348

Details

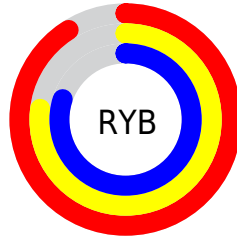
The Yxy color **61.2811, 0.3347, 0.3214** is a light color, and the websafe version is hex **FFCCCC**. A complement of this color would be **74.4074, 0.2945, 0.3368**, and the grayscale version is **63.0567, 0.3127, 0.3290**.

A 20% lighter version of the original color is **99.3636, 0.3128, 0.3281**, and **30.9609, 0.3401, 0.3190** is the 20% darker color. If you saturate the color by 10%, you get **50.7541, 0.3541, 0.3159**, and if you desaturate by 10%, it is **73.5249, 0.3190, 0.3267**.

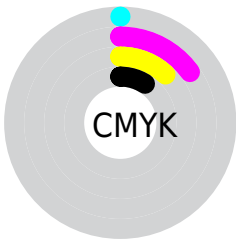
Distribution



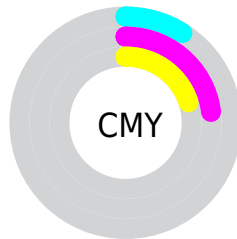
- Red (91%)
- Green (77%)
- Blue (80%)



- Red (91%)
- Yellow (77%)
- Blue (80%)



- Cyan (0%)
- Magenta (15%)
- Yellow (12%)
- Black (9%)





- Cyan (9%)
- Magenta (23%)
- Yellow (20%)

Brightness & Saturation Gradients


These gradients show how the Yxy color 61.2811, 0.3347, 0.3214 changes by changing the brightness by 10 percent. The first figure shows a shift by +10% for each color and the second figure -10%.

Similar to the brightness gradients but the following saturation gradients show a change of the Yxy color 61.2811, 0.3347, 0.3214 by changing the saturation by 10% instead.


 61.2811, 0.3347,
0.3214

 61.2811, 0.3347,
0.3214


429.3039, 0.3242,
0.3251

 44.4521, 0.3372,
0.3205


106.6858, 0.3310,
0.3227

 31.0261, 0.3403,
0.3194


136.0303, 0.3296,
0.3232

 20.6187, 0.3444,
0.3180

170.3154, 0.3283,
0.3236

 12.8456, 0.3498,
0.3161

209.9256, 0.3273,
0.3240

 7.3223, 0.3575,
0.3133

255.2451, 0.3264,
0.3243

 3.6645, 0.3691,
0.3091

306.6584, 0.3256,

 1.4877, 0.3889,

0.3246

0.3018

364.5499, 0.3248,
0.3248

0.2800, 0.5320,
0.2539

0.0000, 0.0000,
0.0000

61.2811, 0.3347,
0.3214

61.2811, 0.3347,
0.3214

50.7541, 0.3541,
0.3159

73.5249, 0.3190,
0.3267

41.8593, 0.3779,
0.3103

87.5490, 0.3064,
0.3315

34.5169, 0.4069,
0.3050

95.7289, 0.2982,
0.3290

28.6375, 0.4412,
0.3006

■ 24.1222, 0.4801,
0.2980

■ 20.8601, 0.5215,
0.2980

■ 18.7224, 0.5614,
0.3016

■ 17.5524, 0.5950,
0.3087

■ 17.1966, 0.6092,
0.3130

Harmonies

Analogous

The Analogous color harmony consists of three colors that are next to each other on the color wheel.



61.2811, 0.3191, 0.3091



61.2811, 0.3347, 0.3214



61.2811, 0.3444, 0.3358

Triad

The Triadic color harmony groups three colors that are evenly spaced from another and form a triangle on the color wheel.



61.2811, 0.3347, 0.3214



61.2811, 0.3226, 0.3579



61.2811, 0.2812, 0.3081

Complementary

The Complementary color scheme is a pair of colors which are on the opposite of each other on the color wheel.



61.2811, 0.3347, 0.3214



74.4074, 0.2945, 0.3368

Split Complementary

Split-complementary colors differ from the complementary color scheme. The scheme consists of three colors, the original color and two neighbors of the complement color.



61.2811, 0.2821, 0.3208



61.2811, 0.3347, 0.3214



61.2811, 0.3057, 0.3502

Square

The Square scheme is like the rectangle color scheme, but the four colors are evenly spaced on the color wheel.



61.2811, 0.3347, 0.3214



61.2811, 0.3372, 0.3572



61.2811, 0.2910, 0.3364



61.2811, 0.2884, 0.3013

Rectangle

The Rectangle color scheme consists of four colors that form a rectangle on the color wheel.



61.2811, 0.3347, 0.3214



61.2811, 0.3460, 0.3450



61.2811, 0.2910, 0.3364



61.2811, 0.2805, 0.3118

Sweetspot

The Sweet Spot groups the original color and five complimentary colors.



61.2838, 0.3347, 0.3214



93.1524, 0.3181, 0.3270



61.4954, 0.3088, 0.2921



19.6715, 0.3191, 0.3266



0.0000, 0.0000, 0.0000



21.4041, 0.3127, 0.3290

Same Dimension

The Same Dimension uses a secret algorithm to generate beautiful new colors.



61.2838, 0.3347, 0.3214



71.9981, 0.3408, 0.3196



65.4720, 0.3386, 0.3397



14.4160, 0.3260, 0.3242



9.6550, 0.6057, 0.3110



0.7267, 0.5657, 0.2890

Inverse Universe

The Inverse Universe completely reimagines the original color for something new.



61.2838, 0.3347, 0.3214



71.9981, 0.3408, 0.3196



69.5493, 0.2900, 0.3181



14.4160, 0.3260, 0.3242



9.6550, 0.6057, 0.3110



0.7267, 0.5657, 0.2890

Previews

White Background



This preview shows how the Yxy color 61.2811, 0.3347, 0.3214 looks on a white background.

Color Contrast Check

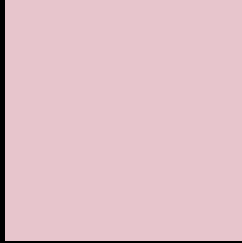
Large Text (above 18pt) WCAG AA × Fail

Any Text WCAG AA × Fail

Large Text (above 18pt) WCAG AAA × Fail

Any Text WCAG AAA × Fail

Black Background



This preview shows how the Yxy color 61.2811, 0.3347, 0.3214 looks on a black background.

Color Contrast Check

Large Text (above 18pt) WCAG AA ✓ Pass

Any Text WCAG AA ✓ Pass

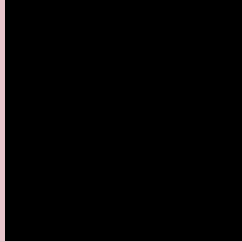
Large Text (above 18pt) WCAG AAA ✓ Pass

Any Text WCAG AAA ✓ Pass

If you want to check with other color combinations, try the [Color Contrast Checker](#).

Yxy 61.2811, 0.3347, 0.3214

Background



This preview shows how black text looks on a background with the Yxy color 61.2811, 0.3347, 0.3214.



This preview shows how white text looks on a background with the Yxy color 61.2811, 0.3347, 0.3214.

Color Blindness Simulation

Color vision deficiency is a very complex topic, and I could not describe the different causes any better than Wikipedia does, so if you want to learn more, you should check out their [article about color blindness](#).

Dichromacy



Original Color

61.2811, 0.3347, 0.3214

Protanopia

61.6266, 0.3129, 0.3255

Deuteranopia

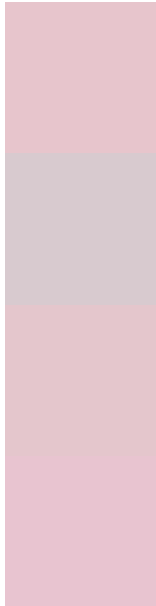
61.3752, 0.3304, 0.3235



Tritanopia

61.3388, 0.3302, 0.3127

Trichromacy



Original Color

61.2811, 0.3347, 0.3214

Protanomaly

61.3450, 0.3200, 0.3233

Deuteranomaly

61.2418, 0.3321, 0.3224

Tritanomaly

61.1897, 0.3325, 0.3159

Monochromacy



Original Color

61.2811, 0.3347, 0.3214

Achromatopsia

63.0757, 0.3127, 0.3290

Achromatomaly

62.2897, 0.3198, 0.3256

CSS Examples

Text

The CSS property to change the color of the text to Yxy 61.2811, 0.3347, 0.3214 is called "color". The color property can be set on classes, ids or directly on the HTML element.

This example shows how text in the color `rgb(231, 197, 204)` looks like.

```
.text, #text, p{  
    color:rgb(231, 197, 204)  
}
```

If you want to add a text shadow in that color use the text-shadow property, you can generate a text shadow directly with our [CSS Text Shadow Generator](#).

Here you see how black text with a 4 pixel rgb(231, 197, 204) colored shadow looks like.

```
.shadow{ text-shadow: 4px 4px 2px rgb(231, 197, 204) }
```

Border

The CSS property to change the border of an element to Yxy 61.2811, 0.3347, 0.3214 is called "border". The border property can be set on classes, ids or directly on the HTML element.

This example shows the color as border, it can be applied via the CSS property "border" or "border-color".

```
.border, #border, table{ border:4px solid rgb(231, 197, 204) }
```

If only the border color should be changed use the property `border-color`.

```
.border{ border-color:rgb(231, 197, 204) }
```

If you want to add a box shadow in that color use:

Here you see how a box with a 4 pixel `rgb(231, 197, 204)` colored shadow looks like.

```
.boxshadow{ -moz-box-shadow:4px 4px 4px  
4px rgb(231, 197, 204); -webkit-box-  
shadow:4px 4px 4px 4px rgb(231, 197, 204);  
box-shadow:4px 4px 4px 4px rgb(231, 197,  
204) }
```


Background

The CSS property to change the background color of an element to Yxy 61.2811, 0.3347, 0.3214 is called "background". The background property can be set on classes, ids or directly on the HTML element.

```
.background, #background, body{  
background: rgb(231, 197, 204) }
```

If only the background color should be changed can be used:

```
.background{ background-color: rgb(231,  
197, 204) }
```

This example shows the color as background, it is applied via the CSS property "background".

To optimize and compress your CSS code, you can use our [online CSS compressor and optimizer](#) based on csstidy. If you want to create a linear or radial gradient as background or border, check our [CSS Gradient Generator](#).

Hey! You found this booklet interesting? Support Converting Colors with the new Membership Option!

The pro membership hides all ads, plus gives you double the colors in the color bucket, and more awesome pro features!

[Learn more, Memberships starting at \\$2.50/m!](#)

**Follow me
on Twitter!**

@ConvertingColor