

# Converting Colors

Yxy(61.3036, 0.3466, 0.3449)

Have a look what the booklet for  
Yxy(61.3036, 0.3466, 0.3449)  
contains.

<b>Yxy(61.5117, 0.3466, 0.3448)</b> .....	3
<b><i>Conversions</i></b> .....	4
<b><i>Details</i></b> .....	6
<b><i>Harmonies</i></b> .....	12
<b><i>Previews</i></b> .....	24
<b><i>Color Blindness Simulation</i></b> .....	27
<b><i>CSS Examples</i></b> .....	30

# Color

**Yxy(61.5117, 0.3466, 0.3448)**

# Conversions

## Conversions Part 1

Format	Color
Hex	E5C8BA
RGB	229, 200, 186
RGB Percent	90%, 78%, 73%
CMY	0.1019, 0.2157, 0.2707
CMYK	0.00, 0.13, 0.19, 0.10
HSL	20°, 45%, 81%
HSV	20°, 19%, 90%
XYZ	61.8328, 61.5117, 55.0537
YIQ	207.0750, 21.7780, 1.7940

# Conversions

## Conversions Part 2

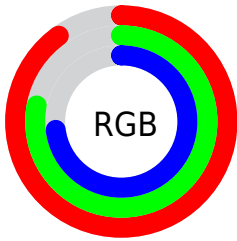
<b>Format</b>	<b>Color</b>
R <sub>Y</sub> B	229, 207, 186
Decimal	15059130
CIE Lab	82.65, 8.01, 10.76
CIE LCh	83, 13.415, 53.321
Yxy	61.5117, 0.3466, 0.3448
Android (android.graphics.Color)	4293249210 (0xFFE5C8BA)
YUV	207.0750, -10.3900, 19.2282
Hunter-Lab	78.4294, 3.4759, 13.2818

# Details

The Yxy color **61.5117, 0.3466, 0.3448** is a light color, and the websafe version is hex **FFCCCC**. A complement of this color would be **64.6927, 0.2836, 0.3126**, and the grayscale version is **62.5072, 0.3127, 0.3290**.

A 20% lighter version of the original color is **99.1908, 0.3203, 0.3415**, and **31.1355, 0.3551, 0.3482** is the 20% darker color. If you saturate the color by 10%, you get **53.8229, 0.3694, 0.3538**, and if you desaturate by 10%, it is **70.0844, 0.3272, 0.3362**.

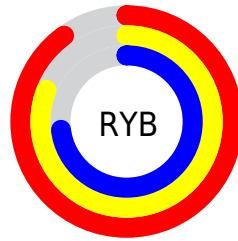
# Distribution



Red (90%)

Green (78%)

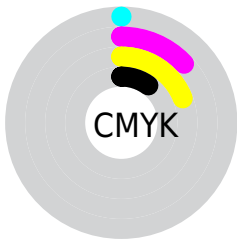
Blue (73%)



Red (90%)

Yellow (81%)

Blue (73%)

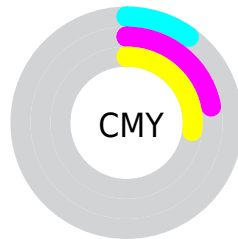


Cyan (0%)

Magenta (13%)

Yellow (19%)

Black (10%)



Cyan (10%)

Magenta (22%)


Yellow (27%)


# Brightness & Saturation Gradients

These gradients show how the Yxy color 61.5117, 0.3466, 0.3448 changes by changing the brightness by 10 percent. The first figure shows a shift by +10% for each color and the second figure -10%.


Similar to the brightness gradients but the following saturation gradients show a change of the Yxy color 61.5117, 0.3466, 0.3448 by changing the saturation by 10% instead.




 61.5117, 0.3466,  
0.3448

 61.5117, 0.3466,  
0.3448

430.1477, 0.3303,  
0.3375

 44.6383, 0.3505,  
0.3465


 107.0195, 0.3408,  
0.3423

 31.1726, 0.3553,  
0.3485


136.4226, 0.3386,  
0.3413

 20.7303, 0.3616,  
0.3511


170.7711, 0.3367,  
0.3404

 12.9270, 0.3700,  
0.3545

210.4494, 0.3351,  
0.3397

 7.3783, 0.3819,  
0.3591

255.8417, 0.3337,  
0.3390

 3.6998, 0.3999,  
0.3654

307.3327, 0.3324,

 1.5071, 0.4314,

0.3385

0.3758

365.3065, 0.3313,  
0.3379

0.2937, 0.6178,  
0.3822

0.0000, 0.0000,  
0.0000

61.5117, 0.3466,  
0.3448

61.5117, 0.3466,  
0.3448

53.8229, 0.3694,  
0.3538

70.0844, 0.3272,  
0.3362

46.9809, 0.3960,  
0.3628

79.5600, 0.3109,  
0.3281

40.9582, 0.4264,  
0.3712

89.9675, 0.2971,  
0.3206

35.7225, 0.4602,  
0.3781

95.4014, 0.2970,  
0.3290

■ 31.2391, 0.4961,  
0.3824

■ 27.4705, 0.5316,  
0.3827

■ 24.3753, 0.5636,  
0.3782

■ 21.9030, 0.5892,  
0.3692

■ 21.6425, 0.5921,  
0.3681

# Harmonies

## Analogous

The Analogous color harmony consists of three colors that are next to each other on the color wheel.



61.5117, 0.3423, 0.3305



61.5117, 0.3466, 0.3448



61.5117, 0.3416, 0.3554

# Triad

The Triadic color harmony groups three colors that are evenly spaced from another and form a triangle on the color wheel.



61.5117, 0.3466, 0.3448



61.5117, 0.2955, 0.3421



61.5117, 0.2963, 0.3003

# Complementary

The Complementary color scheme is a pair of colors which are on the opposite of each other on the color wheel.



61.5117, 0.3466, 0.3448



64.6927, 0.2836, 0.3126

# Split Complementary

Split-complementary colors differ from the complementary color scheme. The scheme consists of three colors, the original color and two neighbors of the complement color.



61.5117, 0.2844, 0.3025



61.5117, 0.3466, 0.3448



61.5117, 0.2840, 0.3263

# Square

The Square scheme is like the rectangle color scheme, but the four colors are evenly spaced on the color wheel.



61.5117, 0.3466, 0.3448



61.5117, 0.3119, 0.3543



61.5117, 0.2800, 0.3119



61.5117, 0.3129, 0.3054



# Rectangle

The Rectangle color scheme consists of four colors that form a rectangle on the color wheel.



61.5117, 0.3466, 0.3448



61.5117, 0.3337, 0.3588



61.5117, 0.2800, 0.3119



61.5117, 0.2916, 0.3002

# Sweetspot

The Sweet Spot groups the original color and five complimentary colors.



61.5145, 0.3466, 0.3448



92.6480, 0.3225, 0.3339



56.6951, 0.3254, 0.2967



19.6647, 0.3236, 0.3344



0.0000, 0.0000, 0.0000



21.4041, 0.3127, 0.3290

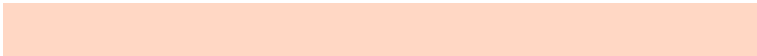


# Same Dimension

The Same Dimension uses a secret algorithm to generate beautiful new colors.



61.5145, 0.3466, 0.3448



74.0970, 0.3560, 0.3487



71.9867, 0.3424, 0.3675



15.1310, 0.3284, 0.3367



12.5666, 0.5893, 0.3703



1.0929, 0.5608, 0.3929

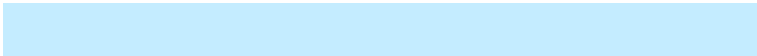


# Inverse Universe

The Inverse Universe completely reimagines the original color for something new.



64.6927, 0.2836, 0.3126



78.9303, 0.2769, 0.3084



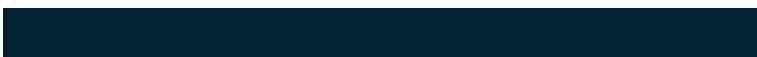
54.6186, 0.2822, 0.2873



15.5032, 0.2981, 0.3212



16.7491, 0.1942, 0.2192

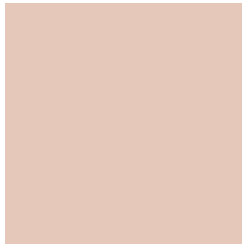


1.4051, 0.1992, 0.2371



# Previews

## White Background



This preview shows how the Yxy color 61.5117, 0.3466, 0.3448 looks on a white background.

## Color Contrast Check

Large Text (above 18pt) WCAG AA × Fail

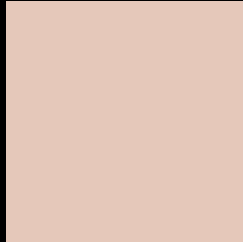
Any Text WCAG AA × Fail

Large Text (above 18pt) WCAG AAA × Fail

Any Text WCAG AAA × Fail



# Black Background



This preview shows how the Yxy color 61.5117, 0.3466, 0.3448 looks on a black background.

## Color Contrast Check

Large Text (above 18pt) WCAG AA ✓ Pass

Any Text WCAG AA ✓ Pass

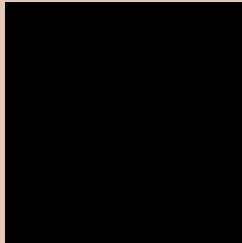
Large Text (above 18pt) WCAG AAA ✓ Pass

Any Text WCAG AAA ✓ Pass

If you want to check with other color combinations, try the [Color Contrast Checker](#).

**Yxy 61.5117, 0.3466, 0.3448**

## **Background**



This preview shows how black text looks on a background with the Yxy color 61.5117, 0.3466, 0.3448.



This preview shows how white text looks on a background with the Yxy color 61.5117, 0.3466, 0.3448.

# Color Blindness Simulation

Color vision deficiency is a very complex topic, and I could not describe the different causes any better than Wikipedia does, so if you want to learn more, you should check out their [article about color blindness](#).

## Dichromacy



### Original Color

61.5117, 0.3466, 0.3448

### Protanopia

61.6329, 0.3313, 0.3476

### Deuteranopia

61.7157, 0.3501, 0.3435



## Tritanopia

61.3891, 0.3294, 0.3116

# Trichromacy



## Original Color

61.5117, 0.3466, 0.3448

## Protanomaly

61.4028, 0.3364, 0.3463

## Deuteranomaly

61.5478, 0.3492, 0.3436

## Tritanomaly

61.2332, 0.3355, 0.3225

# Monochromacy



## Original Color

61.5117, 0.3466, 0.3448

## Achromatopsia

62.3960, 0.3127, 0.3290

## Achromatomaly

61.7563, 0.3248, 0.3348

# CSS Examples

## Text

The CSS property to change the color of the text to Yxy 61.5117, 0.3466, 0.3448 is called "color". The color property can be set on classes, ids or directly on the HTML element.

This example shows how text in the color `rgb(229, 200, 186)` looks like.

```
.text, #text, p{  
    color:rgb(229, 200, 186)  
}
```

If you want to add a text shadow in that color use the text-shadow property, you can generate a text shadow directly with our [CSS Text Shadow Generator](#).

Here you see how black text with a 4 pixel rgb(229, 200, 186) colored shadow looks like.

```
.shadow{ text-shadow: 4px 4px 2px rgb(229, 200, 186) }
```

## Border

The CSS property to change the border of an element to Yxy 61.5117, 0.3466, 0.3448 is called "border". The border property can be set on classes, ids or directly on the HTML element.

This example shows the color as border, it can be applied via the CSS property "border" or "border-color".

```
.border, #border, table{ border:4px solid rgb(229, 200, 186) }
```

If only the border color should be changed use the property `border-color`.

```
.border{ border-color:rgb(229, 200, 186) }
```

If you want to add a box shadow in that color use:

Here you see how a box with a 4 pixel `rgb(229, 200, 186)` colored shadow looks like.

```
.boxshadow{ -moz-box-shadow:4px 4px 4px  
4px rgb(229, 200, 186); -webkit-box-  
shadow:4px 4px 4px 4px rgb(229, 200, 186);  
box-shadow:4px 4px 4px 4px rgb(229, 200,  
186) }
```



# Background

The CSS property to change the background color of an element to Yxy 61.5117, 0.3466, 0.3448 is called "background". The background property can be set on classes, ids or directly on the HTML element.

```
.background, #background, body{  
background: rgb(229, 200, 186) }
```

If only the background color should be changed can be used:

```
.background{ background-color: rgb(229,  
200, 186) }
```

This example shows the color as background, it is applied via the CSS property "background".

To optimize and compress your CSS code, you can use our [online CSS compressor and optimizer](#) based on csstidy. If you want to create a linear or radial gradient as background or border, check our [CSS Gradient Generator](#).

Hey! You found this booklet interesting? Support Converting Colors with the new Membership Option!

The pro membership hides all ads, plus gives you double the colors in the color bucket, and more awesome pro features!

**[Learn more, Memberships starting at \\$2.50/m!](#)**

**Follow me  
on Twitter!**

@ConvertingColor