

Converting Colors

Yxy(61.3220, 0.3224, 0.3160)

Have a look what the booklet for
Yxy(61.3220, 0.3224, 0.3160)
contains.

Yxy(61.2380, 0.3227, 0.3157)	3
<i>Conversions</i>	4
<i>Details</i>	6
<i>Harmonies</i>	12
<i>Previews</i>	24
<i>Color Blindness Simulation</i>	27
<i>CSS Examples</i>	30

Color

Yxy(61.2380, 0.3227, 0.3157)

Conversions

Conversions Part 1

Format	Color
Hex	DFC7D3
RGB	223, 199, 211
RGB Percent	87%, 78%, 83%
CMY	0.1258, 0.2195, 0.1726
CMYK	0.00, 0.11, 0.05, 0.13
HSL	330°, 27%, 83%
HSV	330°, 11%, 87%
XYZ	62.5958, 61.2380, 70.1415
YIQ	207.5440, 10.4520, 8.8200

Conversions

Conversions Part 2

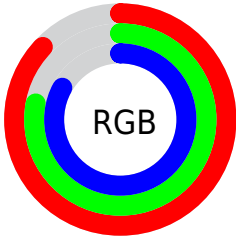
Format	Color
R _Y B	223, 199, 211
Decimal	14665683
CIE Lab	82.51, 10.42, -2.89
CIE LCh	83, 10.813, 344.491
Yxy	61.2380, 0.3227, 0.3157
Android (android.graphics.Color)	4292855763 (0xFFDFC7D3)
YUV	207.5440, 1.7038, 13.5549
Hunter-Lab	78.2547, 5.8361, 1.6353

Details

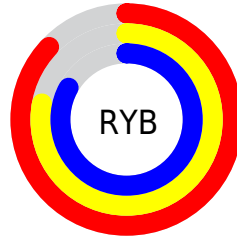
The Yxy color **61.2380, 0.3227, 0.3157** is a light color, and the websafe version is hex **CCCCCC**. A complement of this color would be **69.5872, 0.3038, 0.3427**, and the grayscale version is **62.7465, 0.3127, 0.3290**.

A 20% lighter version of the original color is **100.0000, 0.3127, 0.3290**, and **31.0100, 0.3251, 0.3115** is the 20% darker color. If you saturate the color by 10%, you get **51.1809, 0.3340, 0.3026**, and if you desaturate by 10%, it is **72.8420, 0.3133, 0.3281**.

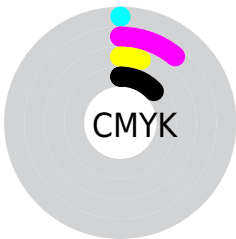
Distribution



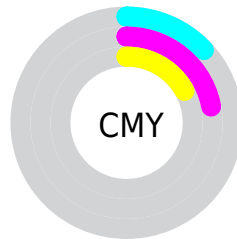
- Red (87%)
- Green (78%)
- Blue (83%)



- Red (87%)
- Yellow (78%)
- Blue (83%)



- Cyan (0%)
- Magenta (11%)
- Yellow (5%)
- Black (13%)



- Cyan (13%)
- Magenta (22%)
- Yellow (17%)

Brightness & Saturation Gradients

These gradients show how the Yxy color 61.2380, 0.3227, 0.3157 changes by changing the brightness by 10 percent. The first figure shows a shift by +10% for each color and the second figure -10%.

Similar to the brightness gradients but the following saturation gradients show a change of the Yxy color 61.2380, 0.3227, 0.3157 by changing the saturation by 10% instead.

61.2380, 0.3227,
0.3157

61.2380, 0.3227,
0.3157

429.1461, 0.3180,
0.3220

44.4173, 0.3238,
0.3142

106.6235, 0.3210,
0.3179

30.9987, 0.3252,
0.3124

135.9570, 0.3204,
0.3188

20.5978, 0.3270,
0.3100

170.2302, 0.3198,
0.3195

12.8304, 0.3294,
0.3069

209.8276, 0.3194,
0.3201

7.3118, 0.3327,
0.3025

255.1335, 0.3190,
0.3207

3.6579, 0.3377,
0.2960

306.5323, 0.3186,

1.4841, 0.3461,

0.3212

0.2852

364.4083, 0.3183,
0.3216

0.2775, 0.3986,
0.2135

0.0000, 0.0000,
0.0000

61.2380, 0.3227,
0.3157

61.2380, 0.3227,
0.3157

51.1809, 0.3340,
0.3026

72.8420, 0.3133,
0.3281

42.5969, 0.3476,
0.2892

86.0467, 0.3056,
0.3398

35.4179, 0.3636,
0.2759

93.7535, 0.2992,
0.3397

29.5675, 0.3823,
0.2635

94.4172, 0.2934,
0.3289

■ 24.9619, 0.4036,
0.2531

■ 21.5075, 0.4270,
0.2458

■ 19.0974, 0.4517,
0.2429

■ 17.6042, 0.4763,
0.2453

■ 16.8370, 0.4984,
0.2519

Harmonies

Analogous

The Analogous color harmony consists of three colors that are next to each other on the color wheel.



61.2380, 0.3087, 0.3080



61.2380, 0.3227, 0.3157



61.2380, 0.3341, 0.3268

Triad

The Triadic color harmony groups three colors that are evenly spaced from another and form a triangle on the color wheel.



61.2380, 0.3227, 0.3157



61.2380, 0.3292, 0.3531



61.2380, 0.2864, 0.3184

Complementary

The Complementary color scheme is a pair of colors which are on the opposite of each other on the color wheel.



61.2380, 0.3227, 0.3157



69.5872, 0.3038, 0.3427

Split Complementary

Split-complementary colors differ from the complementary color scheme. The scheme consists of three colors, the original color and two neighbors of the complement color.



61.2380, 0.2917, 0.3307



61.2380, 0.3227, 0.3157



61.2380, 0.3162, 0.3512

Square

The Square scheme is like the rectangle color scheme, but the four colors are evenly spaced on the color wheel.



61.2380, 0.3227, 0.3157



61.2380, 0.3379, 0.3484



61.2380, 0.3025, 0.3429



61.2380, 0.2880, 0.3093

Rectangle

The Rectangle color scheme consists of four colors that form a rectangle on the color wheel.



61.2380, 0.3227, 0.3157



61.2380, 0.3387, 0.3348



61.2380, 0.3025, 0.3429



61.2380, 0.2874, 0.3223

Sweetspot

The Sweet Spot groups the original color and five complimentary colors.



61.2407, 0.3227, 0.3157



94.9721, 0.3153, 0.3253



59.9722, 0.3045, 0.3020



20.0475, 0.3161, 0.3244



0.0000, 0.0000, 0.0000



21.4041, 0.3127, 0.3290

Same Dimension

The Same Dimension uses a secret algorithm to generate beautiful new colors.



61.2407, 0.3227, 0.3157



79.6217, 0.3252, 0.3126



60.6815, 0.3314, 0.3286



13.8144, 0.3214, 0.3173



9.9295, 0.4950, 0.2501



0.7063, 0.4610, 0.2313

Inverse Universe

The Inverse Universe completely reimagines the original color for something new.



61.2407, 0.3227, 0.3157



79.6217, 0.3252, 0.3126



70.1880, 0.2965, 0.3294



13.8144, 0.3214, 0.3173



9.9295, 0.4950, 0.2501



0.7063, 0.4610, 0.2313

Previews

White Background



This preview shows how the Yxy color 61.2380, 0.3227, 0.3157 looks on a white background.

Color Contrast Check

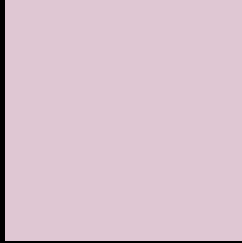
Large Text (above 18pt) WCAG AA × Fail

Any Text WCAG AA × Fail

Large Text (above 18pt) WCAG AAA × Fail

Any Text WCAG AAA × Fail

Black Background



This preview shows how the Yxy color 61.2380, 0.3227, 0.3157 looks on a black background.

Color Contrast Check

Large Text (above 18pt) WCAG AA ✓ Pass

Any Text WCAG AA ✓ Pass

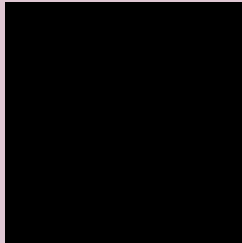
Large Text (above 18pt) WCAG AAA ✓ Pass

Any Text WCAG AAA ✓ Pass

If you want to check with other color combinations, try the [Color Contrast Checker](#).

Yxy 61.2380, 0.3227, 0.3157

Background



This preview shows how black text looks on a background with the Yxy color 61.2380, 0.3227, 0.3157.



This preview shows how white text looks on a background with the Yxy color 61.2380, 0.3227, 0.3157.

Color Blindness Simulation

Color vision deficiency is a very complex topic, and I could not describe the different causes any better than Wikipedia does, so if you want to learn more, you should check out their [article about color blindness](#).

Dichromacy



Original Color

61.2380, 0.3227, 0.3157

Protanopia

61.3062, 0.3080, 0.3175

Deuteranopia

61.2380, 0.3227, 0.3157



Tritanopia

61.3899, 0.3205, 0.3124

Trichromacy



Original Color

61.2380, 0.3227, 0.3157

Protanomaly

61.1913, 0.3133, 0.3165

Deuteranomaly

61.2380, 0.3227, 0.3157

Tritanomaly

61.3389, 0.3213, 0.3135

Monochromacy



Original Color

61.2380, 0.3227, 0.3157

Achromatopsia

63.0757, 0.3127, 0.3290

Achromatomaly

62.4122, 0.3160, 0.3245

CSS Examples

Text

The CSS property to change the color of the text to Yxy 61.2380, 0.3227, 0.3157 is called "color". The color property can be set on classes, ids or directly on the HTML element.

This example shows how text in the color `rgb(223, 199, 211)` looks like.

```
.text, #text, p{  
    color:rgb(223, 199, 211)  
}
```

If you want to add a text shadow in that color use the text-shadow property, you can generate a text shadow directly with our [CSS Text Shadow Generator](#).

Here you see how black text with a 4 pixel rgb(223, 199, 211) colored shadow looks like.

```
.shadow{ text-shadow: 4px 4px 2px rgb(223, 199, 211) }
```

Border

The CSS property to change the border of an element to Yxy 61.2380, 0.3227, 0.3157 is called "border". The border property can be set on classes, ids or directly on the HTML element.

This example shows the color as border, it can be applied via the CSS property "border" or "border-color".

```
.border, #border, table{ border:4px solid rgb(223, 199, 211) }
```

If only the border color should be changed use the property `border-color`.

```
.border{ border-color:rgb(223, 199, 211) }
```

If you want to add a box shadow in that color use:

Here you see how a box with a 4 pixel `rgb(223, 199, 211)` colored shadow looks like.

```
.boxshadow{ -moz-box-shadow:4px 4px 4px  
4px rgb(223, 199, 211); -webkit-box-  
shadow:4px 4px 4px 4px rgb(223, 199, 211);  
box-shadow:4px 4px 4px 4px rgb(223, 199,  
211) }
```


Background

The CSS property to change the background color of an element to Yxy 61.2380, 0.3227, 0.3157 is called "background". The background property can be set on classes, ids or directly on the HTML element.

```
.background, #background, body{  
background: rgb(223, 199, 211) }
```

If only the background color should be changed can be used:

```
.background{ background-color: rgb(223,  
199, 211) }
```

This example shows the color as background, it is applied via the CSS property "background".

To optimize and compress your CSS code, you can use our [online CSS compressor and optimizer](#) based on csstidy. If you want to create a linear or radial gradient as background or border, check our [CSS Gradient Generator](#).

Hey! You found this booklet interesting? Support Converting Colors with the new Membership Option!

The pro membership hides all ads, plus gives you double the colors in the color bucket, and more awesome pro features!

[Learn more, Memberships starting at \\$2.50/m!](#)

**Follow me
on Twitter!**

@ConvertingColor