

Converting Colors

Yxy(61.3812, 0.3336, 0.3238)

Have a look what the booklet for
Yxy(61.3812, 0.3336, 0.3238)
contains.

Yxy(61.3580, 0.3337, 0.3235)	3
Conversions	4
Details	6
Harmonies	12
Previews	24
Color Blindness Simulation	27
CSS Examples	30

Color

Yxy(61.3580, 0.3337, 0.3235)

Conversions

Conversions Part 1

Format	Color
Hex	E5C6CB
RGB	229, 198, 203
RGB Percent	90%, 78%, 80%
CMY	0.1019, 0.2235, 0.2038
CMYK	0.00, 0.14, 0.11, 0.10
HSL	350°, 37%, 84%
HSV	350°, 14%, 90%
XYZ	63.2926, 61.3580, 65.0186
YIQ	207.8390, 16.8710, 8.1270

Conversions

Conversions Part 2

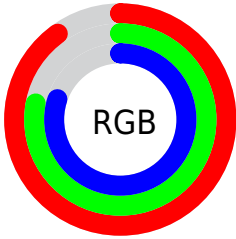
Format	Color
R _Y B	229, 198, 203
Decimal	15058635
CIE Lab	82.57, 11.75, 1.53
CIE LCh	83, 11.850, 7.425
Yxy	61.3580, 0.3337, 0.3235
Android (android.graphics.Color)	4293248715 (0xFFE5C6CB)
YUV	207.8390, -2.3856, 18.5582
Hunter-Lab	78.3313, 7.1502, 5.6185

Details

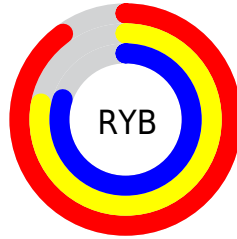
The Yxy color **61.3580, 0.3337, 0.3235** is a light color, and the websafe version is hex **FFCCCC**. A complement of this color would be **73.4360, 0.2951, 0.3346**, and the grayscale version is **62.9777, 0.3127, 0.3290**.

A 20% lighter version of the original color is **100.0000, 0.3127, 0.3290**, and **31.0007, 0.3387, 0.3218** is the 20% darker color. If you saturate the color by 10%, you get **50.8115, 0.3536, 0.3192**, and if you desaturate by 10%, it is **73.6061, 0.3176, 0.3276**.

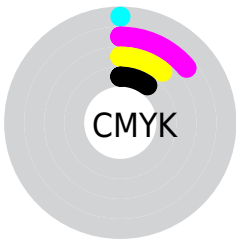
Distribution



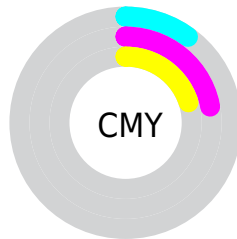
- Red (90%)
- Green (78%)
- Blue (80%)



- Red (90%)
- Yellow (78%)
- Blue (80%)



- Cyan (0%)
- Magenta (14%)
- Yellow (11%)
- Black (10%)





- Cyan (10%)
- Magenta (22%)
- Yellow (20%)

Brightness & Saturation Gradients


These gradients show how the Yxy color 61.3580, 0.3337, 0.3235 changes by changing the brightness by 10 percent. The first figure shows a shift by +10% for each color and the second figure -10%.

Similar to the brightness gradients but the following saturation gradients show a change of the Yxy color 61.3580, 0.3337, 0.3235 by changing the saturation by 10% instead.


 61.3580, 0.3337,
0.3235

 61.3580, 0.3337,
0.3235


429.5854, 0.3237,
0.3262

 44.5142, 0.3361,
0.3229


106.7971, 0.3301,
0.3245

 31.0749, 0.3391,
0.3220


136.1612, 0.3288,
0.3248

 20.6559, 0.3429,
0.3210


170.4674, 0.3276,
0.3251

 12.8727, 0.3481,
0.3195

210.1003, 0.3266,
0.3254

 7.3410, 0.3555,
0.3175

255.4441, 0.3257,
0.3256

 3.6762, 0.3666,
0.3143

306.8833, 0.3250,

 1.4942, 0.3856,

0.3258

0.3087

364.8023, 0.3243,
0.3260

0.2846, 0.5335,
0.2724

0.0000, 0.0000,
0.0000

61.3580, 0.3337,
0.3235

61.3580, 0.3337,
0.3235

50.8115, 0.3536,
0.3192

73.6061, 0.3176,
0.3276

41.8836, 0.3783,
0.3147

87.6180, 0.3047,
0.3314

34.4964, 0.4083,
0.3105

95.4011, 0.2970,
0.3290

28.5623, 0.4440,
0.3071

■ 23.9851, 0.4846,
0.3050

■ 20.6567, 0.5278,
0.3052

■ 18.4527, 0.5691,
0.3083

■ 17.2223, 0.6030,
0.3142

■ 16.7952, 0.6193,
0.3185

Harmonies

Analogous

The Analogous color harmony consists of three colors that are next to each other on the color wheel.



61.3580, 0.3201, 0.3121



61.3580, 0.3337, 0.3235



61.3580, 0.3416, 0.3366

Triad

The Triadic color harmony groups three colors that are evenly spaced from another and form a triangle on the color wheel.



61.3580, 0.3337, 0.3235



61.3580, 0.3201, 0.3545



61.3580, 0.2846, 0.3093

Complementary

The Complementary color scheme is a pair of colors which are on the opposite of each other on the color wheel.



61.3580, 0.3337, 0.3235



73.4360, 0.2951, 0.3346

Split Complementary

Split-complementary colors differ from the complementary color scheme. The scheme consists of three colors, the original color and two neighbors of the complement color.



61.3580, 0.2847, 0.3203



61.3580, 0.3337, 0.3235



61.3580, 0.3049, 0.3469

Square

The Square scheme is like the rectangle color scheme, but the four colors are evenly spaced on the color wheel.



61.3580, 0.3337, 0.3235



61.3580, 0.3336, 0.3548



61.3580, 0.2920, 0.3342



61.3580, 0.2919, 0.3038

Rectangle

The Rectangle color scheme consists of four colors that form a rectangle on the color wheel.



61.3580, 0.3337, 0.3235



61.3580, 0.3425, 0.3446



61.3580, 0.2920, 0.3342



61.3580, 0.2838, 0.3124

Sweetspot

The Sweet Spot groups the original color and five complimentary colors.



61.3607, 0.3337, 0.3235



93.1254, 0.3183, 0.3274



61.8682, 0.3103, 0.2952



19.6647, 0.3194, 0.3271



0.0000, 0.0000, 0.0000



21.4041, 0.3127, 0.3290

Same Dimension

The Same Dimension uses a secret algorithm to generate beautiful new colors.



61.3607, 0.3337, 0.3235



74.6645, 0.3384, 0.3224



66.0148, 0.3360, 0.3405



14.4059, 0.3267, 0.3252



9.6124, 0.6163, 0.3169



0.7219, 0.5794, 0.2965

Inverse Universe

The Inverse Universe completely reimagines the original color for something new.



61.3607, 0.3337, 0.3235



74.6645, 0.3384, 0.3224



68.1589, 0.2918, 0.3173



14.4059, 0.3267, 0.3252



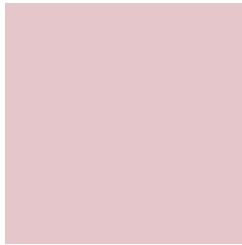
9.6124, 0.6163, 0.3169



0.7219, 0.5794, 0.2965

Previews

White Background



This preview shows how the Yxy color 61.3580, 0.3337, 0.3235 looks on a white background.

Color Contrast Check

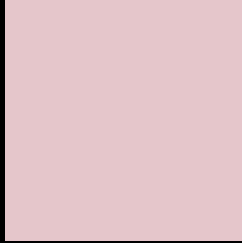
Large Text (above 18pt) WCAG AA × Fail

Any Text WCAG AA × Fail

Large Text (above 18pt) WCAG AAA × Fail

Any Text WCAG AAA × Fail

Black Background



This preview shows how the Yxy color 61.3580, 0.3337, 0.3235 looks on a black background.

Color Contrast Check

Large Text (above 18pt) WCAG AA ✓ Pass

Any Text WCAG AA ✓ Pass

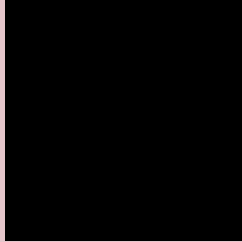
Large Text (above 18pt) WCAG AAA ✓ Pass

Any Text WCAG AAA ✓ Pass

If you want to check with other color combinations, try the [Color Contrast Checker](#).

Yxy 61.3580, 0.3337, 0.3235

Background



This preview shows how black text looks on a background with the Yxy color 61.3580, 0.3337, 0.3235.



This preview shows how white text looks on a background with the Yxy color 61.3580, 0.3337, 0.3235.

Color Blindness Simulation

Color vision deficiency is a very complex topic, and I could not describe the different causes any better than Wikipedia does, so if you want to learn more, you should check out their [article about color blindness](#).

Dichromacy



Original Color

61.3580, 0.3337, 0.3235

Protanopia

61.7229, 0.3143, 0.3267

Deuteranopia

61.3274, 0.3312, 0.3246



Tritanopia

61.5090, 0.3277, 0.3126

Trichromacy



Original Color

61.3580, 0.3337, 0.3235

Protanomaly

61.2962, 0.3207, 0.3245

Deuteranomaly

61.4895, 0.3320, 0.3246

Tritanomaly

61.3589, 0.3300, 0.3159

Monochromacy



Original Color

61.3580, 0.3337, 0.3235

Achromatopsia

63.0757, 0.3127, 0.3290

Achromatomaly

62.2409, 0.3205, 0.3268

CSS Examples

Text

The CSS property to change the color of the text to Yxy 61.3580, 0.3337, 0.3235 is called "color". The color property can be set on classes, ids or directly on the HTML element.

This example shows how text in the color `rgb(229, 198, 203)` looks like.

```
.text, #text, p{  
    color:rgb(229, 198, 203)  
}
```

If you want to add a text shadow in that color use the text-shadow property, you can generate a text shadow directly with our [CSS Text Shadow Generator](#).

Here you see how black text with a 4 pixel rgb(229, 198, 203) colored shadow looks like.

```
.shadow{ text-shadow: 4px 4px 2px rgb(229, 198, 203) }
```

Border

The CSS property to change the border of an element to Yxy 61.3580, 0.3337, 0.3235 is called "border". The border property can be set on classes, ids or directly on the HTML element.

This example shows the color as border, it can be applied via the CSS property "border" or "border-color".

```
.border, #border, table{ border:4px solid rgb(229, 198, 203) }
```

If only the border color should be changed use the property `border-color`.

```
.border{ border-color:rgb(229, 198, 203) }
```

If you want to add a box shadow in that color use:

Here you see how a box with a 4 pixel `rgb(229, 198, 203)` colored shadow looks like.

```
.boxshadow{ -moz-box-shadow:4px 4px 4px  
4px rgb(229, 198, 203); -webkit-box-  
shadow:4px 4px 4px 4px rgb(229, 198, 203);  
box-shadow:4px 4px 4px 4px rgb(229, 198,  
203) }
```


Background

The CSS property to change the background color of an element to Yxy 61.3580, 0.3337, 0.3235 is called "background". The background property can be set on classes, ids or directly on the HTML element.

```
.background, #background, body{  
background: rgb(229, 198, 203) }
```

If only the background color should be changed can be used:

```
.background{ background-color: rgb(229,  
198, 203) }
```

This example shows the color as background, it is applied via the CSS property "background".

To optimize and compress your CSS code, you can use our [online CSS compressor and optimizer](#) based on csstidy. If you want to create a linear or radial gradient as background or border, check our [CSS Gradient Generator](#).

Hey! You found this booklet interesting? Support Converting Colors with the new Membership Option!

The pro membership hides all ads, plus gives you double the colors in the color bucket, and more awesome pro features!

[Learn more, Memberships starting at \\$2.50/m!](#)

**Follow me
on Twitter!**

@ConvertingColor