

Converting Colors

Yxy(61.3870, 0.3323, 0.3269)

Have a look what the booklet for
Yxy(61.3870, 0.3323, 0.3269)
contains.

Yxy(61.2326, 0.3327, 0.3268)	3
Conversions	4
Details	6
Harmonies	12
Previews	24
Color Blindness Simulation	27
CSS Examples	30

Color

Yxy(61.2326, 0.3327, 0.3268)

Conversions

Conversions Part 1

Format	Color
Hex	E2C7C9
RGB	226, 199, 201
RGB Percent	89%, 78%, 79%
CMY	0.1136, 0.2196, 0.2117
CMYK	0.00, 0.12, 0.11, 0.11
HSL	356°, 32%, 83%
HSV	356°, 12%, 89%
XYZ	62.3381, 61.2326, 63.7996
YIQ	207.3010, 15.4500, 6.3460

Conversions

Conversions Part 2

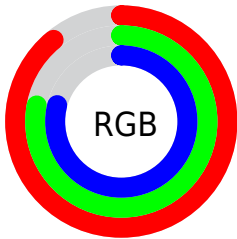
Format	Color
R _Y B	226, 199, 201
Decimal	14862281
CIE Lab	82.50, 9.83, 2.47
CIE LCh	83, 10.141, 14.126
Yxy	61.2326, 0.3327, 0.3268
Android (android.graphics.Color)	4293052361 (0xFFE2C7C9)
YUV	207.3010, -3.1064, 16.3990
Hunter-Lab	78.2513, 5.2605, 6.4357

Details

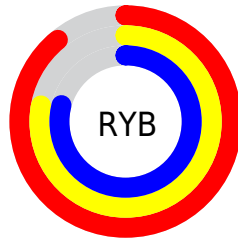
The Yxy color **61.2326, 0.3327, 0.3268** is a light color, and the websafe version is hex **FFCCCC**. A complement of this color would be **71.9329, 0.2957, 0.3312**, and the grayscale version is **62.6178, 0.3127, 0.3290**.

A 20% lighter version of the original color is **100.0000, 0.3127, 0.3290**, and **30.9034, 0.3374, 0.3261** is the 20% darker color. If you saturate the color by 10%, you get **50.6771, 0.3540, 0.3248**, and if you desaturate by 10%, it is **73.4723, 0.3156, 0.3287**.

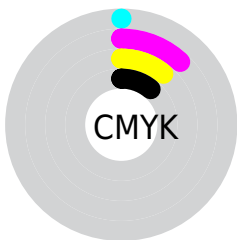
Distribution



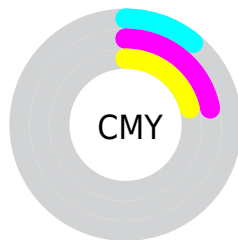
- Red (89%)
- Green (78%)
- Blue (79%)



- Red (89%)
- Yellow (78%)
- Blue (79%)



- Cyan (0%)
- Magenta (12%)
- Yellow (11%)
- Black (11%)





- Cyan (11%)
- Magenta (22%)
- Yellow (21%)

Brightness & Saturation Gradients


These gradients show how the Yxy color 61.2326, 0.3327, 0.3268 changes by changing the brightness by 10 percent. The first figure shows a shift by +10% for each color and the second figure -10%.

Similar to the brightness gradients but the following saturation gradients show a change of the Yxy color 61.2326, 0.3327, 0.3268 by changing the saturation by 10% instead.


 61.2326, 0.3327,
0.3268

 61.2326, 0.3327,
0.3268


429.1263, 0.3231,
0.3279

 44.4129, 0.3350,
0.3265


106.6157, 0.3293,
0.3272

 30.9953, 0.3378,
0.3262


135.9478, 0.3280,
0.3274

 20.5952, 0.3415,
0.3257


170.2196, 0.3269,
0.3275

 12.8285, 0.3465,
0.3250

209.8153, 0.3259,
0.3276

 7.3105, 0.3535,
0.3240

255.1195, 0.3251,
0.3277

 3.6571, 0.3643,
0.3225

306.5165, 0.3244,

 1.4836, 0.3826,

0.3278

0.3195

364.3906, 0.3237,
0.3279

0.2772, 0.5536,
0.3048

0.0000, 0.0000,
0.0000

61.2326, 0.3327,
0.3268

61.2326, 0.3327,
0.3268

50.6771, 0.3540,
0.3248

73.4723, 0.3156,
0.3287

41.7245, 0.3804,
0.3228

87.4569, 0.3020,
0.3304

34.2987, 0.4129,
0.3210

94.9137, 0.2952,
0.3289

28.3147, 0.4516,
0.3194

■ 23.6785, 0.4956,
0.3186

■ 20.2857, 0.5419,
0.3190

■ 18.0160, 0.5847,
0.3208

■ 16.7256, 0.6173,
0.3239

■ 16.2138, 0.6335,
0.3263

Harmonies

Analogous

The Analogous color harmony consists of three colors that are next to each other on the color wheel.



61.2326, 0.3219, 0.3164



61.2326, 0.3327, 0.3268



61.2326, 0.3380, 0.3380

Triad

The Triadic color harmony groups three colors that are evenly spaced from another and form a triangle on the color wheel.



61.2326, 0.3327, 0.3268



61.2326, 0.3162, 0.3498



61.2326, 0.2895, 0.3106

Complementary

The Complementary color scheme is a pair of colors which are on the opposite of each other on the color wheel.



61.2326, 0.3327, 0.3268



71.9329, 0.2957, 0.3312

Split Complementary

Split-complementary colors differ from the complementary color scheme. The scheme consists of three colors, the original color and two neighbors of the complement color.



61.2326, 0.2881, 0.3192



61.2326, 0.3327, 0.3268



61.2326, 0.3033, 0.3421

Square

The Square scheme is like the rectangle color scheme, but the four colors are evenly spaced on the color wheel.



61.2326, 0.3327, 0.3268



61.2326, 0.3283, 0.3516



61.2326, 0.2931, 0.3308



61.2326, 0.2970, 0.3071

Rectangle

The Rectangle color scheme consists of four colors that form a rectangle on the color wheel.



61.2326, 0.3327, 0.3268



61.2326, 0.3377, 0.3445



61.2326, 0.2931, 0.3308



61.2326, 0.2883, 0.3130

Sweetspot

The Sweet Spot groups the original color and five complimentary colors.



61.2353, 0.3327, 0.3268



93.0708, 0.3189, 0.3283



62.1483, 0.3124, 0.2995



19.6509, 0.3201, 0.3281



0.0000, 0.0000, 0.0000



21.4041, 0.3127, 0.3290

Same Dimension

The Same Dimension uses a secret algorithm to generate beautiful new colors.



61.2353, 0.3327, 0.3268



77.3519, 0.3369, 0.3264



66.5181, 0.3327, 0.3415



13.7171, 0.3280, 0.3273



9.2537, 0.6316, 0.3253



0.6473, 0.6088, 0.3127

Inverse Universe

The Inverse Universe completely reimagines the original color for something new.



61.2353, 0.3327, 0.3268



77.3519, 0.3369, 0.3264



66.1152, 0.2942, 0.3161



13.7171, 0.3280, 0.3273



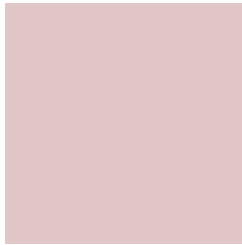
9.2537, 0.6316, 0.3253



0.6473, 0.6088, 0.3127

Previews

White Background



This preview shows how the Yxy color 61.2326, 0.3327, 0.3268 looks on a white background.

Color Contrast Check

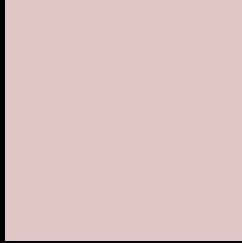
Large Text (above 18pt) WCAG AA × Fail

Any Text WCAG AA × Fail

Large Text (above 18pt) WCAG AAA × Fail

Any Text WCAG AAA × Fail

Black Background



This preview shows how the Yxy color 61.2326, 0.3327, 0.3268 looks on a black background.

Color Contrast Check

Large Text (above 18pt) WCAG AA ✓ Pass

Any Text WCAG AA ✓ Pass

Large Text (above 18pt) WCAG AAA ✓ Pass

Any Text WCAG AAA ✓ Pass

If you want to check with other color combinations, try the [Color Contrast Checker](#).

Yxy 61.2326, 0.3327, 0.3268

Background



This preview shows how black text looks on a background with the Yxy color 61.2326, 0.3327, 0.3268.



This preview shows how white text looks on a background with the Yxy color 61.2326, 0.3327, 0.3268.

Color Blindness Simulation

Color vision deficiency is a very complex topic, and I could not describe the different causes any better than Wikipedia does, so if you want to learn more, you should check out their [article about color blindness](#).

Dichromacy



Original Color

61.2326, 0.3327, 0.3268

Protanopia

61.1007, 0.3166, 0.3290

Deuteranopia

61.3948, 0.3335, 0.3268



Tritanopia

61.2306, 0.3254, 0.3114

Trichromacy



Original Color

61.2326, 0.3327, 0.3268

Protanomaly

60.9999, 0.3221, 0.3279

Deuteranomaly

61.3948, 0.3335, 0.3268

Tritanomaly

61.3225, 0.3275, 0.3169

Monochromacy



Original Color

61.2326, 0.3327, 0.3268

Achromatopsia

62.3960, 0.3127, 0.3290

Achromatomaly

61.8897, 0.3197, 0.3279

CSS Examples

Text

The CSS property to change the color of the text to Yxy 61.2326, 0.3327, 0.3268 is called "color". The color property can be set on classes, ids or directly on the HTML element.

This example shows how text in the color `rgb(226, 199, 201)` looks like.

```
.text, #text, p{  
    color:rgb(226, 199, 201)  
}
```

If you want to add a text shadow in that color use the text-shadow property, you can generate a text shadow directly with our [CSS Text Shadow Generator](#).

Here you see how black text with a 4 pixel rgb(226, 199, 201) colored shadow looks like.

```
.shadow{ text-shadow: 4px 4px 2px rgb(226, 199, 201) }
```

Border

The CSS property to change the border of an element to Yxy 61.2326, 0.3327, 0.3268 is called "border". The border property can be set on classes, ids or directly on the HTML element.

This example shows the color as border, it can be applied via the CSS property "border" or "border-color".

```
.border, #border, table{ border:4px solid rgb(226, 199, 201) }
```

If only the border color should be changed use the property border-color.

```
.border{ border-color:rgb(226, 199, 201) }
```

If you want to add a box shadow in that color use:

Here you see how a box with a 4 pixel rgb(226, 199, 201) colored shadow looks like.

```
.boxshadow{ -moz-box-shadow:4px 4px 4px  
4px rgb(226, 199, 201); -webkit-box-  
shadow:4px 4px 4px 4px rgb(226, 199, 201);  
box-shadow:4px 4px 4px 4px rgb(226, 199,  
201) }
```


Background

The CSS property to change the background color of an element to Yxy 61.2326, 0.3327, 0.3268 is called "background". The background property can be set on classes, ids or directly on the HTML element.

```
.background, #background, body{  
background: rgb(226, 199, 201) }
```

If only the background color should be changed can be used:

```
.background{ background-color: rgb(226,  
199, 201) }
```

This example shows the color as background, it is applied via the CSS property "background".

To optimize and compress your CSS code, you can use our [online CSS compressor and optimizer](#) based on csstidy. If you want to create a linear or radial gradient as background or border, check our [CSS Gradient Generator](#).

Hey! You found this booklet interesting? Support Converting Colors with the new Membership Option!

The pro membership hides all ads, plus gives you double the colors in the color bucket, and more awesome pro features!

[Learn more, Memberships starting at \\$2.50/m!](#)

**Follow me
on Twitter!**

@ConvertingColor