

Converting Colors

Yxy(61.4184, 0.3252, 0.3299)

Have a look what the booklet for
Yxy(61.4184, 0.3252, 0.3299)
contains.

Yxy(61.3635, 0.3259, 0.3302)	3
Conversions	4
Details	6
Harmonies	12
Previews	24
Color Blindness Simulation	27
CSS Examples	30

Color

Yxy(61.3635, 0.3259, 0.3302)

Conversions

Conversions Part 1

Format	Color
Hex	DACAC9
RGB	218, 202, 201
RGB Percent	85%, 79%, 79%
CMY	0.1453, 0.2078, 0.2118
CMYK	0.00, 0.07, 0.08, 0.15
HSL	4°, 19%, 82%
HSV	4°, 8%, 85%
XYZ	60.5644, 61.3635, 63.9095
YIQ	206.6700, 9.8570, 3.0810

Conversions

Conversions Part 2

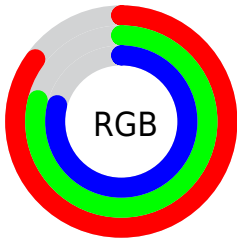
Format	Color
R _Y B	218, 202, 201
Decimal	14338761
CIE Lab	82.57, 5.37, 2.50
CIE LCh	83, 5.925, 24.954
Yxy	61.3635, 0.3259, 0.3302
Android (android.graphics.Color)	4292528841 (0xFFDACAC9)
YUV	206.6700, -2.7953, 9.9364
Hunter-Lab	78.3349, 0.9208, 6.4627

Details

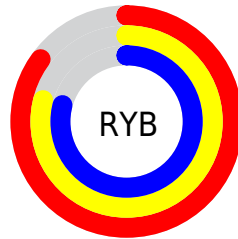
The Yxy color **61.3635, 0.3259, 0.3302** is a light color, and the websafe version is hex **CCCCCC**. A complement of this color would be **67.0629, 0.3007, 0.3278**, and the grayscale version is **62.1847, 0.3127, 0.3290**.

A 20% lighter version of the original color is **100.0000, 0.3127, 0.3290**, and **31.0729, 0.3294, 0.3306** is the 20% darker color. If you saturate the color by 10%, you get **51.4299, 0.3464, 0.3319**, and if you desaturate by 10%, it is **72.7233, 0.3093, 0.3287**.

Distribution



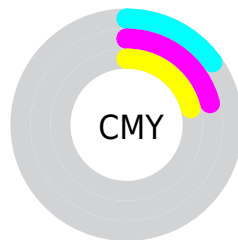
- Red (85%)
- Green (79%)
- Blue (79%)



- Red (85%)
- Yellow (79%)
- Blue (79%)



- Cyan (0%)
- Magenta (7%)
- Yellow (8%)
- Black (15%)



- Cyan (15%)
- Magenta (21%)
- Yellow (21%)

Brightness & Saturation Gradients

These gradients show how the Yxy color 61.3635, 0.3259, 0.3302 changes by changing the brightness by 10 percent. The first figure shows a shift by +10% for each color and the second figure -10%.

Similar to the brightness gradients but the following saturation gradients show a change of the Yxy color 61.3635, 0.3259, 0.3302 by changing the saturation by 10% instead.

61.3635, 0.3259,
0.3302

61.3635, 0.3259,
0.3302

429.6055, 0.3196,
0.3297

44.5186, 0.3274,
0.3303

106.8051, 0.3237,
0.3300

31.0784, 0.3293,
0.3305

136.1705, 0.3228,
0.3299

20.6586, 0.3317,
0.3306

170.4783, 0.3221,
0.3299

12.8747, 0.3350,
0.3309

210.1128, 0.3214,
0.3298

7.3423, 0.3396,
0.3312

255.4583, 0.3209,
0.3298

3.6771, 0.3467,
0.3315

306.8994, 0.3204,

1.4946, 0.3587,

0.3297

0.3320

364.8203, 0.3200,
0.3297

0.2849, 0.4888,
0.3465

0.0000, 0.0000,
0.0000

61.3635, 0.3259,
0.3302

61.3635, 0.3259,
0.3302

51.4299, 0.3464,
0.3319

72.7233, 0.3093,
0.3287

42.8585, 0.3719,
0.3336

85.5540, 0.2959,
0.3273

35.5923, 0.4031,
0.3353

93.6373, 0.2905,
0.3289

29.5673, 0.4405,
0.3369

■ 24.7141, 0.4836,
0.3381

■ 20.9563, 0.5300,
0.3384

■ 18.2088, 0.5747,
0.3377

■ 16.3735, 0.6108,
0.3357

■ 15.3314, 0.6330,
0.3331

Harmonies

Analogous

The Analogous color harmony consists of three colors that are next to each other on the color wheel.



61.3635, 0.3206, 0.3237



61.3635, 0.3259, 0.3302



61.3635, 0.3276, 0.3365

Triad

The Triadic color harmony groups three colors that are evenly spaced from another and form a triangle on the color wheel.



61.3635, 0.3259, 0.3302



61.3635, 0.3120, 0.3398



61.3635, 0.3003, 0.3171

Complementary

The Complementary color scheme is a pair of colors which are on the opposite of each other on the color wheel.



61.3635, 0.3259, 0.3302



67.0629, 0.3007, 0.3278

Split Complementary

Split-complementary colors differ from the complementary color scheme. The scheme consists of three colors, the original color and two neighbors of the complement color.



61.3635, 0.2981, 0.3213



61.3635, 0.3259, 0.3302



61.3635, 0.3048, 0.3344

Square

The Square scheme is like the rectangle color scheme, but the four colors are evenly spaced on the color wheel.



61.3635, 0.3259, 0.3302



61.3635, 0.3195, 0.3422



61.3635, 0.2997, 0.3276



61.3635, 0.3059, 0.3162

Rectangle

The Rectangle color scheme consists of four colors that form a rectangle on the color wheel.



61.3635, 0.3259, 0.3302



61.3635, 0.3264, 0.3397



61.3635, 0.2997, 0.3276



61.3635, 0.2992, 0.3182

Sweetspot

The Sweet Spot groups the original color and five complimentary colors.



61.3662, 0.3259, 0.3302



96.6564, 0.3159, 0.3293



61.6853, 0.3142, 0.3110



20.7235, 0.3158, 0.3293



0.0000, 0.0000, 0.0000



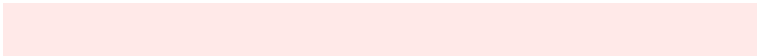
21.4041, 0.3127, 0.3290

Same Dimension

The Same Dimension uses a secret algorithm to generate beautiful new colors.



61.3662, 0.3259, 0.3302



85.6140, 0.3283, 0.3304



65.3660, 0.3250, 0.3395



13.1770, 0.3290, 0.3305



9.1573, 0.6354, 0.3337



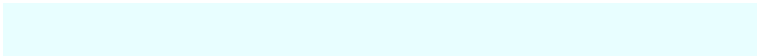
0.6387, 0.6217, 0.3446

Inverse Universe

The Inverse Universe completely reimagines the original color for something new.



67.0629, 0.3007, 0.3278



95.0230, 0.2988, 0.3276



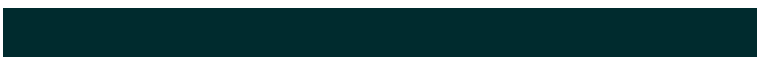
62.8942, 0.3008, 0.3182



14.6878, 0.2982, 0.3275



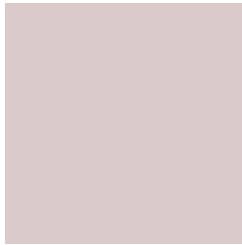
29.2015, 0.2195, 0.3101



1.9335, 0.2204, 0.3134

Previews

White Background



This preview shows how the Yxy color 61.3635, 0.3259, 0.3302 looks on a white background.

Color Contrast Check

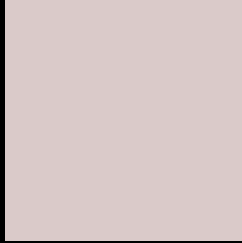
Large Text (above 18pt) WCAG AA × Fail

Any Text WCAG AA × Fail

Large Text (above 18pt) WCAG AAA × Fail

Any Text WCAG AAA × Fail

Black Background



This preview shows how the Yxy color 61.3635, 0.3259, 0.3302 looks on a black background.

Color Contrast Check

Large Text (above 18pt) WCAG AA ✓ Pass

Any Text WCAG AA ✓ Pass

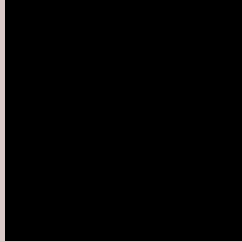
Large Text (above 18pt) WCAG AAA ✓ Pass

Any Text WCAG AAA ✓ Pass

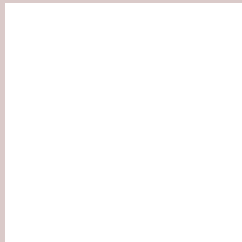
If you want to check with other color combinations, try the [Color Contrast Checker](#).

Yxy 61.3635, 0.3259, 0.3302

Background



This preview shows how black text looks on a background with the Yxy color 61.3635, 0.3259, 0.3302.



This preview shows how white text looks on a background with the Yxy color 61.3635, 0.3259, 0.3302.

Color Blindness Simulation

Color vision deficiency is a very complex topic, and I could not describe the different causes any better than Wikipedia does, so if you want to learn more, you should check out their [article about color blindness](#).

Dichromacy



Original Color

61.3635, 0.3259, 0.3302

Protanopia

61.6285, 0.3187, 0.3325

Deuteranopia

61.4420, 0.3327, 0.3257



Tritanopia

61.4305, 0.3174, 0.3123

Trichromacy



Original Color

61.3635, 0.3259, 0.3302

Protanomaly

61.5961, 0.3211, 0.3313

Deuteranomaly

61.4201, 0.3302, 0.3268

Tritanomaly

61.4865, 0.3202, 0.3189

Monochromacy



Original Color

61.3635, 0.3259, 0.3302

Achromatopsia

62.3960, 0.3127, 0.3290

Achromatomaly

61.9193, 0.3173, 0.3290

CSS Examples

Text

The CSS property to change the color of the text to Yxy 61.3635, 0.3259, 0.3302 is called "color". The color property can be set on classes, ids or directly on the HTML element.

This example shows how text in the color `rgb(218, 202, 201)` looks like.

```
.text, #text, p{  
    color:rgb(218, 202, 201)  
}
```

If you want to add a text shadow in that color use the text-shadow property, you can generate a text shadow directly with our [CSS Text Shadow Generator](#).

Here you see how black text with a 4 pixel rgb(218, 202, 201) colored shadow looks like.

```
.shadow{ text-shadow: 4px 4px 2px rgb(218, 202, 201) }
```

Border

The CSS property to change the border of an element to Yxy 61.3635, 0.3259, 0.3302 is called "border". The border property can be set on classes, ids or directly on the HTML element.

This example shows the color as border, it can be applied via the CSS property "border" or "border-color".

```
.border, #border, table{ border:4px solid rgb(218, 202, 201) }
```

If only the border color should be changed use the property `border-color`.

```
.border{ border-color:rgb(218, 202, 201) }
```

If you want to add a box shadow in that color use:

Here you see how a box with a 4 pixel `rgb(218, 202, 201)` colored shadow looks like.

```
.boxshadow{ -moz-box-shadow:4px 4px 4px  
4px rgb(218, 202, 201); -webkit-box-  
shadow:4px 4px 4px 4px rgb(218, 202, 201);  
box-shadow:4px 4px 4px 4px rgb(218, 202,  
201) }
```


Background

The CSS property to change the background color of an element to Yxy 61.3635, 0.3259, 0.3302 is called "background". The background property can be set on classes, ids or directly on the HTML element.

```
.background, #background, body{  
background: rgb(218, 202, 201) }
```

If only the background color should be changed can be used:

```
.background{ background-color: rgb(218,  
202, 201) }
```

This example shows the color as background, it is applied via the CSS property "background".

To optimize and compress your CSS code, you can use our [online CSS compressor and optimizer](#) based on csstidy. If you want to create a linear or radial gradient as background or border, check our [CSS Gradient Generator](#).

Hey! You found this booklet interesting? Support Converting Colors with the new Membership Option!

The pro membership hides all ads, plus gives you double the colors in the color bucket, and more awesome pro features!

[Learn more, Memberships starting at \\$2.50/m!](#)

**Follow me
on Twitter!**

@ConvertingColor