

Converting Colors

Yxy(61.4727, 0.3324, 0.3332)

Have a look what the booklet for
Yxy(61.4727, 0.3324, 0.3332)
contains.

Yxy(61.4925, 0.3330, 0.3336)	3
<i>Conversions</i>	4
<i>Details</i>	6
<i>Harmonies</i>	12
<i>Previews</i>	24
<i>Color Blindness Simulation</i>	27
<i>CSS Examples</i>	30

Color

Yxy(61.4925, 0.3330, 0.3336)

Conversions

Conversions Part 1

Format	Color
Hex	DFC9C5
RGB	223, 201, 197
RGB Percent	87%, 79%, 77%
CMY	0.1257, 0.2117, 0.2275
CMYK	0.00, 0.10, 0.12, 0.13
HSL	9°, 29%, 82%
HSV	9°, 12%, 87%
XYZ	61.3819, 61.4925, 61.4556
YIQ	207.1220, 14.3960, 3.4200

Conversions

Conversions Part 2

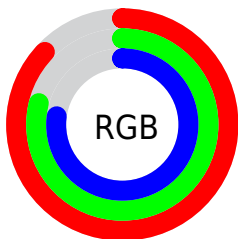
Format	Color
R _Y B	223, 202, 197
Decimal	14666181
CIE Lab	82.64, 7.00, 4.79
CIE LCh	83, 8.483, 34.377
Yxy	61.4925, 0.3330, 0.3336
Android (android.graphics.Color)	4292856261 (0xFFDFC9C5)
YUV	207.1220, -4.9901, 13.9250
Hunter-Lab	78.4172, 2.4928, 8.4264

Details

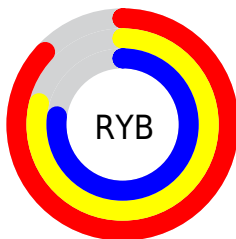
The Yxy color **61.4925, 0.3330, 0.3336** is a light color, and the websafe version is hex **CCCCCC**. A complement of this color would be **67.8117, 0.2949, 0.3244**, and the grayscale version is **62.5028, 0.3127, 0.3290**.

A 20% lighter version of the original color is **99.9358, 0.3133, 0.3300**, and **31.1754, 0.3389, 0.3350** is the 20% darker color. If you saturate the color by 10%, you get **52.2974, 0.3546, 0.3379**, and if you desaturate by 10%, it is **71.9207, 0.3153, 0.3296**.

Distribution



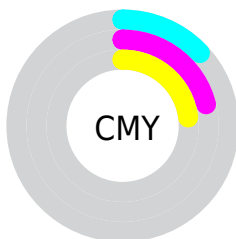
- Red (87%)
- Green (79%)
- Blue (77%)



- Red (87%)
- Yellow (79%)
- Blue (77%)



- Cyan (0%)
- Magenta (10%)
- Yellow (12%)
- Black (13%)




- Cyan (13%)
- Magenta (21%)
- Yellow (23%)

Brightness & Saturation Gradients

These gradients show how the Yxy color 61.4925, 0.3330, 0.3336 changes by changing the brightness by 10 percent. The first figure shows a shift by +10% for each color and the second figure -10%.

Similar to the brightness gradients but the following saturation gradients show a change of the Yxy color 61.4925, 0.3330, 0.3336 by changing the saturation by 10% instead.


 61.4925, 0.3330,
0.3336

 61.4925, 0.3330,
0.3336


430.0775, 0.3233,
0.3315

 44.6228, 0.3353,
0.3341


106.9917, 0.3296,
0.3329

 31.1604, 0.3382,
0.3347


136.3900, 0.3282,
0.3326

 20.7210, 0.3420,
0.3354


170.7332, 0.3271,
0.3323

 12.9202, 0.3470,
0.3364

210.4058, 0.3261,
0.3321

 7.3736, 0.3542,
0.3377

255.7921, 0.3253,
0.3319

 3.6968, 0.3651,
0.3395

307.2765, 0.3245,

 1.5055, 0.3837,

0.3318

0.3421

365.2435, 0.3239,
0.3316

0.2926, 0.6055,
0.3945

0.0000, 0.0000,
0.0000

61.4925, 0.3330,
0.3336

61.4925, 0.3330,
0.3336

52.2974, 0.3546,
0.3379

71.9207, 0.3153,
0.3296

44.2819, 0.3808,
0.3422

83.6168, 0.3008,
0.3260

37.4005, 0.4123,
0.3465

94.4184, 0.2934,
0.3289

31.6017, 0.4492,
0.3502

■ 26.8299, 0.4906,
0.3527

■ 23.0247, 0.5340,
0.3532

■ 20.1190, 0.5750,
0.3511

■ 18.0370, 0.6078,
0.3460

■ 16.8580, 0.6266,
0.3407

Harmonies

Analogous

The Analogous color harmony consists of three colors that are next to each other on the color wheel.



61.4925, 0.3269, 0.3242



61.4925, 0.3330, 0.3336



61.4925, 0.3336, 0.3420

Triad

The Triadic color harmony groups three colors that are evenly spaced from another and form a triangle on the color wheel.



61.4925, 0.3330, 0.3336



61.4925, 0.3083, 0.3425



61.4925, 0.2971, 0.3111

Complementary

The Complementary color scheme is a pair of colors which are on the opposite of each other on the color wheel.



61.4925, 0.3330, 0.3336



67.8117, 0.2949, 0.3244

Split Complementary

Split-complementary colors differ from the complementary color scheme. The scheme consists of three colors, the original color and two neighbors of the complement color.



61.4925, 0.2923, 0.3156



61.4925, 0.3330, 0.3336



61.4925, 0.2987, 0.3338

Square

The Square scheme is like the rectangle color scheme, but the four colors are evenly spaced on the color wheel.



61.4925, 0.3330, 0.3336



61.4925, 0.3192, 0.3474



61.4925, 0.2929, 0.3239



61.4925, 0.3060, 0.3113

Rectangle

The Rectangle color scheme consists of four colors that form a rectangle on the color wheel.



61.4925, 0.3330, 0.3336



61.4925, 0.3307, 0.3459



61.4925, 0.2929, 0.3239



61.4925, 0.2949, 0.3121

Sweetspot

The Sweet Spot groups the original color and five complimentary colors.



61.4952, 0.3330, 0.3336



95.4630, 0.3175, 0.3302



60.7273, 0.3169, 0.3046



20.1792, 0.3189, 0.3305



0.0000, 0.0000, 0.0000



21.4041, 0.3127, 0.3290

Same Dimension

The Same Dimension uses a secret algorithm to generate beautiful new colors.



61.4952, 0.3330, 0.3336



80.1560, 0.3379, 0.3346



67.7321, 0.3312, 0.3478



14.0424, 0.3288, 0.3327



10.0229, 0.6246, 0.3422



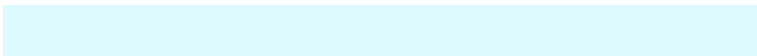
0.8027, 0.5982, 0.3632

Inverse Universe

The Inverse Universe completely reimagines the original color for something new.



67.8117, 0.2949, 0.3244



90.3607, 0.2911, 0.3233



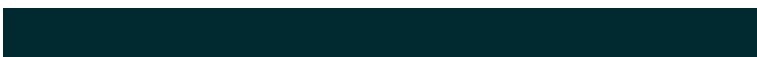
61.3748, 0.2946, 0.3094



15.1908, 0.2982, 0.3253



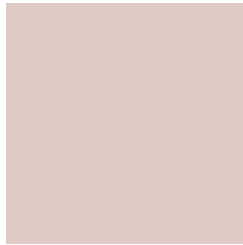
24.5106, 0.2109, 0.2791



1.7980, 0.2132, 0.2875

Previews

White Background



This preview shows how the Yxy color 61.4925, 0.3330, 0.3336 looks on a white background.

Color Contrast Check

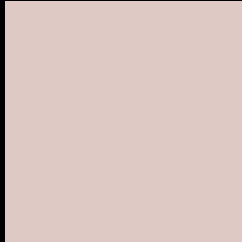
Large Text (above 18pt) WCAG AA × Fail

Any Text WCAG AA × Fail

Large Text (above 18pt) WCAG AAA × Fail

Any Text WCAG AAA × Fail

Black Background



This preview shows how the Yxy color 61.4925, 0.3330, 0.3336 looks on a black background.

Color Contrast Check

Large Text (above 18pt) WCAG AA ✓ Pass

Any Text WCAG AA ✓ Pass

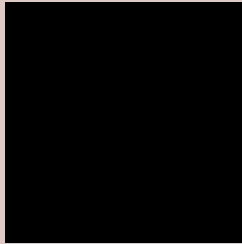
Large Text (above 18pt) WCAG AAA ✓ Pass

Any Text WCAG AAA ✓ Pass

If you want to check with other color combinations, try the [Color Contrast Checker](#).

Yxy 61.4925, 0.3330, 0.3336

Background



This preview shows how black text looks on a background with the Yxy color 61.4925, 0.3330, 0.3336.

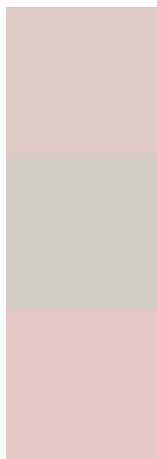


This preview shows how white text looks on a background with the Yxy color 61.4925, 0.3330, 0.3336.

Color Blindness Simulation

Color vision deficiency is a very complex topic, and I could not describe the different causes any better than Wikipedia does, so if you want to learn more, you should check out their [article about color blindness](#).

Dichromacy



Original Color

61.4925, 0.3330, 0.3336

Protanopia

61.6350, 0.3216, 0.3360

Deuteranopia

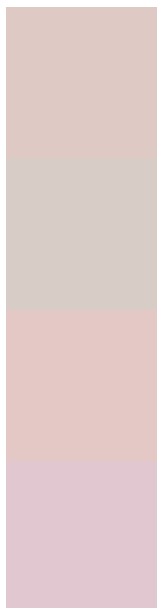
61.5361, 0.3382, 0.3313



Tritanopia

61.2508, 0.3222, 0.3113

Trichromacy



Original Color

61.4925, 0.3330, 0.3336

Protanomaly

61.7100, 0.3256, 0.3359

Deuteranomaly

61.6707, 0.3364, 0.3324

Tritanomaly

61.2482, 0.3258, 0.3190

Monochromacy



Original Color

61.4925, 0.3330, 0.3336

Achromatopsia

62.3960, 0.3127, 0.3290

Achromatomaly

62.1206, 0.3203, 0.3313

CSS Examples

Text

The CSS property to change the color of the text to Yxy 61.4925, 0.3330, 0.3336 is called "color". The color property can be set on classes, ids or directly on the HTML element.

This example shows how text in the color `rgb(223, 201, 197)` looks like.

```
.text, #text, p{  
    color:rgb(223, 201, 197)  
}
```

If you want to add a text shadow in that color use the text-shadow property, you can generate a text shadow directly with our [CSS Text Shadow Generator](#).

Here you see how black text with a 4 pixel rgb(223, 201, 197) colored shadow looks like.

```
.shadow{ text-shadow: 4px 4px 2px rgb(223, 201, 197) }
```

Border

The CSS property to change the border of an element to Yxy 61.4925, 0.3330, 0.3336 is called "border". The border property can be set on classes, ids or directly on the HTML element.

This example shows the color as border, it can be applied via the CSS property "border" or "border-color".

```
.border, #border, table{ border:4px solid rgb(223, 201, 197) }
```

If only the border color should be changed use the property border-color.

```
.border{ border-color:rgb(223, 201, 197) }
```

If you want to add a box shadow in that color use:

Here you see how a box with a 4 pixel rgb(223, 201, 197) colored shadow looks like.

```
.boxshadow{ -moz-box-shadow:4px 4px 4px  
4px rgb(223, 201, 197); -webkit-box-  
shadow:4px 4px 4px 4px rgb(223, 201, 197);  
box-shadow:4px 4px 4px 4px rgb(223, 201,  
197) }
```


Background

The CSS property to change the background color of an element to Yxy 61.4925, 0.3330, 0.3336 is called "background". The background property can be set on classes, ids or directly on the HTML element.

```
.background, #background, body{  
background: rgb(223, 201, 197) }
```

If only the background color should be changed can be used:

```
.background{ background-color: rgb(223,  
201, 197) }
```

This example shows the color as background, it is applied via the CSS property "background".

To optimize and compress your CSS code, you can use our [online CSS compressor and optimizer](#) based on csstidy. If you want to create a linear or radial gradient as background or border, check our [CSS Gradient Generator](#).

Hey! You found this booklet interesting? Support Converting Colors with the new Membership Option!

The pro membership hides all ads, plus gives you double the colors in the color bucket, and more awesome pro features!

[Learn more, Memberships starting at \\$2.50/m!](#)

**Follow me
on Twitter!**

@ConvertingColor