

Converting Colors

Yxy(61.4943, 0.3432, 0.3476)

Have a look what the booklet for
Yxy(61.4943, 0.3432, 0.3476)
contains.

Yxy(61.7514, 0.3437, 0.3483)	3
Conversions	4
Details	6
Harmonies	12
Previews	24
Color Blindness Simulation	27
CSS Examples	30

Color

Yxy(61.7514, 0.3437, 0.3483)

Conversions

Conversions Part 1

Format	Color
Hex	E1CAB9
RGB	225, 202, 185
RGB Percent	88%, 79%, 73%
CMY	0.1175, 0.2079, 0.2745
CMYK	0.00, 0.10, 0.18, 0.12
HSL	25°, 40%, 80%
HSV	25°, 18%, 88%
XYZ	60.9358, 61.7514, 54.6065
YIQ	206.9390, 19.1650, -0.4110

Conversions

Conversions Part 2

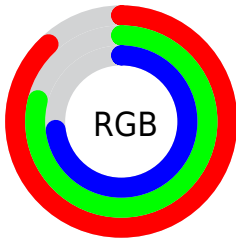
Format	Color
R _Y B	225, 215, 185
Decimal	14797497
CIE Lab	82.78, 5.36, 11.41
CIE LCh	83, 12.606, 64.857
Yxy	61.7514, 0.3437, 0.3483
Android (android.graphics.Color)	4292987577 (0xFFE1CAB9)
YUV	206.9390, -10.8159, 15.8395
Hunter-Lab	78.5821, 0.8978, 13.8070

Details

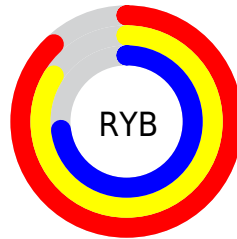
The Yxy color **61.7514, 0.3437, 0.3483** is a light color, and the websafe version is hex **CCCCCC**. A complement of this color would be **60.8824, 0.2850, 0.3089**, and the grayscale version is **62.4208, 0.3127, 0.3290**.

A 20% lighter version of the original color is **99.1309, 0.3209, 0.3425**, and **31.2808, 0.3511, 0.3530** is the 20% darker color. If you saturate the color by 10%, you get **55.0536, 0.3650, 0.3599**, and if you desaturate by 10%, it is **69.1152, 0.3253, 0.3372**.

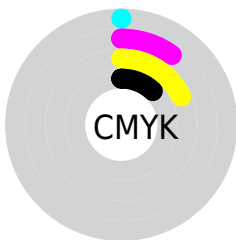
Distribution



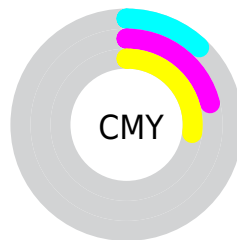
- Red (88%)
- Green (79%)
- Blue (73%)



- Red (88%)
- Yellow (84%)
- Blue (73%)



- Cyan (0%)
- Magenta (10%)
- Yellow (18%)
- Black (12%)





- Cyan (12%)
- Magenta (21%)
- Yellow (27%)

Brightness & Saturation Gradients


These gradients show how the Yxy color 61.7514, 0.3437, 0.3483 changes by changing the brightness by 10 percent. The first figure shows a shift by +10% for each color and the second figure -10%.

Similar to the brightness gradients but the following saturation gradients show a change of the Yxy color 61.7514, 0.3437, 0.3483 by changing the saturation by 10% instead.


 61.7514, 0.3437,
0.3483

 61.7514, 0.3437,
0.3483


431.0237, 0.3289,
0.3393

 44.8319, 0.3472,
0.3504


 107.3662, 0.3384,
0.3451

 31.3250, 0.3516,
0.3530


136.8302, 0.3364,
0.3439

 20.8465, 0.3573,
0.3563


171.2444, 0.3347,
0.3429

 13.0118, 0.3650,
0.3606

210.9934, 0.3332,
0.3420

 7.4367, 0.3757,
0.3666

256.4614, 0.3319,
0.3412

 3.7367, 0.3919,
0.3751

308.0328, 0.3308,

 1.5274, 0.4206,

0.3404

0.3898

366.0921, 0.3298,
0.3398

0.3079, 0.5790,
0.4210

0.0000, 0.0000,
0.0000

61.7514, 0.3437,
0.3483

61.7514, 0.3437,
0.3483

55.0536, 0.3650,
0.3599

69.1152, 0.3253,
0.3372

48.9939, 0.3892,
0.3715

77.1552, 0.3094,
0.3268

43.5546, 0.4165,
0.3825

85.8920, 0.2958,
0.3171

38.7137, 0.4462,
0.3920

93.9860, 0.2946,
0.3277

■ 34.4480, 0.4774,
0.3989

■ 94.7525, 0.2946,
0.3289

■ 30.7322, 0.5082,
0.4017

■ 27.5384, 0.5364,
0.3994

■ 24.8331, 0.5599,
0.3917

■ 24.2931, 0.5648,
0.3898

Harmonies

Analogous

The Analogous color harmony consists of three colors that are next to each other on the color wheel.



61.7514, 0.3430, 0.3358



61.7514, 0.3437, 0.3483



61.7514, 0.3359, 0.3561

Triad

The Triadic color harmony groups three colors that are evenly spaced from another and form a triangle on the color wheel.



61.7514, 0.3437, 0.3483



61.7514, 0.2917, 0.3358



61.7514, 0.3030, 0.3031

Complementary

The Complementary color scheme is a pair of colors which are on the opposite of each other on the color wheel.



61.7514, 0.3437, 0.3483



60.8824, 0.2850, 0.3089

Split Complementary

Split-complementary colors differ from the complementary color scheme. The scheme consists of three colors, the original color and two neighbors of the complement color.



61.7514, 0.2897, 0.3025



61.7514, 0.3437, 0.3483



61.7514, 0.2833, 0.3209

Square

The Square scheme is like the rectangle color scheme, but the four colors are evenly spaced on the color wheel.



61.7514, 0.3437, 0.3483



61.7514, 0.3057, 0.3490



61.7514, 0.2826, 0.3089



61.7514, 0.3192, 0.3102

Rectangle

The Rectangle color scheme consists of four colors that form a rectangle on the color wheel.



61.7514, 0.3437, 0.3483



61.7514, 0.3270, 0.3572



61.7514, 0.2826, 0.3089



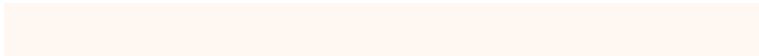
61.7514, 0.2980, 0.3021

Sweetspot

The Sweet Spot groups the original color and five complimentary colors.



61.7542, 0.3437, 0.3483



94.6134, 0.3207, 0.3343



55.2825, 0.3278, 0.3029



20.0931, 0.3218, 0.3350



0.0000, 0.0000, 0.0000



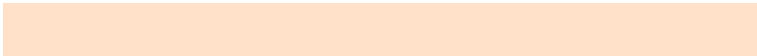
21.4041, 0.3127, 0.3290

Same Dimension

The Same Dimension uses a secret algorithm to generate beautiful new colors.



61.7542, 0.3437, 0.3483



78.9082, 0.3505, 0.3521



71.5962, 0.3400, 0.3696



14.6523, 0.3281, 0.3390



14.2152, 0.5621, 0.3919



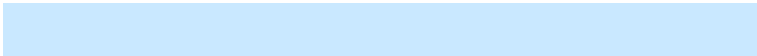
1.1600, 0.5349, 0.4135

Inverse Universe

The Inverse Universe completely reimagines the original color for something new.



60.8824, 0.2850, 0.3089



77.5634, 0.2796, 0.3047



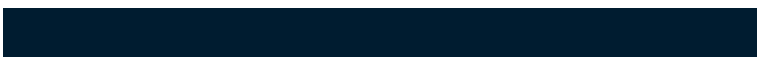
51.8631, 0.2837, 0.2849



14.5466, 0.2981, 0.3188



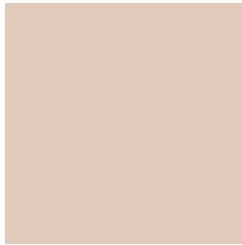
12.4894, 0.1845, 0.1842



1.0420, 0.1913, 0.2087

Previews

White Background



This preview shows how the Yxy color 61.7514, 0.3437, 0.3483 looks on a white background.

Color Contrast Check

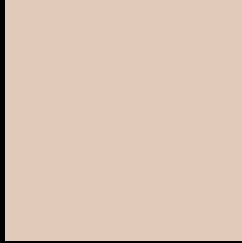
Large Text (above 18pt) WCAG AA × Fail

Any Text WCAG AA × Fail

Large Text (above 18pt) WCAG AAA × Fail

Any Text WCAG AAA × Fail

Black Background



This preview shows how the Yxy color 61.7514, 0.3437, 0.3483 looks on a black background.

Color Contrast Check

Large Text (above 18pt) WCAG AA ✓ Pass

Any Text WCAG AA ✓ Pass

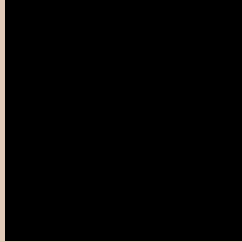
Large Text (above 18pt) WCAG AAA ✓ Pass

Any Text WCAG AAA ✓ Pass

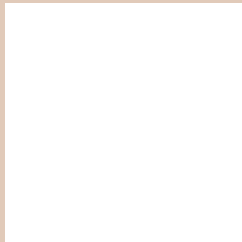
If you want to check with other color combinations, try the [Color Contrast Checker](#).

Yxy 61.7514, 0.3437, 0.3483

Background



This preview shows how black text looks on a background with the Yxy color 61.7514, 0.3437, 0.3483.



This preview shows how white text looks on a background with the Yxy color 61.7514, 0.3437, 0.3483.

Color Blindness Simulation

Color vision deficiency is a very complex topic, and I could not describe the different causes any better than Wikipedia does, so if you want to learn more, you should check out their [article about color blindness](#).

Dichromacy



Original Color

61.7514, 0.3437, 0.3483

Protanopia

61.5466, 0.3328, 0.3499

Deuteranopia

61.8844, 0.3509, 0.3435



Tritanopia

61.8503, 0.3261, 0.3126

Trichromacy



Original Color

61.7514, 0.3437, 0.3483

Protanomaly

61.6363, 0.3369, 0.3498

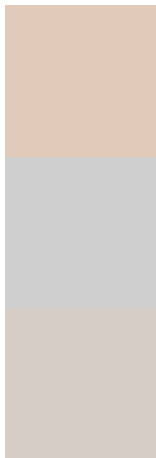
Deuteranomaly

61.8426, 0.3482, 0.3447

Tritanomaly

61.6526, 0.3328, 0.3246

Monochromacy



Original Color

61.7514, 0.3437, 0.3483

Achromatopsia

62.3960, 0.3127, 0.3290

Achromatomaly

62.0823, 0.3240, 0.3359

CSS Examples

Text

The CSS property to change the color of the text to Yxy 61.7514, 0.3437, 0.3483 is called "color". The color property can be set on classes, ids or directly on the HTML element.

This example shows how text in the color `rgb(225, 202, 185)` looks like.

```
.text, #text, p{  
    color:rgb(225, 202, 185)  
}
```

If you want to add a text shadow in that color use the text-shadow property, you can generate a text shadow directly with our [CSS Text Shadow Generator](#).

Here you see how black text with a 4 pixel rgb(225, 202, 185) colored shadow looks like.

```
.shadow{ text-shadow: 4px 4px 2px rgb(225, 202, 185) }
```

Border

The CSS property to change the border of an element to Yxy 61.7514, 0.3437, 0.3483 is called "border". The border property can be set on classes, ids or directly on the HTML element.

This example shows the color as border, it can be applied via the CSS property "border" or "border-color".

```
.border, #border, table{ border:4px solid rgb(225, 202, 185) }
```

If only the border color should be changed use the property `border-color`.

```
.border{ border-color:rgb(225, 202, 185) }
```

If you want to add a box shadow in that color use:

Here you see how a box with a 4 pixel `rgb(225, 202, 185)` colored shadow looks like.

```
.boxshadow{ -moz-box-shadow:4px 4px 4px 4px rgb(225, 202, 185); -webkit-box-shadow:4px 4px 4px 4px rgb(225, 202, 185); box-shadow:4px 4px 4px 4px rgb(225, 202, 185) }
```


Background

The CSS property to change the background color of an element to Yxy 61.7514, 0.3437, 0.3483 is called "background". The background property can be set on classes, ids or directly on the HTML element.

```
.background, #background, body{  
background: rgb(225, 202, 185) }
```

If only the background color should be changed can be used:

```
.background{ background-color: rgb(225,  
202, 185) }
```

This example shows the color as background, it is applied via the CSS property "background".

To optimize and compress your CSS code, you can use our [online CSS compressor and optimizer](#) based on csstidy. If you want to create a linear or radial gradient as background or border, check our [CSS Gradient Generator](#).

Hey! You found this booklet interesting? Support Converting Colors with the new Membership Option!

The pro membership hides all ads, plus gives you double the colors in the color bucket, and more awesome pro features!

[Learn more, Memberships starting at \\$2.50/m!](#)

**Follow me
on Twitter!**

@ConvertingColor