

Converting Colors

Yxy(61.5169, 0.3224, 0.3288)

Have a look what the booklet for
Yxy(61.5169, 0.3224, 0.3288)
contains.

Yxy(61.6226, 0.3228, 0.3290)	3
<i>Conversions</i>	4
<i>Details</i>	6
<i>Harmonies</i>	12
<i>Previews</i>	24
<i>Color Blindness Simulation</i>	27
<i>CSS Examples</i>	30

Color

Yxy(61.6226, 0.3228, 0.3290)

Conversions

Conversions Part 1

Format	Color
Hex	D8CBCB
RGB	216, 203, 203
RGB Percent	85%, 80%, 80%
CMY	0.1528, 0.2039, 0.2038
CMYK	0.00, 0.06, 0.06, 0.15
HSL	360°, 14%, 82%
HSV	360°, 6%, 85%
XYZ	60.4613, 61.6226, 65.2188
YIQ	206.8870, 7.7480, 2.7560

Conversions

Conversions Part 2

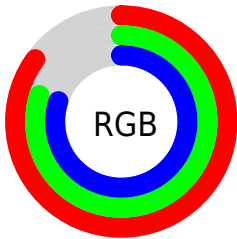
Format	Color
R _Y B	216, 203, 203
Decimal	14207947
CIE Lab	82.71, 4.53, 1.60
CIE LCh	83, 4.806, 19.482
Yxy	61.6226, 0.3228, 0.3290
Android (android.graphics.Color)	4292398027 (0xFFD8CBCB)
YUV	206.8870, -1.9163, 7.9921
Hunter-Lab	78.5001, 0.1069, 5.6912

Details

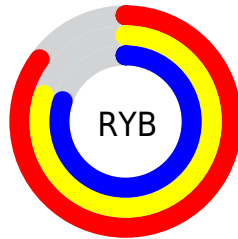
The Yxy color **61.6226, 0.3228, 0.3290** is a light color, and the websafe version is hex **CCCCCC**. A complement of this color would be **66.7785, 0.3034, 0.3290**, and the grayscale version is **62.3331, 0.3127, 0.3290**.

A 20% lighter version of the original color is **100.0000, 0.3127, 0.3290**, and **31.2419, 0.3251, 0.3290** is the 20% darker color. If you saturate the color by 10%, you get **51.1656, 0.3429, 0.3290**, and if you desaturate by 10%, it is **73.6496, 0.3068, 0.3290**.

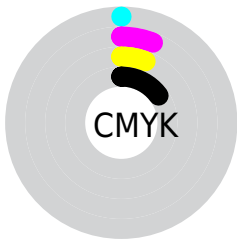
Distribution



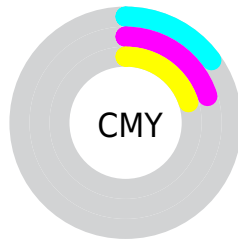
- Red (85%)
- Green (80%)
- Blue (80%)



- Red (85%)
- Yellow (80%)
- Blue (80%)



- Cyan (0%)
- Magenta (6%)
- Yellow (6%)
- Black (15%)



- Cyan (15%)
- Magenta (20%)
- Yellow (20%)

Brightness & Saturation Gradients

These gradients show how the Yxy color 61.6226, 0.3228, 0.3290 changes by changing the brightness by 10 percent. The first figure shows a shift by +10% for each color and the second figure -10%.

Similar to the brightness gradients but the following saturation gradients show a change of the Yxy color 61.6226, 0.3228, 0.3290 by changing the saturation by 10% instead.

■ 61.6226, 0.3228,
0.3290

■ 61.6226, 0.3228,
0.3290

430.5531, 0.3180,
0.3290

■ 44.7278, 0.3239,
0.3290

107.1799, 0.3211,
0.3290

■ 31.2431, 0.3254,
0.3290

136.6112, 0.3204,
0.3290

■ 20.7840, 0.3272,
0.3289

170.9901, 0.3199,
0.3290

■ 12.9662, 0.3297,
0.3289

210.7011, 0.3194,
0.3290

■ 7.4053, 0.3332,
0.3288

256.1285, 0.3190,
0.3290

■ 3.7168, 0.3386,
0.3287

307.6567, 0.3186,

■ 1.5165, 0.3477,

0.3290

0.3284

365.6701, 0.3183,
0.3290

0.3003, 0.4346,
0.3295

0.0000, 0.0000,
0.0000

61.6226, 0.3228,
0.3290

61.6226, 0.3228,
0.3290

51.1656, 0.3429,
0.3290

73.6496, 0.3068,
0.3290

42.2062, 0.3679,
0.3290

87.2992, 0.2940,
0.3290

34.6783, 0.3991,
0.3291

93.3428, 0.2894,
0.3289

28.5079, 0.4369,
0.3291

■ 23.6141, 0.4809,
0.3292

■ 19.9076, 0.5288,
0.3294

■ 17.2876, 0.5750,
0.3295

■ 15.6366, 0.6123,
0.3297

■ 14.8085, 0.6342,
0.3299

Harmonies

Analogous

The Analogous color harmony consists of three colors that are next to each other on the color wheel.



61.6226, 0.3181, 0.3238



61.6226, 0.3228, 0.3290



61.6226, 0.3247, 0.3343

Triad

The Triadic color harmony groups three colors that are evenly spaced from another and form a triangle on the color wheel.



61.6226, 0.3228, 0.3290



61.6226, 0.3133, 0.3383



61.6226, 0.3021, 0.3198

Complementary

The Complementary color scheme is a pair of colors which are on the opposite of each other on the color wheel.



61.6226, 0.3228, 0.3290



66.7785, 0.3034, 0.3290

Split Complementary

Split-complementary colors differ from the complementary color scheme. The scheme consists of three colors, the original color and two neighbors of the complement color.



61.6226, 0.3009, 0.3236



61.6226, 0.3228, 0.3290



61.6226, 0.3073, 0.3343

Square

The Square scheme is like the rectangle color scheme, but the four colors are evenly spaced on the color wheel.



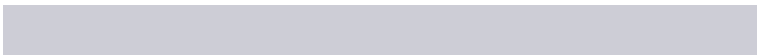
61.6226, 0.3228, 0.3290



61.6226, 0.3192, 0.3397



61.6226, 0.3027, 0.3289



61.6226, 0.3062, 0.3185

Rectangle

The Rectangle color scheme consists of four colors that form a rectangle on the color wheel.



61.6226, 0.3228, 0.3290



61.6226, 0.3242, 0.3371



61.6226, 0.3027, 0.3289



61.6226, 0.3013, 0.3208

Sweetspot

The Sweet Spot groups the original color and five complimentary colors.



61.6253, 0.3228, 0.3290



96.4655, 0.3159, 0.3290



62.2387, 0.3132, 0.3144



20.6846, 0.3158, 0.3290



0.0000, 0.0000, 0.0000



21.4041, 0.3127, 0.3290

Same Dimension

The Same Dimension uses a secret algorithm to generate beautiful new colors.



61.6253, 0.3228, 0.3290



88.0404, 0.3247, 0.3290



64.6593, 0.3222, 0.3362



12.8595, 0.3255, 0.3290



8.6418, 0.6399, 0.3299



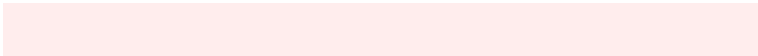
0.5214, 0.6392, 0.3295

Inverse Universe

The Inverse Universe completely reimagines the original color for something new.



61.6253, 0.3228, 0.3290



88.0404, 0.3247, 0.3290



63.6138, 0.3035, 0.3217



12.8595, 0.3255, 0.3290



8.6418, 0.6399, 0.3299



0.5214, 0.6392, 0.3295

Previews

White Background



This preview shows how the Yxy color 61.6226, 0.3228, 0.3290 looks on a white background.

Color Contrast Check

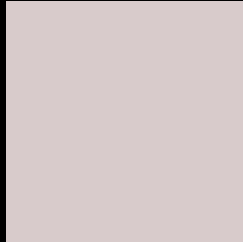
Large Text (above 18pt) WCAG AA × Fail

Any Text WCAG AA × Fail

Large Text (above 18pt) WCAG AAA × Fail

Any Text WCAG AAA × Fail

Black Background



This preview shows how the Yxy color 61.6226, 0.3228, 0.3290 looks on a black background.

Color Contrast Check

Large Text (above 18pt) WCAG AA ✓ Pass

Any Text WCAG AA ✓ Pass

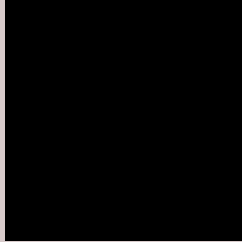
Large Text (above 18pt) WCAG AAA ✓ Pass

Any Text WCAG AAA ✓ Pass

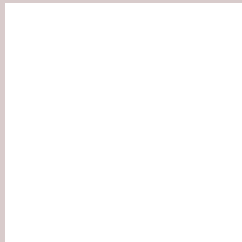
If you want to check with other color combinations, try the [Color Contrast Checker](#).

Yxy 61.6226, 0.3228, 0.3290

Background



This preview shows how black text looks on a background with the Yxy color 61.6226, 0.3228, 0.3290.



This preview shows how white text looks on a background with the Yxy color 61.6226, 0.3228, 0.3290.

Color Blindness Simulation

Color vision deficiency is a very complex topic, and I could not describe the different causes any better than Wikipedia does, so if you want to learn more, you should check out their [article about color blindness](#).

Dichromacy



Original Color

61.6226, 0.3228, 0.3290

Protanopia

61.7239, 0.3172, 0.3302

Deuteranopia

61.3752, 0.3304, 0.3235



Tritanopia

61.6885, 0.3143, 0.3111

Trichromacy



Original Color

61.6226, 0.3228, 0.3290

Protanomaly

61.5424, 0.3189, 0.3290

Deuteranomaly

61.1978, 0.3271, 0.3245

Tritanomaly

61.7462, 0.3171, 0.3177

Monochromacy



Original Color

61.6226, 0.3228, 0.3290

Achromatopsia

62.3960, 0.3127, 0.3290

Achromatomaly

62.3005, 0.3158, 0.3290

CSS Examples

Text

The CSS property to change the color of the text to Yxy 61.6226, 0.3228, 0.3290 is called "color". The color property can be set on classes, ids or directly on the HTML element.

This example shows how text in the color `rgb(216, 203, 203)` looks like.

```
.text, #text, p{  
    color:rgb(216, 203, 203)  
}
```

If you want to add a text shadow in that color use the text-shadow property, you can generate a text shadow directly with our [CSS Text Shadow Generator](#).

Here you see how black text with a 4 pixel rgb(216, 203, 203) colored shadow looks like.

```
.shadow{ text-shadow: 4px 4px 2px rgb(216, 203, 203) }
```

Border

The CSS property to change the border of an element to Yxy 61.6226, 0.3228, 0.3290 is called "border". The border property can be set on classes, ids or directly on the HTML element.

This example shows the color as border, it can be applied via the CSS property "border" or "border-color".

```
.border, #border, table{ border:4px solid rgb(216, 203, 203) }
```

If only the border color should be changed use the property `border-color`.

```
.border{ border-color:rgb(216, 203, 203) }
```

If you want to add a box shadow in that color use:

Here you see how a box with a 4 pixel `rgb(216, 203, 203)` colored shadow looks like.

```
.boxshadow{ -moz-box-shadow:4px 4px 4px 4px rgb(216, 203, 203); -webkit-box-shadow:4px 4px 4px 4px rgb(216, 203, 203); box-shadow:4px 4px 4px 4px rgb(216, 203, 203) }
```


Background

The CSS property to change the background color of an element to Yxy 61.6226, 0.3228, 0.3290 is called "background". The background property can be set on classes, ids or directly on the HTML element.

```
.background, #background, body{  
background: rgb(216, 203, 203) }
```

If only the background color should be changed can be used:

```
.background{ background-color: rgb(216,  
203, 203) }
```

This example shows the color as background, it is applied via the CSS property "background".

To optimize and compress your CSS code, you can use our [online CSS compressor and optimizer](#) based on csstidy. If you want to create a linear or radial gradient as background or border, check our [CSS Gradient Generator](#).

Hey! You found this booklet interesting? Support Converting Colors with the new Membership Option!

The pro membership hides all ads, plus gives you double the colors in the color bucket, and more awesome pro features!

[Learn more, Memberships starting at \\$2.50/m!](#)

**Follow me
on Twitter!**

@ConvertingColor