

# Converting Colors

Yxy(61.5787, 0.3440, 0.3498)

Have a look what the booklet for  
Yxy(61.5787, 0.3440, 0.3498)  
contains.

<b>Yxy(61.5490, 0.3436, 0.3495)</b> .....	3
<b>Conversions</b> .....	4
<b>Details</b> .....	6
<b>Harmonies</b> .....	12
<b>Previews</b> .....	24
<b>Color Blindness Simulation</b> .....	27
<b>CSS Examples</b> .....	30

# Color

**Yxy(61.5490, 0.3436, 0.3495)**

# Conversions

## Conversions Part 1

Format	Color
Hex	E0CAB8
RGB	224, 202, 184
RGB Percent	88%, 79%, 72%
CMY	0.1216, 0.2078, 0.2784
CMYK	0.00, 0.10, 0.18, 0.12
HSL	27°, 39%, 80%
HSV	27°, 18%, 88%
XYZ	60.5100, 61.5490, 54.0469
YIQ	206.5260, 18.8900, -0.9340

# Conversions

## Conversions Part 2

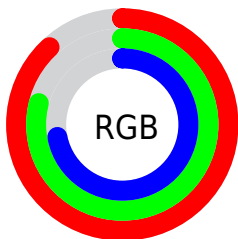
Format	Color
R <sub>Y</sub> B	224, 217, 184
Decimal	14731960
CIE Lab	82.67, 4.82, 11.77
CIE LCh	83, 12.717, 67.751
Yxy	61.5490, 0.3436, 0.3495
Android (android.graphics.Color)	4292922040 (0xFFE0CAB8)
YUV	206.5260, -11.1053, 15.3247
Hunter-Lab	78.4532, 0.3818, 14.0720

# Details

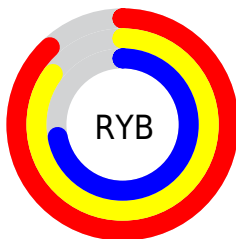
The Yxy color  $61.5490, 0.3436, 0.3495$  is a light color, and the websafe version is hex `CCCCCC`. A complement of this color would be  $59.7113, 0.2848, 0.3076$ , and the grayscale version is  $62.1407, 0.3127, 0.3290$ .

A 20% lighter version of the original color is  $99.0713, 0.3214, 0.3434$ , and  $31.1433, 0.3510, 0.3546$  is the 20% darker color. If you saturate the color by 10%, you get  $55.1348, 0.3646, 0.3617$ , and if you desaturate by 10%, it is  $68.5786, 0.3253, 0.3377$ .

# Distribution



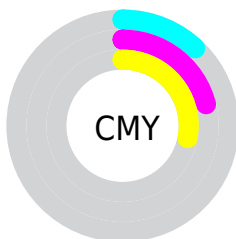
- Red (88%)
- Green (79%)
- Blue (72%)



- Red (88%)
- Yellow (85%)
- Blue (72%)



- Cyan (0%)
- Magenta (10%)
- Yellow (18%)
- Black (12%)




- Cyan (12%)
- Magenta (21%)
- Yellow (28%)

# Brightness & Saturation Gradients

These gradients show how the Yxy color 61.5490, 0.3436, 0.3495 changes by changing the brightness by 10 percent. The first figure shows a shift by +10% for each color and the second figure -10%.


Similar to the brightness gradients but the following saturation gradients show a change of the Yxy color 61.5490, 0.3436, 0.3495 by changing the saturation by 10% instead.




 61.5490, 0.3436,  
0.3495

 61.5490, 0.3436,  
0.3495

430.2841, 0.3288,  
0.3399

 44.6684, 0.3471,  
0.3517


 107.0734, 0.3384,  
0.3461

 31.1963, 0.3515,  
0.3545


136.4861, 0.3364,  
0.3448

 20.7484, 0.3572,  
0.3580


170.8448, 0.3346,  
0.3437

 12.9402, 0.3648,  
0.3627

210.5340, 0.3332,  
0.3427

 7.3874, 0.3755,  
0.3691

255.9382, 0.3319,  
0.3419

 3.7055, 0.3917,  
0.3783

307.4417, 0.3307,

 1.5102, 0.4209,

0.3411

0.3949

365.4288, 0.3297,  
0.3405

0.2959, 0.5741,  
0.4259

0.0000, 0.0000,  
0.0000

61.5490, 0.3436,  
0.3495

61.5490, 0.3436,  
0.3495

55.1348, 0.3646,  
0.3617

68.5786, 0.3253,  
0.3377

49.3101, 0.3884,  
0.3740

76.2322, 0.3095,  
0.3267

44.0590, 0.4149,  
0.3857

84.5288, 0.2958,  
0.3164

39.3618, 0.4437,  
0.3958

92.2265, 0.2939,  
0.3252

■ 35.1971, 0.4737,  
0.4032

■ 94.5846, 0.2940,  
0.3289

■ 31.5421, 0.5032,  
0.4065

■ 28.3715, 0.5301,  
0.4047

■ 25.6543, 0.5527,  
0.3976

■ 25.1206, 0.5573,  
0.3957

# Harmonies

## Analogous

The Analogous color harmony consists of three colors that are next to each other on the color wheel.



61.5490, 0.3438, 0.3372



61.5490, 0.3436, 0.3495



61.5490, 0.3350, 0.3567

# Triad

The Triadic color harmony groups three colors that are evenly spaced from another and form a triangle on the color wheel.



61.5490, 0.3436, 0.3495



61.5490, 0.2904, 0.3344



61.5490, 0.3044, 0.3033

# Complementary

The Complementary color scheme is a pair of colors which are on the opposite of each other on the color wheel.



61.5490, 0.3436, 0.3495



59.7113, 0.2848, 0.3076

# Split Complementary

Split-complementary colors differ from the complementary color scheme. The scheme consists of three colors, the original color and two neighbors of the complement color.



61.5490, 0.2905, 0.3020



61.5490, 0.3436, 0.3495



61.5490, 0.2826, 0.3195

# Square

The Square scheme is like the rectangle color scheme, but the four colors are evenly spaced on the color wheel.



61.5490, 0.3436, 0.3495



61.5490, 0.3041, 0.3481



61.5490, 0.2827, 0.3078



61.5490, 0.3208, 0.3110



# Rectangle

The Rectangle color scheme consists of four colors that form a rectangle on the color wheel.



61.5490, 0.3436, 0.3495



61.5490, 0.3257, 0.3574



61.5490, 0.2827, 0.3078



61.5490, 0.2993, 0.3021

# Sweetspot

The Sweet Spot groups the original color and five complimentary colors.



61.5518, 0.3436, 0.3495



94.8146, 0.3206, 0.3346



54.5888, 0.3289, 0.3042



20.1419, 0.3218, 0.3354



0.0000, 0.0000, 0.0000



21.4041, 0.3127, 0.3290



# Same Dimension

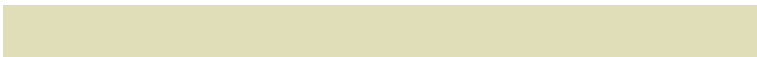
The Same Dimension uses a secret algorithm to generate beautiful new colors.



61.5518, 0.3436, 0.3495



79.6511, 0.3502, 0.3535



71.5405, 0.3398, 0.3711



14.7116, 0.3281, 0.3396



14.8471, 0.5547, 0.3978



1.2060, 0.5286, 0.4185

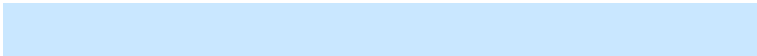


# Inverse Universe

The Inverse Universe completely reimagines the original color for something new.



59.7113, 0.2848, 0.3076



76.7911, 0.2795, 0.3032



50.6977, 0.2836, 0.2831



14.4863, 0.2981, 0.3182



11.6334, 0.1820, 0.1753



0.9845, 0.1892, 0.2010



# Previews

## White Background



This preview shows how the Yxy color 61.5490, 0.3436, 0.3495 looks on a white background.

## Color Contrast Check

Large Text (above 18pt) WCAG AA × Fail

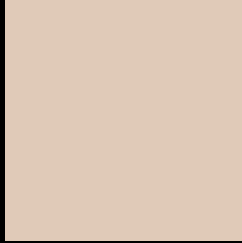
Any Text WCAG AA × Fail

Large Text (above 18pt) WCAG AAA × Fail

Any Text WCAG AAA × Fail



# Black Background



This preview shows how the Yxy color 61.5490, 0.3436, 0.3495 looks on a black background.

## Color Contrast Check

Large Text (above 18pt) WCAG AA ✓ Pass

Any Text WCAG AA ✓ Pass

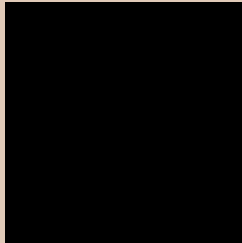
Large Text (above 18pt) WCAG AAA ✓ Pass

Any Text WCAG AAA ✓ Pass

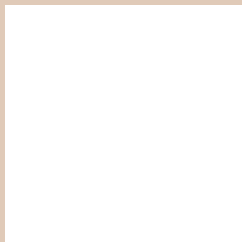
If you want to check with other color combinations, try the [Color Contrast Checker](#).

**Yxy 61.5490, 0.3436, 0.3495**

## **Background**



This preview shows how black text looks on a background with the Yxy color 61.5490, 0.3436, 0.3495.



This preview shows how white text looks on a background with the Yxy color 61.5490, 0.3436, 0.3495.

# Color Blindness Simulation

Color vision deficiency is a very complex topic, and I could not describe the different causes any better than Wikipedia does, so if you want to learn more, you should check out their [article about color blindness](#).

## Dichromacy



### Original Color

61.5490, 0.3436, 0.3495

### Protanopia

61.5040, 0.3335, 0.3511

### Deuteranopia

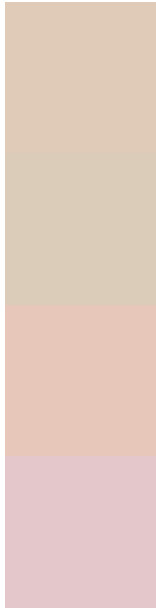
61.2146, 0.3511, 0.3435



## Tritanopia

61.6862, 0.3253, 0.3126

# Trichromacy



## Original Color

61.5490, 0.3436, 0.3495

## Protanomaly

61.5939, 0.3376, 0.3509

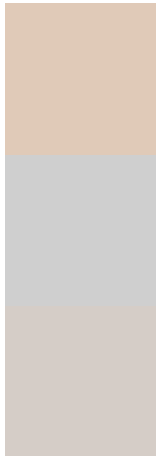
## Deuteranomaly

61.1726, 0.3484, 0.3448

## Tritanomaly

61.4420, 0.3327, 0.3257

# Monochromacy



## Original Color

61.5490, 0.3436, 0.3495

## Achromatopsia

62.3960, 0.3127, 0.3290

## Achromatomaly

61.9323, 0.3232, 0.3359

# CSS Examples

## Text

The CSS property to change the color of the text to Yxy 61.5490, 0.3436, 0.3495 is called "color". The color property can be set on classes, ids or directly on the HTML element.

This example shows how text in the color `rgb(224, 202, 184)` looks like.

```
.text, #text, p{  
    color:rgb(224, 202, 184)  
}
```

If you want to add a text shadow in that color use the text-shadow property, you can generate a text shadow directly with our [CSS Text Shadow Generator](#).

Here you see how black text with a 4 pixel rgb(224, 202, 184) colored shadow looks like.

```
.shadow{ text-shadow: 4px 4px 2px rgb(224, 202, 184) }
```

## Border

The CSS property to change the border of an element to Yxy 61.5490, 0.3436, 0.3495 is called "border". The border property can be set on classes, ids or directly on the HTML element.

This example shows the color as border, it can be applied via the CSS property "border" or "border-color".

```
.border, #border, table{ border:4px solid rgb(224, 202, 184) }
```

If only the border color should be changed use the property `border-color`.

```
.border{ border-color:rgb(224, 202, 184) }
```

If you want to add a box shadow in that color use:

Here you see how a box with a 4 pixel `rgb(224, 202, 184)` colored shadow looks like.

```
.boxshadow{ -moz-box-shadow:4px 4px 4px  
4px rgb(224, 202, 184); -webkit-box-  
shadow:4px 4px 4px 4px rgb(224, 202, 184);  
box-shadow:4px 4px 4px 4px rgb(224, 202,  
184) }
```



# Background

The CSS property to change the background color of an element to Yxy 61.5490, 0.3436, 0.3495 is called "background". The background property can be set on classes, ids or directly on the HTML element.

```
.background, #background, body{  
background: rgb(224, 202, 184) }
```

If only the background color should be changed can be used:

```
.background{ background-color: rgb(224,  
202, 184) }
```

This example shows the color as background, it is applied via the CSS property "background".

To optimize and compress your CSS code, you can use our [online CSS compressor and optimizer](#) based on csstidy. If you want to create a linear or radial gradient as background or border, check our [CSS Gradient Generator](#).

Hey! You found this booklet interesting? Support Converting Colors with the new Membership Option!

The pro membership hides all ads, plus gives you double the colors in the color bucket, and more awesome pro features!

**[Learn more, Memberships starting at \\$2.50/m!](#)**

**Follow me  
on Twitter!**

@ConvertingColor