

# Converting Colors

Yxy(61.5841, 0.3255, 0.3327)

Have a look what the booklet for  
Yxy(61.5841, 0.3255, 0.3327)  
contains.

<b>Yxy(61.6337, 0.3258, 0.3325)</b> .....	3
<b>Conversions</b> .....	4
<b>Details</b> .....	6
<b>Harmonies</b> .....	12
<b>Previews</b> .....	24
<b>Color Blindness Simulation</b> .....	27
<b>CSS Examples</b> .....	30

# Color

**Yxy(61.6337, 0.3258, 0.3325)**

# Conversions

## Conversions Part 1

Format	Color
Hex	D9CBC8
RGB	217, 203, 200
RGB Percent	85%, 80%, 78%
CMY	0.1491, 0.2039, 0.2158
CMYK	0.00, 0.06, 0.08, 0.15
HSL	11°, 18%, 82%
HSV	11°, 8%, 85%
XYZ	60.3918, 61.6337, 63.3391
YIQ	206.8440, 9.3070, 2.0350

# Conversions

## Conversions Part 2

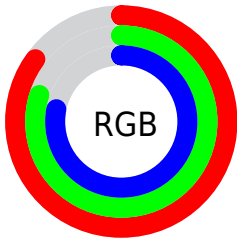
<b>Format</b>	<b>Color</b>
<b>R<sub>YB</sub></b>	217, 204, 200
Decimal	14273480
CIE <sub>Lab</sub>	82.72, 4.34, 3.25
CIE <sub>LCh</sub>	83, 5.421, 36.816
Yxy	61.6337, 0.3258, 0.3325
Android (android.graphics.Color)	4292463560 (0xFFD9CBC8)
YUV	206.8440, -3.3741, 8.9068
Hunter-Lab	78.5071, -0.0760, 7.1202

# Details

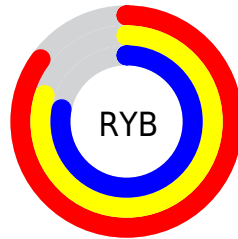
The Yxy color **61.6337, 0.3258, 0.3325** is a light color, and the websafe version is hex **CCCCCC**. A complement of this color would be **65.3541, 0.3007, 0.3255**, and the grayscale version is **62.3087, 0.3127, 0.3290**.

A 20% lighter version of the original color is **100.0000, 0.3127, 0.3290**, and **31.2516, 0.3291, 0.3336** is the 20% darker color. If you saturate the color by 10%, you get **52.7518, 0.3457, 0.3373**, and if you desaturate by 10%, it is **71.6330, 0.3095, 0.3281**.

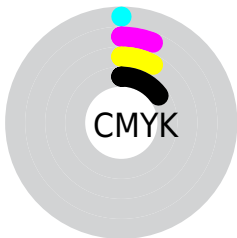
# Distribution



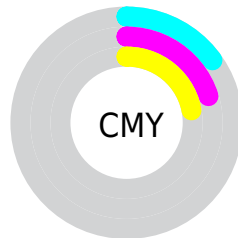
- Red (85%)
- Green (80%)
- Blue (78%)



- Red (85%)
- Yellow (80%)
- Blue (78%)



- Cyan (0%)
- Magenta (6%)
- Yellow (8%)
- Black (15%)



- Cyan (15%)
- Magenta (20%)
- Yellow (22%)

# Brightness & Saturation Gradients

These gradients show how the Yxy color 61.6337, 0.3258, 0.3325 changes by changing the brightness by 10 percent. The first figure shows a shift by +10% for each color and the second figure -10%.

Similar to the brightness gradients but the following saturation gradients show a change of the Yxy color 61.6337, 0.3258, 0.3325 by changing the saturation by 10% instead.



■ 61.6337, 0.3258,  
0.3325

■ 61.6337, 0.3258,  
0.3325

430.5937, 0.3195,  
0.3309

■ 44.7368, 0.3273,  
0.3329

107.1960, 0.3236,  
0.3319

■ 31.2502, 0.3291,  
0.3333

136.6301, 0.3227,  
0.3317

■ 20.7894, 0.3316,  
0.3339

171.0121, 0.3220,  
0.3315

■ 12.9702, 0.3348,  
0.3347

210.7263, 0.3214,  
0.3314

■ 7.4080, 0.3394,  
0.3358

256.1572, 0.3208,  
0.3312

■ 3.7185, 0.3463,  
0.3374

307.6891, 0.3204,

■ 1.5174, 0.3582,

0.3311

0.3399

365.7065, 0.3199,  
0.3310

0.3009, 0.4940,  
0.3793

0.0000, 0.0000,  
0.0000

61.6337, 0.3258,  
0.3325

61.6337, 0.3258,  
0.3325

52.7518, 0.3457,  
0.3373

71.6330, 0.3095,  
0.3281

44.9405, 0.3697,  
0.3422

82.7782, 0.2960,  
0.3240

38.1615, 0.3986,  
0.3472

93.4905, 0.2900,  
0.3289

32.3714, 0.4327,  
0.3518

■ 27.5234, 0.4717,  
0.3554

■ 23.5672, 0.5137,  
0.3571

■ 20.4473, 0.5555,  
0.3562

■ 18.1020, 0.5919,  
0.3520

■ 16.4588, 0.6181,  
0.3450

# Harmonies

## Analogous

The Analogous color harmony consists of three colors that are next to each other on the color wheel.



61.6337, 0.3222, 0.3264



61.6337, 0.3258, 0.3325



61.6337, 0.3259, 0.3377

# Triad

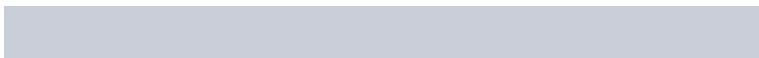
The Triadic color harmony groups three colors that are evenly spaced from another and form a triangle on the color wheel.



61.6337, 0.3258, 0.3325



61.6337, 0.3093, 0.3372



61.6337, 0.3031, 0.3174

# Complementary

The Complementary color scheme is a pair of colors which are on the opposite of each other on the color wheel.



61.6337, 0.3258, 0.3325



65.3541, 0.3007, 0.3255

# Split Complementary

Split-complementary colors differ from the complementary color scheme. The scheme consists of three colors, the original color and two neighbors of the complement color.



61.6337, 0.2997, 0.3202



61.6337, 0.3258, 0.3325



61.6337, 0.3033, 0.3316

# Square

The Square scheme is like the rectangle color scheme, but the four colors are evenly spaced on the color wheel.



61.6337, 0.3258, 0.3325



61.6337, 0.3163, 0.3405



61.6337, 0.2998, 0.3253



61.6337, 0.3090, 0.3178



# Rectangle

The Rectangle color scheme consists of four colors that form a rectangle on the color wheel.



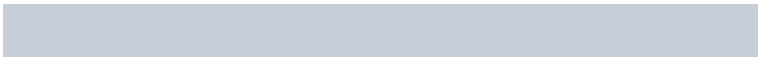
61.6337, 0.3258, 0.3325



61.6337, 0.3239, 0.3401



61.6337, 0.2998, 0.3253



61.6337, 0.3016, 0.3180

# Sweetspot

The Sweet Spot groups the original color and five complimentary colors.



61.6364, 0.3258, 0.3325



97.0320, 0.3159, 0.3299



60.9090, 0.3157, 0.3130



20.8000, 0.3157, 0.3298



0.0000, 0.0000, 0.0000



21.4041, 0.3127, 0.3290

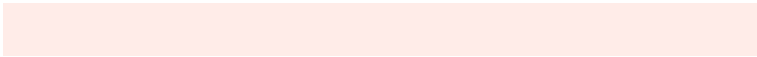


# Same Dimension

The Same Dimension uses a secret algorithm to generate beautiful new colors.



61.6364, 0.3258, 0.3325



87.1652, 0.3281, 0.3331



65.6663, 0.3249, 0.3419



13.4256, 0.3287, 0.3332



9.9079, 0.6208, 0.3453



0.7564, 0.5909, 0.3690

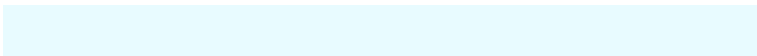


# Inverse Universe

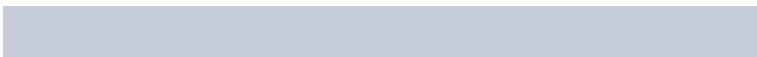
The Inverse Universe completely reimagines the original color for something new.



65.3541, 0.3007, 0.3255



93.3174, 0.2988, 0.3249



61.2569, 0.3007, 0.3158



14.4134, 0.2982, 0.3247



22.5092, 0.2087, 0.2712

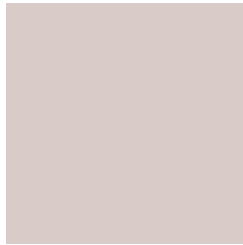


1.5639, 0.2116, 0.2816



# Previews

## White Background



This preview shows how the Yxy color 61.6337, 0.3258, 0.3325 looks on a white background.

## Color Contrast Check

Large Text (above 18pt) WCAG AA × Fail

Any Text WCAG AA × Fail

Large Text (above 18pt) WCAG AAA × Fail

Any Text WCAG AAA × Fail



# Black Background



This preview shows how the Yxy color 61.6337, 0.3258, 0.3325 looks on a black background.

## Color Contrast Check

Large Text (above 18pt) WCAG AA ✓ Pass

Any Text WCAG AA ✓ Pass

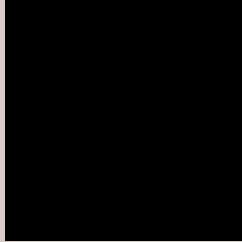
Large Text (above 18pt) WCAG AAA ✓ Pass

Any Text WCAG AAA ✓ Pass

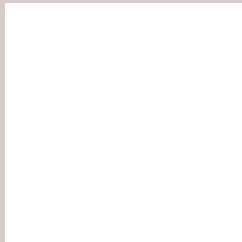
If you want to check with other color combinations, try the [Color Contrast Checker](#).

**Yxy 61.6337, 0.3258, 0.3325**

## **Background**



This preview shows how black text looks on a background with the Yxy color 61.6337, 0.3258, 0.3325.



This preview shows how white text looks on a background with the Yxy color 61.6337, 0.3258, 0.3325.

# Color Blindness Simulation

Color vision deficiency is a very complex topic, and I could not describe the different causes any better than Wikipedia does, so if you want to learn more, you should check out their [article about color blindness](#).

## Dichromacy



### Original Color

61.6337, 0.3258, 0.3325

### Protanopia

61.7286, 0.3202, 0.3336

### Deuteranopia

61.5579, 0.3343, 0.3268



## Tritanopia

61.7912, 0.3158, 0.3123

# Trichromacy



## Original Color

61.6337, 0.3258, 0.3325

## Protanomaly

61.5489, 0.3218, 0.3325

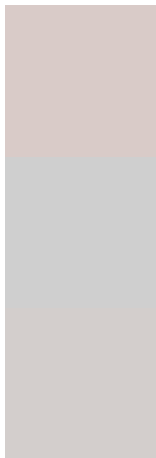
## Deuteranomaly

61.3729, 0.3309, 0.3279

## Tritanomaly

61.7996, 0.3193, 0.3200

# Monochromacy



## Original Color

61.6337, 0.3258, 0.3325

## Achromatopsia

62.3960, 0.3127, 0.3290

## Achromatomaly

62.3511, 0.3179, 0.3313

# CSS Examples

## Text

The CSS property to change the color of the text to Yxy 61.6337, 0.3258, 0.3325 is called "color". The color property can be set on classes, ids or directly on the HTML element.

This example shows how text in the color `rgb(217, 203, 200)` looks like.

```
.text, #text, p{  
    color:rgb(217, 203, 200)  
}
```

If you want to add a text shadow in that color use the text-shadow property, you can generate a text shadow directly with our [CSS Text Shadow Generator](#).

Here you see how black text with a 4 pixel rgb(217, 203, 200) colored shadow looks like.

```
.shadow{ text-shadow: 4px 4px 2px rgb(217, 203, 200) }
```

## Border

The CSS property to change the border of an element to Yxy 61.6337, 0.3258, 0.3325 is called "border". The border property can be set on classes, ids or directly on the HTML element.

This example shows the color as border, it can be applied via the CSS property "border" or "border-color".

```
.border, #border, table{ border:4px solid rgb(217, 203, 200) }
```

If only the border color should be changed use the property border-color.

```
.border{ border-color:rgb(217, 203, 200) }
```

If you want to add a box shadow in that color use:

Here you see how a box with a 4 pixel rgb(217, 203, 200) colored shadow looks like.

```
.boxshadow{ -moz-box-shadow:4px 4px 4px  
4px rgb(217, 203, 200); -webkit-box-  
shadow:4px 4px 4px 4px rgb(217, 203, 200);  
box-shadow:4px 4px 4px 4px rgb(217, 203,  
200) }
```



# Background

The CSS property to change the background color of an element to Yxy 61.6337, 0.3258, 0.3325 is called "background". The background property can be set on classes, ids or directly on the HTML element.

```
.background, #background, body{  
background: rgb(217, 203, 200) }
```

If only the background color should be changed can be used:

```
.background{ background-color: rgb(217,  
203, 200) }
```

This example shows the color as background, it is applied via the CSS property "background".

To optimize and compress your CSS code, you can use our [online CSS compressor and optimizer](#) based on csstidy. If you want to create a linear or radial gradient as background or border, check our [CSS Gradient Generator](#).

Hey! You found this booklet interesting? Support Converting Colors with the new Membership Option!

The pro membership hides all ads, plus gives you double the colors in the color bucket, and more awesome pro features!

**[Learn more, Memberships starting at \\$2.50/m!](#)**

**Follow me  
on Twitter!**

@ConvertingColor