

Converting Colors

Yxy(61.5849, 0.3550, 0.3528)

Have a look what the booklet for
Yxy(61.5849, 0.3550, 0.3528)
contains.

Yxy(61.7190, 0.3545, 0.3525)	3
Conversions	4
Details	6
Harmonies	12
Previews	24
Color Blindness Simulation	27
CSS Examples	30

Color

Yxy(61.7190, 0.3545, 0.3525)

Conversions

Conversions Part 1

Format	Color
Hex	E8C8B3
RGB	232, 200, 179
RGB Percent	91%, 78%, 70%
CMY	0.0902, 0.2157, 0.2979
CMYK	0.00, 0.14, 0.23, 0.09
HSL	24°, 54%, 81%
HSV	24°, 23%, 91%
XYZ	62.0692, 61.7190, 51.3012
YIQ	207.1740, 25.8130, 0.2530

Conversions

Conversions Part 2

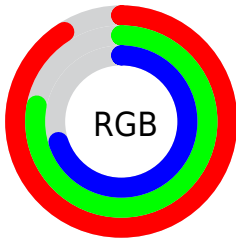
Format	Color
R _Y B	232, 214, 179
Decimal	15255731
CIE Lab	82.76, 8.09, 14.66
CIE LCh	83, 16.738, 61.109
Yxy	61.7190, 0.3545, 0.3525
Android (android.graphics.Color)	4293445811 (0xFFE8C8B3)
YUV	207.1740, -13.8898, 21.7724
Hunter-Lab	78.5614, 3.5453, 16.2762

Details

The Yxy color **61.7190, 0.3545, 0.3525** is a light color, and the websafe version is hex **FFCCCC**. A complement of this color would be **62.0046, 0.2770, 0.3043**, and the grayscale version is **62.5955, 0.3127, 0.3290**.

A 20% lighter version of the original color is **98.7782, 0.3244, 0.3483**, and **31.2942, 0.3658, 0.3583** is the 20% darker color. If you saturate the color by 10%, you get **54.6659, 0.3778, 0.3634**, and if you desaturate by 10%, it is **69.5303, 0.3344, 0.3418**.

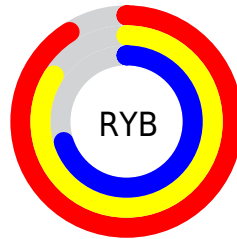
Distribution



Red (91%)

Green (78%)

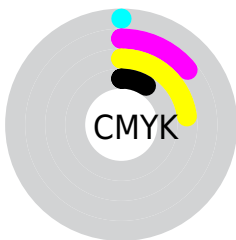
Blue (70%)



Red (91%)

Yellow (84%)

Blue (70%)

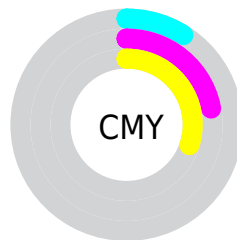


Cyan (0%)

Magenta (14%)

Yellow (23%)

Black (9%)



Cyan (9%)


Magenta (22%)


Yellow (30%)

Brightness & Saturation Gradients

These gradients show how the Yxy color 61.7190, 0.3545, 0.3525 changes by changing the brightness by 10 percent. The first figure shows a shift by +10% for each color and the second figure -10%.

Similar to the brightness gradients but the following saturation gradients show a change of the Yxy color 61.7190, 0.3545, 0.3525 by changing the saturation by 10% instead.


 61.7190, 0.3545,
0.3525

 61.7190, 0.3545,
0.3525

430.9054, 0.3345,
0.3416

 44.8057, 0.3592,
0.3550


 107.3193, 0.3474,
0.3487

 31.3044, 0.3652,
0.3580

136.7751, 0.3447,
0.3473

 20.8307, 0.3729,
0.3619


171.1805, 0.3424,
0.3460

 13.0003, 0.3832,
0.3669

210.9199, 0.3404,
0.3449

 7.4288, 0.3976,
0.3735

256.3776, 0.3386,
0.3439

 3.7317, 0.4191,
0.3826

307.9382, 0.3371,

 1.5246, 0.4621,

0.3431

0.4023

365.9860, 0.3357,
0.3423

0.3060, 0.6147,
0.3853

0.0000, 0.0000,
0.0000

61.7190, 0.3545,
0.3525

61.7190, 0.3545,
0.3525

54.6659, 0.3778,
0.3634

69.5303, 0.3344,
0.3418

48.3386, 0.4043,
0.3741

78.1138, 0.3171,
0.3317

42.7150, 0.4339,
0.3838

87.4941, 0.3024,
0.3223

37.7681, 0.4658,
0.3915

95.8943, 0.2987,
0.3290

■ 33.4692, 0.4984,
0.3958

■ 29.7869, 0.5297,
0.3955

■ 26.6859, 0.5568,
0.3898

■ 24.7921, 0.5732,
0.3831

Harmonies

Analogous

The Analogous color harmony consists of three colors that are next to each other on the color wheel.



61.7190, 0.3521, 0.3355



61.7190, 0.3545, 0.3525



61.7190, 0.3453, 0.3641

Triad

The Triadic color harmony groups three colors that are evenly spaced from another and form a triangle on the color wheel.



61.7190, 0.3545, 0.3525



61.7190, 0.2869, 0.3404



61.7190, 0.2972, 0.2944

Complementary

The Complementary color scheme is a pair of colors which are on the opposite of each other on the color wheel.



61.7190, 0.3545, 0.3525



62.0046, 0.2770, 0.3043

Split Complementary

Split-complementary colors differ from the complementary color scheme. The scheme consists of three colors, the original color and two neighbors of the complement color.



61.7190, 0.2806, 0.2945



61.7190, 0.3545, 0.3525



61.7190, 0.2748, 0.3204

Square

The Square scheme is like the rectangle color scheme, but the four colors are evenly spaced on the color wheel.



61.7190, 0.3545, 0.3525



61.7190, 0.3060, 0.3576



61.7190, 0.2726, 0.3038



61.7190, 0.3185, 0.3027

Rectangle

The Rectangle color scheme consists of four colors that form a rectangle on the color wheel.



61.7190, 0.3545, 0.3525



61.7190, 0.3340, 0.3668



61.7190, 0.2726, 0.3038



61.7190, 0.2909, 0.2934

Sweetspot

The Sweet Spot groups the original color and five complimentary colors.



61.7218, 0.3545, 0.3525



92.2179, 0.3241, 0.3359



54.1417, 0.3316, 0.2931



19.5997, 0.3251, 0.3365



0.0000, 0.0000, 0.0000



21.4041, 0.3127, 0.3290

Same Dimension

The Same Dimension uses a secret algorithm to generate beautiful new colors.



61.7218, 0.3545, 0.3525



72.6143, 0.3641, 0.3572



74.7002, 0.3485, 0.3797



15.3001, 0.3283, 0.3384



13.9944, 0.5703, 0.3854



1.2113, 0.5435, 0.4067

Inverse Universe

The Inverse Universe completely reimagines the original color for something new.



62.0046, 0.2770, 0.3043



73.0133, 0.2702, 0.2989



50.1953, 0.2746, 0.2726



15.3279, 0.2981, 0.3195



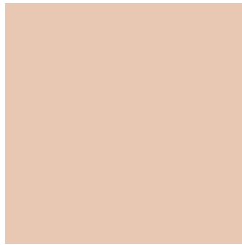
13.9145, 0.1873, 0.1941



1.2084, 0.1933, 0.2158

Previews

White Background



This preview shows how the Yxy color 61.7190, 0.3545, 0.3525 looks on a white background.

Color Contrast Check

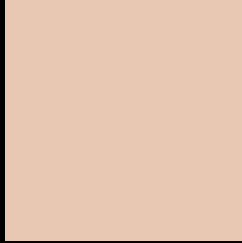
Large Text (above 18pt) WCAG AA × Fail

Any Text WCAG AA × Fail

Large Text (above 18pt) WCAG AAA × Fail

Any Text WCAG AAA × Fail

Black Background



This preview shows how the Yxy color 61.7190, 0.3545, 0.3525 looks on a black background.

Color Contrast Check

Large Text (above 18pt) WCAG AA ✓ Pass

Any Text WCAG AA ✓ Pass

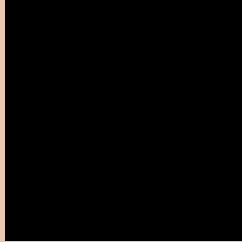
Large Text (above 18pt) WCAG AAA ✓ Pass

Any Text WCAG AAA ✓ Pass

If you want to check with other color combinations, try the [Color Contrast Checker](#).

Yxy 61.7190, 0.3545, 0.3525

Background



This preview shows how black text looks on a background with the Yxy color 61.7190, 0.3545, 0.3525.



This preview shows how white text looks on a background with the Yxy color 61.7190, 0.3545, 0.3525.

Color Blindness Simulation

Color vision deficiency is a very complex topic, and I could not describe the different causes any better than Wikipedia does, so if you want to learn more, you should check out their [article about color blindness](#).

Dichromacy



Original Color

61.7190, 0.3545, 0.3525

Protanopia

62.1189, 0.3379, 0.3568

Deuteranopia

61.9344, 0.3581, 0.3512



Tritanopia

61.5662, 0.3335, 0.3118

Trichromacy



Original Color

61.7190, 0.3545, 0.3525

Protanomaly

62.0515, 0.3439, 0.3553

Deuteranomaly

61.7637, 0.3573, 0.3512

Tritanomaly

61.7182, 0.3418, 0.3269

Monochromacy



Original Color

61.7190, 0.3545, 0.3525

Achromatopsia

62.3960, 0.3127, 0.3290

Achromatomaly

61.8159, 0.3271, 0.3371

CSS Examples

Text

The CSS property to change the color of the text to Yxy 61.7190, 0.3545, 0.3525 is called "color". The color property can be set on classes, ids or directly on the HTML element.

This example shows how text in the color `rgb(232, 200, 179)` looks like.

```
.text, #text, p{  
    color:rgb(232, 200, 179)  
}
```

If you want to add a text shadow in that color use the text-shadow property, you can generate a text shadow directly with our [CSS Text Shadow Generator](#).

Here you see how black text with a 4 pixel rgb(232, 200, 179) colored shadow looks like.

```
.shadow{ text-shadow: 4px 4px 2px rgb(232, 200, 179) }
```

Border

The CSS property to change the border of an element to Yxy 61.7190, 0.3545, 0.3525 is called "border". The border property can be set on classes, ids or directly on the HTML element.

This example shows the color as border, it can be applied via the CSS property "border" or "border-color".

```
.border, #border, table{ border:4px solid rgb(232, 200, 179) }
```

If only the border color should be changed use the property `border-color`.

```
.border{ border-color:rgb(232, 200, 179) }
```

If you want to add a box shadow in that color use:

Here you see how a box with a 4 pixel `rgb(232, 200, 179)` colored shadow looks like.

```
.boxshadow{ -moz-box-shadow:4px 4px 4px  
4px rgb(232, 200, 179); -webkit-box-  
shadow:4px 4px 4px 4px rgb(232, 200, 179);  
box-shadow:4px 4px 4px 4px rgb(232, 200,  
179) }
```


Background

The CSS property to change the background color of an element to Yxy 61.7190, 0.3545, 0.3525 is called "background". The background property can be set on classes, ids or directly on the HTML element.

```
.background, #background, body{  
background: rgb(232, 200, 179) }
```

If only the background color should be changed can be used:

```
.background{ background-color: rgb(232,  
200, 179) }
```

This example shows the color as background, it is applied via the CSS property "background".

To optimize and compress your CSS code, you can use our [online CSS compressor and optimizer](#) based on csstidy. If you want to create a linear or radial gradient as background or border, check our [CSS Gradient Generator](#).

Hey! You found this booklet interesting? Support Converting Colors with the new Membership Option!

The pro membership hides all ads, plus gives you double the colors in the color bucket, and more awesome pro features!

[Learn more, Memberships starting at \\$2.50/m!](#)

**Follow me
on Twitter!**

@ConvertingColor