

Converting Colors

Yxy(61.5875, 0.4126, 0.3508)

Have a look what the booklet for
Yxy(61.5875, 0.4126, 0.3508)
contains.

Yxy(57.2540, 0.3958, 0.3524)	3
<i>Conversions</i>	4
<i>Details</i>	6
<i>Harmonies</i>	12
<i>Previews</i>	24
<i>Color Blindness Simulation</i>	27
<i>CSS Examples</i>	30

Color

Yxy(57.2540, 0.3958, 0.3524)

Conversions

Conversions Part 1

Format	Color
Hex	FFB6A0
RGB	255, 182, 160
RGB Percent	100%, 71%, 63%
CMY	0.0001, 0.2862, 0.3726
CMYK	0.00, 0.29, 0.37, 0.00
HSL	14°, 100%, 81%
HSV	14°, 37%, 100%
XYZ	64.3051, 57.2540, 40.9096
YIQ	201.3190, 50.5700, 8.6340

Conversions

Conversions Part 2

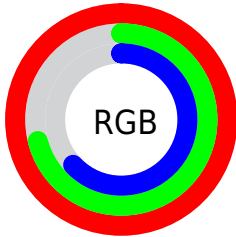
Format	Color
R _Y B	255, 189, 160
Decimal	16758432
CIE Lab	80.32, 23.76, 21.76
CIE LCh	80, 32.214, 42.480
Yxy	57.2540, 0.3958, 0.3524
Android (android.graphics.Color)	4294948512 (0xFFFFB6A0)
YUV	201.3190, -20.3703, 47.0782
Hunter-Lab	75.6664, 19.2823, 20.9108

Details

The Yxy color **57.2540, 0.3958, 0.3524** is a light color, and the websafe version is hex **FF9999**. A complement of this color would be **72.9319, 0.2569, 0.3039**, and the grayscale version is **58.7227, 0.3127, 0.3290**.

A 20% lighter version of the original color is **87.3154, 0.3389, 0.3519**, and **28.5190, 0.4177, 0.3575** is the 20% darker color. If you saturate the color by 10%, you get **48.9853, 0.4286, 0.3585**, and if you desaturate by 10%, it is **66.8328, 0.3678, 0.3459**.

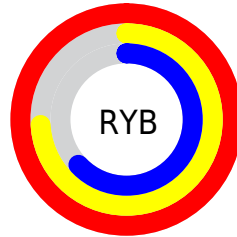
Distribution



Red (100%)

Green (71%)

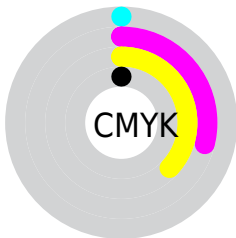
Blue (63%)



Red (100%)

Yellow (74%)

Blue (63%)

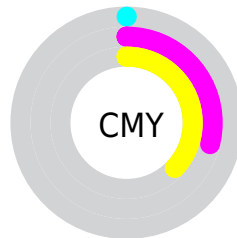


Cyan (0%)

Magenta (29%)

Yellow (37%)

Black (0%)



Cyan (0%)


Magenta (29%)

Yellow (37%)

Brightness & Saturation Gradients


These gradients show how the Yxy color 57.2540, 0.3958, 0.3524 changes by changing the brightness by 10 percent. The first figure shows a shift by +10% for each color and the second figure -10%.

Similar to the brightness gradients but the following saturation gradients show a change of the Yxy color 57.2540, 0.3958, 0.3524 by changing the saturation by 10% instead.


 57.2540, 0.3958,
0.3524


 57.2540, 0.3958,
0.3524


414.4004, 0.3553,
0.3425

 41.2092, 0.4055,
0.3543


 100.8357, 0.3814,
0.3492

 28.4826, 0.4177,
0.3565


 129.1414, 0.3759,
0.3479

 18.6898, 0.4335,
0.3590


162.3029, 0.3712,
0.3467

 11.4463, 0.4546,
0.3615

200.7045, 0.3671,
0.3457

 6.3679, 0.4841,
0.3635

244.7307, 0.3636,
0.3448

 3.0700, 0.5272,
0.3630

294.7658, 0.3605,

 1.1684, 0.6271,

0.3439

0.3729

351.1942, 0.3578,
0.3432

0.0357, 0.9451,
0.0549

0.0000, 0.0000,
0.0000

57.2540, 0.3958,
0.3524

57.2540, 0.3958,
0.3524

48.9853, 0.4286,
0.3585

66.8328, 0.3678,
0.3459

41.9608, 0.4658,
0.3634

77.7673, 0.3443,
0.3394

36.1214, 0.5060,
0.3661

90.1111, 0.3248,
0.3332

31.3995, 0.5461,
0.3655

99.9955, 0.3127,
0.3290

■ 27.7201, 0.5818,
0.3610

■ 24.9974, 0.6085,
0.3527

■ 24.3995, 0.6145,
0.3503

Harmonies

Analogous

The Analogous color harmony consists of three colors that are next to each other on the color wheel.



57.2540, 0.3767, 0.3184



57.2540, 0.3958, 0.3524



57.2540, 0.3906, 0.3834

Triad

The Triadic color harmony groups three colors that are evenly spaced from another and form a triangle on the color wheel.



57.2540, 0.3958, 0.3524



57.2540, 0.2833, 0.3754



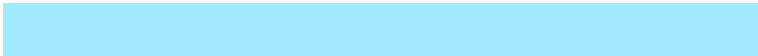
57.2540, 0.2608, 0.2610

Complementary

The Complementary color scheme is a pair of colors which are on the opposite of each other on the color wheel.



57.2540, 0.3958, 0.3524



72.9319, 0.2569, 0.3039

Split Complementary

Split-complementary colors differ from the complementary color scheme. The scheme consists of three colors, the original color and two neighbors of the complement color.



57.2540, 0.2395, 0.2705



57.2540, 0.3958, 0.3524



57.2540, 0.2516, 0.3353

Square

The Square scheme is like the rectangle color scheme, but the four colors are evenly spaced on the color wheel.



57.2540, 0.3958, 0.3524



57.2540, 0.3243, 0.4010



57.2540, 0.2362, 0.2966



57.2540, 0.2967, 0.2678

Rectangle

The Rectangle color scheme consists of four colors that form a rectangle on the color wheel.



57.2540, 0.3958, 0.3524



57.2540, 0.3747, 0.3982



57.2540, 0.2362, 0.2966



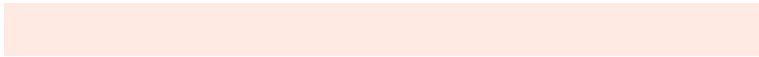
57.2540, 0.2518, 0.2623

Sweetspot

The Sweet Spot groups the original color and five complimentary colors.



57.2567, 0.3958, 0.3524



85.3406, 0.3317, 0.3355



52.3533, 0.3340, 0.2545



17.9057, 0.3343, 0.3363



0.0000, 0.0000, 0.0000



21.4041, 0.3127, 0.3290

Same Dimension

The Same Dimension uses a secret algorithm to generate beautiful new colors.



57.2567, 0.3958, 0.3524



50.7516, 0.4208, 0.3572



79.3130, 0.3781, 0.3981



18.6708, 0.3289, 0.3346



12.9379, 0.6118, 0.3524



1.4174, 0.5905, 0.3693

Inverse Universe

The Inverse Universe completely reimagines the original color for something new.



72.9319, 0.2569, 0.3039



68.5119, 0.2466, 0.2977



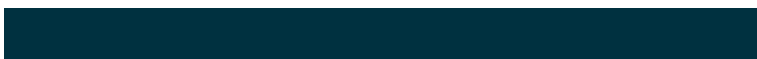
50.1863, 0.2488, 0.2483



19.7248, 0.2980, 0.3234



24.6024, 0.2034, 0.2521



2.5606, 0.2061, 0.2619

Previews

White Background



This preview shows how the Yxy color 57.2540, 0.3958, 0.3524 looks on a white background.

Color Contrast Check

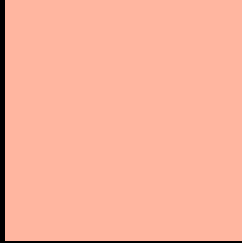
Large Text (above 18pt) WCAG AA × Fail

Any Text WCAG AA × Fail

Large Text (above 18pt) WCAG AAA × Fail

Any Text WCAG AAA × Fail

Black Background



This preview shows how the Yxy color 57.2540, 0.3958, 0.3524 looks on a black background.

Color Contrast Check

Large Text (above 18pt) WCAG AA ✓ Pass

Any Text WCAG AA ✓ Pass

Large Text (above 18pt) WCAG AAA ✓ Pass

Any Text WCAG AAA ✓ Pass

If you want to check with other color combinations, try the [Color Contrast Checker](#).

Yxy 57.2540, 0.3958, 0.3524

Background



This preview shows how black text looks on a background with the Yxy color 57.2540, 0.3958, 0.3524.



This preview shows how white text looks on a background with the Yxy color 57.2540, 0.3958, 0.3524.

Color Blindness Simulation

Color vision deficiency is a very complex topic, and I could not describe the different causes any better than Wikipedia does, so if you want to learn more, you should check out their [article about color blindness](#).

Dichromacy



Original Color

57.2540, 0.3958, 0.3524

Protanopia

57.3756, 0.3450, 0.3661

Deuteranopia

57.4915, 0.3747, 0.3674



Tritanopia

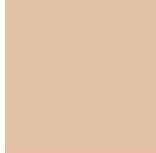
57.3060, 0.3683, 0.3156

Trichromacy



Original Color

57.2540, 0.3958, 0.3524



Protanomaly

57.0253, 0.3626, 0.3613



Deuteranomaly

57.1704, 0.3822, 0.3611



Tritanomaly

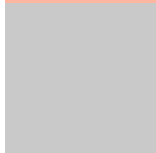
57.1978, 0.3787, 0.3292

Monochromacy



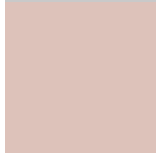
Original Color

57.2540, 0.3958, 0.3524



Achromatopsia

58.4078, 0.3127, 0.3290



Achromatomaly

57.5009, 0.3411, 0.3383

CSS Examples

Text

The CSS property to change the color of the text to Yxy 57.2540, 0.3958, 0.3524 is called "color". The color property can be set on classes, ids or directly on the HTML element.

This example shows how text in the color `rgb(255, 182, 160)` looks like.

```
.text, #text, p{  
    color:rgb(255, 182, 160)  
}
```

If you want to add a text shadow in that color use the text-shadow property, you can generate a text shadow directly with our [CSS Text Shadow Generator](#).

Here you see how black text with a 4 pixel rgb(255, 182, 160) colored shadow looks like.

```
.shadow{ text-shadow: 4px 4px 2px rgb(255, 182, 160) }
```

Border

The CSS property to change the border of an element to Yxy 57.2540, 0.3958, 0.3524 is called "border". The border property can be set on classes, ids or directly on the HTML element.

This example shows the color as border, it can be applied via the CSS property "border" or "border-color".

```
.border, #border, table{ border:4px solid rgb(255, 182, 160) }
```

If only the border color should be changed use the property `border-color`.

```
.border{ border-color:rgb(255, 182, 160) }
```

If you want to add a box shadow in that color use:

Here you see how a box with a 4 pixel `rgb(255, 182, 160)` colored shadow looks like.

```
.boxshadow{ -moz-box-shadow:4px 4px 4px  
4px rgb(255, 182, 160); -webkit-box-  
shadow:4px 4px 4px 4px rgb(255, 182, 160);  
box-shadow:4px 4px 4px 4px rgb(255, 182,  
160) }
```


Background

The CSS property to change the background color of an element to Yxy 57.2540, 0.3958, 0.3524 is called "background". The background property can be set on classes, ids or directly on the HTML element.

```
.background, #background, body{  
background: rgb(255, 182, 160) }
```

If only the background color should be changed can be used:

```
.background{ background-color: rgb(255,  
182, 160) }
```

This example shows the color as background, it is applied via the CSS property "background".

To optimize and compress your CSS code, you can use our [online CSS compressor and optimizer](#) based on csstidy. If you want to create a linear or radial gradient as background or border, check our [CSS Gradient Generator](#).

Hey! You found this booklet interesting? Support Converting Colors with the new Membership Option!

The pro membership hides all ads, plus gives you double the colors in the color bucket, and more awesome pro features!

[Learn more, Memberships starting at \\$2.50/m!](#)

**Follow me
on Twitter!**

@ConvertingColor