

Converting Colors

$Yxy(61.7074, 0.3380, 0.3334)$

Have a look what the booklet for
Yxy(61.7074, 0.3380, 0.3334)
contains.

Yxy(61.7881, 0.3380, 0.3335)	3
<i>Conversions</i>	4
<i>Details</i>	6
<i>Harmonies</i>	12
<i>Previews</i>	24
<i>Color Blindness Simulation</i>	27
<i>CSS Examples</i>	30

Color

Yxy(61.7881, 0.3380, 0.3335)

Conversions

Conversions Part 1

Format	Color
Hex	E4C8C4
RGB	228, 200, 196
RGB Percent	89%, 78%, 77%
CMY	0.1058, 0.2157, 0.2313
CMYK	0.00, 0.12, 0.14, 0.11
HSL	7°, 37%, 83%
HSV	7°, 14%, 89%
XYZ	62.6218, 61.7881, 60.8617
YIQ	207.9160, 17.9720, 4.6920

Conversions

Conversions Part 2

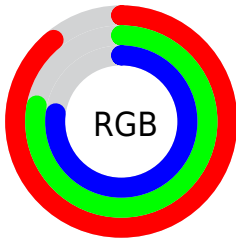
Format	Color
R _Y B	228, 201, 196
Decimal	14993604
CIE Lab	82.80, 9.21, 5.60
CIE LCh	83, 10.779, 31.278
Yxy	61.7881, 0.3380, 0.3335
Android (android.graphics.Color)	4293183684 (0xFFE4C8C4)
YUV	207.9160, -5.8746, 17.6137
Hunter-Lab	78.6054, 4.6444, 9.1174

Details

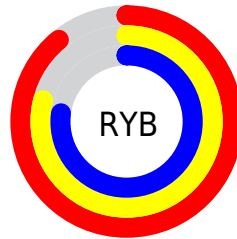
The Yxy color **61.7881, 0.3380, 0.3335** is a light color, and the websafe version is hex **FFCCCC**. A complement of this color would be **70.6843, 0.2912, 0.3245**, and the grayscale version is **63.0535, 0.3127, 0.3290**.

A 20% lighter version of the original color is **99.8718, 0.3139, 0.3309**, and **31.2814, 0.3445, 0.3350** is the 20% darker color. If you saturate the color by 10%, you get **52.1752, 0.3610, 0.3370**, and if you desaturate by 10%, it is **72.7729, 0.3193, 0.3302**.

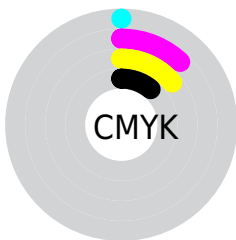
Distribution



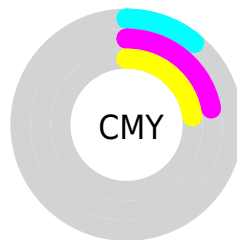
- Red (89%)
- Green (78%)
- Blue (77%)



- Red (89%)
- Yellow (79%)
- Blue (77%)



- Cyan (0%)
- Magenta (12%)
- Yellow (14%)
- Black (11%)





- Cyan (11%)
- Magenta (22%)
- Yellow (23%)

Brightness & Saturation Gradients


These gradients show how the Yxy color 61.7881, 0.3380, 0.3335 changes by changing the brightness by 10 percent. The first figure shows a shift by +10% for each color and the second figure -10%.

Similar to the brightness gradients but the following saturation gradients show a change of the Yxy color 61.7881, 0.3380, 0.3335 by changing the saturation by 10% instead.

 61.7881, 0.3380,
0.3335

 61.7881, 0.3380,
0.3335


431.1577, 0.3259,
0.3315

 44.8615, 0.3409,
0.3339


107.4192, 0.3337,
0.3328

 31.3483, 0.3445,
0.3345


136.8925, 0.3321,
0.3325

 20.8643, 0.3492,
0.3352


171.3169, 0.3307,
0.3323

 13.0248, 0.3555,
0.3360

211.0766, 0.3294,
0.3321

 7.4456, 0.3644,
0.3371

256.5562, 0.3284,
0.3319

 3.7423, 0.3779,
0.3385

308.1400, 0.3275,

 1.5305, 0.4009,

0.3318

366.2123, 0.3266,
0.3316

0.3403

0.3100, 0.6263,
0.3737

0.0000, 0.0000,
0.0000

61.7881, 0.3380,
0.3335

61.7881, 0.3380,
0.3335

52.1752, 0.3610,
0.3370

72.7729, 0.3193,
0.3302

43.8723, 0.3890,
0.3405

85.1720, 0.3040,
0.3272

36.8250, 0.4226,
0.3438

95.2390, 0.2964,
0.3290

30.9721, 0.4619,
0.3466

■ 26.2471, 0.5054,
0.3482

■ 22.5768, 0.5498,
0.3479

■ 19.8796, 0.5897,
0.3452

■ 18.0613, 0.6190,
0.3404

■ 17.3438, 0.6308,
0.3374

Harmonies

Analogous

The Analogous color harmony consists of three colors that are next to each other on the color wheel.



61.7881, 0.3295, 0.3217



61.7881, 0.3380, 0.3335



61.7881, 0.3395, 0.3445

Triad

The Triadic color harmony groups three colors that are evenly spaced from another and form a triangle on the color wheel.



61.7881, 0.3380, 0.3335



61.7881, 0.3084, 0.3471



61.7881, 0.2920, 0.3067

Complementary

The Complementary color scheme is a pair of colors which are on the opposite of each other on the color wheel.



61.7881, 0.3380, 0.3335



70.6843, 0.2912, 0.3245

Split Complementary

Split-complementary colors differ from the complementary color scheme. The scheme consists of three colors, the original color and two neighbors of the complement color.



61.7881, 0.2866, 0.3128



61.7881, 0.3380, 0.3335



61.7881, 0.2960, 0.3363

Square

The Square scheme is like the rectangle color scheme, but the four colors are evenly spaced on the color wheel.



61.7881, 0.3380, 0.3335



61.7881, 0.3222, 0.3527



61.7881, 0.2881, 0.3236



61.7881, 0.3029, 0.3064

Rectangle

The Rectangle color scheme consists of four colors that form a rectangle on the color wheel.



61.7881, 0.3380, 0.3335



61.7881, 0.3363, 0.3498



61.7881, 0.2881, 0.3236



61.7881, 0.2895, 0.3081

Sweetspot

The Sweet Spot groups the original color and five complimentary colors.



61.7909, 0.3380, 0.3335



93.7920, 0.3192, 0.3302



61.3861, 0.3171, 0.2983



19.8325, 0.3205, 0.3305



0.0000, 0.0000, 0.0000



21.4041, 0.3127, 0.3290

Same Dimension

The Same Dimension uses a secret algorithm to generate beautiful new colors.



61.7909, 0.3380, 0.3335



75.6369, 0.3446, 0.3345



69.4744, 0.3355, 0.3507



14.6547, 0.3289, 0.3320



10.1039, 0.6291, 0.3387



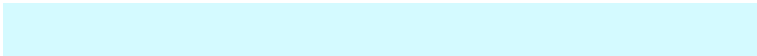
0.8412, 0.6071, 0.3562

Inverse Universe

The Inverse Universe completely reimagines the original color for something new.



70.6843, 0.2912, 0.3245



89.3005, 0.2867, 0.3234



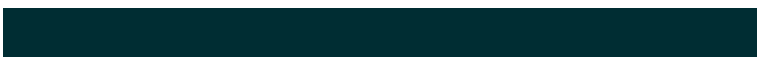
62.5955, 0.2907, 0.3063



16.0150, 0.2982, 0.3260



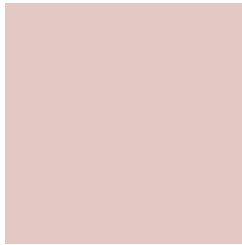
27.1283, 0.2137, 0.2894



2.0908, 0.2155, 0.2957

Previews

White Background



This preview shows how the Yxy color 61.7881, 0.3380, 0.3335 looks on a white background.

Color Contrast Check

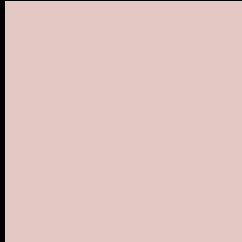
Large Text (above 18pt) WCAG AA × Fail

Any Text WCAG AA × Fail

Large Text (above 18pt) WCAG AAA × Fail

Any Text WCAG AAA × Fail

Black Background



This preview shows how the Yxy color 61.7881, 0.3380, 0.3335 looks on a black background.

Color Contrast Check

Large Text (above 18pt) WCAG AA ✓ Pass

Any Text WCAG AA ✓ Pass

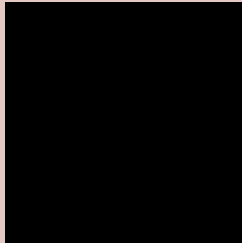
Large Text (above 18pt) WCAG AAA ✓ Pass

Any Text WCAG AAA ✓ Pass

If you want to check with other color combinations, try the [Color Contrast Checker](#).

Yxy 61.7881, 0.3380, 0.3335

Background



This preview shows how black text looks on a background with the Yxy color 61.7881, 0.3380, 0.3335.

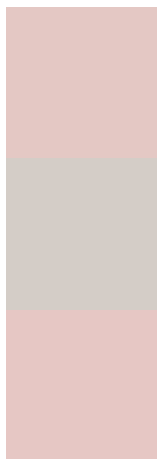


This preview shows how white text looks on a background with the Yxy color 61.7881, 0.3380, 0.3335.

Color Blindness Simulation

Color vision deficiency is a very complex topic, and I could not describe the different causes any better than Wikipedia does, so if you want to learn more, you should check out their [article about color blindness](#).

Dichromacy



Original Color

61.7881, 0.3380, 0.3335

Protanopia

61.7832, 0.3224, 0.3359

Deuteranopia

61.6554, 0.3398, 0.3324



Tritanopia

61.5596, 0.3270, 0.3115

Trichromacy



Original Color

61.7881, 0.3380, 0.3335

Protanomaly

61.6945, 0.3281, 0.3347

Deuteranomaly

61.4904, 0.3390, 0.3324

Tritanomaly

61.5512, 0.3306, 0.3191

Monochromacy



Original Color

61.7881, 0.3380, 0.3335

Achromatopsia

63.0757, 0.3127, 0.3290

Achromatomaly

62.4693, 0.3211, 0.3302

CSS Examples

Text

The CSS property to change the color of the text to Yxy 61.7881, 0.3380, 0.3335 is called "color". The color property can be set on classes, ids or directly on the HTML element.

This example shows how text in the color `rgb(228, 200, 196)` looks like.

```
.text, #text, p{  
    color:rgb(228, 200, 196)  
}
```

If you want to add a text shadow in that color use the text-shadow property, you can generate a text shadow directly with our [CSS Text Shadow Generator](#).

Here you see how black text with a 4 pixel rgb(228, 200, 196) colored shadow looks like.

```
.shadow{ text-shadow: 4px 4px 2px rgb(228, 200, 196) }
```

Border

The CSS property to change the border of an element to Yxy 61.7881, 0.3380, 0.3335 is called "border". The border property can be set on classes, ids or directly on the HTML element.

This example shows the color as border, it can be applied via the CSS property "border" or "border-color".

```
.border, #border, table{ border:4px solid rgb(228, 200, 196) }
```

If only the border color should be changed use the property `border-color`.

```
.border{ border-color:rgb(228, 200, 196) }
```

If you want to add a box shadow in that color use:

Here you see how a box with a 4 pixel `rgb(228, 200, 196)` colored shadow looks like.

```
.boxshadow{ -moz-box-shadow:4px 4px 4px  
4px rgb(228, 200, 196); -webkit-box-  
shadow:4px 4px 4px 4px rgb(228, 200, 196);  
box-shadow:4px 4px 4px 4px rgb(228, 200,  
196) }
```


Background

The CSS property to change the background color of an element to Yxy 61.7881, 0.3380, 0.3335 is called "background". The background property can be set on classes, ids or directly on the HTML element.

```
.background, #background, body{  
background: rgb(228, 200, 196) }
```

If only the background color should be changed can be used:

```
.background{ background-color: rgb(228,  
200, 196) }
```

This example shows the color as background, it is applied via the CSS property "background".

To optimize and compress your CSS code, you can use our [online CSS compressor and optimizer](#) based on csstidy. If you want to create a linear or radial gradient as background or border, check our [CSS Gradient Generator](#).

Hey! You found this booklet interesting? Support Converting Colors with the new Membership Option!

The pro membership hides all ads, plus gives you double the colors in the color bucket, and more awesome pro features!

[Learn more, Memberships starting at \\$2.50/m!](#)

**Follow me
on Twitter!**

@ConvertingColor