

Converting Colors

$Yxy(61.7076, 0.3280, 0.3285)$

Have a look what the booklet for
Yxy(61.7076, 0.3280, 0.3285)
contains.

Yxy(61.4097, 0.3277, 0.3279)	3
<i>Conversions</i>	4
<i>Details</i>	6
<i>Harmonies</i>	12
<i>Previews</i>	24
<i>Color Blindness Simulation</i>	27
<i>CSS Examples</i>	30

Color

Yxy(61.4097, 0.3277, 0.3279)

Conversions

Conversions Part 1

Format	Color
Hex	DDC9CA
RGB	221, 201, 202
RGB Percent	87%, 79%, 79%
CMY	0.1332, 0.2118, 0.2078
CMYK	0.00, 0.09, 0.09, 0.13
HSL	357°, 23%, 83%
HSV	357°, 9%, 87%
XYZ	61.3722, 61.4097, 64.4998
YIQ	207.0940, 11.5990, 4.5510

Conversions

Conversions Part 2

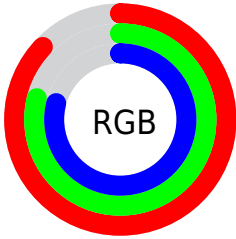
Format	Color
R _{YB}	221, 201, 202
Decimal	14535114
CIE Lab	82.60, 7.17, 2.03
CIE LCh	83, 7.451, 15.796
Yxy	61.4097, 0.3277, 0.3279
Android (android.graphics.Color)	4292725194 (0xFFDDC9CA)
YUV	207.0940, -2.5113, 12.1956
Hunter-Lab	78.3643, 2.6574, 6.0548

Details

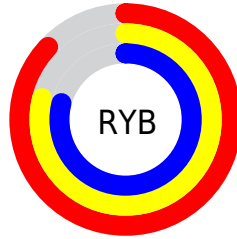
The Yxy color **61.4097, 0.3277, 0.3279** is a light color, and the websafe version is hex **CCCCCC**. A complement of this color would be **69.3114, 0.2994, 0.3301**, and the grayscale version is **62.4749, 0.3127, 0.3290**.

A 20% lighter version of the original color is **100.0000, 0.3127, 0.3290**, and **31.1125, 0.3317, 0.3276** is the 20% darker color. If you saturate the color by 10%, you get **50.9109, 0.3482, 0.3266**, and if you desaturate by 10%, it is **73.5318, 0.3113, 0.3291**.

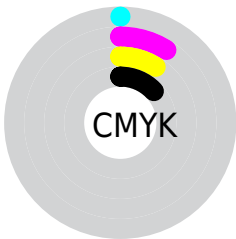
Distribution



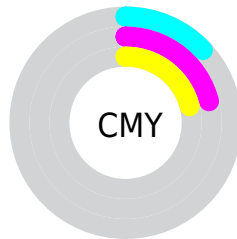
- Red (87%)
- Green (79%)
- Blue (79%)



- Red (87%)
- Yellow (79%)
- Blue (79%)



- Cyan (0%)
- Magenta (9%)
- Yellow (9%)
- Black (13%)



- Cyan (13%)
- Magenta (21%)
- Yellow (21%)

Brightness & Saturation Gradients

These gradients show how the Yxy color 61.4097, 0.3277, 0.3279 changes by changing the brightness by 10 percent. The first figure shows a shift by +10% for each color and the second figure -10%.

Similar to the brightness gradients but the following saturation gradients show a change of the Yxy color 61.4097, 0.3277, 0.3279 by changing the saturation by 10% instead.

61.4097, 0.3277,
0.3279

61.4097, 0.3277,
0.3279

429.7746, 0.3205,
0.3285

44.5559, 0.3294,
0.3278

106.8719, 0.3252,
0.3281

31.1078, 0.3315,
0.3276

136.2491, 0.3242,
0.3282

20.6809, 0.3343,
0.3273

170.5696, 0.3234,
0.3283

12.8910, 0.3380,
0.3270

210.2177, 0.3226,
0.3283

7.3535, 0.3433,
0.3265

255.5779, 0.3220,
0.3284

3.6842, 0.3513,
0.3256

307.0345, 0.3215,

1.4985, 0.3649,

0.3284

0.3240

364.9719, 0.3210,
0.3284

0.2877, 0.4941,
0.3170

0.0000, 0.0000,
0.0000

61.4097, 0.3277,
0.3279

61.4097, 0.3277,
0.3279

50.9109, 0.3482,
0.3266

73.5318, 0.3113,
0.3291

41.9588, 0.3737,
0.3253

87.3334, 0.2982,
0.3302

34.4829, 0.4051,
0.3240

94.1161, 0.2923,
0.3289

28.4038, 0.4430,
0.3229

■ 23.6349, 0.4866,
0.3223

■ 20.0797, 0.5334,
0.3224

■ 17.6288, 0.5780,
0.3234

■ 16.1529, 0.6134,
0.3254

■ 15.4506, 0.6344,
0.3276

Harmonies

Analogous

The Analogous color harmony consists of three colors that are next to each other on the color wheel.



61.4097, 0.3200, 0.3201



61.4097, 0.3277, 0.3279



61.4097, 0.3313, 0.3361

Triad

The Triadic color harmony groups three colors that are evenly spaced from another and form a triangle on the color wheel.



61.4097, 0.3277, 0.3279



61.4097, 0.3148, 0.3440



61.4097, 0.2958, 0.3153

Complementary

The Complementary color scheme is a pair of colors which are on the opposite of each other on the color wheel.



61.4097, 0.3277, 0.3279



69.3114, 0.2994, 0.3301

Split Complementary

Split-complementary colors differ from the complementary color scheme. The scheme consists of three colors, the original color and two neighbors of the complement color.



61.4097, 0.2945, 0.3215



61.4097, 0.3277, 0.3279



61.4097, 0.3053, 0.3382

Square

The Square scheme is like the rectangle color scheme, but the four colors are evenly spaced on the color wheel.



61.4097, 0.3277, 0.3279



61.4097, 0.3238, 0.3456



61.4097, 0.2979, 0.3299



61.4097, 0.3016, 0.3128

Rectangle

The Rectangle color scheme consists of four colors that form a rectangle on the color wheel.



61.4097, 0.3277, 0.3279



61.4097, 0.3309, 0.3408



61.4097, 0.2979, 0.3299



61.4097, 0.2948, 0.3170

Sweetspot

The Sweet Spot groups the original color and five complimentary colors.



61.4124, 0.3277, 0.3279



94.7568, 0.3174, 0.3286



62.1608, 0.3127, 0.3068



19.9895, 0.3187, 0.3285



0.0000, 0.0000, 0.0000



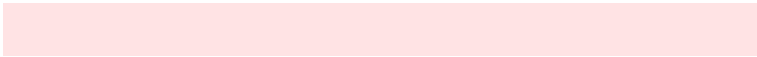
21.4041, 0.3127, 0.3290

Same Dimension

The Same Dimension uses a secret algorithm to generate beautiful new colors.



61.4124, 0.3277, 0.3279



81.7927, 0.3315, 0.3276



65.5262, 0.3274, 0.3388



13.0621, 0.3284, 0.3279



8.9491, 0.6343, 0.3268



0.5836, 0.6175, 0.3175

Inverse Universe

The Inverse Universe completely reimagines the original color for something new.



61.4124, 0.3277, 0.3279



81.7927, 0.3315, 0.3276



64.8991, 0.2987, 0.3190



13.0621, 0.3284, 0.3279



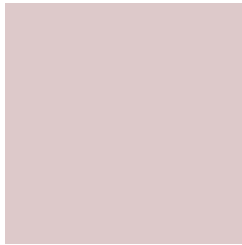
8.9491, 0.6343, 0.3268



0.5836, 0.6175, 0.3175

Previews

White Background



This preview shows how the Yxy color 61.4097, 0.3277, 0.3279 looks on a white background.

Color Contrast Check

Large Text (above 18pt) WCAG AA × Fail

Any Text WCAG AA × Fail

Large Text (above 18pt) WCAG AAA × Fail

Any Text WCAG AAA × Fail

Black Background



This preview shows how the Yxy color 61.4097, 0.3277, 0.3279 looks on a black background.

Color Contrast Check

Large Text (above 18pt) WCAG AA ✓ Pass

Any Text WCAG AA ✓ Pass

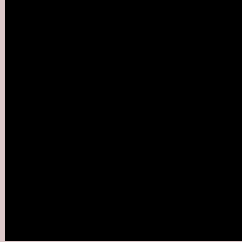
Large Text (above 18pt) WCAG AAA ✓ Pass

Any Text WCAG AAA ✓ Pass

If you want to check with other color combinations, try the [Color Contrast Checker](#).

Yxy 61.4097, 0.3277, 0.3279

Background



This preview shows how black text looks on a background with the Yxy color 61.4097, 0.3277, 0.3279.



This preview shows how white text looks on a background with the Yxy color 61.4097, 0.3277, 0.3279.

Color Blindness Simulation

Color vision deficiency is a very complex topic, and I could not describe the different causes any better than Wikipedia does, so if you want to learn more, you should check out their [article about color blindness](#).

Dichromacy



Original Color

61.4097, 0.3277, 0.3279

Protanopia

61.7239, 0.3172, 0.3302

Deuteranopia

61.4420, 0.3327, 0.3257



Tritanopia

61.4411, 0.3198, 0.3113

Trichromacy



Original Color

61.4097, 0.3277, 0.3279

Protanomaly

61.7937, 0.3211, 0.3302

Deuteranomaly

61.5804, 0.3310, 0.3268

Tritanomaly

61.4913, 0.3226, 0.3179

Monochromacy



Original Color

61.4097, 0.3277, 0.3279

Achromatopsia

62.3960, 0.3127, 0.3290

Achromatomaly

62.0675, 0.3181, 0.3290

CSS Examples

Text

The CSS property to change the color of the text to Yxy 61.4097, 0.3277, 0.3279 is called "color". The color property can be set on classes, ids or directly on the HTML element.

This example shows how text in the color `rgb(221, 201, 202)` looks like.

```
.text, #text, p{  
    color:rgb(221, 201, 202)  
}
```

If you want to add a text shadow in that color use the text-shadow property, you can generate a text shadow directly with our [CSS Text Shadow Generator](#).

Here you see how black text with a 4 pixel rgb(221, 201, 202) colored shadow looks like.

```
.shadow{ text-shadow: 4px 4px 2px rgb(221, 201, 202) }
```

Border

The CSS property to change the border of an element to Yxy 61.4097, 0.3277, 0.3279 is called "border". The border property can be set on classes, ids or directly on the HTML element.

This example shows the color as border, it can be applied via the CSS property "border" or "border-color".

```
.border, #border, table{ border:4px solid rgb(221, 201, 202) }
```

If only the border color should be changed use the property border-color.

```
.border{ border-color:rgb(221, 201, 202) }
```

If you want to add a box shadow in that color use:

Here you see how a box with a 4 pixel rgb(221, 201, 202) colored shadow looks like.

```
.boxshadow{ -moz-box-shadow:4px 4px 4px  
4px rgb(221, 201, 202); -webkit-box-  
shadow:4px 4px 4px 4px rgb(221, 201, 202);  
box-shadow:4px 4px 4px 4px rgb(221, 201,  
202) }
```


Background

The CSS property to change the background color of an element to Yxy 61.4097, 0.3277, 0.3279 is called "background". The background property can be set on classes, ids or directly on the HTML element.

```
.background, #background, body{  
background: rgb(221, 201, 202) }
```

If only the background color should be changed can be used:

```
.background{ background-color: rgb(221,  
201, 202) }
```

This example shows the color as background, it is applied via the CSS property "background".

To optimize and compress your CSS code, you can use our [online CSS compressor and optimizer](#) based on csstidy. If you want to create a linear or radial gradient as background or border, check our [CSS Gradient Generator](#).

Hey! You found this booklet interesting? Support Converting Colors with the new Membership Option!

The pro membership hides all ads, plus gives you double the colors in the color bucket, and more awesome pro features!

[Learn more, Memberships starting at \\$2.50/m!](#)

**Follow me
on Twitter!**

@ConvertingColor