

Converting Colors

Yxy(61.7718, 0.3369, 0.3408)

Have a look what the booklet for
Yxy(61.7718, 0.3369, 0.3408)
contains.

| | |
|---|----|
| Yxy(61.7348, 0.3367, 0.3404) | 3 |
| Conversions | 4 |
| Details | 6 |
| Harmonies | 12 |
| Previews | 24 |
| Color Blindness Simulation | 27 |
| CSS Examples | 30 |

Color

Yxy(61.7348, 0.3367, 0.3404)

Conversions

Conversions Part 1

| Format | Color |
|---------------|---------------------------|
| Hex | DFCAC0 |
| RGB | 223, 202, 192 |
| RGB Percent | 87%, 79%, 75% |
| CMY | 0.1255, 0.2078, 0.2471 |
| CMYK | 0.00, 0.09, 0.14, 0.13 |
| HSL | 19°, 33%, 81% |
| HSV | 19°, 14%, 87% |
| XYZ | 61.0638, 61.7348, 58.5610 |
| YIQ | 207.1390, 15.7260, 1.3420 |

Conversions

Conversions Part 2

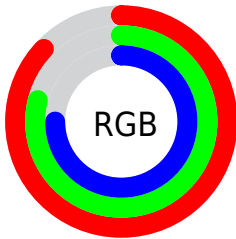
| Format | Color |
|-------------------------------------|-------------------------------|
| R _Y B | 223, 207, 192 |
| Decimal | 14666432 |
| CIE Lab | 82.77, 5.70, 7.65 |
| CIE LCh | 83, 9.537, 53.330 |
| Yxy | 61.7348, 0.3367, 0.3404 |
| Android (android.graphics.Color) | 4292856512 (0xFFDFCAC0) |
| YUV | 207.1390, -7.4635, 13.9101 |
| Hunter-Lab | 78.5715, 1.2255, 10.8099 |

Details

The Yxy color **61.7348, 0.3367, 0.3404** is a light color, and the websafe version is hex **CCCCCC**. A complement of this color would be **64.1091, 0.2913, 0.3173**, and the grayscale version is **62.5332, 0.3127, 0.3290**.

A 20% lighter version of the original color is **99.5573, 0.3168, 0.3357**, and **31.3687, 0.3428, 0.3425** is the 20% darker color. If you saturate the color by 10%, you get **54.0821, 0.3577, 0.3492**, and if you desaturate by 10%, it is **70.2356, 0.3189, 0.3321**.

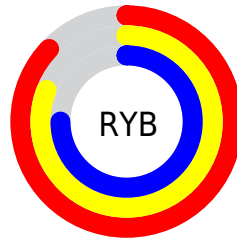
Distribution



Red (87%)

Green (79%)

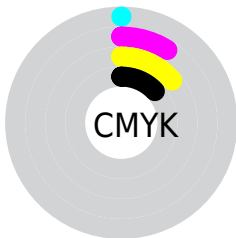
Blue (75%)



Red (87%)

Yellow (81%)

Blue (75%)

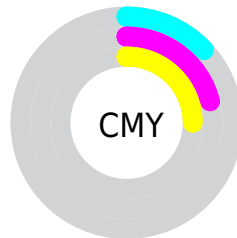


Cyan (0%)

Magenta (9%)

Yellow (14%)

Black (13%)



Cyan (13%)


Magenta (21%)

Yellow (25%)

Brightness & Saturation Gradients


These gradients show how the Yxy color 61.7348, 0.3367, 0.3404 changes by changing the brightness by 10 percent. The first figure shows a shift by +10% for each color and the second figure -10%.

Similar to the brightness gradients but the following saturation gradients show a change of the Yxy color 61.7348, 0.3367, 0.3404 by changing the saturation by 10% instead.


 61.7348, 0.3367,
0.3404

 61.7348, 0.3367,
0.3404


430.9631, 0.3252,
0.3351

 44.8184, 0.3394,
0.3416


 107.3422, 0.3326,
0.3385

 31.3144, 0.3429,
0.3432


136.8019, 0.3311,
0.3378

 20.8384, 0.3473,
0.3451


171.2117, 0.3297,
0.3372

 13.0059, 0.3532,
0.3477

210.9557, 0.3286,
0.3367

 7.4326, 0.3616,
0.3512

256.4185, 0.3276,
0.3362

 3.7341, 0.3744,
0.3562

307.9844, 0.3267,

 1.5260, 0.3960,

0.3358

0.3641

366.0378, 0.3259,
0.3354

0.3069, 0.5839,
0.4161

0.0000, 0.0000,
0.0000

61.7348, 0.3367,
0.3404

61.7348, 0.3367,
0.3404

54.0821, 0.3577,
0.3492

70.2356, 0.3189,
0.3321

47.2428, 0.3824,
0.3581

79.6014, 0.3038,
0.3244

41.1917, 0.4110,
0.3668

89.6063, 0.2933,
0.3211

35.8991, 0.4432,
0.3745

94.4269, 0.2935,
0.3289

■ 31.3335, 0.4784,
0.3802

■ 27.4607, 0.5145,
0.3826

■ 24.2437, 0.5488,
0.3806

■ 21.6408, 0.5778,
0.3736

■ 20.3286, 0.5925,
0.3678

Harmonies

Analogous

The Analogous color harmony consists of three colors that are next to each other on the color wheel.



61.7348, 0.3336, 0.3302



61.7348, 0.3367, 0.3404



61.7348, 0.3332, 0.3478

Triad

The Triadic color harmony groups three colors that are evenly spaced from another and form a triangle on the color wheel.



61.7348, 0.3367, 0.3404



61.7348, 0.3005, 0.3383



61.7348, 0.3011, 0.3085

Complementary

The Complementary color scheme is a pair of colors which are on the opposite of each other on the color wheel.



61.7348, 0.3367, 0.3404



64.1091, 0.2913, 0.3173

Split Complementary

Split-complementary colors differ from the complementary color scheme. The scheme consists of three colors, the original color and two neighbors of the complement color.



61.7348, 0.2925, 0.3102



61.7348, 0.3367, 0.3404



61.7348, 0.2922, 0.3272

Square

The Square scheme is like the rectangle color scheme, but the four colors are evenly spaced on the color wheel.



61.7348, 0.3367, 0.3404



61.7348, 0.3122, 0.3468



61.7348, 0.2893, 0.3169



61.7348, 0.3129, 0.3121

Rectangle

The Rectangle color scheme consists of four colors that form a rectangle on the color wheel.



61.7348, 0.3367, 0.3404



61.7348, 0.3276, 0.3501



61.7348, 0.2893, 0.3169



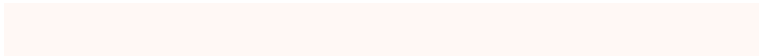
61.7348, 0.2977, 0.3085

Sweetspot

The Sweet Spot groups the original color and five complimentary colors.



61.7375, 0.3367, 0.3404



95.0341, 0.3191, 0.3322



58.1955, 0.3217, 0.3054



20.1459, 0.3203, 0.3328



0.0000, 0.0000, 0.0000



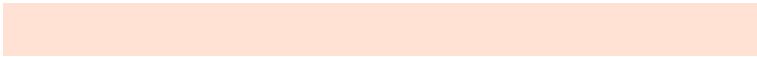
21.4041, 0.3127, 0.3290

Same Dimension

The Same Dimension uses a secret algorithm to generate beautiful new colors.



61.7375, 0.3367, 0.3404



80.2024, 0.3431, 0.3432



69.2778, 0.3343, 0.3572



14.4200, 0.3284, 0.3366



12.1361, 0.5898, 0.3699



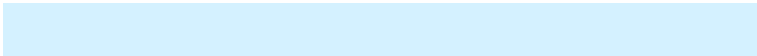
0.9998, 0.5596, 0.3939

Inverse Universe

The Inverse Universe completely reimagines the original color for something new.



64.1091, 0.2913, 0.3173



84.0713, 0.2863, 0.3144



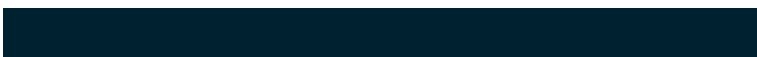
56.7726, 0.2907, 0.2991



14.7866, 0.2982, 0.3212



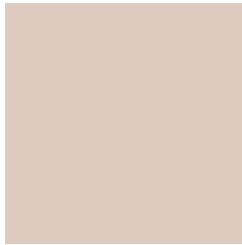
16.3493, 0.1945, 0.2202



1.2935, 0.1997, 0.2390

Previews

White Background



This preview shows how the Yxy color 61.7348, 0.3367, 0.3404 looks on a white background.

Color Contrast Check

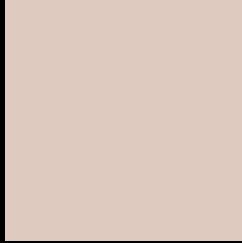
Large Text (above 18pt) WCAG AA × Fail

Any Text WCAG AA × Fail

Large Text (above 18pt) WCAG AAA × Fail

Any Text WCAG AAA × Fail

Black Background



This preview shows how the Yxy color 61.7348, 0.3367, 0.3404 looks on a black background.

Color Contrast Check

Large Text (above 18pt) WCAG AA ✓ Pass

Any Text WCAG AA ✓ Pass

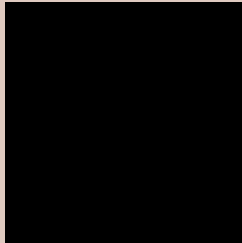
Large Text (above 18pt) WCAG AAA ✓ Pass

Any Text WCAG AAA ✓ Pass

If you want to check with other color combinations, try the [Color Contrast Checker](#).

Yxy 61.7348, 0.3367, 0.3404

Background



This preview shows how black text looks on a background with the Yxy color 61.7348, 0.3367, 0.3404.

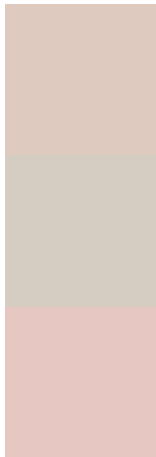


This preview shows how white text looks on a background with the Yxy color 61.7348, 0.3367, 0.3404.

Color Blindness Simulation

Color vision deficiency is a very complex topic, and I could not describe the different causes any better than Wikipedia does, so if you want to learn more, you should check out their [article about color blindness](#).

Dichromacy



Original Color

61.7348, 0.3367, 0.3404

Protanopia

61.7038, 0.3268, 0.3418

Deuteranopia

61.6860, 0.3429, 0.3357



Tritanopia

61.8706, 0.3229, 0.3125

Trichromacy



Original Color

61.7348, 0.3367, 0.3404

Protanomaly

61.7877, 0.3309, 0.3417

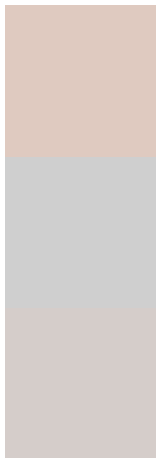
Deuteranomaly

61.6528, 0.3403, 0.3369

Tritanomaly

61.7723, 0.3280, 0.3224

Monochromacy



Original Color

61.7348, 0.3367, 0.3404

Achromatopsia

62.3960, 0.3127, 0.3290

Achromatomaly

62.0730, 0.3210, 0.3325

CSS Examples

Text

The CSS property to change the color of the text to Yxy 61.7348, 0.3367, 0.3404 is called "color". The color property can be set on classes, ids or directly on the HTML element.

This example shows how text in the color `rgb(223, 202, 192)` looks like.

```
.text, #text, p{  
    color:rgb(223, 202, 192)  
}
```

If you want to add a text shadow in that color use the text-shadow property, you can generate a text shadow directly with our [CSS Text Shadow Generator](#).

Here you see how black text with a 4 pixel rgb(223, 202, 192) colored shadow looks like.

```
.shadow{ text-shadow: 4px 4px 2px rgb(223, 202, 192) }
```

Border

The CSS property to change the border of an element to Yxy 61.7348, 0.3367, 0.3404 is called "border". The border property can be set on classes, ids or directly on the HTML element.

This example shows the color as border, it can be applied via the CSS property "border" or "border-color".

```
.border, #border, table{ border:4px solid rgb(223, 202, 192) }
```

If only the border color should be changed use the property `border-color`.

```
.border{ border-color:rgb(223, 202, 192) }
```

If you want to add a box shadow in that color use:

Here you see how a box with a 4 pixel `rgb(223, 202, 192)` colored shadow looks like.

```
.boxshadow{ -moz-box-shadow:4px 4px 4px  
4px rgb(223, 202, 192); -webkit-box-  
shadow:4px 4px 4px 4px rgb(223, 202, 192);  
box-shadow:4px 4px 4px 4px rgb(223, 202,  
192) }
```


Background

The CSS property to change the background color of an element to Yxy 61.7348, 0.3367, 0.3404 is called "background". The background property can be set on classes, ids or directly on the HTML element.

```
.background, #background, body{  
background: rgb(223, 202, 192) }
```

If only the background color should be changed can be used:

```
.background{ background-color: rgb(223,  
202, 192) }
```

This example shows the color as background, it is applied via the CSS property "background".

To optimize and compress your CSS code, you can use our [online CSS compressor and optimizer](#) based on csstidy. If you want to create a linear or radial gradient as background or border, check our [CSS Gradient Generator](#).

Hey! You found this booklet interesting? Support Converting Colors with the new Membership Option!

The pro membership hides all ads, plus gives you double the colors in the color bucket, and more awesome pro features!

[Learn more, Memberships starting at \\$2.50/m!](#)

**Follow me
on Twitter!**

@ConvertingColor