

Converting Colors

Yxy(61.8356, 0.3314, 0.3346)

Have a look what the booklet for
Yxy(61.8356, 0.3314, 0.3346)
contains.

Yxy(61.6444, 0.3313, 0.3347)	3
Conversions	4
Details	6
Harmonies	12
Previews	24
Color Blindness Simulation	27
CSS Examples	30

Color

Yxy(61.6444, 0.3313, 0.3347)

Conversions

Conversions Part 1

Format	Color
Hex	DDCAC5
RGB	221, 202, 197
RGB Percent	87%, 79%, 77%
CMY	0.1333, 0.2078, 0.2274
CMYK	0.00, 0.09, 0.11, 0.13
HSL	12°, 26%, 82%
HSV	12°, 11%, 87%
XYZ	61.0182, 61.6444, 61.5155
YIQ	207.1110, 12.9290, 2.4730

Conversions

Conversions Part 2

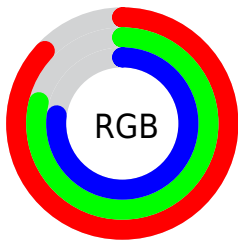
Format	Color
R _Y B	221, 203, 197
Decimal	14535365
CIE Lab	82.72, 5.80, 4.88
CIE LCh	83, 7.575, 40.072
Yxy	61.6444, 0.3313, 0.3347
Android (android.graphics.Color)	4292725445 (0xFFDDCAC5)
YUV	207.1110, -4.9847, 12.1807
Hunter-Lab	78.5139, 1.3243, 8.5062

Details

The Yxy color **61.6444, 0.3313, 0.3347** is a light color, and the websafe version is hex **CCCCCC**. A complement of this color would be **66.2104, 0.2960, 0.3232**, and the grayscale version is **62.5005, 0.3127, 0.3290**.

A 20% lighter version of the original color is **99.9358, 0.3133, 0.3300**, and **31.2700, 0.3366, 0.3365** is the 20% darker color. If you saturate the color by 10%, you get **52.9532, 0.3522, 0.3403**, and if you desaturate by 10%, it is **71.4213, 0.3140, 0.3294**.

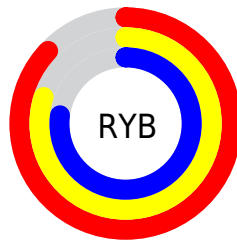
Distribution



Red (87%)

Green (79%)

Blue (77%)



Red (87%)

Yellow (80%)

Blue (77%)

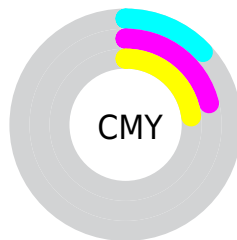


Cyan (0%)

Magenta (9%)

Yellow (11%)

Black (13%)



Cyan (13%)

Magenta (21%)

Yellow (23%)

Brightness & Saturation Gradients

These gradients show how the Yxy color 61.6444, 0.3313, 0.3347 changes by changing the brightness by 10 percent. The first figure shows a shift by +10% for each color and the second figure -10%.

Similar to the brightness gradients but the following saturation gradients show a change of the Yxy color 61.6444, 0.3313, 0.3347 by changing the saturation by 10% instead.

61.6444, 0.3313,
0.3347

61.6444, 0.3313,
0.3347

430.6328, 0.3224,
0.3321

44.7454, 0.3334,
0.3353

107.2114, 0.3282,
0.3338

31.2570, 0.3361,
0.3361

136.6483, 0.3269,
0.3334

20.7946, 0.3395,
0.3370

171.0332, 0.3259,
0.3331

12.9739, 0.3441,
0.3383

210.7506, 0.3250,
0.3328

7.4106, 0.3506,
0.3400

256.1848, 0.3242,
0.3326

3.7202, 0.3606,
0.3424

307.7204, 0.3236,

1.5183, 0.3775,

0.3324

0.3462

365.7416, 0.3229,
0.3322

0.3016, 0.5867,
0.4133

0.0000, 0.0000,
0.0000

61.6444, 0.3313,
0.3347

61.6444, 0.3313,
0.3347

52.9532, 0.3522,
0.3403

71.4213, 0.3140,
0.3294

45.3021, 0.3772,
0.3462

82.3112, 0.2997,
0.3246

38.6542, 0.4071,
0.3519

93.8034, 0.2923,
0.3285

32.9675, 0.4419,
0.3570

94.1119, 0.2923,
0.3289

■ 28.1966, 0.4809,
0.3607

■ 24.2929, 0.5222,
0.3622

■ 21.2025, 0.5620,
0.3603

■ 18.8656, 0.5955,
0.3548

■ 17.3228, 0.6179,
0.3476

Harmonies

Analogous

The Analogous color harmony consists of three colors that are next to each other on the color wheel.



61.6444, 0.3267, 0.3263



61.6444, 0.3313, 0.3347



61.6444, 0.3308, 0.3418

Triad

The Triadic color harmony groups three colors that are evenly spaced from another and form a triangle on the color wheel.



61.6444, 0.3313, 0.3347



61.6444, 0.3070, 0.3397



61.6444, 0.3000, 0.3127

Complementary

The Complementary color scheme is a pair of colors which are on the opposite of each other on the color wheel.



61.6444, 0.3313, 0.3347



66.2104, 0.2960, 0.3232

Split Complementary

Split-complementary colors differ from the complementary color scheme. The scheme consists of three colors, the original color and two neighbors of the complement color.



61.6444, 0.2949, 0.3160



61.6444, 0.3313, 0.3347



61.6444, 0.2989, 0.3316

Square

The Square scheme is like the rectangle color scheme, but the four colors are evenly spaced on the color wheel.



61.6444, 0.3313, 0.3347



61.6444, 0.3167, 0.3449



61.6444, 0.2945, 0.3229



61.6444, 0.3086, 0.3137

Rectangle

The Rectangle color scheme consists of four colors that form a rectangle on the color wheel.



61.6444, 0.3313, 0.3347



61.6444, 0.3277, 0.3448



61.6444, 0.2945, 0.3229



61.6444, 0.2979, 0.3134

Sweetspot

The Sweet Spot groups the original color and five complimentary colors.



61.6471, 0.3313, 0.3347



95.7119, 0.3175, 0.3305



60.2806, 0.3175, 0.3076



20.2461, 0.3188, 0.3310



0.0000, 0.0000, 0.0000



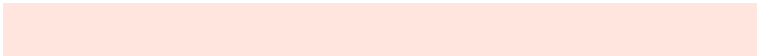
21.4041, 0.3127, 0.3290

Same Dimension

The Same Dimension uses a secret algorithm to generate beautiful new colors.



61.6471, 0.3313, 0.3347



82.4230, 0.3357, 0.3359



67.3978, 0.3298, 0.3478



13.4881, 0.3286, 0.3339



10.1954, 0.6155, 0.3495



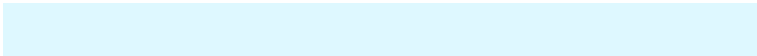
0.7857, 0.5841, 0.3744

Inverse Universe

The Inverse Universe completely reimagines the original color for something new.



66.2104, 0.2960, 0.3232



89.9259, 0.2926, 0.3220



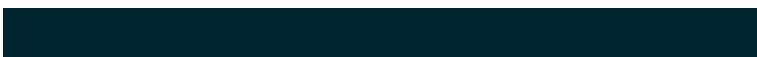
60.3795, 0.2958, 0.3094



14.3458, 0.2982, 0.3240



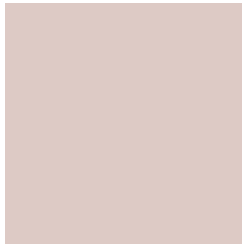
21.0204, 0.2059, 0.2611



1.4798, 0.2093, 0.2734

Previews

White Background



This preview shows how the Yxy color 61.6444, 0.3313, 0.3347 looks on a white background.

Color Contrast Check

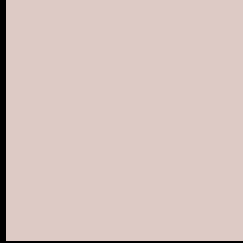
Large Text (above 18pt) WCAG AA × Fail

Any Text WCAG AA × Fail

Large Text (above 18pt) WCAG AAA × Fail

Any Text WCAG AAA × Fail

Black Background



This preview shows how the Yxy color 61.6444, 0.3313, 0.3347 looks on a black background.

Color Contrast Check

Large Text (above 18pt) WCAG AA ✓ Pass

Any Text WCAG AA ✓ Pass

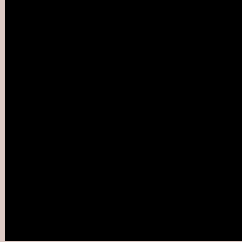
Large Text (above 18pt) WCAG AAA ✓ Pass

Any Text WCAG AAA ✓ Pass

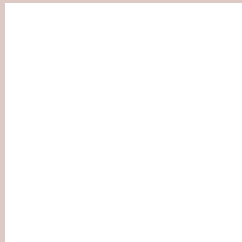
If you want to check with other color combinations, try the [Color Contrast Checker](#).

Yxy 61.6444, 0.3313, 0.3347

Background



This preview shows how black text looks on a background with the Yxy color 61.6444, 0.3313, 0.3347.



This preview shows how white text looks on a background with the Yxy color 61.6444, 0.3313, 0.3347.

Color Blindness Simulation

Color vision deficiency is a very complex topic, and I could not describe the different causes any better than Wikipedia does, so if you want to learn more, you should check out their [article about color blindness](#).

Dichromacy



Original Color

61.6444, 0.3313, 0.3347

Protanopia

61.6350, 0.3216, 0.3360

Deuteranopia

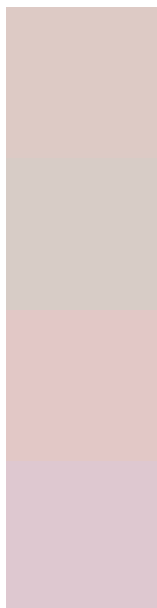
61.5821, 0.3374, 0.3302



Tritanopia

61.4411, 0.3198, 0.3113

Trichromacy



Original Color

61.6444, 0.3313, 0.3347

Protanomaly

61.7100, 0.3256, 0.3359

Deuteranomaly

61.5545, 0.3348, 0.3313

Tritanomaly

61.3922, 0.3241, 0.3201

Monochromacy



Original Color

61.6444, 0.3313, 0.3347

Achromatopsia

62.3960, 0.3127, 0.3290

Achromatomaly

61.9715, 0.3195, 0.3313

CSS Examples

Text

The CSS property to change the color of the text to Yxy 61.6444, 0.3313, 0.3347 is called "color". The color property can be set on classes, ids or directly on the HTML element.

This example shows how text in the color `rgb(221, 202, 197)` looks like.

```
.text, #text, p{  
    color:rgb(221, 202, 197)  
}
```

If you want to add a text shadow in that color use the text-shadow property, you can generate a text shadow directly with our [CSS Text Shadow Generator](#).

Here you see how black text with a 4 pixel rgb(221, 202, 197) colored shadow looks like.

```
.shadow{ text-shadow: 4px 4px 2px rgb(221, 202, 197) }
```

Border

The CSS property to change the border of an element to Yxy 61.6444, 0.3313, 0.3347 is called "border". The border property can be set on classes, ids or directly on the HTML element.

This example shows the color as border, it can be applied via the CSS property "border" or "border-color".

```
.border, #border, table{ border:4px solid rgb(221, 202, 197) }
```

If only the border color should be changed use the property `border-color`.

```
.border{ border-color:rgb(221, 202, 197) }
```

If you want to add a box shadow in that color use:

Here you see how a box with a 4 pixel `rgb(221, 202, 197)` colored shadow looks like.

```
.boxshadow{ -moz-box-shadow:4px 4px 4px  
4px rgb(221, 202, 197); -webkit-box-  
shadow:4px 4px 4px 4px rgb(221, 202, 197);  
box-shadow:4px 4px 4px 4px rgb(221, 202,  
197) }
```


Background

The CSS property to change the background color of an element to Yxy 61.6444, 0.3313, 0.3347 is called "background". The background property can be set on classes, ids or directly on the HTML element.

```
.background, #background, body{  
background: rgb(221, 202, 197) }
```

If only the background color should be changed can be used:

```
.background{ background-color: rgb(221,  
202, 197) }
```

This example shows the color as background, it is applied via the CSS property "background".

To optimize and compress your CSS code, you can use our [online CSS compressor and optimizer](#) based on csstidy. If you want to create a linear or radial gradient as background or border, check our [CSS Gradient Generator](#).

Hey! You found this booklet interesting? Support Converting Colors with the new Membership Option!

The pro membership hides all ads, plus gives you double the colors in the color bucket, and more awesome pro features!

[Learn more, Memberships starting at \\$2.50/m!](#)

**Follow me
on Twitter!**

@ConvertingColor