

# Converting Colors

Yxy(61.8612, 0.3621, 0.3517)

Have a look what the booklet for  
Yxy(61.8612, 0.3621, 0.3517)  
contains.

<b>Yxy(61.9132, 0.3624, 0.3521)</b> .....	3
<b>Conversions</b> .....	4
<b>Details</b> .....	6
<b>Harmonies</b> .....	12
<b>Previews</b> .....	24
<b>Color Blindness Simulation</b> .....	27
<b>CSS Examples</b> .....	30

# Color

**Yxy(61.9132, 0.3624, 0.3521)**

# Conversions

## Conversions Part 1

Format	Color
Hex	EFC6B1
RGB	239, 198, 177
RGB Percent	94%, 78%, 69%
CMY	0.0628, 0.2235, 0.3058
CMYK	0.00, 0.17, 0.26, 0.06
HSL	20°, 66%, 82%
HSV	20°, 26%, 94%
XYZ	63.7244, 61.9132, 50.2023
YIQ	207.8650, 31.1770, 2.1610

# Conversions

## Conversions Part 2

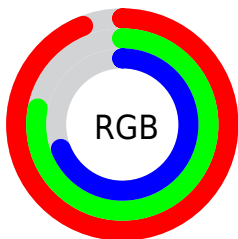
Format	Color
R <sub>Y</sub> B	239, 209, 177
Decimal	15713969
CIE Lab	82.87, 11.46, 15.95
CIE LCh	83, 19.644, 54.300
Yxy	61.9132, 0.3624, 0.3521
Android (android.graphics.Color)	4293904049 (0xFFEFC6B1)
YUV	207.8650, -15.2164, 27.3054
Hunter-Lab	78.6849, 6.8626, 17.2515

# Details

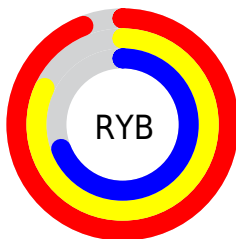
The Yxy color **61.9132, 0.3624, 0.3521** is a light color, and the websafe version is hex **FFCCCC**. A complement of this color would be **65.7263, 0.2725, 0.3046**, and the grayscale version is **63.0717, 0.3127, 0.3290**.

A 20% lighter version of the original color is **98.6632, 0.3256, 0.3503**, and **31.3468, 0.3755, 0.3577** is the 20% darker color. If you saturate the color by 10%, you get **54.1918, 0.3877, 0.3615**, and if you desaturate by 10%, it is **70.5612, 0.3407, 0.3428**.

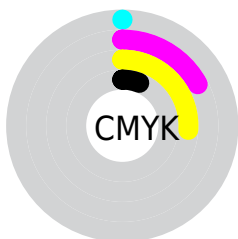
# Distribution



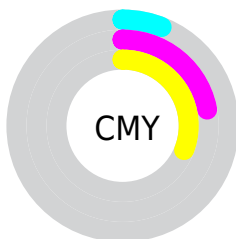
- Red (94%)
- Green (78%)
- Blue (69%)



- Red (94%)
- Yellow (82%)
- Blue (69%)



- Cyan (0%)
- Magenta (17%)
- Yellow (26%)
- Black (6%)




- Cyan (6%)
- Magenta (22%)
- Yellow (31%)


# Brightness & Saturation Gradients

These gradients show how the Yxy color 61.9132, 0.3624, 0.3521 changes by changing the brightness by 10 percent. The first figure shows a shift by +10% for each color and the second figure -10%.


Similar to the brightness gradients but the following saturation gradients show a change of the Yxy color 61.9132, 0.3624, 0.3521 by changing the saturation by 10% instead.



 61.9132, 0.3624,  
0.3521

 61.9132, 0.3624,  
0.3521


431.6144, 0.3386,  
0.3416

 44.9626, 0.3681,  
0.3544


 107.6001, 0.3540,  
0.3485

 31.4279, 0.3751,  
0.3573


137.1051, 0.3507,  
0.3471

 20.9249, 0.3843,  
0.3609


171.5637, 0.3480,  
0.3458

 13.0691, 0.3965,  
0.3654


211.3603, 0.3456,  
0.3448

 7.4762, 0.4136,  
0.3712

256.8793, 0.3435,  
0.3438

 3.7616, 0.4390,  
0.3787

308.5050, 0.3416,

 1.5411, 0.4912,

0.3430

0.3967

366.6219, 0.3400,  
0.3422

0.3174, 0.6469,  
0.3531

0.0000, 0.0000,  
0.0000

61.9132, 0.3624,  
0.3521

61.9132, 0.3624,  
0.3521

54.1918, 0.3877,  
0.3615

70.5612, 0.3407,  
0.3428

47.3567, 0.4168,  
0.3705

80.1574, 0.3223,  
0.3340

41.3773, 0.4494,  
0.3783

90.7332, 0.3067,  
0.3257

36.2173, 0.4844,  
0.3837

97.0877, 0.3029,  
0.3290

■ 31.8381, 0.5198,  
0.3854

■ 28.1970, 0.5527,  
0.3825

■ 25.2458, 0.5797,  
0.3744

■ 24.2219, 0.5892,  
0.3704

# Harmonies

## Analogous

The Analogous color harmony consists of three colors that are next to each other on the color wheel.



61.9132, 0.3565, 0.3315



61.9132, 0.3624, 0.3521



61.9132, 0.3544, 0.3678

# Triad

The Triadic color harmony groups three colors that are evenly spaced from another and form a triangle on the color wheel.



61.9132, 0.3624, 0.3521



61.9132, 0.2869, 0.3475



61.9132, 0.2894, 0.2878

# Complementary

The Complementary color scheme is a pair of colors which are on the opposite of each other on the color wheel.



61.9132, 0.3624, 0.3521



65.7263, 0.2725, 0.3046

# Split Complementary

Split-complementary colors differ from the complementary color scheme. The scheme consists of three colors, the original color and two neighbors of the complement color.



61.9132, 0.2721, 0.2902



61.9132, 0.3624, 0.3521



61.9132, 0.2707, 0.3240

# Square

The Square scheme is like the rectangle color scheme, but the four colors are evenly spaced on the color wheel.



61.9132, 0.3624, 0.3521



61.9132, 0.3104, 0.3661



61.9132, 0.2654, 0.3030



61.9132, 0.3135, 0.2954



# Rectangle

The Rectangle color scheme consists of four colors that form a rectangle on the color wheel.



61.9132, 0.3624, 0.3521



61.9132, 0.3425, 0.3729



61.9132, 0.2654, 0.3030



61.9132, 0.2826, 0.2874

# Sweetspot

The Sweet Spot groups the original color and five complimentary colors.



61.9160, 0.3624, 0.3521



90.4469, 0.3259, 0.3358



54.8836, 0.3323, 0.2848



18.9923, 0.3286, 0.3371



0.0000, 0.0000, 0.0000



21.4041, 0.3127, 0.3290



# Same Dimension

The Same Dimension uses a secret algorithm to generate beautiful new colors.



61.9160, 0.3624, 0.3521



66.9720, 0.3751, 0.3570



77.3723, 0.3544, 0.3838



16.6337, 0.3285, 0.3371



13.6052, 0.5863, 0.3727



1.3093, 0.5609, 0.3929

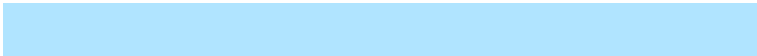


# Inverse Universe

The Inverse Universe completely reimagines the original color for something new.



65.7263, 0.2725, 0.3046



72.0581, 0.2646, 0.2990



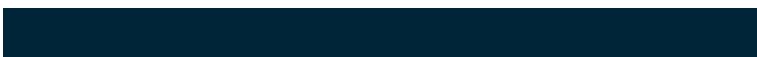
51.2738, 0.2690, 0.2675



16.9749, 0.2980, 0.3208



17.2225, 0.1929, 0.2143

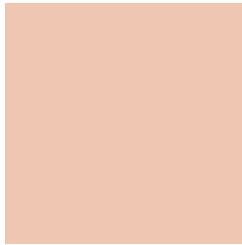


1.6160, 0.1976, 0.2312



# Previews

## White Background



This preview shows how the Yxy color 61.9132, 0.3624, 0.3521 looks on a white background.

## Color Contrast Check

Large Text (above 18pt) WCAG AA × Fail

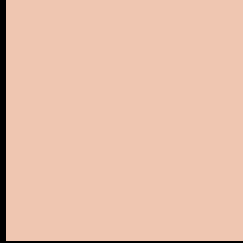
Any Text WCAG AA × Fail

Large Text (above 18pt) WCAG AAA × Fail

Any Text WCAG AAA × Fail



# Black Background



This preview shows how the Yxy color 61.9132, 0.3624, 0.3521 looks on a black background.

## Color Contrast Check

Large Text (above 18pt) WCAG AA ✓ Pass

Any Text WCAG AA ✓ Pass

Large Text (above 18pt) WCAG AAA ✓ Pass

Any Text WCAG AAA ✓ Pass

If you want to check with other color combinations, try the [Color Contrast Checker](#).

**Yxy 61.9132, 0.3624, 0.3521**

## **Background**



This preview shows how black text looks on a background with the Yxy color 61.9132, 0.3624, 0.3521.



This preview shows how white text looks on a background with the Yxy color 61.9132, 0.3624, 0.3521.

# Color Blindness Simulation

Color vision deficiency is a very complex topic, and I could not describe the different causes any better than Wikipedia does, so if you want to learn more, you should check out their [article about color blindness](#).

## Dichromacy



### Original Color

61.9132, 0.3624, 0.3521

### Protanopia

62.0777, 0.3387, 0.3580

### Deuteranopia

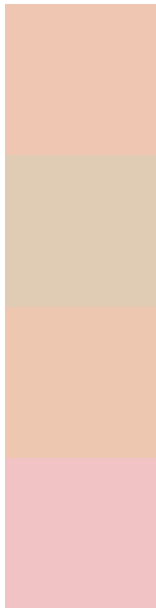
62.0257, 0.3605, 0.3533



## Tritanopia

61.7487, 0.3419, 0.3131

# Trichromacy



**Original Color**

61.9132, 0.3624, 0.3521

**Protanomaly**

61.8545, 0.3465, 0.3552

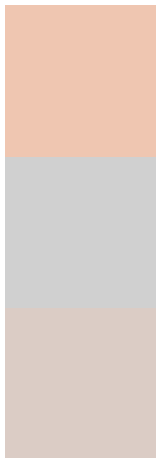
**Deuteranomaly**

62.1983, 0.3613, 0.3533

**Tritanomaly**

61.9387, 0.3495, 0.3270

# Monochromacy



**Original Color**

61.9132, 0.3624, 0.3521

**Achromatopsia**

63.0757, 0.3127, 0.3290

**Achromatomaly**

62.2770, 0.3295, 0.3370

# CSS Examples

## Text

The CSS property to change the color of the text to Yxy 61.9132, 0.3624, 0.3521 is called "color". The color property can be set on classes, ids or directly on the HTML element.

This example shows how text in the color `rgb(239, 198, 177)` looks like.

```
.text, #text, p{  
    color:rgb(239, 198, 177)  
}
```

If you want to add a text shadow in that color use the text-shadow property, you can generate a text shadow directly with our [CSS Text Shadow Generator](#).

Here you see how black text with a 4 pixel rgb(239, 198, 177) colored shadow looks like.

```
.shadow{ text-shadow: 4px 4px 2px rgb(239, 198, 177) }
```

## Border

The CSS property to change the border of an element to Yxy 61.9132, 0.3624, 0.3521 is called "border". The border property can be set on classes, ids or directly on the HTML element.

This example shows the color as border, it can be applied via the CSS property "border" or "border-color".

```
.border, #border, table{ border:4px solid rgb(239, 198, 177) }
```

If only the border color should be changed use the property `border-color`.

```
.border{ border-color:rgb(239, 198, 177) }
```

If you want to add a box shadow in that color use:

Here you see how a box with a 4 pixel `rgb(239, 198, 177)` colored shadow looks like.

```
.boxshadow{ -moz-box-shadow:4px 4px 4px  
4px rgb(239, 198, 177); -webkit-box-  
shadow:4px 4px 4px 4px rgb(239, 198, 177);  
box-shadow:4px 4px 4px 4px rgb(239, 198,  
177) }
```



# Background

The CSS property to change the background color of an element to Yxy 61.9132, 0.3624, 0.3521 is called "background". The background property can be set on classes, ids or directly on the HTML element.

```
.background, #background, body{  
background: rgb(239, 198, 177) }
```

If only the background color should be changed can be used:

```
.background{ background-color: rgb(239,  
198, 177) }
```

This example shows the color as background, it is applied via the CSS property "background".

To optimize and compress your CSS code, you can use our [online CSS compressor and optimizer](#) based on csstidy. If you want to create a linear or radial gradient as background or border, check our [CSS Gradient Generator](#).

Hey! You found this booklet interesting? Support Converting Colors with the new Membership Option!

The pro membership hides all ads, plus gives you double the colors in the color bucket, and more awesome pro features!

**[Learn more, Memberships starting at \\$2.50/m!](#)**

**Follow me  
on Twitter!**

@ConvertingColor