

Converting Colors

Yxy(61.9106, 0.3254, 0.3285)

Have a look what the booklet for
Yxy(61.9106, 0.3254, 0.3285)
contains.

Yxy(62.0837, 0.3251, 0.3290)	3
Conversions	4
Details	6
Harmonies	12
Previews	24
Color Blindness Simulation	27
CSS Examples	30

Color

Yxy(62.0837, 0.3251, 0.3290)

Conversions

Conversions Part 1

Format	Color
Hex	DBCBCB
RGB	219, 203, 203
RGB Percent	86%, 80%, 80%
CMY	0.1413, 0.2039, 0.2038
CMYK	0.00, 0.07, 0.07, 0.14
HSL	360°, 18%, 83%
HSV	360°, 7%, 86%
XYZ	61.3478, 62.0837, 65.2728
YIQ	207.7840, 9.5360, 3.3920

Conversions

Conversions Part 2

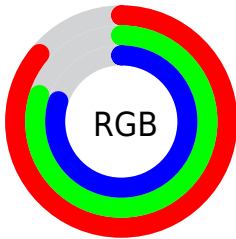
Format	Color
R _Y B	219, 203, 203
Decimal	14404555
CIE Lab	82.96, 5.56, 1.98
CIE LCh	83, 5.905, 19.588
Yxy	62.0837, 0.3251, 0.3290
Android (android.graphics.Color)	4292594635 (0xFFDBCBCB)
YUV	207.7840, -2.3585, 9.8364
Hunter-Lab	78.7932, 1.0905, 6.0390

Details

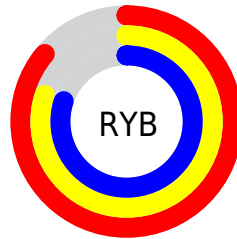
The Yxy color $62.0837, 0.3251, 0.3290$ is a light color, and the websafe version is hex `CCCCCC`. A complement of this color would be $68.4625, 0.3015, 0.3290$, and the grayscale version is $62.9416, 0.3127, 0.3290$.

A 20% lighter version of the original color is $100.0000, 0.3127, 0.3290$, and $31.5573, 0.3283, 0.3290$ is the 20% darker color. If you saturate the color by 10%, you get $51.4933, 0.3458, 0.3290$, and if you desaturate by 10%, it is $74.2873, 0.3086, 0.3290$.

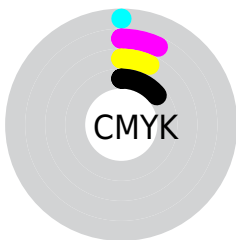
Distribution



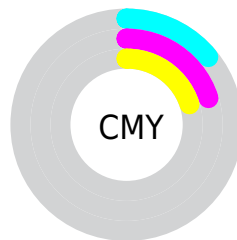
- Red (86%)
- Green (80%)
- Blue (80%)



- Red (86%)
- Yellow (80%)
- Blue (80%)



- Cyan (0%)
- Magenta (7%)
- Yellow (7%)
- Black (14%)



- Cyan (14%)
- Magenta (20%)
- Yellow (20%)

Brightness & Saturation Gradients

These gradients show how the Yxy color 62.0837, 0.3251, 0.3290 changes by changing the brightness by 10 percent. The first figure shows a shift by +10% for each color and the second figure -10%.

Similar to the brightness gradients but the following saturation gradients show a change of the Yxy color 62.0837, 0.3251, 0.3290 by changing the saturation by 10% instead.

■ 62.0837, 0.3251,
0.3290

■ 62.0837, 0.3251,
0.3290

432.2363, 0.3192,
0.3290

■ 45.1003, 0.3265,
0.3290

107.8465, 0.3230,
0.3290

■ 31.5365, 0.3283,
0.3290

137.3947, 0.3222,
0.3290

■ 21.0077, 0.3305,
0.3289

171.9000, 0.3215,
0.3290

■ 13.1296, 0.3336,
0.3289

211.7468, 0.3209,
0.3290

■ 7.5179, 0.3379,
0.3288

257.3194, 0.3204,
0.3290

■ 3.7880, 0.3444,
0.3286

309.0022, 0.3200,

■ 1.5557, 0.3555,

0.3290

367.1798, 0.3196,
0.3290

0.3281

0.3275, 0.4504,
0.3299

0.0000, 0.0000,
0.0000

62.0837, 0.3251,
0.3290

62.0837, 0.3251,
0.3290

51.4933, 0.3458,
0.3290

74.2873, 0.3086,
0.3290

42.4408, 0.3716,
0.3290

88.1591, 0.2954,
0.3290

34.8574, 0.4036,
0.3291

93.7971, 0.2911,
0.3289

28.6655, 0.4423,
0.3292

■ 23.7807, 0.4870,
0.3293

■ 20.1093, 0.5351,
0.3294

■ 17.5452, 0.5807,
0.3296

■ 15.9639, 0.6162,
0.3297

■ 15.1996, 0.6360,
0.3299

Harmonies

Analogous

The Analogous color harmony consists of three colors that are next to each other on the color wheel.



62.0837, 0.3194, 0.3227



62.0837, 0.3251, 0.3290



62.0837, 0.3275, 0.3354

Triad

The Triadic color harmony groups three colors that are evenly spaced from another and form a triangle on the color wheel.



62.0837, 0.3251, 0.3290



62.0837, 0.3134, 0.3404



62.0837, 0.2997, 0.3177

Complementary

The Complementary color scheme is a pair of colors which are on the opposite of each other on the color wheel.



62.0837, 0.3251, 0.3290



68.4625, 0.3015, 0.3290

Split Complementary

Split-complementary colors differ from the complementary color scheme. The scheme consists of three colors, the original color and two neighbors of the complement color.



62.0837, 0.2982, 0.3223



62.0837, 0.3251, 0.3290



62.0837, 0.3060, 0.3355

Square

The Square scheme is like the rectangle color scheme, but the four colors are evenly spaced on the color wheel.



62.0837, 0.3251, 0.3290



62.0837, 0.3207, 0.3421



62.0837, 0.3005, 0.3288



62.0837, 0.3047, 0.3162

Rectangle

The Rectangle color scheme consists of four colors that form a rectangle on the color wheel.



62.0837, 0.3251, 0.3290



62.0837, 0.3268, 0.3389



62.0837, 0.3005, 0.3288



62.0837, 0.2988, 0.3190

Sweetspot

The Sweet Spot groups the original color and five complimentary colors.



62.0864, 0.3251, 0.3290



96.4655, 0.3159, 0.3290



62.8450, 0.3133, 0.3112



20.6846, 0.3158, 0.3290



0.0000, 0.0000, 0.0000



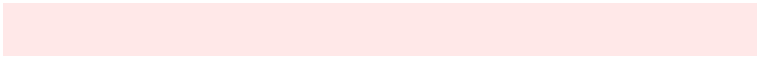
21.4041, 0.3127, 0.3290

Same Dimension

The Same Dimension uses a secret algorithm to generate beautiful new colors.



62.0864, 0.3251, 0.3290



84.8329, 0.3284, 0.3290



65.8228, 0.3243, 0.3377



13.0519, 0.3291, 0.3290



8.9306, 0.6399, 0.3299



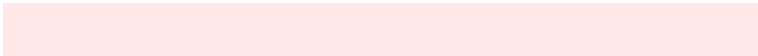
0.5787, 0.6392, 0.3295

Inverse Universe

The Inverse Universe completely reimagines the original color for something new.



62.0864, 0.3251, 0.3290



84.8329, 0.3284, 0.3290



64.5292, 0.3015, 0.3201



13.0519, 0.3291, 0.3290



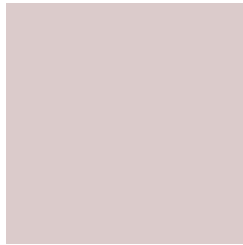
8.9306, 0.6399, 0.3299



0.5787, 0.6392, 0.3295

Previews

White Background



This preview shows how the Yxy color 62.0837, 0.3251, 0.3290 looks on a white background.

Color Contrast Check

Large Text (above 18pt) WCAG AA × Fail

Any Text WCAG AA × Fail

Large Text (above 18pt) WCAG AAA × Fail

Any Text WCAG AAA × Fail

Black Background



This preview shows how the Yxy color 62.0837, 0.3251, 0.3290 looks on a black background.

Color Contrast Check

Large Text (above 18pt) WCAG AA ✓ Pass

Any Text WCAG AA ✓ Pass

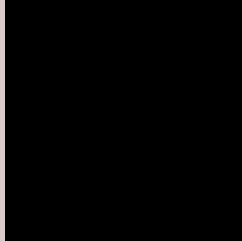
Large Text (above 18pt) WCAG AAA ✓ Pass

Any Text WCAG AAA ✓ Pass

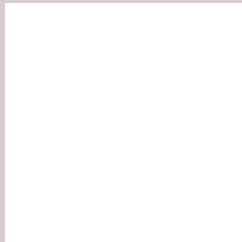
If you want to check with other color combinations, try the [Color Contrast Checker](#).

Yxy 62.0837, 0.3251, 0.3290

Background



This preview shows how black text looks on a background with the Yxy color 62.0837, 0.3251, 0.3290.



This preview shows how white text looks on a background with the Yxy color 62.0837, 0.3251, 0.3290.

Color Blindness Simulation

Color vision deficiency is a very complex topic, and I could not describe the different causes any better than Wikipedia does, so if you want to learn more, you should check out their [article about color blindness](#).

Dichromacy



Original Color

62.0837, 0.3251, 0.3290

Protanopia

62.3993, 0.3172, 0.3302

Deuteranopia

62.1622, 0.3319, 0.3246



Tritanopia

62.1552, 0.3166, 0.3113

Trichromacy



Original Color

62.0837, 0.3251, 0.3290

Protanomaly

62.3184, 0.3203, 0.3302

Deuteranomaly

62.1405, 0.3294, 0.3257

Tritanomaly

62.2102, 0.3194, 0.3178

Monochromacy



Original Color

62.0837, 0.3251, 0.3290

Achromatopsia

63.0757, 0.3127, 0.3290

Achromatomaly

62.5959, 0.3173, 0.3290

CSS Examples

Text

The CSS property to change the color of the text to Yxy 62.0837, 0.3251, 0.3290 is called "color". The color property can be set on classes, ids or directly on the HTML element.

This example shows how text in the color `rgb(219, 203, 203)` looks like.

```
.text, #text, p{  
    color:rgb(219, 203, 203)  
}
```

If you want to add a text shadow in that color use the text-shadow property, you can generate a text shadow directly with our [CSS Text Shadow Generator](#).

Here you see how black text with a 4 pixel rgb(219, 203, 203) colored shadow looks like.

```
.shadow{ text-shadow: 4px 4px 2px rgb(219, 203, 203) }
```

Border

The CSS property to change the border of an element to Yxy 62.0837, 0.3251, 0.3290 is called "border". The border property can be set on classes, ids or directly on the HTML element.

This example shows the color as border, it can be applied via the CSS property "border" or "border-color".

```
.border, #border, table{ border:4px solid rgb(219, 203, 203) }
```

If only the border color should be changed use the property `border-color`.

```
.border{ border-color:rgb(219, 203, 203) }
```

If you want to add a box shadow in that color use:

Here you see how a box with a 4 pixel `rgb(219, 203, 203)` colored shadow looks like.

```
.boxshadow{ -moz-box-shadow:4px 4px 4px  
4px rgb(219, 203, 203); -webkit-box-  
shadow:4px 4px 4px 4px rgb(219, 203, 203);  
box-shadow:4px 4px 4px 4px rgb(219, 203,  
203) }
```


Background

The CSS property to change the background color of an element to Yxy 62.0837, 0.3251, 0.3290 is called "background". The background property can be set on classes, ids or directly on the HTML element.

```
.background, #background, body{  
background: rgb(219, 203, 203) }
```

If only the background color should be changed can be used:

```
.background{ background-color: rgb(219,  
203, 203) }
```

This example shows the color as background, it is applied via the CSS property "background".

To optimize and compress your CSS code, you can use our [online CSS compressor and optimizer](#) based on csstidy. If you want to create a linear or radial gradient as background or border, check our [CSS Gradient Generator](#).

Hey! You found this booklet interesting? Support Converting Colors with the new Membership Option!

The pro membership hides all ads, plus gives you double the colors in the color bucket, and more awesome pro features!

[Learn more, Memberships starting at \\$2.50/m!](#)

**Follow me
on Twitter!**

@ConvertingColor