

Converting Colors

Yxy(61.9520, 0.3297, 0.3332)

Have a look what the booklet for
Yxy(61.9520, 0.3297, 0.3332)
contains.

Yxy(62.2075, 0.3297, 0.3336)	3
Conversions	4
Details	6
Harmonies	12
Previews	24
Color Blindness Simulation	27
CSS Examples	30

Color

Yxy(62.2075, 0.3297, 0.3336)

Conversions

Conversions Part 1

Format	Color
Hex	DDCBC7
RGB	221, 203, 199
RGB Percent	87%, 80%, 78%
CMY	0.1333, 0.2039, 0.2197
CMYK	0.00, 0.08, 0.10, 0.13
HSL	11°, 24%, 82%
HSV	11°, 10%, 87%
XYZ	61.4803, 62.2075, 62.7856
YIQ	207.9260, 12.0120, 2.5720

Conversions

Conversions Part 2

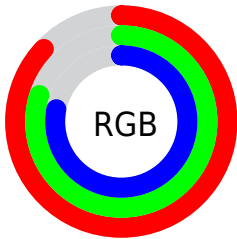
Format	Color
R _Y B	221, 204, 199
Decimal	14535623
CIE Lab	83.02, 5.59, 4.26
CIE LCh	83, 7.030, 37.325
Yxy	62.2075, 0.3297, 0.3336
Android (android.graphics.Color)	4292725703 (0xFFDDCBC7)
YUV	207.9260, -4.4005, 11.4659
Hunter-Lab	78.8717, 1.1146, 8.0126

Details

The Yxy color $62.2075, 0.3297, 0.3336$ is a light color, and the websafe version is hex `CCCCCC`. A complement of this color would be $66.9672, 0.2974, 0.3244$, and the grayscale version is $63.0497, 0.3127, 0.3290$.

A 20% lighter version of the original color is $100.0000, 0.3127, 0.3290$, and $31.6462, 0.3344, 0.3350$ is the 20% darker color. If you saturate the color by 10%, you get $53.2203, 0.3504, 0.3385$, and if you desaturate by 10%, it is $72.3423, 0.3127, 0.3290$.

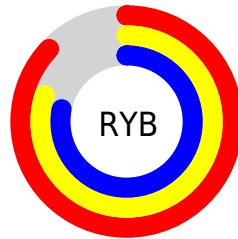
Distribution



Red (87%)

Green (80%)

Blue (78%)



Red (87%)

Yellow (80%)

Blue (78%)

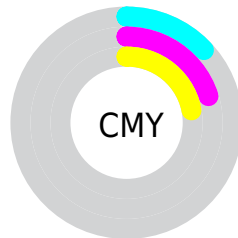


Cyan (0%)

Magenta (8%)

Yellow (10%)

Black (13%)



Cyan (13%)


Magenta (20%)

Yellow (22%)

Brightness & Saturation Gradients

These gradients show how the Yxy color 62.2075, 0.3297, 0.3336 changes by changing the brightness by 10 percent. The first figure shows a shift by +10% for each color and the second figure -10%.

Similar to the brightness gradients but the following saturation gradients show a change of the Yxy color 62.2075, 0.3297, 0.3336 by changing the saturation by 10% instead.


 62.2075, 0.3297,
0.3336

 62.2075, 0.3297,
0.3336


432.6876, 0.3216,
0.3315

 45.2004, 0.3316,
0.3341


108.0254, 0.3268,
0.3329

 31.6153, 0.3340,
0.3347


137.6049, 0.3257,
0.3326

 21.0678, 0.3372,
0.3355


172.1441, 0.3248,
0.3323

 13.1736, 0.3413,
0.3365

212.0272, 0.3240,
0.3321

 7.5482, 0.3472,
0.3378

257.6387, 0.3233,
0.3319

 3.8072, 0.3562,
0.3398

309.3630, 0.3226,

 1.5663, 0.3715,

0.3318

0.3428

367.5845, 0.3221,
0.3316

0.3347, 0.5312,
0.3911

0.0000, 0.0000,
0.0000

62.2075, 0.3297,
0.3336

62.2075, 0.3297,
0.3336

53.2203, 0.3504,
0.3385

72.3423, 0.3127,
0.3290

45.3321, 0.3754,
0.3437

83.6546, 0.2986,
0.3247

38.5030, 0.4054,
0.3487

94.1115, 0.2923,
0.3289

32.6874, 0.4405,
0.3533

■ 27.8365, 0.4802,
0.3567

■ 23.8975, 0.5224,
0.3580

■ 20.8121, 0.5633,
0.3563

■ 18.5150, 0.5978,
0.3513

■ 16.9250, 0.6221,
0.3442

Harmonies

Analogous

The Analogous color harmony consists of three colors that are next to each other on the color wheel.



62.2075, 0.3251, 0.3258



62.2075, 0.3297, 0.3336



62.2075, 0.3297, 0.3404

Triad

The Triadic color harmony groups three colors that are evenly spaced from another and form a triangle on the color wheel.



62.2075, 0.3297, 0.3336



62.2075, 0.3082, 0.3395



62.2075, 0.3004, 0.3140

Complementary

The Complementary color scheme is a pair of colors which are on the opposite of each other on the color wheel.



62.2075, 0.3297, 0.3336



66.9672, 0.2974, 0.3244

Split Complementary

Split-complementary colors differ from the complementary color scheme. The scheme consists of three colors, the original color and two neighbors of the complement color.



62.2075, 0.2960, 0.3174



62.2075, 0.3297, 0.3336



62.2075, 0.3005, 0.3321

Square

The Square scheme is like the rectangle color scheme, but the four colors are evenly spaced on the color wheel.



62.2075, 0.3297, 0.3336



62.2075, 0.3172, 0.3439



62.2075, 0.2960, 0.3240



62.2075, 0.3081, 0.3146

Rectangle

The Rectangle color scheme consists of four colors that form a rectangle on the color wheel.



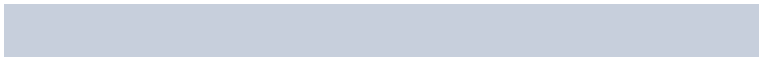
62.2075, 0.3297, 0.3336



62.2075, 0.3271, 0.3433



62.2075, 0.2960, 0.3240



62.2075, 0.2985, 0.3148

Sweetspot

The Sweet Spot groups the original color and five complimentary colors.



62.2102, 0.3297, 0.3336



95.5943, 0.3175, 0.3304



61.2351, 0.3165, 0.3086



20.2144, 0.3189, 0.3307



0.0000, 0.0000, 0.0000



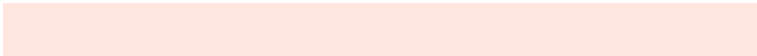
21.4041, 0.3127, 0.3290

Same Dimension

The Same Dimension uses a secret algorithm to generate beautiful new colors.



62.2102, 0.3297, 0.3336



83.2583, 0.3338, 0.3346



67.4137, 0.3284, 0.3454



13.4352, 0.3287, 0.3333



9.9493, 0.6200, 0.3459



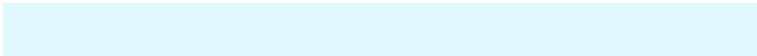
0.7609, 0.5898, 0.3699

Inverse Universe

The Inverse Universe completely reimagines the original color for something new.



66.9672, 0.2974, 0.3244



91.1289, 0.2942, 0.3233



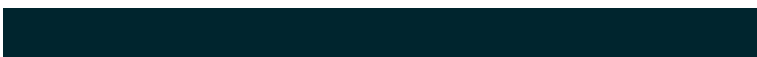
61.6550, 0.2973, 0.3120



14.4030, 0.2982, 0.3246



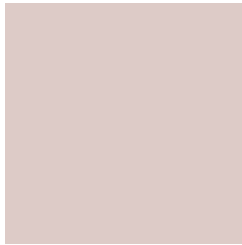
22.2761, 0.2082, 0.2697



1.5507, 0.2112, 0.2804

Previews

White Background



This preview shows how the Yxy color 62.2075, 0.3297, 0.3336 looks on a white background.

Color Contrast Check

Large Text (above 18pt) WCAG AA × Fail

Any Text WCAG AA × Fail

Large Text (above 18pt) WCAG AAA × Fail

Any Text WCAG AAA × Fail

Black Background



This preview shows how the Yxy color 62.2075, 0.3297, 0.3336 looks on a black background.

Color Contrast Check

Large Text (above 18pt) WCAG AA ✓ Pass

Any Text WCAG AA ✓ Pass

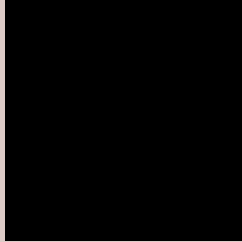
Large Text (above 18pt) WCAG AAA ✓ Pass

Any Text WCAG AAA ✓ Pass

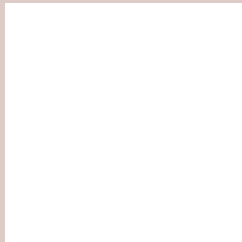
If you want to check with other color combinations, try the [Color Contrast Checker](#).

Yxy 62.2075, 0.3297, 0.3336

Background



This preview shows how black text looks on a background with the Yxy color 62.2075, 0.3297, 0.3336.



This preview shows how white text looks on a background with the Yxy color 62.2075, 0.3297, 0.3336.

Color Blindness Simulation

Color vision deficiency is a very complex topic, and I could not describe the different causes any better than Wikipedia does, so if you want to learn more, you should check out their [article about color blindness](#).

Dichromacy



Original Color

62.2075, 0.3297, 0.3336

Protanopia

62.3567, 0.3209, 0.3348

Deuteranopia

62.1367, 0.3357, 0.3291



Tritanopia

61.9544, 0.3190, 0.3113

Trichromacy



Original Color

62.2075, 0.3297, 0.3336

Protanomaly

62.2798, 0.3240, 0.3348

Deuteranomaly

62.1122, 0.3332, 0.3302

Tritanomaly

61.9560, 0.3225, 0.3190

Monochromacy



Original Color

62.2075, 0.3297, 0.3336

Achromatopsia

63.0757, 0.3127, 0.3290

Achromatomaly

62.6965, 0.3188, 0.3302

CSS Examples

Text

The CSS property to change the color of the text to Yxy 62.2075, 0.3297, 0.3336 is called "color". The color property can be set on classes, ids or directly on the HTML element.

This example shows how text in the color `rgb(221, 203, 199)` looks like.

```
.text, #text, p{  
    color:rgb(221, 203, 199)  
}
```

If you want to add a text shadow in that color use the text-shadow property, you can generate a text shadow directly with our [CSS Text Shadow Generator](#).

Here you see how black text with a 4 pixel rgb(221, 203, 199) colored shadow looks like.

```
.shadow{ text-shadow: 4px 4px 2px rgb(221, 203, 199) }
```

Border

The CSS property to change the border of an element to Yxy 62.2075, 0.3297, 0.3336 is called "border". The border property can be set on classes, ids or directly on the HTML element.

This example shows the color as border, it can be applied via the CSS property "border" or "border-color".

```
.border, #border, table{ border:4px solid rgb(221, 203, 199) }
```

If only the border color should be changed use the property border-color.

```
.border{ border-color:rgb(221, 203, 199) }
```

If you want to add a box shadow in that color use:

Here you see how a box with a 4 pixel rgb(221, 203, 199) colored shadow looks like.

```
.boxshadow{ -moz-box-shadow:4px 4px 4px  
4px rgb(221, 203, 199); -webkit-box-  
shadow:4px 4px 4px 4px rgb(221, 203, 199);  
box-shadow:4px 4px 4px 4px rgb(221, 203,  
199) }
```


Background

The CSS property to change the background color of an element to Yxy 62.2075, 0.3297, 0.3336 is called "background". The background property can be set on classes, ids or directly on the HTML element.

```
.background, #background, body{  
background: rgb(221, 203, 199) }
```

If only the background color should be changed can be used:

```
.background{ background-color: rgb(221,  
203, 199) }
```

This example shows the color as background, it is applied via the CSS property "background".

To optimize and compress your CSS code, you can use our [online CSS compressor and optimizer](#) based on csstidy. If you want to create a linear or radial gradient as background or border, check our [CSS Gradient Generator](#).

Hey! You found this booklet interesting? Support Converting Colors with the new Membership Option!

The pro membership hides all ads, plus gives you double the colors in the color bucket, and more awesome pro features!

[Learn more, Memberships starting at \\$2.50/m!](#)

**Follow me
on Twitter!**

@ConvertingColor