

Converting Colors

Yxy(61.9794, 0.3244, 0.3314)

Have a look what the booklet for
Yxy(61.9794, 0.3244, 0.3314)
contains.

Yxy(62.2017, 0.3242, 0.3313)	3
Conversions	4
Details	6
Harmonies	12
Previews	24
Color Blindness Simulation	27
CSS Examples	30

Color

Yxy(62.2017, 0.3242, 0.3313)

Conversions

Conversions Part 1

Format	Color
Hex	D9CCCA
RGB	217, 204, 202
RGB Percent	85%, 80%, 79%
CMY	0.1490, 0.2000, 0.2078
CMYK	0.00, 0.06, 0.07, 0.15
HSL	8°, 16%, 82%
HSV	8°, 7%, 85%
XYZ	60.8687, 62.2017, 64.6800
YIQ	207.6590, 8.3900, 2.1340

Conversions

Conversions Part 2

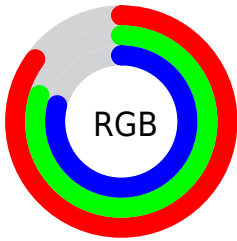
Format	Color
RYB	217, 204, 202
Decimal	14273738
CIELab	83.02, 4.17, 2.60
CIElCh	83, 4.910, 31.970
Yxy	62.2017, 0.3242, 0.3313
Android (android.graphics.Color)	4292463818 (0xFFD9CCCA)
YUV	207.6590, -2.7899, 8.1921
Hunter-Lab	78.8681, -0.2566, 6.5837

Details

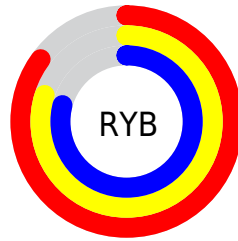
The Yxy color **62.2017, 0.3242, 0.3313** is a light color, and the websafe version is hex **CCCCCC**. A complement of this color would be **66.1687, 0.3021, 0.3267**, and the grayscale version is **62.8601, 0.3127, 0.3290**.

A 20% lighter version of the original color is **100.0000, 0.3127, 0.3290**, and **31.6322, 0.3270, 0.3320** is the 20% darker color. If you saturate the color by 10%, you get **52.8393, 0.3439, 0.3349**, and if you desaturate by 10%, it is **72.7939, 0.3081, 0.3280**.

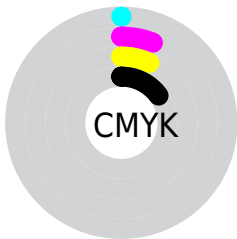
Distribution



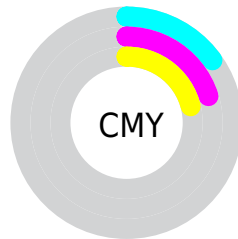
- Red (85%)
- Green (80%)
- Blue (79%)



- Red (85%)
- Yellow (80%)
- Blue (79%)



- Cyan (0%)
- Magenta (6%)
- Yellow (7%)
- Black (15%)



- Cyan (15%)
- Magenta (20%)
- Yellow (21%)

Brightness & Saturation Gradients

These gradients show how the Yxy color 62.2017, 0.3242, 0.3313 changes by changing the brightness by 10 percent. The first figure shows a shift by +10% for each color and the second figure -10%.

Similar to the brightness gradients but the following saturation gradients show a change of the Yxy color 62.2017, 0.3242, 0.3313 by changing the saturation by 10% instead.

■ 62.2017, 0.3242,
0.3313

■ 62.2017, 0.3242,
0.3313

432.6664, 0.3187,
0.3302

■ 45.1957, 0.3255,
0.3315

108.0170, 0.3223,
0.3309

■ 31.6116, 0.3271,
0.3318

137.5951, 0.3215,
0.3308

■ 21.0650, 0.3292,
0.3322

172.1326, 0.3209,
0.3307

■ 13.1715, 0.3320,
0.3327

212.0141, 0.3203,
0.3306

■ 7.5468, 0.3360,
0.3334

257.6238, 0.3199,
0.3305

■ 3.8063, 0.3421,
0.3344

309.3461, 0.3194,

■ 1.5658, 0.3523,

0.3304

367.5656, 0.3191,
0.3303

0.3360

0.3344, 0.4481,
0.3572

0.0000, 0.0000,
0.0000

62.2017, 0.3242,
0.3313

62.2017, 0.3242,
0.3313

52.8393, 0.3439,
0.3349

72.7939, 0.3081,
0.3280

44.6543, 0.3681,
0.3386

84.6497, 0.2949,
0.3250

37.6024, 0.3974,
0.3423

93.4913, 0.2900,
0.3289

31.6335, 0.4322,
0.3458

■ 26.6937, 0.4724,
0.3485

■ 22.7245, 0.5161,
0.3497

■ 19.6614, 0.5595,
0.3489

■ 17.4320, 0.5970,
0.3455

■ 15.9517, 0.6232,
0.3399

Harmonies

Analogous

The Analogous color harmony consists of three colors that are next to each other on the color wheel.



62.2017, 0.3205, 0.3258



62.2017, 0.3242, 0.3313



62.2017, 0.3248, 0.3363

Triad

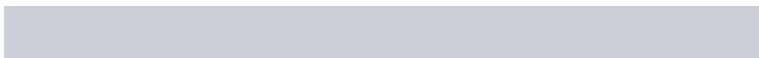
The Triadic color harmony groups three colors that are evenly spaced from another and form a triangle on the color wheel.



62.2017, 0.3242, 0.3313



62.2017, 0.3107, 0.3370



62.2017, 0.3033, 0.3188

Complementary

The Complementary color scheme is a pair of colors which are on the opposite of each other on the color wheel.



62.2017, 0.3242, 0.3313



66.1687, 0.3021, 0.3267

Split Complementary

Split-complementary colors differ from the complementary color scheme. The scheme consists of three colors, the original color and two neighbors of the complement color.



62.2017, 0.3008, 0.3216



62.2017, 0.3242, 0.3313



62.2017, 0.3050, 0.3322

Square

The Square scheme is like the rectangle color scheme, but the four colors are evenly spaced on the color wheel.



62.2017, 0.3242, 0.3313



62.2017, 0.3170, 0.3396



62.2017, 0.3014, 0.3266



62.2017, 0.3084, 0.3186

Rectangle

The Rectangle color scheme consists of four colors that form a rectangle on the color wheel.



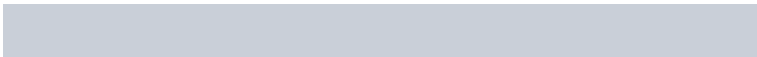
62.2017, 0.3242, 0.3313



62.2017, 0.3234, 0.3386



62.2017, 0.3014, 0.3266



62.2017, 0.3022, 0.3194

Sweetspot

The Sweet Spot groups the original color and five complimentary colors.



62.2044, 0.3242, 0.3313



96.8877, 0.3159, 0.3297



61.9158, 0.3148, 0.3142



20.7706, 0.3157, 0.3296



0.0000, 0.0000, 0.0000



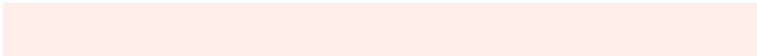
21.4041, 0.3127, 0.3290

Same Dimension

The Same Dimension uses a secret algorithm to generate beautiful new colors.



62.2044, 0.3242, 0.3313



87.9873, 0.3263, 0.3317



65.7297, 0.3235, 0.3395



13.3297, 0.3288, 0.3322



9.5465, 0.6276, 0.3398



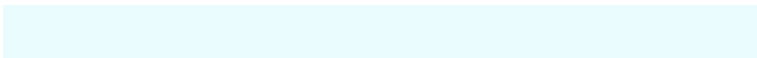
0.7112, 0.6020, 0.3602

Inverse Universe

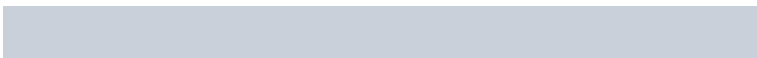
The Inverse Universe completely reimagines the original color for something new.



66.1687, 0.3021, 0.3267



94.6127, 0.3003, 0.3263



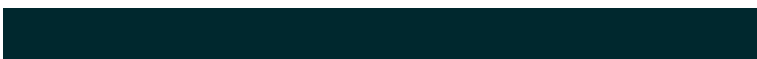
62.5597, 0.3021, 0.3183



14.5183, 0.2982, 0.3258



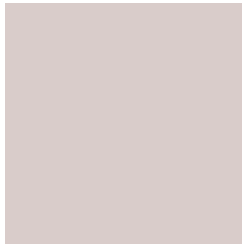
24.9423, 0.2129, 0.2865



1.6997, 0.2150, 0.2941

Previews

White Background



This preview shows how the Yxy color 62.2017, 0.3242, 0.3313 looks on a white background.

Color Contrast Check

Large Text (above 18pt) WCAG AA × Fail

Any Text WCAG AA × Fail

Large Text (above 18pt) WCAG AAA × Fail

Any Text WCAG AAA × Fail

Black Background



This preview shows how the Yxy color 62.2017, 0.3242, 0.3313 looks on a black background.

Color Contrast Check

Large Text (above 18pt) WCAG AA ✓ Pass

Any Text WCAG AA ✓ Pass

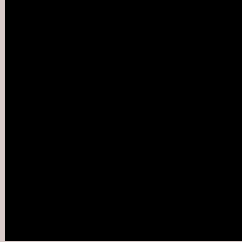
Large Text (above 18pt) WCAG AAA ✓ Pass

Any Text WCAG AAA ✓ Pass

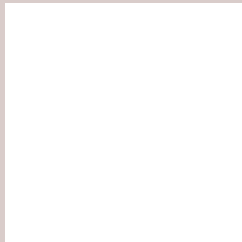
If you want to check with other color combinations, try the [Color Contrast Checker](#).

Yxy 62.2017, 0.3242, 0.3313

Background



This preview shows how black text looks on a background with the Yxy color 62.2017, 0.3242, 0.3313.



This preview shows how white text looks on a background with the Yxy color 62.2017, 0.3242, 0.3313.

Color Blindness Simulation

Color vision deficiency is a very complex topic, and I could not describe the different causes any better than Wikipedia does, so if you want to learn more, you should check out their [article about color blindness](#).

Dichromacy



Original Color

62.2017, 0.3242, 0.3313

Protanopia

62.3033, 0.3187, 0.3325

Deuteranopia

62.1143, 0.3326, 0.3257



Tritanopia

62.3109, 0.3150, 0.3123

Trichromacy



Original Color

62.2017, 0.3242, 0.3313

Protanomaly

62.1206, 0.3203, 0.3313

Deuteranomaly

61.9324, 0.3293, 0.3268

Tritanomaly

62.3708, 0.3178, 0.3189

Monochromacy



Original Color

62.2017, 0.3242, 0.3313

Achromatopsia

63.0757, 0.3127, 0.3290

Achromatomaly

62.9308, 0.3164, 0.3302

CSS Examples

Text

The CSS property to change the color of the text to Yxy 62.2017, 0.3242, 0.3313 is called "color". The color property can be set on classes, ids or directly on the HTML element.

This example shows how text in the color rgb(217, 204, 202) looks like.

```
.text, #text, p{  
    color:rgb(217, 204, 202)  
}
```

If you want to add a text shadow in that color use the text-shadow property, you can generate a text shadow directly with our [CSS Text Shadow Generator](#).

Here you see how black text with a 4 pixel rgb(217, 204, 202) colored shadow looks like.

```
.shadow{ text-shadow: 4px 4px 2px rgb(217, 204, 202) }
```

Border

The CSS property to change the border of an element to Yxy 62.2017, 0.3242, 0.3313 is called "border". The border property can be set on classes, ids or directly on the HTML element.

This example shows the color as border, it can be applied via the CSS property "border" or "border-color".

```
.border, #border, table{ border:4px solid rgb(217, 204, 202) }
```

If only the border color should be changed use the property border-color.

```
.border{ border-color:rgb(217, 204, 202) }
```

If you want to add a box shadow in that color use:

Here you see how a box with a 4 pixel rgb(217, 204, 202) colored shadow looks like.

```
.boxshadow{ -moz-box-shadow:4px 4px 4px  
4px rgb(217, 204, 202); -webkit-box-  
shadow:4px 4px 4px 4px rgb(217, 204, 202);  
box-shadow:4px 4px 4px 4px rgb(217, 204,  
202) }
```


Background

The CSS property to change the background color of an element to Yxy 62.2017, 0.3242, 0.3313 is called "background". The background property can be set on classes, ids or directly on the HTML element.

```
.background, #background, body{  
background: rgb(217, 204, 202) }
```

If only the background color should be changed can be used:

```
.background{ background-color: rgb(217,  
204, 202) }
```

This example shows the color as background, it is applied via the CSS property "background".

To optimize and compress your CSS code, you can use our [online CSS compressor and optimizer](#) based on csstidy. If you want to create a linear or radial gradient as background or border, check our [CSS Gradient Generator](#).

Hey! You found this booklet interesting? Support Converting Colors with the new Membership Option!

The pro membership hides all ads, plus gives you double the colors in the color bucket, and more awesome pro features!

[Learn more, Memberships starting at \\$2.50/m!](#)

**Follow me
on Twitter!**

@ConvertingColor