

Converting Colors

Yxy(61.9939, 0.3405, 0.3450)

Have a look what the booklet for
Yxy(61.9939, 0.3405, 0.3450)
contains.

Yxy(61.7192, 0.3406, 0.3449)	3
Conversions	4
Details	6
Harmonies	12
Previews	24
Color Blindness Simulation	27
CSS Examples	30

Color

Yxy(61.7192, 0.3406, 0.3449)

Conversions

Conversions Part 1

Format	Color
Hex	E0CABC
RGB	224, 202, 188
RGB Percent	88%, 79%, 74%
CMY	0.1214, 0.2079, 0.2627
CMYK	0.00, 0.10, 0.16, 0.12
HSL	23°, 37%, 81%
HSV	23°, 16%, 88%
XYZ	60.9497, 61.7192, 56.2792
YIQ	206.9820, 17.6060, 0.3100

Conversions

Conversions Part 2

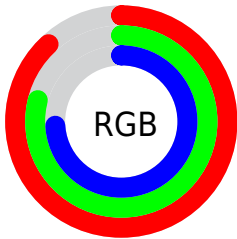
Format	Color
R _Y B	224, 211, 188
Decimal	14731964
CIE Lab	82.76, 5.46, 9.78
CIE LCh	83, 11.199, 60.803
Yxy	61.7192, 0.3406, 0.3449
Android (android.graphics.Color)	4292922044 (0xFFE0CABC)
YUV	206.9820, -9.3581, 14.9248
Hunter-Lab	78.5616, 1.0013, 12.5195

Details

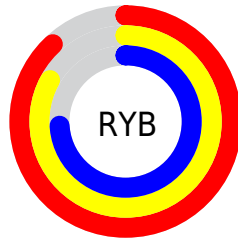
The Yxy color **61.7192, 0.3406, 0.3449** is a light color, and the websafe version is hex **CCCCCC**. A complement of this color would be **62.2023, 0.2877, 0.3126**, and the grayscale version is **62.4426, 0.3127, 0.3290**.

A 20% lighter version of the original color is **99.3117, 0.3191, 0.3396**, and **31.3641, 0.3480, 0.3484** is the 20% darker color. If you saturate the color by 10%, you get **54.6780, 0.3617, 0.3555**, and if you desaturate by 10%, it is **69.4877, 0.3225, 0.3348**.

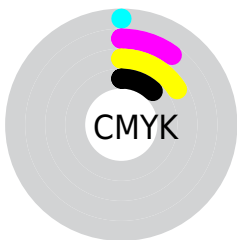
Distribution



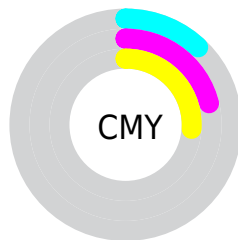
- Red (88%)
- Green (79%)
- Blue (74%)



- Red (88%)
- Yellow (83%)
- Blue (74%)



- Cyan (0%)
- Magenta (10%)
- Yellow (16%)
- Black (12%)





- Cyan (12%)
- Magenta (21%)
- Yellow (26%)

Brightness & Saturation Gradients


These gradients show how the Yxy color 61.7192, 0.3406, 0.3449 changes by changing the brightness by 10 percent. The first figure shows a shift by +10% for each color and the second figure -10%.

Similar to the brightness gradients but the following saturation gradients show a change of the Yxy color 61.7192, 0.3406, 0.3449 by changing the saturation by 10% instead.


 61.7192, 0.3406,
0.3449

 61.7192, 0.3406,
0.3449


430.9061, 0.3272,
0.3375

 44.8058, 0.3438,
0.3466

 107.3196, 0.3359,
0.3423

 31.3045, 0.3477,
0.3488

136.7754, 0.3341,
0.3413

 20.8308, 0.3529,
0.3515


171.1809, 0.3325,
0.3404

 13.0004, 0.3598,
0.3551


210.9203, 0.3312,
0.3397

 7.4288, 0.3695,
0.3600

256.3782, 0.3300,
0.3390

 3.7317, 0.3842,
0.3671

307.9388, 0.3290,

 1.5246, 0.4093,

0.3384

365.9867, 0.3281,
0.3379

0.3784

0.3060, 0.5809,
0.4191

0.0000, 0.0000,
0.0000

61.7192, 0.3406,
0.3449

61.7192, 0.3406,
0.3449

54.6780, 0.3617,
0.3555

69.4877, 0.3225,
0.3348

48.3343, 0.3861,
0.3661

77.9961, 0.3069,
0.3254

42.6678, 0.4138,
0.3764

87.2527, 0.2938,
0.3169

37.6544, 0.4445,
0.3853

94.5953, 0.2941,
0.3289

■ 33.2681, 0.4771,
0.3919

■ 29.4811, 0.5100,
0.3947

■ 26.2627, 0.5406,
0.3926

■ 23.5782, 0.5662,
0.3852

■ 22.6588, 0.5751,
0.3815

Harmonies

Analogous

The Analogous color harmony consists of three colors that are next to each other on the color wheel.



61.7192, 0.3389, 0.3335



61.7192, 0.3406, 0.3449



61.7192, 0.3346, 0.3525

Triad

The Triadic color harmony groups three colors that are evenly spaced from another and form a triangle on the color wheel.



61.7192, 0.3406, 0.3449



61.7192, 0.2955, 0.3368



61.7192, 0.3023, 0.3055

Complementary

The Complementary color scheme is a pair of colors which are on the opposite of each other on the color wheel.



61.7192, 0.3406, 0.3449



62.2023, 0.2877, 0.3126

Split Complementary

Split-complementary colors differ from the complementary color scheme. The scheme consists of three colors, the original color and two neighbors of the complement color.



61.7192, 0.2910, 0.3058



61.7192, 0.3406, 0.3449



61.7192, 0.2872, 0.3236

Square

The Square scheme is like the rectangle color scheme, but the four colors are evenly spaced on the color wheel.



61.7192, 0.3406, 0.3449



61.7192, 0.3085, 0.3480



61.7192, 0.2856, 0.3123



61.7192, 0.3165, 0.3111

Rectangle

The Rectangle color scheme consists of four colors that form a rectangle on the color wheel.



61.7192, 0.3406, 0.3449



61.7192, 0.3272, 0.3541



61.7192, 0.2856, 0.3123



61.7192, 0.2980, 0.3049

Sweetspot

The Sweet Spot groups the original color and five complimentary colors.



61.7220, 0.3406, 0.3449



94.3275, 0.3207, 0.3338



56.4884, 0.3252, 0.3041



20.0237, 0.3219, 0.3345



0.0000, 0.0000, 0.0000



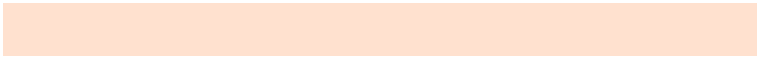
21.4041, 0.3127, 0.3290

Same Dimension

The Same Dimension uses a secret algorithm to generate beautiful new colors.



61.7220, 0.3406, 0.3449



79.7808, 0.3467, 0.3481



70.5913, 0.3375, 0.3644



14.5682, 0.3282, 0.3381



13.3901, 0.5724, 0.3837



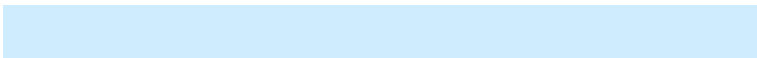
1.0983, 0.5438, 0.4064

Inverse Universe

The Inverse Universe completely reimagines the original color for something new.



62.2023, 0.2877, 0.3126



80.5290, 0.2830, 0.3091



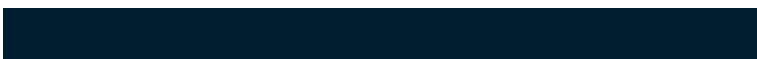
53.8679, 0.2868, 0.2910



14.6328, 0.2981, 0.3197



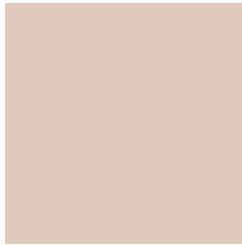
13.7924, 0.1881, 0.1971



1.1283, 0.1944, 0.2196

Previews

White Background



This preview shows how the Yxy color 61.7192, 0.3406, 0.3449 looks on a white background.

Color Contrast Check

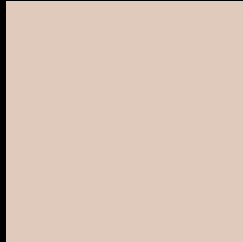
Large Text (above 18pt) WCAG AA × Fail

Any Text WCAG AA × Fail

Large Text (above 18pt) WCAG AAA × Fail

Any Text WCAG AAA × Fail

Black Background



This preview shows how the Yxy color 61.7192, 0.3406, 0.3449 looks on a black background.

Color Contrast Check

Large Text (above 18pt) WCAG AA ✓ Pass

Any Text WCAG AA ✓ Pass

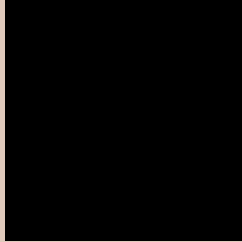
Large Text (above 18pt) WCAG AAA ✓ Pass

Any Text WCAG AAA ✓ Pass

If you want to check with other color combinations, try the [Color Contrast Checker](#).

Yxy 61.7192, 0.3406, 0.3449

Background



This preview shows how black text looks on a background with the Yxy color 61.7192, 0.3406, 0.3449.



This preview shows how white text looks on a background with the Yxy color 61.7192, 0.3406, 0.3449.

Color Blindness Simulation

Color vision deficiency is a very complex topic, and I could not describe the different causes any better than Wikipedia does, so if you want to learn more, you should check out their [article about color blindness](#).

Dichromacy



Original Color

61.7192, 0.3406, 0.3449

Protanopia

61.6765, 0.3306, 0.3464

Deuteranopia

61.6768, 0.3469, 0.3402



Tritanopia

61.5741, 0.3238, 0.3114

Trichromacy



Original Color

61.7192, 0.3406, 0.3449

Protanomaly

61.7653, 0.3346, 0.3463

Deuteranomaly

61.6407, 0.3442, 0.3414

Tritanomaly

61.4234, 0.3296, 0.3224

Monochromacy



Original Color

61.7192, 0.3406, 0.3449

Achromatopsia

62.3960, 0.3127, 0.3290

Achromatomaly

61.9789, 0.3224, 0.3348

CSS Examples

Text

The CSS property to change the color of the text to Yxy 61.7192, 0.3406, 0.3449 is called "color". The color property can be set on classes, ids or directly on the HTML element.

This example shows how text in the color `rgb(224, 202, 188)` looks like.

```
.text, #text, p{  
    color:rgb(224, 202, 188)  
}
```

If you want to add a text shadow in that color use the text-shadow property, you can generate a text shadow directly with our [CSS Text Shadow Generator](#).

Here you see how black text with a 4 pixel rgb(224, 202, 188) colored shadow looks like.

```
.shadow{ text-shadow: 4px 4px 2px rgb(224, 202, 188) }
```

Border

The CSS property to change the border of an element to Yxy 61.7192, 0.3406, 0.3449 is called "border". The border property can be set on classes, ids or directly on the HTML element.

This example shows the color as border, it can be applied via the CSS property "border" or "border-color".

```
.border, #border, table{ border:4px solid rgb(224, 202, 188) }
```

If only the border color should be changed use the property border-color.

```
.border{ border-color:rgb(224, 202, 188) }
```

If you want to add a box shadow in that color use:

Here you see how a box with a 4 pixel rgb(224, 202, 188) colored shadow looks like.

```
.boxshadow{ -moz-box-shadow:4px 4px 4px  
4px rgb(224, 202, 188); -webkit-box-  
shadow:4px 4px 4px 4px rgb(224, 202, 188);  
box-shadow:4px 4px 4px 4px rgb(224, 202,  
188) }
```


Background

The CSS property to change the background color of an element to Yxy 61.7192, 0.3406, 0.3449 is called "background". The background property can be set on classes, ids or directly on the HTML element.

```
.background, #background, body{  
background: rgb(224, 202, 188) }
```

If only the background color should be changed can be used:

```
.background{ background-color: rgb(224,  
202, 188) }
```

This example shows the color as background, it is applied via the CSS property "background".

To optimize and compress your CSS code, you can use our [online CSS compressor and optimizer](#) based on csstidy. If you want to create a linear or radial gradient as background or border, check our [CSS Gradient Generator](#).

Hey! You found this booklet interesting? Support Converting Colors with the new Membership Option!

The pro membership hides all ads, plus gives you double the colors in the color bucket, and more awesome pro features!

[Learn more, Memberships starting at \\$2.50/m!](#)

**Follow me
on Twitter!**

@ConvertingColor