

# Converting Colors

Yxy(62.0252, 0.3369, 0.3473)

Have a look what the booklet for  
Yxy(62.0252, 0.3369, 0.3473)  
contains.

<b>Yxy(62.0322, 0.3370, 0.3473)</b> .....	3
<b>Conversions</b> .....	4
<b>Details</b> .....	6
<b>Harmonies</b> .....	12
<b>Previews</b> .....	24
<b>Color Blindness Simulation</b> .....	27
<b>CSS Examples</b> .....	30

# Color

**Yxy(62.0322, 0.3370, 0.3473)**

# Conversions

## Conversions Part 1

Format	Color
Hex	DCCCBC
RGB	220, 204, 188
RGB Percent	86%, 80%, 74%
CMY	0.1372, 0.2000, 0.2627
CMYK	0.00, 0.07, 0.15, 0.14
HSL	30°, 31%, 80%
HSV	30°, 15%, 86%
XYZ	60.1925, 62.0322, 56.3880
YIQ	206.9600, 14.6720, -1.5840

# Conversions

## Conversions Part 2

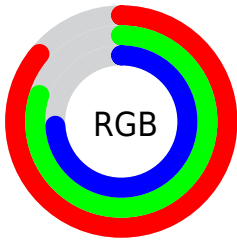
Format	Color
R <sub>Y</sub> B	220, 220, 188
Decimal	14470332
CIE Lab	82.93, 2.95, 9.96
CIE LCh	83, 10.388, 73.494
Yxy	62.0322, 0.3370, 0.3473
Android (android.graphics.Color)	4292660412 (0xFFDCCCBC)
YUV	206.9600, -9.3473, 11.4361
Hunter-Lab	78.7605, -1.4128, 12.6841

# Details

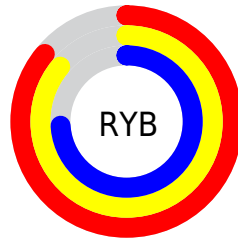
The Yxy color **62.0322, 0.3370, 0.3473** is a light color, and the websafe version is hex **CCCCCC**. A complement of this color would be **59.0724, 0.2900, 0.3100**, and the grayscale version is **62.4281, 0.3127, 0.3290**.

A 20% lighter version of the original color is **99.3117, 0.3191, 0.3396**, and **31.5613, 0.3431, 0.3517** is the 20% darker color. If you saturate the color by 10%, you get **56.1024, 0.3566, 0.3606**, and if you desaturate by 10%, it is **68.4829, 0.3198, 0.3345**.

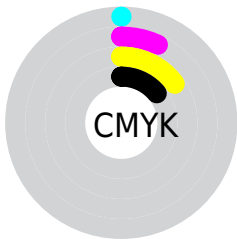
# Distribution



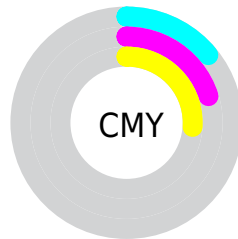
- Red (86%)
- Green (80%)
- Blue (74%)



- Red (86%)
- Yellow (86%)
- Blue (74%)



- Cyan (0%)
- Magenta (7%)
- Yellow (15%)
- Black (14%)




- Cyan (14%)
- Magenta (20%)
- Yellow (26%)


# Brightness & Saturation Gradients

These gradients show how the Yxy color 62.0322, 0.3370, 0.3473 changes by changing the brightness by 10 percent. The first figure shows a shift by +10% for each color and the second figure -10%.


Similar to the brightness gradients but the following saturation gradients show a change of the Yxy color 62.0322, 0.3370, 0.3473 by changing the saturation by 10% instead.




 62.0322, 0.3370,  
0.3473

 62.0322, 0.3370,  
0.3473

432.0485, 0.3254,  
0.3387

 45.0587, 0.3397,  
0.3493


 107.7721, 0.3329,  
0.3443

 31.5037, 0.3432,  
0.3518


137.3072, 0.3313,  
0.3431

 20.9827, 0.3476,  
0.3551


171.7984, 0.3300,  
0.3421

 13.1113, 0.3536,  
0.3593

211.6300, 0.3288,  
0.3412

 7.5053, 0.3619,  
0.3652

257.1865, 0.3278,  
0.3405

 3.7800, 0.3745,  
0.3740

308.8521, 0.3269,

 1.5513, 0.3959,

0.3398

0.3883

367.0113, 0.3261,  
0.3392

0.3244, 0.5397,  
0.4603

0.0000, 0.0000,  
0.0000

62.0322, 0.3370,  
0.3473

62.0322, 0.3370,  
0.3473

56.1024, 0.3566,  
0.3606

68.4829, 0.3198,  
0.3345

50.6711, 0.3787,  
0.3742

75.4597, 0.3048,  
0.3226

45.7261, 0.4031,  
0.3874

82.9784, 0.2917,  
0.3115

41.2518, 0.4296,  
0.3993

89.6218, 0.2915,  
0.3219

■ 37.2311, 0.4572,  
0.4089

■ 93.9598, 0.2917,  
0.3289

■ 33.6459, 0.4846,  
0.4148

■ 30.4760, 0.5101,  
0.4159

■ 27.6985, 0.5320,  
0.4114

■ 26.3334, 0.5426,  
0.4073

# Harmonies

## Analogous

The Analogous color harmony consists of three colors that are next to each other on the color wheel.



62.0322, 0.3385, 0.3379



62.0322, 0.3370, 0.3473



62.0322, 0.3289, 0.3520

# Triad

The Triadic color harmony groups three colors that are evenly spaced from another and form a triangle on the color wheel.



62.0322, 0.3370, 0.3473



62.0322, 0.2928, 0.3311



62.0322, 0.3085, 0.3088

# Complementary

The Complementary color scheme is a pair of colors which are on the opposite of each other on the color wheel.



62.0322, 0.3370, 0.3473



59.0724, 0.2900, 0.3100

# Split Complementary

Split-complementary colors differ from the complementary color scheme. The scheme consists of three colors, the original color and two neighbors of the complement color.



62.0322, 0.2965, 0.3067



62.0322, 0.3370, 0.3473



62.0322, 0.2876, 0.3192

# Square

The Square scheme is like the rectangle color scheme, but the four colors are evenly spaced on the color wheel.



62.0322, 0.3370, 0.3473



62.0322, 0.3034, 0.3426



62.0322, 0.2889, 0.3104



62.0322, 0.3218, 0.3160



# Rectangle

The Rectangle color scheme consists of four colors that form a rectangle on the color wheel.



62.0322, 0.3370, 0.3473



62.0322, 0.3209, 0.3516



62.0322, 0.2889, 0.3104



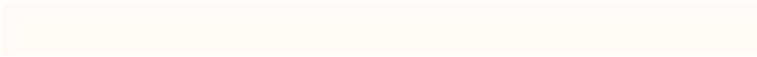
62.0322, 0.3042, 0.3074

# Sweetspot

The Sweet Spot groups the original color and five complimentary colors.



62.0350, 0.3370, 0.3473



96.1440, 0.3190, 0.3339



55.5809, 0.3264, 0.3102



20.4264, 0.3202, 0.3349



0.0000, 0.0000, 0.0000



21.4041, 0.3127, 0.3290

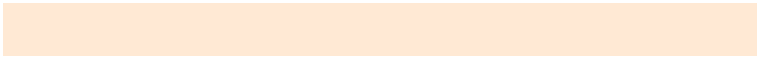


# Same Dimension

The Same Dimension uses a secret algorithm to generate beautiful new colors.



62.0350, 0.3370, 0.3473



84.4365, 0.3418, 0.3507



69.7722, 0.3345, 0.3643



14.1199, 0.3279, 0.3407



15.6736, 0.5403, 0.4092



1.1878, 0.5154, 0.4290

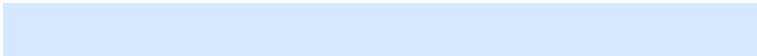


# Inverse Universe

The Inverse Universe completely reimagines the original color for something new.



59.0724, 0.2900, 0.3100



79.6484, 0.2859, 0.3063



52.0657, 0.2894, 0.2911



13.6894, 0.2982, 0.3170



9.8248, 0.1775, 0.1588

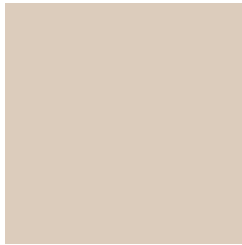


0.8089, 0.1857, 0.1883



# Previews

## White Background



This preview shows how the Yxy color 62.0322, 0.3370, 0.3473 looks on a white background.

## Color Contrast Check

Large Text (above 18pt) WCAG AA × Fail

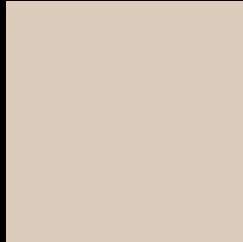
Any Text WCAG AA × Fail

Large Text (above 18pt) WCAG AAA × Fail

Any Text WCAG AAA × Fail



# Black Background



This preview shows how the Yxy color 62.0322, 0.3370, 0.3473 looks on a black background.

## Color Contrast Check

Large Text (above 18pt) WCAG AA ✓ Pass

Any Text WCAG AA ✓ Pass

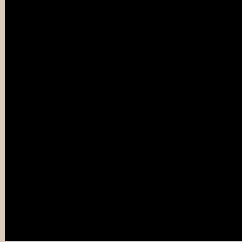
Large Text (above 18pt) WCAG AAA ✓ Pass

Any Text WCAG AAA ✓ Pass

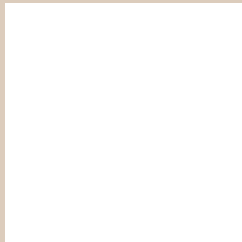
If you want to check with other color combinations, try the [Color Contrast Checker](#).

**Yxy 62.0322, 0.3370, 0.3473**

## Background



This preview shows how black text looks on a background with the Yxy color 62.0322, 0.3370, 0.3473.



This preview shows how white text looks on a background with the Yxy color 62.0322, 0.3370, 0.3473.

# Color Blindness Simulation

Color vision deficiency is a very complex topic, and I could not describe the different causes any better than Wikipedia does, so if you want to learn more, you should check out their [article about color blindness](#).

## Dichromacy



### Original Color

62.0322, 0.3370, 0.3473

### Protanopia

62.1129, 0.3312, 0.3487

### Deuteranopia

61.8446, 0.3477, 0.3402



## Tritanopia

62.1137, 0.3198, 0.3114

# Trichromacy



## Original Color

62.0322, 0.3370, 0.3473

## Protanomaly

61.9357, 0.3329, 0.3475

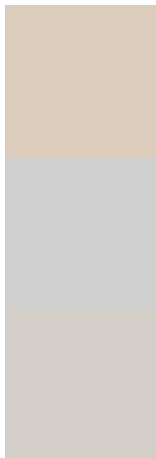
## Deuteranomaly

61.9414, 0.3432, 0.3425

## Tritanomaly

61.9175, 0.3263, 0.3235

# Monochromacy



## Original Color

62.0322, 0.3370, 0.3473

## Achromatopsia

62.3960, 0.3127, 0.3290

## Achromatomaly

62.3098, 0.3216, 0.3359

# CSS Examples

## Text

The CSS property to change the color of the text to Yxy 62.0322, 0.3370, 0.3473 is called "color". The color property can be set on classes, ids or directly on the HTML element.

This example shows how text in the color `rgb(220, 204, 188)` looks like.

```
.text, #text, p{  
    color:rgb(220, 204, 188)  
}
```

If you want to add a text shadow in that color use the text-shadow property, you can generate a text shadow directly with our [CSS Text Shadow Generator](#).

Here you see how black text with a 4 pixel rgb(220, 204, 188) colored shadow looks like.

```
.shadow{ text-shadow: 4px 4px 2px rgb(220, 204, 188) }
```

## Border

The CSS property to change the border of an element to Yxy 62.0322, 0.3370, 0.3473 is called "border". The border property can be set on classes, ids or directly on the HTML element.

This example shows the color as border, it can be applied via the CSS property "border" or "border-color".

```
.border, #border, table{ border:4px solid rgb(220, 204, 188) }
```

If only the border color should be changed use the property `border-color`.

```
.border{ border-color:rgb(220, 204, 188) }
```

If you want to add a box shadow in that color use:

Here you see how a box with a 4 pixel `rgb(220, 204, 188)` colored shadow looks like.

```
.boxshadow{ -moz-box-shadow:4px 4px 4px 4px rgb(220, 204, 188); -webkit-box-shadow:4px 4px 4px 4px rgb(220, 204, 188); box-shadow:4px 4px 4px 4px rgb(220, 204, 188) }
```



# Background

The CSS property to change the background color of an element to Yxy 62.0322, 0.3370, 0.3473 is called "background". The background property can be set on classes, ids or directly on the HTML element.

```
.background, #background, body{  
background: rgb(220, 204, 188) }
```

If only the background color should be changed can be used:

```
.background{ background-color: rgb(220,  
204, 188) }
```

This example shows the color as background, it is applied via the CSS property "background".

To optimize and compress your CSS code, you can use our [online CSS compressor and optimizer](#) based on csstidy. If you want to create a linear or radial gradient as background or border, check our [CSS Gradient Generator](#).

Hey! You found this booklet interesting? Support Converting Colors with the new Membership Option!

The pro membership hides all ads, plus gives you double the colors in the color bucket, and more awesome pro features!

**[Learn more, Memberships starting at \\$2.50/m!](#)**

**Follow me  
on Twitter!**

@ConvertingColor