

Converting Colors

$Yxy(62.1205, 0.3377, 0.3344)$

Have a look what the booklet for
Yxy(62.1205, 0.3377, 0.3344)
contains.

Yxy(62.2528, 0.3378, 0.3346)	3
<i>Conversions</i>	4
<i>Details</i>	6
<i>Harmonies</i>	12
<i>Previews</i>	24
<i>Color Blindness Simulation</i>	27
<i>CSS Examples</i>	30

Color

Yxy(62.2528, 0.3378, 0.3346)

Conversions

Conversions Part 1

Format	Color
Hex	E4C9C4
RGB	228, 201, 196
RGB Percent	89%, 79%, 77%
CMY	0.1059, 0.2118, 0.2312
CMYK	0.00, 0.12, 0.14, 0.11
HSL	9°, 37%, 83%
HSV	9°, 14%, 89%
XYZ	62.8482, 62.2528, 60.9504
YIQ	208.5030, 17.6970, 4.1690

Conversions

Conversions Part 2

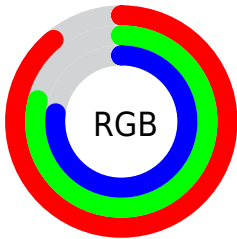
Format	Color
R_{YB}	228, 202, 196
Decimal	14993860
CIE Lab	83.05, 8.67, 5.94
CIE LCh	83, 10.511, 34.424
Yxy	62.2528, 0.3378, 0.3346
Android (android.graphics.Color)	4293183940 (0xFFE4C9C4)
YUV	208.5030, -6.1640, 17.0989
Hunter-Lab	78.9004, 4.1084, 9.4289

Details

The Yxy color **62.2528, 0.3378, 0.3346** is a light color, and the websafe version is hex **FFCCCC**. A complement of this color would be **70.1360, 0.2912, 0.3233**, and the grayscale version is **63.4551, 0.3127, 0.3290**.

A 20% lighter version of the original color is **99.8718, 0.3139, 0.3309**, and **31.5911, 0.3443, 0.3364** is the 20% darker color. If you saturate the color by 10%, you get **52.8713, 0.3605, 0.3389**, and if you desaturate by 10%, it is **72.9234, 0.3192, 0.3305**.

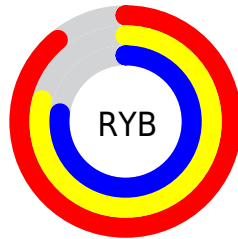
Distribution



Red (89%)

Green (79%)

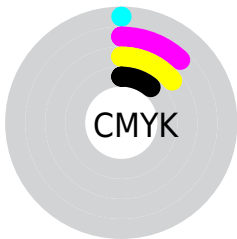
Blue (77%)



Red (89%)

Yellow (79%)

Blue (77%)

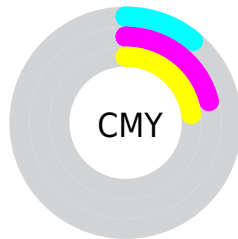


Cyan (0%)

Magenta (12%)

Yellow (14%)

Black (11%)



Cyan (11%)

Magenta (21%)


Yellow (23%)

Brightness & Saturation Gradients


These gradients show how the Yxy color 62.2528, 0.3378, 0.3346 changes by changing the brightness by 10 percent. The first figure shows a shift by +10% for each color and the second figure -10%.

Similar to the brightness gradients but the following saturation gradients show a change of the Yxy color 62.2528, 0.3378, 0.3346 by changing the saturation by 10% instead.

 62.2528, 0.3378,
0.3346

 62.2528, 0.3378,
0.3346


432.8526, 0.3258,
0.3321

 45.2370, 0.3406,
0.3352


108.0908, 0.3336,
0.3337

 31.6441, 0.3442,
0.3359


137.6818, 0.3319,
0.3334

 21.0898, 0.3488,
0.3367


172.2333, 0.3305,
0.3331

 13.1897, 0.3550,
0.3378

212.1298, 0.3293,
0.3328

 7.5593, 0.3638,
0.3393

257.7555, 0.3283,
0.3326

 3.8143, 0.3771,
0.3413

309.4950, 0.3274,

 1.5702, 0.3996,

0.3324

0.3440

367.7326, 0.3265,
0.3322

0.3374, 0.6121,
0.3879

0.0000, 0.0000,
0.0000

62.2528, 0.3378,
0.3346

62.2528, 0.3378,
0.3346

52.8713, 0.3605,
0.3389

72.9234, 0.3192,
0.3305

44.7220, 0.3880,
0.3433

84.9207, 0.3040,
0.3268

37.7559, 0.4208,
0.3475

95.2337, 0.2964,
0.3290

31.9177, 0.4590,
0.3510

■ 27.1476, 0.5013,
0.3531

■ 23.3802, 0.5446,
0.3530

■ 20.5428, 0.5841,
0.3501

■ 18.5522, 0.6141,
0.3443

■ 17.7202, 0.6267,
0.3406

Harmonies

Analogous

The Analogous color harmony consists of three colors that are next to each other on the color wheel.



62.2528, 0.3302, 0.3230



62.2528, 0.3378, 0.3346



62.2528, 0.3385, 0.3450

Triad

The Triadic color harmony groups three colors that are evenly spaced from another and form a triangle on the color wheel.



62.2528, 0.3378, 0.3346



62.2528, 0.3072, 0.3457



62.2528, 0.2934, 0.3070

Complementary

The Complementary color scheme is a pair of colors which are on the opposite of each other on the color wheel.



62.2528, 0.3378, 0.3346



70.1360, 0.2912, 0.3233

Split Complementary

Split-complementary colors differ from the complementary color scheme. The scheme consists of three colors, the original color and two neighbors of the complement color.



62.2528, 0.2876, 0.3124



62.2528, 0.3378, 0.3346



62.2528, 0.2954, 0.3348

Square

The Square scheme is like the rectangle color scheme, but the four colors are evenly spaced on the color wheel.



62.2528, 0.3378, 0.3346



62.2528, 0.3206, 0.3518



62.2528, 0.2883, 0.3226



62.2528, 0.3045, 0.3073

Rectangle

The Rectangle color scheme consists of four colors that form a rectangle on the color wheel.



62.2528, 0.3378, 0.3346



62.2528, 0.3350, 0.3499



62.2528, 0.2883, 0.3226



62.2528, 0.2908, 0.3082

Sweetspot

The Sweet Spot groups the original color and five complimentary colors.



62.2556, 0.3378, 0.3346



93.9859, 0.3192, 0.3305



61.3298, 0.3178, 0.2995



19.8814, 0.3205, 0.3308



0.0000, 0.0000, 0.0000



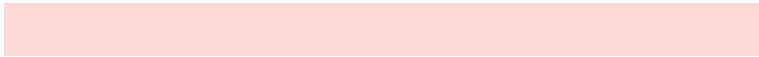
21.4041, 0.3127, 0.3290

Same Dimension

The Same Dimension uses a secret algorithm to generate beautiful new colors.



62.2556, 0.3378, 0.3346



76.3375, 0.3443, 0.3359



70.0101, 0.3353, 0.3518



14.7275, 0.3289, 0.3327



10.3417, 0.6247, 0.3421



0.8758, 0.5998, 0.3620

Inverse Universe

The Inverse Universe completely reimagines the original color for something new.



70.1360, 0.2912, 0.3233



88.4642, 0.2866, 0.3220



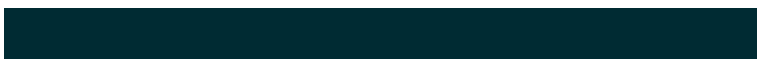
62.0769, 0.2907, 0.3051



15.9350, 0.2981, 0.3253



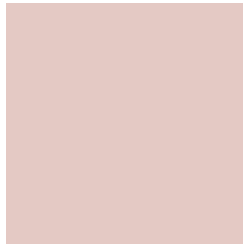
25.2955, 0.2108, 0.2790



1.9725, 0.2131, 0.2870

Previews

White Background



This preview shows how the Yxy color 62.2528, 0.3378, 0.3346 looks on a white background.

Color Contrast Check

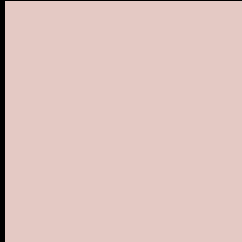
Large Text (above 18pt) WCAG AA × Fail

Any Text WCAG AA × Fail

Large Text (above 18pt) WCAG AAA × Fail

Any Text WCAG AAA × Fail

Black Background



This preview shows how the Yxy color 62.2528, 0.3378, 0.3346 looks on a black background.

Color Contrast Check

Large Text (above 18pt) WCAG AA ✓ Pass

Any Text WCAG AA ✓ Pass

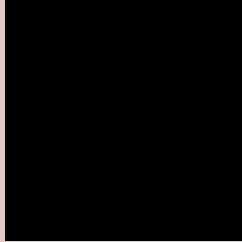
Large Text (above 18pt) WCAG AAA ✓ Pass

Any Text WCAG AAA ✓ Pass

If you want to check with other color combinations, try the [Color Contrast Checker](#).

Yxy 62.2528, 0.3378, 0.3346

Background



This preview shows how black text looks on a background with the Yxy color 62.2528, 0.3378, 0.3346.



This preview shows how white text looks on a background with the Yxy color 62.2528, 0.3378, 0.3346.

Color Blindness Simulation

Color vision deficiency is a very complex topic, and I could not describe the different causes any better than Wikipedia does, so if you want to learn more, you should check out their [article about color blindness](#).

Dichromacy



Original Color

62.2528, 0.3378, 0.3346

Protanopia

62.4123, 0.3231, 0.3371

Deuteranopia

62.2830, 0.3404, 0.3335



Tritanopia

62.0662, 0.3261, 0.3116

Trichromacy



Original Color

62.2528, 0.3378, 0.3346

Protanomaly

62.1684, 0.3279, 0.3359

Deuteranomaly

62.1171, 0.3396, 0.3335

Tritanomaly

62.0099, 0.3305, 0.3202

Monochromacy



Original Color

62.2528, 0.3378, 0.3346

Achromatopsia

63.7597, 0.3127, 0.3290

Achromatomaly

63.1012, 0.3218, 0.3313

CSS Examples

Text

The CSS property to change the color of the text to Yxy 62.2528, 0.3378, 0.3346 is called "color". The color property can be set on classes, ids or directly on the HTML element.

This example shows how text in the color `rgb(228, 201, 196)` looks like.

```
.text, #text, p{  
    color:rgb(228, 201, 196)  
}
```

If you want to add a text shadow in that color use the text-shadow property, you can generate a text shadow directly with our [CSS Text Shadow Generator](#).

Here you see how black text with a 4 pixel rgb(228, 201, 196) colored shadow looks like.

```
.shadow{ text-shadow: 4px 4px 2px rgb(228, 201, 196) }
```

Border

The CSS property to change the border of an element to Yxy 62.2528, 0.3378, 0.3346 is called "border". The border property can be set on classes, ids or directly on the HTML element.

This example shows the color as border, it can be applied via the CSS property "border" or "border-color".

```
.border, #border, table{ border:4px solid rgb(228, 201, 196) }
```

If only the border color should be changed use the property `border-color`.

```
.border{ border-color:rgb(228, 201, 196) }
```

If you want to add a box shadow in that color use:

Here you see how a box with a 4 pixel `rgb(228, 201, 196)` colored shadow looks like.

```
.boxshadow{ -moz-box-shadow:4px 4px 4px  
4px rgb(228, 201, 196); -webkit-box-  
shadow:4px 4px 4px 4px rgb(228, 201, 196);  
box-shadow:4px 4px 4px 4px rgb(228, 201,  
196) }
```


Background

The CSS property to change the background color of an element to Yxy 62.2528, 0.3378, 0.3346 is called "background". The background property can be set on classes, ids or directly on the HTML element.

```
.background, #background, body{  
background: rgb(228, 201, 196) }
```

If only the background color should be changed can be used:

```
.background{ background-color: rgb(228,  
201, 196) }
```

This example shows the color as background, it is applied via the CSS property "background".

To optimize and compress your CSS code, you can use our [online CSS compressor and optimizer](#) based on csstidy. If you want to create a linear or radial gradient as background or border, check our [CSS Gradient Generator](#).

Hey! You found this booklet interesting? Support Converting Colors with the new Membership Option!

The pro membership hides all ads, plus gives you double the colors in the color bucket, and more awesome pro features!

[Learn more, Memberships starting at \\$2.50/m!](#)

**Follow me
on Twitter!**

@ConvertingColor