

Converting Colors

$Yxy(62.1973, 0.3363, 0.3429)$

Have a look what the booklet for
Yxy(62.1973, 0.3363, 0.3429)
contains.

Yxy(62.0031, 0.3365, 0.3427)	3
Conversions	4
Details	6
Harmonies	12
Previews	24
Color Blindness Simulation	27
CSS Examples	30

Color

Yxy(62.0031, 0.3365, 0.3427)

Conversions

Conversions Part 1

Format	Color
Hex	DECBBF
RGB	222, 203, 191
RGB Percent	87%, 80%, 75%
CMY	0.1294, 0.2039, 0.2510
CMYK	0.00, 0.09, 0.14, 0.13
HSL	23°, 32%, 81%
HSV	23°, 14%, 87%
XYZ	60.8814, 62.0031, 58.0408
YIQ	207.3130, 15.1760, 0.2960

Conversions

Conversions Part 2

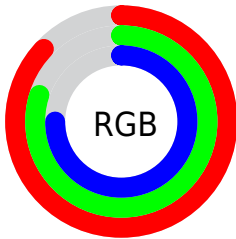
Format	Color
R _Y B	222, 211, 191
Decimal	14601151
CIE Lab	82.92, 4.65, 8.38
CIE LCh	83, 9.583, 60.972
Yxy	62.0031, 0.3365, 0.3427
Android (android.graphics.Color)	4292791231 (0xFFDECBBF)
YUV	207.3130, -8.0423, 12.8805
Hunter-Lab	78.7420, 0.2131, 11.4167

Details

The Yxy color **62.0031, 0.3365, 0.3427** is a light color, and the websafe version is hex **CCCCCC**. A complement of this color would be **62.4278, 0.2911, 0.3149**, and the grayscale version is **62.6553, 0.3127, 0.3290**.

A 20% lighter version of the original color is **99.4954, 0.3173, 0.3367**, and **31.5454, 0.3425, 0.3455** is the 20% darker color. If you saturate the color by 10%, you get **54.9600, 0.3570, 0.3532**, and if you desaturate by 10%, it is **69.7627, 0.3190, 0.3328**.

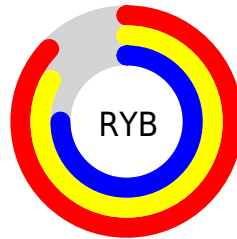
Distribution



Red (87%)

Green (80%)

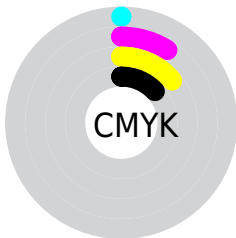
Blue (75%)



Red (87%)

Yellow (83%)

Blue (75%)

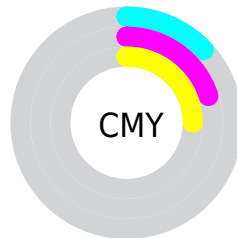


Cyan (0%)

Magenta (9%)

Yellow (14%)

Black (13%)



Cyan (13%)


Magenta (20%)


Yellow (25%)

Brightness & Saturation Gradients


These gradients show how the Yxy color 62.0031, 0.3365, 0.3427 changes by changing the brightness by 10 percent. The first figure shows a shift by +10% for each color and the second figure -10%.

Similar to the brightness gradients but the following saturation gradients show a change of the Yxy color 62.0031, 0.3365, 0.3427 by changing the saturation by 10% instead.

 62.0031, 0.3365,
0.3427

 62.0031, 0.3365,
0.3427

431.9424, 0.3251,
0.3363

 45.0352, 0.3392,
0.3442


 107.7300, 0.3325,
0.3405

 31.4852, 0.3426,
0.3460


137.2578, 0.3309,
0.3396

 20.9686, 0.3470,
0.3484


171.7410, 0.3296,
0.3388

 13.1010, 0.3528,
0.3515

211.5641, 0.3285,
0.3382

 7.4981, 0.3611,
0.3558

257.1114, 0.3275,
0.3376

 3.7755, 0.3736,
0.3621

308.7672, 0.3266,

 1.5488, 0.3947,

0.3371

366.9161, 0.3258,
0.3367

0.3721

0.3227, 0.5656,
0.4344

0.0000, 0.0000,
0.0000

62.0031, 0.3365,
0.3427

62.0031, 0.3365,
0.3427

54.9600, 0.3570,
0.3532

69.7627, 0.3190,
0.3328

48.6042, 0.3806,
0.3638

78.2507, 0.3040,
0.3235

42.9163, 0.4076,
0.3742

87.3214, 0.2926,
0.3175

37.8728, 0.4377,
0.3835

94.2687, 0.2929,
0.3289

■ 33.4489, 0.4700,
0.3907

■ 29.6177, 0.5030,
0.3944

■ 26.3498, 0.5343,
0.3935

■ 23.6124, 0.5612,
0.3872

■ 22.1956, 0.5751,
0.3815

Harmonies

Analogous

The Analogous color harmony consists of three colors that are next to each other on the color wheel.



62.0031, 0.3351, 0.3329



62.0031, 0.3365, 0.3427



62.0031, 0.3314, 0.3491

Triad

The Triadic color harmony groups three colors that are evenly spaced from another and form a triangle on the color wheel.



62.0031, 0.3365, 0.3427



62.0031, 0.2979, 0.3356



62.0031, 0.3039, 0.3089

Complementary

The Complementary color scheme is a pair of colors which are on the opposite of each other on the color wheel.



62.0031, 0.3365, 0.3427



62.4278, 0.2911, 0.3149

Split Complementary

Split-complementary colors differ from the complementary color scheme. The scheme consists of three colors, the original color and two neighbors of the complement color.



62.0031, 0.2942, 0.3092



62.0031, 0.3365, 0.3427



62.0031, 0.2908, 0.3244

Square

The Square scheme is like the rectangle color scheme, but the four colors are evenly spaced on the color wheel.



62.0031, 0.3365, 0.3427



62.0031, 0.3090, 0.3451



62.0031, 0.2895, 0.3148



62.0031, 0.3161, 0.3137

Rectangle

The Rectangle color scheme consists of four colors that form a rectangle on the color wheel.



62.0031, 0.3365, 0.3427



62.0031, 0.3251, 0.3504



62.0031, 0.2895, 0.3148



62.0031, 0.3002, 0.3084

Sweetspot

The Sweet Spot groups the original color and five complimentary colors.



62.0059, 0.3365, 0.3427



95.4402, 0.3191, 0.3328



57.4432, 0.3233, 0.3075



20.2485, 0.3203, 0.3336



0.0000, 0.0000, 0.0000



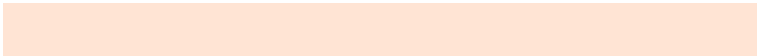
21.4041, 0.3127, 0.3290

Same Dimension

The Same Dimension uses a secret algorithm to generate beautiful new colors.



62.0059, 0.3365, 0.3427



81.7347, 0.3426, 0.3460



69.6281, 0.3341, 0.3596



14.5676, 0.3282, 0.3381



13.3850, 0.5725, 0.3836



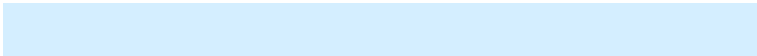
1.0979, 0.5439, 0.4063

Inverse Universe

The Inverse Universe completely reimagines the original color for something new.



62.4278, 0.2911, 0.3149



82.4263, 0.2861, 0.3114



55.2015, 0.2905, 0.2965



14.6333, 0.2981, 0.3197



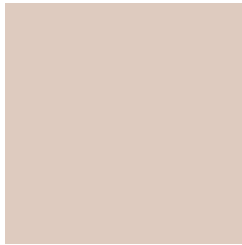
13.8011, 0.1881, 0.1972



1.1288, 0.1944, 0.2197

Previews

White Background



This preview shows how the Yxy color 62.0031, 0.3365, 0.3427 looks on a white background.

Color Contrast Check

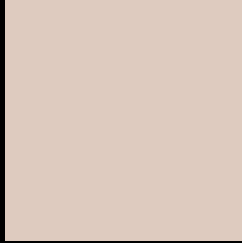
Large Text (above 18pt) WCAG AA × Fail

Any Text WCAG AA × Fail

Large Text (above 18pt) WCAG AAA × Fail

Any Text WCAG AAA × Fail

Black Background



This preview shows how the Yxy color 62.0031, 0.3365, 0.3427 looks on a black background.

Color Contrast Check

Large Text (above 18pt) WCAG AA ✓ Pass

Any Text WCAG AA ✓ Pass

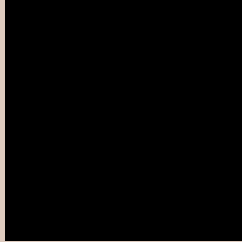
Large Text (above 18pt) WCAG AAA ✓ Pass

Any Text WCAG AAA ✓ Pass

If you want to check with other color combinations, try the [Color Contrast Checker](#).

Yxy 62.0031, 0.3365, 0.3427

Background



This preview shows how black text looks on a background with the Yxy color 62.0031, 0.3365, 0.3427.



This preview shows how white text looks on a background with the Yxy color 62.0031, 0.3365, 0.3427.

Color Blindness Simulation

Color vision deficiency is a very complex topic, and I could not describe the different causes any better than Wikipedia does, so if you want to learn more, you should check out their [article about color blindness](#).

Dichromacy



Original Color

62.0031, 0.3365, 0.3427

Protanopia

62.2445, 0.3290, 0.3452

Deuteranopia

61.8084, 0.3445, 0.3368



Tritanopia

61.7607, 0.3213, 0.3114

Trichromacy



Original Color

62.0031, 0.3365, 0.3427

Protanomaly

62.2201, 0.3315, 0.3439

Deuteranomaly

61.6083, 0.3411, 0.3380

Tritanomaly

61.6121, 0.3272, 0.3223

Monochromacy



Original Color

62.0031, 0.3365, 0.3427

Achromatopsia

62.3960, 0.3127, 0.3290

Achromatomaly

62.3567, 0.3209, 0.3348

CSS Examples

Text

The CSS property to change the color of the text to Yxy 62.0031, 0.3365, 0.3427 is called "color". The color property can be set on classes, ids or directly on the HTML element.

This example shows how text in the color `rgb(222, 203, 191)` looks like.

```
.text, #text, p{  
    color:rgb(222, 203, 191)  
}
```

If you want to add a text shadow in that color use the text-shadow property, you can generate a text shadow directly with our [CSS Text Shadow Generator](#).

Here you see how black text with a 4 pixel rgb(222, 203, 191) colored shadow looks like.

```
.shadow{ text-shadow: 4px 4px 2px rgb(222, 203, 191) }
```

Border

The CSS property to change the border of an element to Yxy 62.0031, 0.3365, 0.3427 is called "border". The border property can be set on classes, ids or directly on the HTML element.

This example shows the color as border, it can be applied via the CSS property "border" or "border-color".

```
.border, #border, table{ border:4px solid rgb(222, 203, 191) }
```

If only the border color should be changed use the property border-color.

```
.border{ border-color:rgb(222, 203, 191) }
```

If you want to add a box shadow in that color use:

Here you see how a box with a 4 pixel rgb(222, 203, 191) colored shadow looks like.

```
.boxshadow{ -moz-box-shadow:4px 4px 4px  
4px rgb(222, 203, 191); -webkit-box-  
shadow:4px 4px 4px 4px rgb(222, 203, 191);  
box-shadow:4px 4px 4px 4px rgb(222, 203,  
191) }
```


Background

The CSS property to change the background color of an element to Yxy 62.0031, 0.3365, 0.3427 is called "background". The background property can be set on classes, ids or directly on the HTML element.

```
.background, #background, body{  
background: rgb(222, 203, 191) }
```

If only the background color should be changed can be used:

```
.background{ background-color: rgb(222,  
203, 191) }
```

This example shows the color as background, it is applied via the CSS property "background".

To optimize and compress your CSS code, you can use our [online CSS compressor and optimizer](#) based on csstidy. If you want to create a linear or radial gradient as background or border, check our [CSS Gradient Generator](#).

Hey! You found this booklet interesting? Support Converting Colors with the new Membership Option!

The pro membership hides all ads, plus gives you double the colors in the color bucket, and more awesome pro features!

[Learn more, Memberships starting at \\$2.50/m!](#)

**Follow me
on Twitter!**

@ConvertingColor