

Converting Colors

$Yxy(62.4217, 0.3477, 0.3549)$

Have a look what the booklet for
Yxy(62.4217, 0.3477, 0.3549)
contains.

Yxy(62.2168, 0.3474, 0.3539)	3
<i>Conversions</i>	4
<i>Details</i>	6
<i>Harmonies</i>	12
<i>Previews</i>	24
<i>Color Blindness Simulation</i>	27
<i>CSS Examples</i>	30

Color

Yxy(62.2168, 0.3474, 0.3539)

Conversions

Conversions Part 1

Format	Color
Hex	E2CBB5
RGB	226, 203, 181
RGB Percent	89%, 80%, 71%
CMY	0.1135, 0.2040, 0.2901
CMYK	0.00, 0.10, 0.20, 0.11
HSL	29°, 44%, 80%
HSV	29°, 20%, 89%
XYZ	61.0741, 62.2168, 52.5125
YIQ	207.3690, 20.7700, -1.9660

Conversions

Conversions Part 2

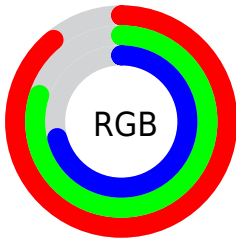
Format	Color
R _Y B	226, 224, 181
Decimal	14863285
CIE Lab	83.03, 4.61, 13.90
CIE LCh	83, 14.643, 71.629
Yxy	62.2168, 0.3474, 0.3539
Android (android.graphics.Color)	4293053365 (0xFFE2CBB5)
YUV	207.3690, -12.9999, 16.3394
Hunter-Lab	78.8776, 0.1747, 15.7423

Details

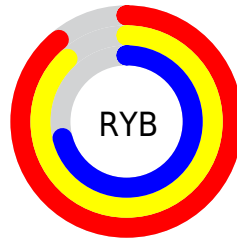
The Yxy color $62.2168, 0.3474, 0.3539$ is a light color, and the websafe version is hex `CCCCCC`. A complement of this color would be $58.5443, 0.2814, 0.3028$, and the grayscale version is $62.7283, 0.3127, 0.3290$.

A 20% lighter version of the original color is $98.8944, 0.3232, 0.3464$, and $31.5995, 0.3560, 0.3603$ is the 20% darker color. If you saturate the color by 10%, you get $56.1001, 0.3685, 0.3671$, and if you desaturate by 10%, it is $68.8980, 0.3288, 0.3411$.

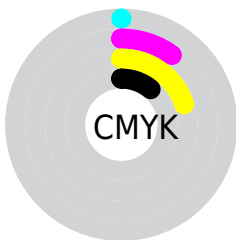
Distribution



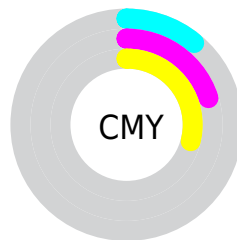
- Red (89%)
- Green (80%)
- Blue (71%)



- Red (89%)
- Yellow (88%)
- Blue (71%)



- Cyan (0%)
- Magenta (10%)
- Yellow (20%)
- Black (11%)





- Cyan (11%)
- Magenta (20%)
- Yellow (29%)

Brightness & Saturation Gradients

These gradients show how the Yxy color 62.2168, 0.3474, 0.3539 changes by changing the brightness by 10 percent. The first figure shows a shift by +10% for each color and the second figure -10%.


Similar to the brightness gradients but the following saturation gradients show a change of the Yxy color 62.2168, 0.3474, 0.3539 by changing the saturation by 10% instead.


 62.2168, 0.3474,
0.3539

 62.2168, 0.3474,
0.3539


432.7215, 0.3308,
0.3422

 45.2079, 0.3513,
0.3566


 108.0388, 0.3415,
0.3498

 31.6212, 0.3562,
0.3600


137.6207, 0.3393,
0.3482

 21.0723, 0.3625,
0.3642


172.1624, 0.3374,
0.3469

 13.1769, 0.3710,
0.3698

212.0483, 0.3357,
0.3457

 7.5505, 0.3828,
0.3774

257.6627, 0.3343,
0.3447

 3.8087, 0.4004,
0.3884

309.3901, 0.3330,

 1.5671, 0.4339,

0.3438

0.4095

367.6149, 0.3318,
0.3429

0.3353, 0.5626,
0.4374

0.0000, 0.0000,
0.0000

62.2168, 0.3474,
0.3539

62.2168, 0.3474,
0.3539

56.1001, 0.3685,
0.3671

68.8980, 0.3288,
0.3411

50.5236, 0.3922,
0.3803

76.1508, 0.3126,
0.3289

45.4728, 0.4182,
0.3927

83.9925, 0.2985,
0.3176

40.9298, 0.4458,
0.4032

91.3331, 0.2951,
0.3232

■ 36.8751, 0.4741,
0.4107

■ 94.9176, 0.2952,
0.3289

■ 33.2874, 0.5013,
0.4139

■ 30.1431, 0.5256,
0.4117

■ 27.4083, 0.5461,
0.4045

■ 27.3891, 0.5462,
0.4045

Harmonies

Analogous

The Analogous color harmony consists of three colors that are next to each other on the color wheel.



62.2168, 0.3490, 0.3403



62.2168, 0.3474, 0.3539



62.2168, 0.3363, 0.3613

Triad

The Triadic color harmony groups three colors that are evenly spaced from another and form a triangle on the color wheel.



62.2168, 0.3474, 0.3539



62.2168, 0.2856, 0.3329



62.2168, 0.3055, 0.3004

Complementary

The Complementary color scheme is a pair of colors which are on the opposite of each other on the color wheel.



62.2168, 0.3474, 0.3539



58.5443, 0.2814, 0.3028

Split Complementary

Split-complementary colors differ from the complementary color scheme. The scheme consists of three colors, the original color and two neighbors of the complement color.



62.2168, 0.2890, 0.2979



62.2168, 0.3474, 0.3539



62.2168, 0.2778, 0.3160

Square

The Square scheme is like the rectangle color scheme, but the four colors are evenly spaced on the color wheel.



62.2168, 0.3474, 0.3539



62.2168, 0.3005, 0.3492



62.2168, 0.2790, 0.3033



62.2168, 0.3244, 0.3100

Rectangle

The Rectangle color scheme consists of four colors that form a rectangle on the color wheel.



62.2168, 0.3474, 0.3539



62.2168, 0.3252, 0.3614



62.2168, 0.2790, 0.3033



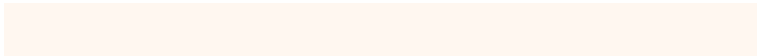
62.2168, 0.2995, 0.2987

Sweetspot

The Sweet Spot groups the original color and five complimentary colors.



62.2196, 0.3474, 0.3539



94.1552, 0.3223, 0.3363



53.6041, 0.3324, 0.3029



20.0205, 0.3233, 0.3371



0.0000, 0.0000, 0.0000



21.4041, 0.3127, 0.3290

Same Dimension

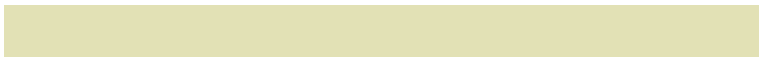
The Same Dimension uses a secret algorithm to generate beautiful new colors.



62.2196, 0.3474, 0.3539



78.2721, 0.3560, 0.3595



73.5295, 0.3428, 0.3777



14.7988, 0.3280, 0.3405



15.8533, 0.5437, 0.4065



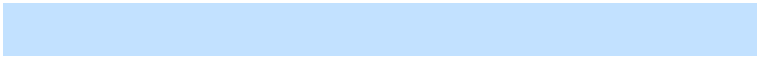
1.2777, 0.5195, 0.4257

Inverse Universe

The Inverse Universe completely reimagines the original color for something new.



58.5443, 0.2814, 0.3028



72.5917, 0.2745, 0.2964



48.6787, 0.2796, 0.2751



14.3983, 0.2981, 0.3173



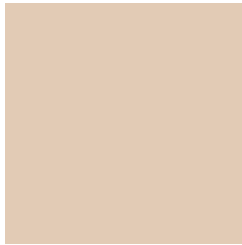
10.4646, 0.1785, 0.1624



0.9045, 0.1861, 0.1899

Previews

White Background



This preview shows how the Yxy color 62.2168, 0.3474, 0.3539 looks on a white background.

Color Contrast Check

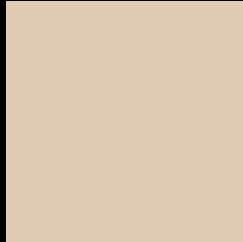
Large Text (above 18pt) WCAG AA × Fail

Any Text WCAG AA × Fail

Large Text (above 18pt) WCAG AAA × Fail

Any Text WCAG AAA × Fail

Black Background



This preview shows how the Yxy color 62.2168, 0.3474, 0.3539 looks on a black background.

Color Contrast Check

Large Text (above 18pt) WCAG AA ✓ Pass

Any Text WCAG AA ✓ Pass

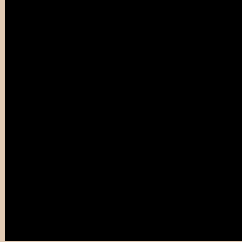
Large Text (above 18pt) WCAG AAA ✓ Pass

Any Text WCAG AAA ✓ Pass

If you want to check with other color combinations, try the [Color Contrast Checker](#).

Yxy 62.2168, 0.3474, 0.3539

Background



This preview shows how black text looks on a background with the Yxy color 62.2168, 0.3474, 0.3539.



This preview shows how white text looks on a background with the Yxy color 62.2168, 0.3474, 0.3539.

Color Blindness Simulation

Color vision deficiency is a very complex topic, and I could not describe the different causes any better than Wikipedia does, so if you want to learn more, you should check out their [article about color blindness](#).

Dichromacy



Original Color

62.2168, 0.3474, 0.3539

Protanopia

62.1604, 0.3372, 0.3556

Deuteranopia

62.0571, 0.3557, 0.3478



Tritanopia

62.0662, 0.3261, 0.3116

Trichromacy



Original Color

62.2168, 0.3474, 0.3539

Protanomaly

62.2557, 0.3413, 0.3554

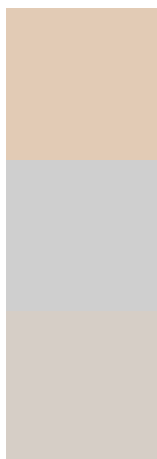
Deuteranomaly

61.8418, 0.3522, 0.3491

Tritanomaly

62.2308, 0.3342, 0.3269

Monochromacy



Original Color

62.2168, 0.3474, 0.3539

Achromatopsia

62.3960, 0.3127, 0.3290

Achromatomaly

62.5160, 0.3246, 0.3382

CSS Examples

Text

The CSS property to change the color of the text to Yxy 62.2168, 0.3474, 0.3539 is called "color". The color property can be set on classes, ids or directly on the HTML element.

This example shows how text in the color `rgb(226, 203, 181)` looks like.

```
.text, #text, p{  
    color:rgb(226, 203, 181)  
}
```

If you want to add a text shadow in that color use the text-shadow property, you can generate a text shadow directly with our [CSS Text Shadow Generator](#).

Here you see how black text with a 4 pixel rgb(226, 203, 181) colored shadow looks like.

```
.shadow{ text-shadow: 4px 4px 2px rgb(226, 203, 181) }
```

Border

The CSS property to change the border of an element to Yxy 62.2168, 0.3474, 0.3539 is called "border". The border property can be set on classes, ids or directly on the HTML element.

This example shows the color as border, it can be applied via the CSS property "border" or "border-color".

```
.border, #border, table{ border:4px solid rgb(226, 203, 181) }
```

If only the border color should be changed use the property `border-color`.

```
.border{ border-color:rgb(226, 203, 181) }
```

If you want to add a box shadow in that color use:

Here you see how a box with a 4 pixel `rgb(226, 203, 181)` colored shadow looks like.

```
.boxshadow{ -moz-box-shadow:4px 4px 4px  
4px rgb(226, 203, 181); -webkit-box-  
shadow:4px 4px 4px 4px rgb(226, 203, 181);  
box-shadow:4px 4px 4px 4px rgb(226, 203,  
181) }
```


Background

The CSS property to change the background color of an element to Yxy 62.2168, 0.3474, 0.3539 is called "background". The background property can be set on classes, ids or directly on the HTML element.

```
.background, #background, body{  
background: rgb(226, 203, 181) }
```

If only the background color should be changed can be used:

```
.background{ background-color: rgb(226,  
203, 181) }
```

This example shows the color as background, it is applied via the CSS property "background".

To optimize and compress your CSS code, you can use our [online CSS compressor and optimizer](#) based on csstidy. If you want to create a linear or radial gradient as background or border, check our [CSS Gradient Generator](#).

Hey! You found this booklet interesting? Support Converting Colors with the new Membership Option!

The pro membership hides all ads, plus gives you double the colors in the color bucket, and more awesome pro features!

[Learn more, Memberships starting at \\$2.50/m!](#)

**Follow me
on Twitter!**

@ConvertingColor