

Converting Colors

Yxy(62.5175, 0.3270, 0.3248)

Have a look what the booklet for
Yxy(62.5175, 0.3270, 0.3248)
contains.

Yxy(62.5446, 0.3270, 0.3246)	3
Conversions	4
Details	6
Harmonies	12
Previews	24
Color Blindness Simulation	27
CSS Examples	30

Color

Yxy(62.5446, 0.3270, 0.3246)

Conversions

Conversions Part 1

Format	Color
Hex	E0CACE
RGB	224, 202, 206
RGB Percent	88%, 79%, 81%
CMY	0.1214, 0.2079, 0.1922
CMYK	0.00, 0.10, 0.08, 0.12
HSL	349°, 26%, 84%
HSV	349°, 10%, 88%
XYZ	63.0070, 62.5446, 67.1304
YIQ	209.0340, 11.8280, 5.9080

Conversions

Conversions Part 2

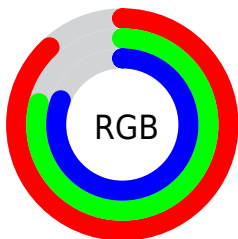
Format	Color
RYB	224, 202, 206
Decimal	14731982
CIELab	83.20, 8.37, 0.82
CIElCh	83, 8.411, 5.567
Yxy	62.5446, 0.3270, 0.3246
Android (android.graphics.Color)	4292922062 (0xFFE0CACE)
YUV	209.0340, -1.4958, 13.1252
Hunter-Lab	79.0851, 3.8117, 5.0320

Details

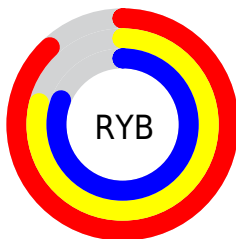
The Yxy color **62.5446, 0.3270, 0.3246** is a light color, and the websafe version is hex **CCCCCC**. A complement of this color would be **71.0555, 0.3001, 0.3335**, and the grayscale version is **63.7912, 0.3127, 0.3290**.

A 20% lighter version of the original color is **100.0000, 0.3127, 0.3290**, and **31.8818, 0.3307, 0.3232** is the 20% darker color. If you saturate the color by 10%, you get **51.9459, 0.3450, 0.3198**, and if you desaturate by 10%, it is **74.7791, 0.3125, 0.3291**.

Distribution



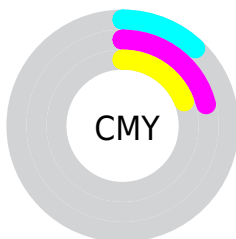
- Red (88%)
- Green (79%)
- Blue (81%)



- Red (88%)
- Yellow (79%)
- Blue (81%)



- Cyan (0%)
- Magenta (10%)
- Yellow (8%)
- Black (12%)



- Cyan (12%)
- Magenta (21%)
- Yellow (19%)

Brightness & Saturation Gradients

These gradients show how the Yxy color 62.5446, 0.3270, 0.3246 changes by changing the brightness by 10 percent. The first figure shows a shift by +10% for each color and the second figure -10%.

Similar to the brightness gradients but the following saturation gradients show a change of the Yxy color 62.5446, 0.3270, 0.3246 by changing the saturation by 10% instead.

■ 62.5446, 0.3270,
0.3246

■ 62.5446, 0.3270,
0.3246

433.9149, 0.3202,
0.3267

■ 45.4729, 0.3286,
0.3241

108.5122, 0.3246,
0.3254

■ 31.8301, 0.3306,
0.3235

138.1770, 0.3237,
0.3256

■ 21.2317, 0.3332,
0.3226

172.8082, 0.3229,
0.3259

■ 13.2935, 0.3367,
0.3215

212.7902, 0.3222,
0.3261

■ 7.6310, 0.3416,
0.3200

258.5075, 0.3216,
0.3263

■ 3.8597, 0.3490,
0.3176

310.3444, 0.3211,

■ 1.5954, 0.3615,

0.3264

0.3135

368.6854, 0.3206,
0.3266

0.3545, 0.4420,
0.2894

0.0000, 0.0000,
0.0000

62.5446, 0.3270,
0.3246

62.5446, 0.3270,
0.3246

51.9459, 0.3450,
0.3198

74.7791, 0.3125,
0.3291

42.9057, 0.3672,
0.3149

88.7061, 0.3008,
0.3332

35.3528, 0.3944,
0.3101

94.5927, 0.2941,
0.3289

29.2072, 0.4270,
0.3058

■ 24.3813, 0.4650,
0.3027

■ 20.7778, 0.5066,
0.3017

■ 18.2857, 0.5487,
0.3035

■ 16.7737, 0.5861,
0.3087

■ 16.0193, 0.6144,
0.3160

Harmonies

Analogous

The Analogous color harmony consists of three colors that are next to each other on the color wheel.



62.5446, 0.3173, 0.3165



62.5446, 0.3270, 0.3246



62.5446, 0.3328, 0.3339

Triad

The Triadic color harmony groups three colors that are evenly spaced from another and form a triangle on the color wheel.



62.5446, 0.3270, 0.3246



62.5446, 0.3187, 0.3470



62.5446, 0.2926, 0.3155

Complementary

The Complementary color scheme is a pair of colors which are on the opposite of each other on the color wheel.



62.5446, 0.3270, 0.3246



71.0555, 0.3001, 0.3335

Split Complementary

Split-complementary colors differ from the complementary color scheme. The scheme consists of three colors, the original color and two neighbors of the complement color.



62.5446, 0.2930, 0.3236



62.5446, 0.3270, 0.3246



62.5446, 0.3079, 0.3420

Square

The Square scheme is like the rectangle color scheme, but the four colors are evenly spaced on the color wheel.



62.5446, 0.3270, 0.3246



62.5446, 0.3279, 0.3470



62.5446, 0.2986, 0.3333



62.5446, 0.2976, 0.3113

Rectangle

The Rectangle color scheme consists of four colors that form a rectangle on the color wheel.



62.5446, 0.3270, 0.3246



62.5446, 0.3337, 0.3397



62.5446, 0.2986, 0.3333



62.5446, 0.2922, 0.3179

Sweetspot

The Sweet Spot groups the original color and five complimentary colors.



62.5473, 0.3270, 0.3246



94.8187, 0.3168, 0.3277



62.8377, 0.3108, 0.3047



20.0062, 0.3179, 0.3273



0.0000, 0.0000, 0.0000



21.4041, 0.3127, 0.3290

Same Dimension

The Same Dimension uses a secret algorithm to generate beautiful new colors.



62.5473, 0.3270, 0.3246



80.4959, 0.3307, 0.3236



65.7054, 0.3291, 0.3368



13.7408, 0.3264, 0.3248



9.3275, 0.6117, 0.3143



0.6586, 0.5706, 0.2917

Inverse Universe

The Inverse Universe completely reimagines the original color for something new.



62.5473, 0.3270, 0.3246



80.4959, 0.3307, 0.3236



67.5939, 0.2976, 0.3211



13.7408, 0.3264, 0.3248



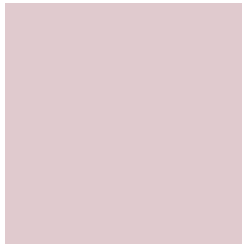
9.3275, 0.6117, 0.3143



0.6586, 0.5706, 0.2917

Previews

White Background



This preview shows how the Yxy color 62.5446, 0.3270, 0.3246 looks on a white background.

Color Contrast Check

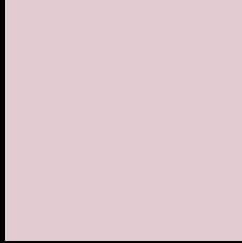
Large Text (above 18pt) WCAG AA × Fail

Any Text WCAG AA × Fail

Large Text (above 18pt) WCAG AAA × Fail

Any Text WCAG AAA × Fail

Black Background



This preview shows how the Yxy color 62.5446, 0.3270, 0.3246 looks on a black background.

Color Contrast Check

Large Text (above 18pt) WCAG AA ✓ Pass

Any Text WCAG AA ✓ Pass

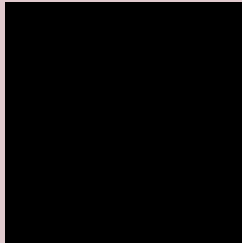
Large Text (above 18pt) WCAG AAA ✓ Pass

Any Text WCAG AAA ✓ Pass

If you want to check with other color combinations, try the [Color Contrast Checker](#).

Yxy 62.5446, 0.3270, 0.3246

Background



This preview shows how black text looks on a background with the Yxy color 62.5446, 0.3270, 0.3246.



This preview shows how white text looks on a background with the Yxy color 62.5446, 0.3270, 0.3246.

Color Blindness Simulation

Color vision deficiency is a very complex topic, and I could not describe the different causes any better than Wikipedia does, so if you want to learn more, you should check out their [article about color blindness](#).

Dichromacy



Original Color

62.5446, 0.3270, 0.3246

Protanopia

62.5456, 0.3151, 0.3267

Deuteranopia

62.7235, 0.3302, 0.3235



Tritanopia

62.2740, 0.3205, 0.3114

Trichromacy



Original Color

62.5446, 0.3270, 0.3246

Protanomaly

62.7666, 0.3197, 0.3268

Deuteranomaly

62.5604, 0.3294, 0.3235

Tritanomaly

62.5343, 0.3234, 0.3169

Monochromacy



Original Color

62.5446, 0.3270, 0.3246

Achromatopsia

63.7597, 0.3127, 0.3290

Achromatomaly

62.9928, 0.3174, 0.3267

CSS Examples

Text

The CSS property to change the color of the text to Yxy 62.5446, 0.3270, 0.3246 is called "color". The color property can be set on classes, ids or directly on the HTML element.

This example shows how text in the color `rgb(224, 202, 206)` looks like.

```
.text, #text, p{  
    color:rgb(224, 202, 206)  
}
```

If you want to add a text shadow in that color use the text-shadow property, you can generate a text shadow directly with our [CSS Text Shadow Generator](#).

Here you see how black text with a 4 pixel rgb(224, 202, 206) colored shadow looks like.

```
.shadow{ text-shadow: 4px 4px 2px rgb(224, 202, 206) }
```

Border

The CSS property to change the border of an element to Yxy 62.5446, 0.3270, 0.3246 is called "border". The border property can be set on classes, ids or directly on the HTML element.

This example shows the color as border, it can be applied via the CSS property "border" or "border-color".

```
.border, #border, table{ border:4px solid rgb(224, 202, 206) }
```

If only the border color should be changed use the property `border-color`.

```
.border{ border-color:rgb(224, 202, 206) }
```

If you want to add a box shadow in that color use:

Here you see how a box with a 4 pixel `rgb(224, 202, 206)` colored shadow looks like.

```
.boxshadow{ -moz-box-shadow:4px 4px 4px  
4px rgb(224, 202, 206); -webkit-box-  
shadow:4px 4px 4px 4px rgb(224, 202, 206);  
box-shadow:4px 4px 4px 4px rgb(224, 202,  
206) }
```


Background

The CSS property to change the background color of an element to Yxy 62.5446, 0.3270, 0.3246 is called "background". The background property can be set on classes, ids or directly on the HTML element.

```
.background, #background, body{  
background: rgb(224, 202, 206) }
```

If only the background color should be changed can be used:

```
.background{ background-color: rgb(224,  
202, 206) }
```

This example shows the color as background, it is applied via the CSS property "background".

To optimize and compress your CSS code, you can use our [online CSS compressor and optimizer](#) based on csstidy. If you want to create a linear or radial gradient as background or border, check our [CSS Gradient Generator](#).

Hey! You found this booklet interesting? Support Converting Colors with the new Membership Option!

The pro membership hides all ads, plus gives you double the colors in the color bucket, and more awesome pro features!

[Learn more, Memberships starting at \\$2.50/m!](#)

**Follow me
on Twitter!**

@ConvertingColor