

Converting Colors

$Yxy(62.5824, 0.3322, 0.3228)$

Have a look what the booklet for
Yxy(62.5824, 0.3322, 0.3228)
contains.

Yxy(62.5878, 0.3319, 0.3225)	3
Conversions	4
Details	6
Harmonies	12
Previews	24
Color Blindness Simulation	27
CSS Examples	30

Color

Yxy(62.5878, 0.3319, 0.3225)

Conversions

Conversions Part 1

Format	Color
Hex	E6C8CE
RGB	230, 200, 206
RGB Percent	90%, 78%, 81%
CMY	0.0983, 0.2156, 0.1922
CMYK	0.00, 0.13, 0.10, 0.10
HSL	348°, 37%, 84%
HSV	348°, 13%, 90%
XYZ	64.4121, 62.5878, 67.0708
YIQ	209.6540, 15.9540, 8.2260

Conversions

Conversions Part 2

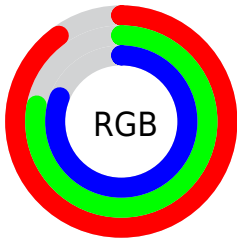
Format	Color
R _Y B	230, 200, 206
Decimal	15124686
CIE Lab	83.23, 11.49, 0.91
CIE LCh	83, 11.525, 4.507
Yxy	62.5878, 0.3319, 0.3225
Android (android.graphics.Color)	4293314766 (0xFFE6C8CE)
YUV	209.6540, -1.8014, 17.8434
Hunter-Lab	79.1125, 6.8850, 5.1132

Details

The Yxy color **62.5878, 0.3319, 0.3225** is a light color, and the websafe version is hex **FFCCCC**. A complement of this color would be **74.2236, 0.2964, 0.3356**, and the grayscale version is **64.2118, 0.3127, 0.3290**.

A 20% lighter version of the original color is **100.0000, 0.3127, 0.3290**, and **31.8234, 0.3363, 0.3204** is the 20% darker color. If you saturate the color by 10%, you get **51.8837, 0.3507, 0.3172**, and if you desaturate by 10%, it is **75.0040, 0.3167, 0.3276**.

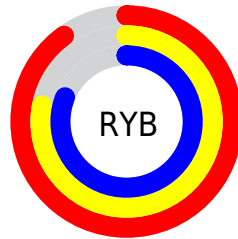
Distribution



Red (90%)

Green (78%)

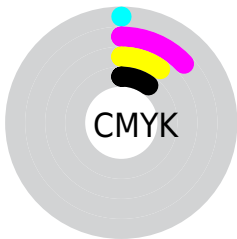
Blue (81%)



Red (90%)

Yellow (78%)

Blue (81%)

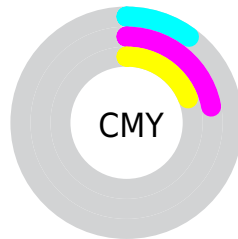


Cyan (0%)

Magenta (13%)

Yellow (10%)

Black (10%)



Cyan (10%)

Magenta (22%)

Yellow (19%)

Brightness & Saturation Gradients

These gradients show how the Yxy color 62.5878, 0.3319, 0.3225 changes by changing the brightness by 10 percent. The first figure shows a shift by +10% for each color and the second figure -10%.

Similar to the brightness gradients but the following saturation gradients show a change of the Yxy color 62.5878, 0.3319, 0.3225 by changing the saturation by 10% instead.

 62.5878, 0.3319,
0.3225

 62.5878, 0.3319,
0.3225

434.0720, 0.3228,
0.3256

 45.5078, 0.3341,
0.3218

108.5746, 0.3287,
0.3236

 31.8576, 0.3368,
0.3208


138.2502, 0.3274,
0.3240

 21.2528, 0.3402,
0.3196


172.8932, 0.3264,
0.3244

 13.3089, 0.3449,
0.3180

212.8879, 0.3255,
0.3247

 7.6416, 0.3515,
0.3157

258.6188, 0.3247,
0.3250

 3.8665, 0.3614,
0.3122

310.4701, 0.3240,

 1.5992, 0.3781,

0.3252

0.3062

368.8264, 0.3233,
0.3254

0.3570, 0.4760,
0.2742

0.0000, 0.0000,
0.0000

62.5878, 0.3319,
0.3225

62.5878, 0.3319,
0.3225

51.8837, 0.3507,
0.3172

75.0040, 0.3167,
0.3276

42.8085, 0.3739,
0.3117

89.1943, 0.3044,
0.3322

35.2846, 0.4022,
0.3065

95.5529, 0.2975,
0.3290

29.2246, 0.4358,
0.3020

■ 24.5326, 0.4743,
0.2991

■ 21.1010, 0.5157,
0.2987

■ 18.8060, 0.5564,
0.3017

■ 17.4984, 0.5914,
0.3082

■ 17.0088, 0.6106,
0.3137

Harmonies

Analogous

The Analogous color harmony consists of three colors that are next to each other on the color wheel.



62.5878, 0.3184, 0.3117



62.5878, 0.3319, 0.3225



62.5878, 0.3402, 0.3351

Triad

The Triadic color harmony groups three colors that are evenly spaced from another and form a triangle on the color wheel.



62.5878, 0.3319, 0.3225



62.5878, 0.3213, 0.3540



62.5878, 0.2852, 0.3108

Complementary

The Complementary color scheme is a pair of colors which are on the opposite of each other on the color wheel.



62.5878, 0.3319, 0.3225



74.2236, 0.2964, 0.3356

Split Complementary

Split-complementary colors differ from the complementary color scheme. The scheme consists of three colors, the original color and two neighbors of the complement color.



62.5878, 0.2860, 0.3219



62.5878, 0.3319, 0.3225



62.5878, 0.3066, 0.3473

Square

The Square scheme is like the rectangle color scheme, but the four colors are evenly spaced on the color wheel.



62.5878, 0.3319, 0.3225



62.5878, 0.3339, 0.3536



62.5878, 0.2937, 0.3353



62.5878, 0.2916, 0.3049

Rectangle

The Rectangle color scheme consists of four colors that form a rectangle on the color wheel.



62.5878, 0.3319, 0.3225



62.5878, 0.3416, 0.3430



62.5878, 0.2937, 0.3353



62.5878, 0.2847, 0.3140

Sweetspot

The Sweet Spot groups the original color and five complimentary colors.



62.5906, 0.3319, 0.3225



93.1489, 0.3181, 0.3271



62.8721, 0.3097, 0.2965



19.6706, 0.3192, 0.3267



0.0000, 0.0000, 0.0000



21.4041, 0.3127, 0.3290

Same Dimension

The Same Dimension uses a secret algorithm to generate beautiful new colors.



62.5906, 0.3319, 0.3225



74.7461, 0.3373, 0.3209



66.5862, 0.3351, 0.3389



14.4147, 0.3261, 0.3243



9.6490, 0.6071, 0.3118



0.7261, 0.5674, 0.2900

Inverse Universe

The Inverse Universe completely reimagines the original color for something new.



62.5906, 0.3319, 0.3225



74.7461, 0.3373, 0.3209



69.6880, 0.2926, 0.3189



14.4147, 0.3261, 0.3243



9.6490, 0.6071, 0.3118



0.7261, 0.5674, 0.2900

Previews

White Background



This preview shows how the Yxy color 62.5878, 0.3319, 0.3225 looks on a white background.

Color Contrast Check

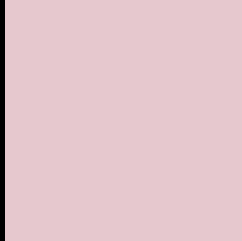
Large Text (above 18pt) WCAG AA × Fail

Any Text WCAG AA × Fail

Large Text (above 18pt) WCAG AAA × Fail

Any Text WCAG AAA × Fail

Black Background



This preview shows how the Yxy color 62.5878, 0.3319, 0.3225 looks on a black background.

Color Contrast Check

Large Text (above 18pt) WCAG AA ✓ Pass

Any Text WCAG AA ✓ Pass

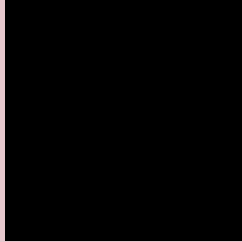
Large Text (above 18pt) WCAG AAA ✓ Pass

Any Text WCAG AAA ✓ Pass

If you want to check with other color combinations, try the [Color Contrast Checker](#).

Yxy 62.5878, 0.3319, 0.3225

Background



This preview shows how black text looks on a background with the Yxy color 62.5878, 0.3319, 0.3225.



This preview shows how white text looks on a background with the Yxy color 62.5878, 0.3319, 0.3225.

Color Blindness Simulation

Color vision deficiency is a very complex topic, and I could not describe the different causes any better than Wikipedia does, so if you want to learn more, you should check out their [article about color blindness](#).

Dichromacy



Original Color

62.5878, 0.3319, 0.3225

Protanopia

62.4974, 0.3129, 0.3244

Deuteranopia

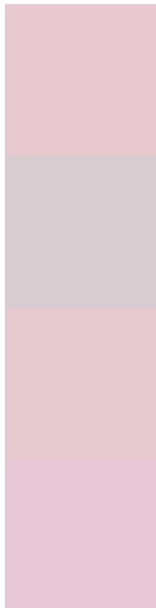
62.7235, 0.3302, 0.3235



Tritanopia

62.6908, 0.3268, 0.3127

Trichromacy



Original Color

62.5878, 0.3319, 0.3225

Protanomaly

62.5409, 0.3191, 0.3234

Deuteranomaly

62.8875, 0.3310, 0.3235

Tritanomaly

62.5389, 0.3291, 0.3159

Monochromacy



Original Color

62.5878, 0.3319, 0.3225

Achromatopsia

64.4480, 0.3127, 0.3290

Achromatomaly

63.4978, 0.3190, 0.3256

CSS Examples

Text

The CSS property to change the color of the text to Yxy 62.5878, 0.3319, 0.3225 is called "color". The color property can be set on classes, ids or directly on the HTML element.

This example shows how text in the color `rgb(230, 200, 206)` looks like.

```
.text, #text, p{  
    color:rgb(230, 200, 206)  
}
```

If you want to add a text shadow in that color use the text-shadow property, you can generate a text shadow directly with our [CSS Text Shadow Generator](#).

Here you see how black text with a 4 pixel rgb(230, 200, 206) colored shadow looks like.

```
.shadow{ text-shadow: 4px 4px 2px rgb(230, 200, 206) }
```

Border

The CSS property to change the border of an element to Yxy 62.5878, 0.3319, 0.3225 is called "border". The border property can be set on classes, ids or directly on the HTML element.

This example shows the color as border, it can be applied via the CSS property "border" or "border-color".

```
.border, #border, table{ border:4px solid rgb(230, 200, 206) }
```

If only the border color should be changed use the property `border-color`.

```
.border{ border-color:rgb(230, 200, 206) }
```

If you want to add a box shadow in that color use:

Here you see how a box with a 4 pixel `rgb(230, 200, 206)` colored shadow looks like.

```
.boxshadow{ -moz-box-shadow:4px 4px 4px  
4px rgb(230, 200, 206); -webkit-box-  
shadow:4px 4px 4px 4px rgb(230, 200, 206);  
box-shadow:4px 4px 4px 4px rgb(230, 200,  
206) }
```


Background

The CSS property to change the background color of an element to Yxy 62.5878, 0.3319, 0.3225 is called "background". The background property can be set on classes, ids or directly on the HTML element.

```
.background, #background, body{  
background: rgb(230, 200, 206) }
```

If only the background color should be changed can be used:

```
.background{ background-color: rgb(230,  
200, 206) }
```

This example shows the color as background, it is applied via the CSS property "background".

To optimize and compress your CSS code, you can use our [online CSS compressor and optimizer](#) based on csstidy. If you want to create a linear or radial gradient as background or border, check our [CSS Gradient Generator](#).

Hey! You found this booklet interesting? Support Converting Colors with the new Membership Option!

The pro membership hides all ads, plus gives you double the colors in the color bucket, and more awesome pro features!

[Learn more, Memberships starting at \\$2.50/m!](#)

**Follow me
on Twitter!**

@ConvertingColor