

Converting Colors

$Yxy(62.6066, 0.3333, 0.3408)$

Have a look what the booklet for
Yxy(62.6066, 0.3333, 0.3408)
contains.

Yxy(62.4529, 0.3333, 0.3404)	3
Conversions	4
Details	6
Harmonies	12
Previews	24
Color Blindness Simulation	27
CSS Examples	30

Color

Yxy(62.4529, 0.3333, 0.3404)

Conversions

Conversions Part 1

Format	Color
Hex	DDCCC2
RGB	221, 204, 194
RGB Percent	87%, 80%, 76%
CMY	0.1333, 0.2000, 0.2392
CMYK	0.00, 0.08, 0.12, 0.13
HSL	22°, 28%, 81%
HSV	22°, 12%, 87%
XYZ	61.1503, 62.4529, 59.8660
YIQ	207.9430, 13.3420, 0.4940

Conversions

Conversions Part 2

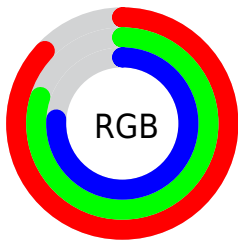
Format	Color
R _{YB}	221, 210, 194
Decimal	14535874
CIE Lab	83.15, 4.26, 7.11
CIE LCh	83, 8.285, 59.095
Yxy	62.4529, 0.3333, 0.3404
Android (android.graphics.Color)	4292725954 (0xFFDDCCC2)
YUV	207.9430, -6.8739, 11.4510
Hunter-Lab	79.0271, -0.1763, 10.4046

Details

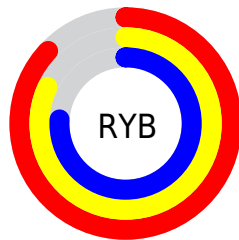
The Yxy color **62.4529, 0.3333, 0.3404** is a light color, and the websafe version is hex **CCCCCC**. A complement of this color would be **63.2773, 0.2938, 0.3173**, and the grayscale version is **63.0784, 0.3127, 0.3290**.

A 20% lighter version of the original color is **99.6821, 0.3156, 0.3338**, and **31.8131, 0.3392, 0.3440** is the 20% darker color. If you saturate the color by 10%, you get **55.2146, 0.3534, 0.3503**, and if you desaturate by 10%, it is **70.4351, 0.3162, 0.3310**.

Distribution



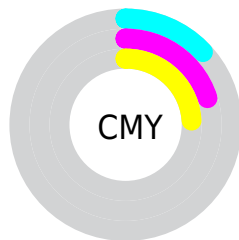
- Red (87%)
- Green (80%)
- Blue (76%)



- Red (87%)
- Yellow (82%)
- Blue (76%)



- Cyan (0%)
- Magenta (8%)
- Yellow (12%)
- Black (13%)



- Cyan (13%)
- Magenta (20%)
- Yellow (24%)

Brightness & Saturation Gradients

These gradients show how the Yxy color 62.4529, 0.3333, 0.3404 changes by changing the brightness by 10 percent. The first figure shows a shift by +10% for each color and the second figure -10%.

Similar to the brightness gradients but the following saturation gradients show a change of the Yxy color 62.4529, 0.3333, 0.3404 by changing the saturation by 10% instead.

■ 62.4529, 0.3333,
0.3404

■ 62.4529, 0.3333,
0.3404

433.5812, 0.3235,
0.3351

■ 45.3988, 0.3356,
0.3416

■ 108.3798, 0.3298,
0.3385

■ 31.7716, 0.3385,
0.3432

138.0214, 0.3285,
0.3378

■ 21.1871, 0.3423,
0.3452

172.6276, 0.3274,
0.3372

■ 13.2609, 0.3474,
0.3478

212.5827, 0.3264,
0.3366

■ 7.6084, 0.3545,
0.3514

258.2713, 0.3255,
0.3362

■ 3.8454, 0.3653,
0.3566

310.0776, 0.3247,

■ 1.5875, 0.3834,

0.3358

0.3650

368.3861, 0.3241,
0.3354

0.3491, 0.5552,
0.4448

0.0000, 0.0000,
0.0000

62.4529, 0.3333,
0.3404

62.4529, 0.3333,
0.3404

55.2146, 0.3534,
0.3503

70.4351, 0.3162,
0.3310

48.6901, 0.3767,
0.3606

79.1740, 0.3016,
0.3223

42.8591, 0.4035,
0.3706

88.3463, 0.2920,
0.3195

37.6974, 0.4336,
0.3797

94.1135, 0.2923,
0.3289

■ 33.1790, 0.4664,
0.3869

■ 29.2761, 0.5002,
0.3910

■ 25.9584, 0.5328,
0.3906

■ 23.1923, 0.5613,
0.3850

■ 21.3916, 0.5798,
0.3778

Harmonies

Analogous

The Analogous color harmony consists of three colors that are next to each other on the color wheel.



62.4529, 0.3317, 0.3319



62.4529, 0.3333, 0.3404



62.4529, 0.3292, 0.3461

Triad

The Triadic color harmony groups three colors that are evenly spaced from another and form a triangle on the color wheel.



62.4529, 0.3333, 0.3404



62.4529, 0.3005, 0.3353



62.4529, 0.3045, 0.3115

Complementary

The Complementary color scheme is a pair of colors which are on the opposite of each other on the color wheel.



62.4529, 0.3333, 0.3404



63.2773, 0.2938, 0.3173

Split Complementary

Split-complementary colors differ from the complementary color scheme. The scheme consists of three colors, the original color and two neighbors of the complement color.



62.4529, 0.2963, 0.3121



62.4529, 0.3333, 0.3404



62.4529, 0.2941, 0.3257

Square

The Square scheme is like the rectangle color scheme, but the four colors are evenly spaced on the color wheel.



62.4529, 0.3333, 0.3404



62.4529, 0.3102, 0.3432



62.4529, 0.2926, 0.3172



62.4529, 0.3150, 0.3154

Rectangle

The Rectangle color scheme consists of four colors that form a rectangle on the color wheel.



62.4529, 0.3333, 0.3404



62.4529, 0.3240, 0.3474



62.4529, 0.2926, 0.3172



62.4529, 0.3014, 0.3111

Sweetspot

The Sweet Spot groups the original color and five complimentary colors.



62.4557, 0.3333, 0.3404



95.3320, 0.3191, 0.3327



58.6626, 0.3215, 0.3098



20.2211, 0.3203, 0.3334



0.0000, 0.0000, 0.0000



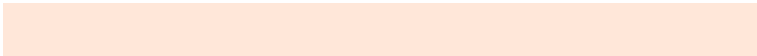
21.4041, 0.3127, 0.3290

Same Dimension

The Same Dimension uses a secret algorithm to generate beautiful new colors.



62.4557, 0.3333, 0.3404



83.3654, 0.3388, 0.3432



69.1038, 0.3314, 0.3552



13.8378, 0.3282, 0.3377



12.6250, 0.5770, 0.3800



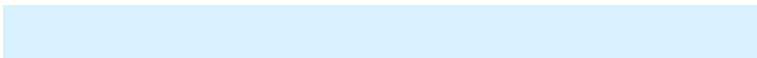
0.9797, 0.5462, 0.4045

Inverse Universe

The Inverse Universe completely reimagines the original color for something new.



63.2773, 0.2938, 0.3173



84.7417, 0.2893, 0.3143



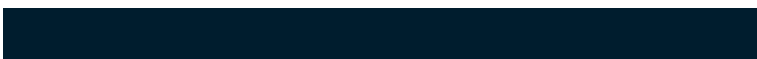
56.8930, 0.2935, 0.3014



13.9763, 0.2982, 0.3201



14.0019, 0.1899, 0.2035



1.0699, 0.1962, 0.2262

Previews

White Background



This preview shows how the Yxy color 62.4529, 0.3333, 0.3404 looks on a white background.

Color Contrast Check

Large Text (above 18pt) WCAG AA × Fail

Any Text WCAG AA × Fail

Large Text (above 18pt) WCAG AAA × Fail

Any Text WCAG AAA × Fail

Black Background



This preview shows how the Yxy color 62.4529, 0.3333, 0.3404 looks on a black background.

Color Contrast Check

Large Text (above 18pt) WCAG AA ✓ Pass

Any Text WCAG AA ✓ Pass

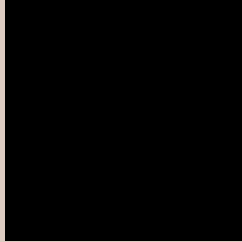
Large Text (above 18pt) WCAG AAA ✓ Pass

Any Text WCAG AAA ✓ Pass

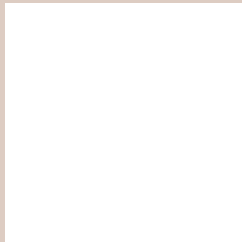
If you want to check with other color combinations, try the [Color Contrast Checker](#).

Yxy 62.4529, 0.3333, 0.3404

Background



This preview shows how black text looks on a background with the Yxy color 62.4529, 0.3333, 0.3404.



This preview shows how white text looks on a background with the Yxy color 62.4529, 0.3333, 0.3404.

Color Blindness Simulation

Color vision deficiency is a very complex topic, and I could not describe the different causes any better than Wikipedia does, so if you want to learn more, you should check out their [article about color blindness](#).

Dichromacy



Original Color

62.4529, 0.3333, 0.3404

Protanopia

62.3789, 0.3268, 0.3417

Deuteranopia

62.4045, 0.3420, 0.3346



Tritanopia

62.5784, 0.3197, 0.3125

Trichromacy



Original Color

62.4529, 0.3333, 0.3404

Protanomaly

62.3545, 0.3292, 0.3405

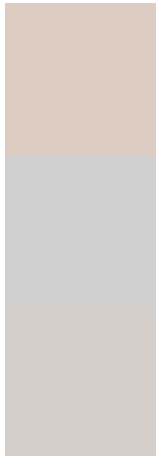
Deuteranomaly

62.2074, 0.3386, 0.3358

Tritanomaly

62.4831, 0.3247, 0.3223

Monochromacy



Original Color

62.4529, 0.3333, 0.3404

Achromatopsia

63.0757, 0.3127, 0.3290

Achromatomaly

63.0836, 0.3201, 0.3336

CSS Examples

Text

The CSS property to change the color of the text to Yxy 62.4529, 0.3333, 0.3404 is called "color". The color property can be set on classes, ids or directly on the HTML element.

This example shows how text in the color `rgb(221, 204, 194)` looks like.

```
.text, #text, p{  
    color:rgb(221, 204, 194)  
}
```

If you want to add a text shadow in that color use the text-shadow property, you can generate a text shadow directly with our [CSS Text Shadow Generator](#).

Here you see how black text with a 4 pixel rgb(221, 204, 194) colored shadow looks like.

```
.shadow{ text-shadow: 4px 4px 2px rgb(221, 204, 194) }
```

Border

The CSS property to change the border of an element to Yxy 62.4529, 0.3333, 0.3404 is called "border". The border property can be set on classes, ids or directly on the HTML element.

This example shows the color as border, it can be applied via the CSS property "border" or "border-color".

```
.border, #border, table{ border:4px solid rgb(221, 204, 194) }
```

If only the border color should be changed use the property `border-color`.

```
.border{ border-color:rgb(221, 204, 194) }
```

If you want to add a box shadow in that color use:

Here you see how a box with a 4 pixel `rgb(221, 204, 194)` colored shadow looks like.

```
.boxshadow{ -moz-box-shadow:4px 4px 4px  
4px rgb(221, 204, 194); -webkit-box-  
shadow:4px 4px 4px 4px rgb(221, 204, 194);  
box-shadow:4px 4px 4px 4px rgb(221, 204,  
194) }
```


Background

The CSS property to change the background color of an element to Yxy 62.4529, 0.3333, 0.3404 is called "background". The background property can be set on classes, ids or directly on the HTML element.

```
.background, #background, body{  
background: rgb(221, 204, 194) }
```

If only the background color should be changed can be used:

```
.background{ background-color: rgb(221,  
204, 194) }
```

This example shows the color as background, it is applied via the CSS property "background".

To optimize and compress your CSS code, you can use our [online CSS compressor and optimizer](#) based on csstidy. If you want to create a linear or radial gradient as background or border, check our [CSS Gradient Generator](#).

Hey! You found this booklet interesting? Support Converting Colors with the new Membership Option!

The pro membership hides all ads, plus gives you double the colors in the color bucket, and more awesome pro features!

[Learn more, Memberships starting at \\$2.50/m!](#)

**Follow me
on Twitter!**

@ConvertingColor