

Converting Colors

Yxy(62.6638, 0.3379, 0.3419)

Have a look what the booklet for
Yxy(62.6638, 0.3379, 0.3419)
contains.

Yxy(62.5252, 0.3381, 0.3414)	3
Conversions	4
Details	6
Harmonies	12
Previews	24
Color Blindness Simulation	27
CSS Examples	30

Color

Yxy(62.5252, 0.3381, 0.3414)

Conversions

Conversions Part 1

Format	Color
Hex	E1CBC0
RGB	225, 203, 192
RGB Percent	88%, 80%, 75%
CMY	0.1177, 0.2039, 0.2469
CMYK	0.00, 0.10, 0.15, 0.12
HSL	20°, 35%, 82%
HSV	20°, 15%, 88%
XYZ	61.9208, 62.5252, 58.6975
YIQ	208.3240, 16.6430, 1.2430

Conversions

Conversions Part 2

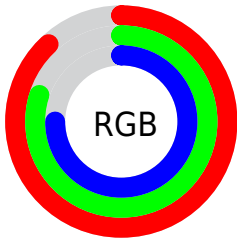
Format	Color
R _Y B	225, 209, 192
Decimal	14797760
CIE Lab	83.19, 5.90, 8.25
CIE LCh	83, 10.138, 54.440
Yxy	62.5252, 0.3381, 0.3414
Android (android.graphics.Color)	4292987840 (0xFFE1CBC0)
YUV	208.3240, -8.0477, 14.6249
Hunter-Lab	79.0729, 1.4032, 11.3388

Details

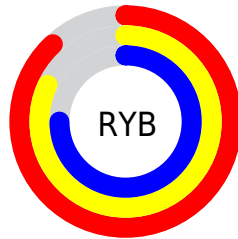
The Yxy color **62.5252, 0.3381, 0.3414** is a light color, and the websafe version is hex **CCCCCC**. A complement of this color would be **64.7479, 0.2901, 0.3163**, and the grayscale version is **63.3446, 0.3127, 0.3290**.

A 20% lighter version of the original color is **99.5573, 0.3168, 0.3357**, and **31.9050, 0.3447, 0.3438** is the 20% darker color. If you saturate the color by 10%, you get **54.8562, 0.3593, 0.3505**, and if you desaturate by 10%, it is **71.0385, 0.3201, 0.3328**.

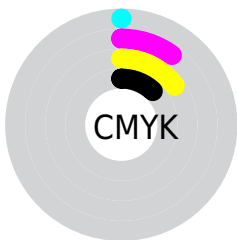
Distribution



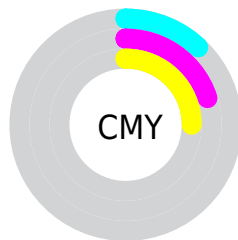
- Red (88%)
- Green (80%)
- Blue (75%)



- Red (88%)
- Yellow (82%)
- Blue (75%)



- Cyan (0%)
- Magenta (10%)
- Yellow (15%)
- Black (12%)





- Cyan (12%)
- Magenta (20%)
- Yellow (25%)

Brightness & Saturation Gradients


These gradients show how the Yxy color 62.5252, 0.3381, 0.3414 changes by changing the brightness by 10 percent. The first figure shows a shift by +10% for each color and the second figure -10%.

Similar to the brightness gradients but the following saturation gradients show a change of the Yxy color 62.5252, 0.3381, 0.3414 by changing the saturation by 10% instead.


 62.5252, 0.3381,
0.3414

 62.5252, 0.3381,
0.3414


433.8443, 0.3260,
0.3356

 45.4572, 0.3410,
0.3427


 108.4842, 0.3338,
0.3394

 31.8177, 0.3446,
0.3444


138.1441, 0.3322,
0.3386

 21.2223, 0.3492,
0.3465


172.7700, 0.3308,
0.3379

 13.2866, 0.3555,
0.3492

212.7463, 0.3295,
0.3374

 7.6262, 0.3643,
0.3530

258.4575, 0.3285,
0.3368

 3.8567, 0.3776,
0.3584

310.2880, 0.3275,

 1.5937, 0.3999,

0.3364

0.3667

368.6221, 0.3267,
0.3360

0.3534, 0.5759,
0.4241

0.0000, 0.0000,
0.0000

62.5252, 0.3381,
0.3414

62.5252, 0.3381,
0.3414

54.8562, 0.3593,
0.3505

71.0385, 0.3201,
0.3328

47.9968, 0.3841,
0.3597

80.4127, 0.3049,
0.3248

41.9221, 0.4127,
0.3686

90.3791, 0.2945,
0.3219

36.6028, 0.4450,
0.3764

94.7446, 0.2946,
0.3289

■ 32.0073, 0.4798,
0.3821

■ 28.1020, 0.5155,
0.3844

■ 24.8498, 0.5491,
0.3822

■ 22.2094, 0.5773,
0.3749

■ 21.0235, 0.5901,
0.3697

Harmonies

Analogous

The Analogous color harmony consists of three colors that are next to each other on the color wheel.



62.5252, 0.3351, 0.3307



62.5252, 0.3381, 0.3414



62.5252, 0.3341, 0.3491

Triad

The Triadic color harmony groups three colors that are evenly spaced from another and form a triangle on the color wheel.



62.5252, 0.3381, 0.3414



62.5252, 0.2994, 0.3384



62.5252, 0.3008, 0.3074

Complementary

The Complementary color scheme is a pair of colors which are on the opposite of each other on the color wheel.



62.5252, 0.3381, 0.3414



64.7479, 0.2901, 0.3163

Split Complementary

Split-complementary colors differ from the complementary color scheme. The scheme consists of three colors, the original color and two neighbors of the complement color.



62.5252, 0.2916, 0.3089



62.5252, 0.3381, 0.3414



62.5252, 0.2908, 0.3267

Square

The Square scheme is like the rectangle color scheme, but the four colors are evenly spaced on the color wheel.



62.5252, 0.3381, 0.3414



62.5252, 0.3117, 0.3476



62.5252, 0.2880, 0.3159



62.5252, 0.3134, 0.3113

Rectangle

The Rectangle color scheme consists of four colors that form a rectangle on the color wheel.



62.5252, 0.3381, 0.3414



62.5252, 0.3281, 0.3514



62.5252, 0.2880, 0.3159



62.5252, 0.2972, 0.3072

Sweetspot

The Sweet Spot groups the original color and five complimentary colors.



62.5280, 0.3381, 0.3414



95.0957, 0.3191, 0.3323



58.6054, 0.3223, 0.3041



20.1614, 0.3203, 0.3329



0.0000, 0.0000, 0.0000



21.4041, 0.3127, 0.3290

Same Dimension

The Same Dimension uses a secret algorithm to generate beautiful new colors.



62.5280, 0.3381, 0.3414



79.3849, 0.3451, 0.3445



70.4453, 0.3355, 0.3588



14.4423, 0.3284, 0.3369



12.3090, 0.5872, 0.3719



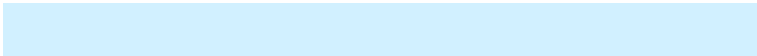
1.0138, 0.5572, 0.3958

Inverse Universe

The Inverse Universe completely reimagines the original color for something new.



64.7479, 0.2901, 0.3163



82.9446, 0.2847, 0.3130



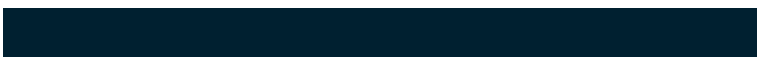
57.0722, 0.2894, 0.2974



14.7632, 0.2982, 0.3210



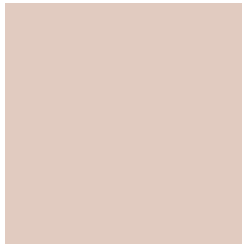
15.9420, 0.1935, 0.2167



1.2675, 0.1989, 0.2361

Previews

White Background



This preview shows how the Yxy color 62.5252, 0.3381, 0.3414 looks on a white background.

Color Contrast Check

Large Text (above 18pt) WCAG AA × Fail

Any Text WCAG AA × Fail

Large Text (above 18pt) WCAG AAA × Fail

Any Text WCAG AAA × Fail

Black Background



This preview shows how the Yxy color 62.5252, 0.3381, 0.3414 looks on a black background.

Color Contrast Check

Large Text (above 18pt) WCAG AA ✓ Pass

Any Text WCAG AA ✓ Pass

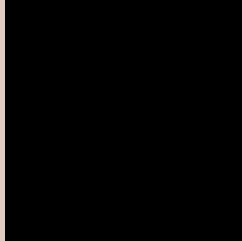
Large Text (above 18pt) WCAG AAA ✓ Pass

Any Text WCAG AAA ✓ Pass

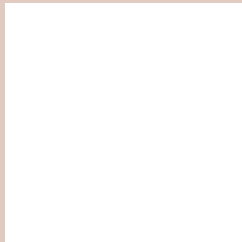
If you want to check with other color combinations, try the [Color Contrast Checker](#).

Yxy 62.5252, 0.3381, 0.3414

Background



This preview shows how black text looks on a background with the Yxy color 62.5252, 0.3381, 0.3414.



This preview shows how white text looks on a background with the Yxy color 62.5252, 0.3381, 0.3414.

Color Blindness Simulation

Color vision deficiency is a very complex topic, and I could not describe the different causes any better than Wikipedia does, so if you want to learn more, you should check out their [article about color blindness](#).

Dichromacy



Original Color

62.5252, 0.3381, 0.3414

Protanopia

62.8168, 0.3274, 0.3440

Deuteranopia

62.4824, 0.3444, 0.3368



Tritanopia

62.7088, 0.3236, 0.3126

Trichromacy



Original Color

62.5252, 0.3381, 0.3414

Protanomaly

62.8983, 0.3314, 0.3439

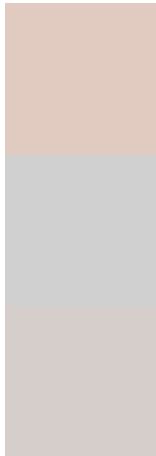
Deuteranomaly

62.4465, 0.3418, 0.3380

Tritanomaly

62.6092, 0.3287, 0.3224

Monochromacy



Original Color

62.5252, 0.3381, 0.3414

Achromatopsia

63.0757, 0.3127, 0.3290

Achromatomaly

62.7030, 0.3217, 0.3336

CSS Examples

Text

The CSS property to change the color of the text to Yxy 62.5252, 0.3381, 0.3414 is called "color". The color property can be set on classes, ids or directly on the HTML element.

This example shows how text in the color `rgb(225, 203, 192)` looks like.

```
.text, #text, p{  
    color:rgb(225, 203, 192)  
}
```

If you want to add a text shadow in that color use the text-shadow property, you can generate a text shadow directly with our [CSS Text Shadow Generator](#).

Here you see how black text with a 4 pixel rgb(225, 203, 192) colored shadow looks like.

```
.shadow{ text-shadow: 4px 4px 2px rgb(225, 203, 192) }
```

Border

The CSS property to change the border of an element to Yxy 62.5252, 0.3381, 0.3414 is called "border". The border property can be set on classes, ids or directly on the HTML element.

This example shows the color as border, it can be applied via the CSS property "border" or "border-color".

```
.border, #border, table{ border:4px solid rgb(225, 203, 192) }
```

If only the border color should be changed use the property border-color.

```
.border{ border-color:rgb(225, 203, 192) }
```

If you want to add a box shadow in that color use:

Here you see how a box with a 4 pixel rgb(225, 203, 192) colored shadow looks like.

```
.boxshadow{ -moz-box-shadow:4px 4px 4px  
4px rgb(225, 203, 192); -webkit-box-  
shadow:4px 4px 4px 4px rgb(225, 203, 192);  
box-shadow:4px 4px 4px 4px rgb(225, 203,  
192) }
```


Background

The CSS property to change the background color of an element to Yxy 62.5252, 0.3381, 0.3414 is called "background". The background property can be set on classes, ids or directly on the HTML element.

```
.background, #background, body{  
background: rgb(225, 203, 192) }
```

If only the background color should be changed can be used:

```
.background{ background-color: rgb(225,  
203, 192) }
```

This example shows the color as background, it is applied via the CSS property "background".

To optimize and compress your CSS code, you can use our [online CSS compressor and optimizer](#) based on csstidy. If you want to create a linear or radial gradient as background or border, check our [CSS Gradient Generator](#).

Hey! You found this booklet interesting? Support Converting Colors with the new Membership Option!

The pro membership hides all ads, plus gives you double the colors in the color bucket, and more awesome pro features!

[Learn more, Memberships starting at \\$2.50/m!](#)

**Follow me
on Twitter!**

@ConvertingColor