

# Converting Colors

$Yxy(62.6982, 0.3342, 0.3386)$

Have a look what the booklet for  
Yxy(62.6982, 0.3342, 0.3386)  
contains.

<b>Yxy(62.8138, 0.3341, 0.3392)</b> .....	3
<b><i>Conversions</i></b> .....	4
<b><i>Details</i></b> .....	6
<b><i>Harmonies</i></b> .....	12
<b><i>Previews</i></b> .....	24
<b><i>Color Blindness Simulation</i></b> .....	27
<b><i>CSS Examples</i></b> .....	30

# Color

**Yxy(62.8138, 0.3341, 0.3392)**

# Conversions

## Conversions Part 1

Format	Color
Hex	DFCCCC
RGB	223, 204, 195
RGB Percent	87%, 80%, 76%
CMY	0.1256, 0.1999, 0.2352
CMYK	0.00, 0.09, 0.13, 0.13
HSL	19°, 30%, 82%
HSV	19°, 13%, 87%
XYZ	61.8694, 62.8138, 60.4990
YIQ	208.6550, 14.2130, 1.2290

# Conversions

## Conversions Part 2

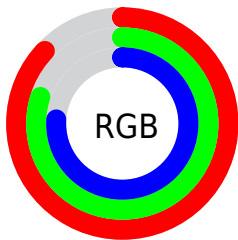
Format	Color
RYP	223, 208, 195
Decimal	14666947
CIE Lab	83.34, 5.12, 6.86
CIE LCh	83, 8.560, 53.277
Yxy	62.8138, 0.3341, 0.3392
Android (android.graphics.Color)	4292857027 (0xFFDFCCC3)
YUV	208.6550, -6.7319, 12.5806
Hunter-Lab	79.2552, 0.6469, 10.2199

# Details

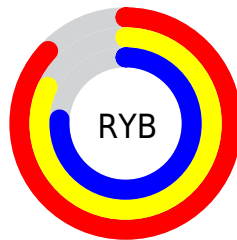
The Yxy color **62.8138, 0.3341, 0.3392** is a light color, and the websafe version is hex **CCCCCC**. A complement of this color would be **65.0090, 0.2934, 0.3186**, and the grayscale version is **63.5618, 0.3127, 0.3290**.

A 20% lighter version of the original color is **99.8083, 0.3144, 0.3319**, and **32.0606, 0.3403, 0.3424** is the 20% darker color. If you saturate the color by 10%, you get **55.0396, 0.3547, 0.3479**, and if you desaturate by 10%, it is **71.4420, 0.3167, 0.3310**.

# Distribution



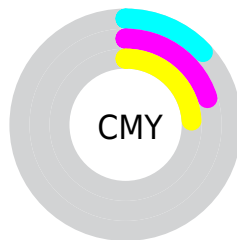
- Red (87%)
- Green (80%)
- Blue (76%)



- Red (87%)
- Yellow (82%)
- Blue (76%)



- Cyan (0%)
- Magenta (9%)
- Yellow (13%)
- Black (13%)



- Cyan (13%)
- Magenta (20%)
- Yellow (24%)

# Brightness & Saturation Gradients

These gradients show how the Yxy color 62.8138, 0.3341, 0.3392 changes by changing the brightness by 10 percent. The first figure shows a shift by +10% for each color and the second figure -10%.

Similar to the brightness gradients but the following saturation gradients show a change of the Yxy color 62.8138, 0.3341, 0.3392 by changing the saturation by 10% instead.



62.8138, 0.3341,  
0.3392

62.8138, 0.3341,  
0.3392

434.8934, 0.3239,  
0.3344

45.6906, 0.3365,  
0.3403

108.9008, 0.3305,  
0.3375

32.0017, 0.3395,  
0.3417

138.6335, 0.3291,  
0.3369

21.3628, 0.3434,  
0.3434

173.3380, 0.3279,  
0.3363

13.3895, 0.3487,  
0.3457

213.3989, 0.3269,  
0.3359

7.6973, 0.3561,  
0.3488

259.2004, 0.3260,  
0.3354

3.9019, 0.3672,  
0.3534

311.1271, 0.3252,

1.6188, 0.3860,

0.3351

369.5633, 0.3245,  
0.3347

0.3605

0.3702, 0.5629,  
0.4371

0.0000, 0.0000,  
0.0000

62.8138, 0.3341,  
0.3392

62.8138, 0.3341,  
0.3392

55.0396, 0.3547,  
0.3479

71.4420, 0.3167,  
0.3310

48.0845, 0.3789,  
0.3568

80.9409, 0.3020,  
0.3234

41.9235, 0.4069,  
0.3656

90.8849, 0.2933,  
0.3233

36.5271, 0.4387,  
0.3734

94.4239, 0.2934,  
0.3289

■ 31.8639, 0.4736,  
0.3794

■ 27.9000, 0.5099,  
0.3823

■ 24.5987, 0.5446,  
0.3809

■ 21.9188, 0.5746,  
0.3746

■ 20.2904, 0.5928,  
0.3675

# Harmonies

## Analogous

The Analogous color harmony consists of three colors that are next to each other on the color wheel.



62.8138, 0.3314, 0.3301



62.8138, 0.3341, 0.3392



62.8138, 0.3310, 0.3458

# Triad

The Triadic color harmony groups three colors that are evenly spaced from another and form a triangle on the color wheel.



62.8138, 0.3341, 0.3392



62.8138, 0.3019, 0.3373



62.8138, 0.3023, 0.3107

# Complementary

The Complementary color scheme is a pair of colors which are on the opposite of each other on the color wheel.



62.8138, 0.3341, 0.3392



65.0090, 0.2934, 0.3186

# Split Complementary

Split-complementary colors differ from the complementary color scheme. The scheme consists of three colors, the original color and two neighbors of the complement color.



62.8138, 0.2947, 0.3122



62.8138, 0.3341, 0.3392



62.8138, 0.2944, 0.3275

# Square

The Square scheme is like the rectangle color scheme, but the four colors are evenly spaced on the color wheel.



62.8138, 0.3341, 0.3392



62.8138, 0.3123, 0.3449



62.8138, 0.2918, 0.3183



62.8138, 0.3129, 0.3138



# Rectangle

The Rectangle color scheme consists of four colors that form a rectangle on the color wheel.



62.8138, 0.3341, 0.3392



62.8138, 0.3261, 0.3478



62.8138, 0.2918, 0.3183



62.8138, 0.2993, 0.3106

# Sweetspot

The Sweet Spot groups the original color and five complimentary colors.



62.8166, 0.3341, 0.3392



95.0266, 0.3191, 0.3322



59.5803, 0.3207, 0.3077



20.1440, 0.3203, 0.3328



0.0000, 0.0000, 0.0000



21.4041, 0.3127, 0.3290

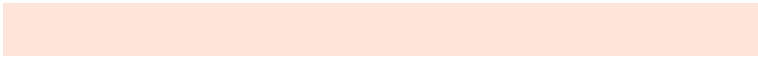


# Same Dimension

The Same Dimension uses a secret algorithm to generate beautiful new colors.



62.8166, 0.3341, 0.3392



82.3306, 0.3391, 0.3414



69.6883, 0.3321, 0.3544



14.4173, 0.3284, 0.3366



12.1154, 0.5901, 0.3697



0.9981, 0.5599, 0.3936

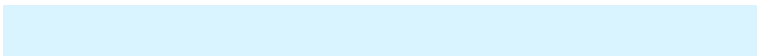


# Inverse Universe

The Inverse Universe completely reimagines the original color for something new.



65.0090, 0.2934, 0.3186



85.8470, 0.2894, 0.3163



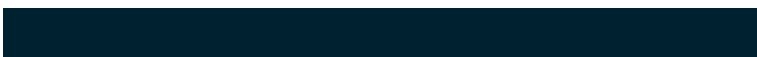
58.3024, 0.2930, 0.3023



14.7894, 0.2982, 0.3213



16.3994, 0.1946, 0.2207



1.2967, 0.1998, 0.2393



# Previews

## White Background



This preview shows how the Yxy color 62.8138, 0.3341, 0.3392 looks on a white background.

## Color Contrast Check

Large Text (above 18pt) WCAG AA × Fail

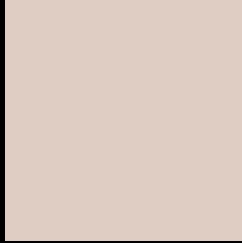
Any Text WCAG AA × Fail

Large Text (above 18pt) WCAG AAA × Fail

Any Text WCAG AAA × Fail



# Black Background



This preview shows how the Yxy color 62.8138, 0.3341, 0.3392 looks on a black background.

## Color Contrast Check

Large Text (above 18pt) WCAG AA ✓ Pass

Any Text WCAG AA ✓ Pass

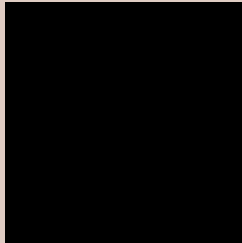
Large Text (above 18pt) WCAG AAA ✓ Pass

Any Text WCAG AAA ✓ Pass

If you want to check with other color combinations, try the [Color Contrast Checker](#).

**Yxy 62.8138, 0.3341, 0.3392**

## **Background**



This preview shows how black text looks on a background with the Yxy color 62.8138, 0.3341, 0.3392.



This preview shows how white text looks on a background with the Yxy color 62.8138, 0.3341, 0.3392.

# Color Blindness Simulation

Color vision deficiency is a very complex topic, and I could not describe the different causes any better than Wikipedia does, so if you want to learn more, you should check out their [article about color blindness](#).

## Dichromacy



### Original Color

62.8138, 0.3341, 0.3392

### Protanopia

62.9530, 0.3252, 0.3405

### Deuteranopia

62.9146, 0.3411, 0.3346



## Tritanopia

62.9518, 0.3205, 0.3115

# Trichromacy



## Original Color

62.8138, 0.3341, 0.3392

## Protanomaly

62.8798, 0.3284, 0.3405

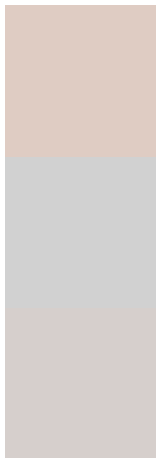
## Deuteranomaly

62.8846, 0.3385, 0.3357

## Tritanomaly

62.8521, 0.3255, 0.3213

# Monochromacy



## Original Color

62.8138, 0.3341, 0.3392

## Achromatopsia

63.7597, 0.3127, 0.3290

## Achromatomaly

63.2814, 0.3202, 0.3324

# CSS Examples

## Text

The CSS property to change the color of the text to Yxy 62.8138, 0.3341, 0.3392 is called "color". The color property can be set on classes, ids or directly on the HTML element.

This example shows how text in the color `rgb(223, 204, 195)` looks like.

```
.text, #text, p{  
  color:rgb(223, 204, 195)  
}
```

If you want to add a text shadow in that color use the text-shadow property, you can generate a text shadow directly with our [CSS Text Shadow Generator](#).

Here you see how black text with a 4 pixel rgb(223, 204, 195) colored shadow looks like.

```
.shadow{ text-shadow: 4px 4px 2px rgb(223, 204, 195) }
```

## Border

The CSS property to change the border of an element to Yxy 62.8138, 0.3341, 0.3392 is called "border". The border property can be set on classes, ids or directly on the HTML element.

This example shows the color as border, it can be applied via the CSS property "border" or "border-color".

```
.border, #border, table{ border:4px solid rgb(223, 204, 195) }
```

If only the border color should be changed use the property `border-color`.

```
.border{ border-color:rgb(223, 204, 195) }
```

If you want to add a box shadow in that color use:

Here you see how a box with a 4 pixel `rgb(223, 204, 195)` colored shadow looks like.

```
.boxshadow{ -moz-box-shadow:4px 4px 4px  
4px rgb(223, 204, 195); -webkit-box-  
shadow:4px 4px 4px 4px rgb(223, 204, 195);  
box-shadow:4px 4px 4px 4px rgb(223, 204,  
195) }
```



# Background

The CSS property to change the background color of an element to Yxy 62.8138, 0.3341, 0.3392 is called "background". The background property can be set on classes, ids or directly on the HTML element.

```
.background, #background, body{  
background: rgb(223, 204, 195) }
```

If only the background color should be changed can be used:

```
.background{ background-color: rgb(223,  
204, 195) }
```

This example shows the color as background, it is applied via the CSS property "background".

To optimize and compress your CSS code, you can use our [online CSS compressor and optimizer](#) based on csstidy. If you want to create a linear or radial gradient as background or border, check our [CSS Gradient Generator](#).

Hey! You found this booklet interesting? Support Converting Colors with the new Membership Option!

The pro membership hides all ads, plus gives you double the colors in the color bucket, and more awesome pro features!

**[Learn more, Memberships starting at \\$2.50/m!](#)**

**Follow me  
on Twitter!**

@ConvertingColor