

Converting Colors

$Yxy(62.8255, 0.3283, 0.3355)$

Have a look what the booklet for
Yxy(62.8255, 0.3283, 0.3355)
contains.

Yxy(63.0018, 0.3287, 0.3358)	3
<i>Conversions</i>	4
<i>Details</i>	6
<i>Harmonies</i>	12
<i>Previews</i>	24
<i>Color Blindness Simulation</i>	27
<i>CSS Examples</i>	30

Color

Yxy(63.0018, 0.3287, 0.3358)

Conversions

Conversions Part 1

Format	Color
Hex	DCCDC7
RGB	220, 205, 199
RGB Percent	86%, 80%, 78%
CMY	0.1370, 0.1961, 0.2196
CMYK	0.00, 0.07, 0.10, 0.14
HSL	17°, 23%, 82%
HSV	17°, 10%, 86%
XYZ	61.6697, 63.0018, 62.9455
YIQ	208.8010, 10.8660, 1.3140

Conversions

Conversions Part 2

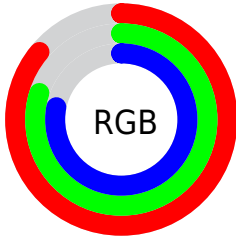
Format	Color
R _Y B	220, 207, 199
Decimal	14470599
CIE Lab	83.44, 4.23, 4.85
CIE LCh	83, 6.429, 48.909
Yxy	63.0018, 0.3287, 0.3358
Android (android.graphics.Color)	4292660679 (0xFFDCCDC7)
YUV	208.8010, -4.8319, 9.8215
Hunter-Lab	79.3737, -0.2176, 8.5430

Details

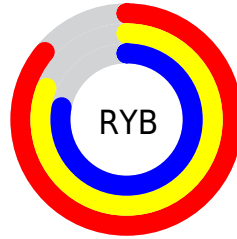
The Yxy color **63.0018, 0.3287, 0.3358** is a light color, and the websafe version is hex **CCCCCC**. A complement of this color would be **65.4494, 0.2980, 0.3221**, and the grayscale version is **63.6572, 0.3127, 0.3290**.

A 20% lighter version of the original color is **100.0000, 0.3127, 0.3290**, and **32.1769, 0.3329, 0.3380** is the 20% darker color. If you saturate the color by 10%, you get **54.8926, 0.3485, 0.3434**, and if you desaturate by 10%, it is **72.0237, 0.3121, 0.3287**.

Distribution



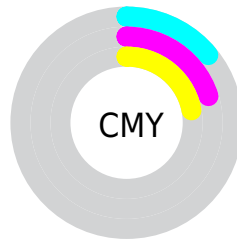
- Red (86%)
- Green (80%)
- Blue (78%)



- Red (86%)
- Yellow (81%)
- Blue (78%)



- Cyan (0%)
- Magenta (7%)
- Yellow (10%)
- Black (14%)



- Cyan (14%)
- Magenta (20%)
- Yellow (22%)

Brightness & Saturation Gradients

These gradients show how the Yxy color 63.0018, 0.3287, 0.3358 changes by changing the brightness by 10 percent. The first figure shows a shift by +10% for each color and the second figure -10%.

Similar to the brightness gradients but the following saturation gradients show a change of the Yxy color 63.0018, 0.3287, 0.3358 by changing the saturation by 10% instead.

■ 63.0018, 0.3287,
0.3358

■ 63.0018, 0.3287,
0.3358

435.5760, 0.3211,
0.3326

■ 45.8427, 0.3305,
0.3365

109.1721, 0.3260,
0.3347

■ 32.1217, 0.3328,
0.3374

138.9521, 0.3250,
0.3343

■ 21.4545, 0.3357,
0.3386

173.7078, 0.3241,
0.3339

■ 13.4566, 0.3396,
0.3402

213.8236, 0.3233,
0.3336

■ 7.7437, 0.3451,
0.3423

259.6839, 0.3227,
0.3333

■ 3.9314, 0.3534,
0.3454

311.6732, 0.3221,

■ 1.6353, 0.3674,

0.3330

370.1757, 0.3216,
0.3328

0.3503

0.3812, 0.5043,
0.4130

0.0000, 0.0000,
0.0000

63.0018, 0.3287,
0.3358

63.0018, 0.3287,
0.3358

54.8926, 0.3485,
0.3434

72.0237, 0.3121,
0.3287

47.6590, 0.3721,
0.3512

81.9773, 0.2981,
0.3222

41.2737, 0.3997,
0.3591

92.2289, 0.2917,
0.3262

35.7047, 0.4316,
0.3663

93.9655, 0.2918,
0.3289

■ 30.9179, 0.4671,
0.3720

■ 26.8767, 0.5049,
0.3752

■ 23.5413, 0.5422,
0.3746

■ 20.8677, 0.5751,
0.3695

■ 18.8006, 0.6009,
0.3606

Harmonies

Analogous

The Analogous color harmony consists of three colors that are next to each other on the color wheel.



63.0018, 0.3260, 0.3288



63.0018, 0.3287, 0.3358



63.0018, 0.3270, 0.3411

Triad

The Triadic color harmony groups three colors that are evenly spaced from another and form a triangle on the color wheel.



63.0018, 0.3287, 0.3358



63.0018, 0.3056, 0.3362



63.0018, 0.3039, 0.3151

Complementary

The Complementary color scheme is a pair of colors which are on the opposite of each other on the color wheel.



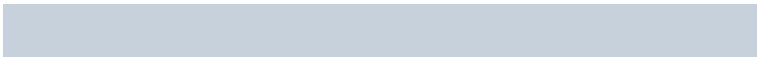
63.0018, 0.3287, 0.3358



65.4494, 0.2980, 0.3221

Split Complementary

Split-complementary colors differ from the complementary color scheme. The scheme consists of three colors, the original color and two neighbors of the complement color.



63.0018, 0.2986, 0.3169



63.0018, 0.3287, 0.3358



63.0018, 0.2996, 0.3290

Square

The Square scheme is like the rectangle color scheme, but the four colors are evenly spaced on the color wheel.



63.0018, 0.3287, 0.3358



63.0018, 0.3136, 0.3414



63.0018, 0.2970, 0.3219



63.0018, 0.3116, 0.3170

Rectangle

The Rectangle color scheme consists of four colors that form a rectangle on the color wheel.



63.0018, 0.3287, 0.3358



63.0018, 0.3237, 0.3429



63.0018, 0.2970, 0.3219



63.0018, 0.3018, 0.3153

Sweetspot

The Sweet Spot groups the original color and five complimentary colors.



63.0046, 0.3287, 0.3358



96.0716, 0.3175, 0.3311



60.9349, 0.3182, 0.3121



20.3428, 0.3188, 0.3317



0.0000, 0.0000, 0.0000



21.4041, 0.3127, 0.3290

Same Dimension

The Same Dimension uses a secret algorithm to generate beautiful new colors.



63.0046, 0.3287, 0.3358



86.1709, 0.3315, 0.3369



68.2057, 0.3274, 0.3475



13.6506, 0.3284, 0.3357



11.1462, 0.5992, 0.3624



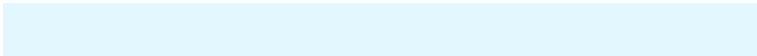
0.8672, 0.5668, 0.3881

Inverse Universe

The Inverse Universe completely reimagines the original color for something new.



65.4494, 0.2980, 0.3221



90.0861, 0.2956, 0.3209



60.2942, 0.2979, 0.3098



14.1722, 0.2982, 0.3222



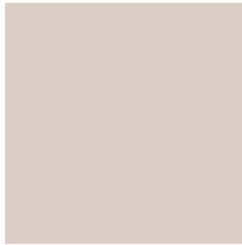
17.4896, 0.1984, 0.2343



1.2768, 0.2032, 0.2516

Previews

White Background



This preview shows how the Yxy color 63.0018, 0.3287, 0.3358 looks on a white background.

Color Contrast Check

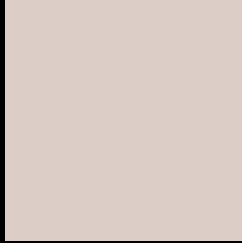
Large Text (above 18pt) WCAG AA × Fail

Any Text WCAG AA × Fail

Large Text (above 18pt) WCAG AAA × Fail

Any Text WCAG AAA × Fail

Black Background



This preview shows how the Yxy color 63.0018, 0.3287, 0.3358 looks on a black background.

Color Contrast Check

Large Text (above 18pt) WCAG AA ✓ Pass

Any Text WCAG AA ✓ Pass

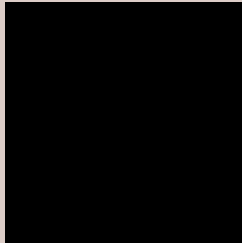
Large Text (above 18pt) WCAG AAA ✓ Pass

Any Text WCAG AAA ✓ Pass

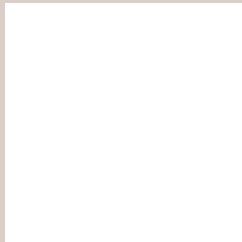
If you want to check with other color combinations, try the [Color Contrast Checker](#).

Yxy 63.0018, 0.3287, 0.3358

Background



This preview shows how black text looks on a background with the Yxy color 63.0018, 0.3287, 0.3358.



This preview shows how white text looks on a background with the Yxy color 63.0018, 0.3287, 0.3358.

Color Blindness Simulation

Color vision deficiency is a very complex topic, and I could not describe the different causes any better than Wikipedia does, so if you want to learn more, you should check out their [article about color blindness](#).

Dichromacy



Original Color

63.0018, 0.3287, 0.3358

Protanopia

62.9419, 0.3223, 0.3371

Deuteranopia

62.9323, 0.3372, 0.3302



Tritanopia

62.9910, 0.3174, 0.3114

Trichromacy



Original Color

63.0018, 0.3287, 0.3358

Protanomaly

62.9117, 0.3247, 0.3359

Deuteranomaly

62.7421, 0.3338, 0.3313

Tritanomaly

62.9446, 0.3216, 0.3201

Monochromacy



Original Color

63.0018, 0.3287, 0.3358

Achromatopsia

63.7597, 0.3127, 0.3290

Achromatomaly

63.6657, 0.3186, 0.3324

CSS Examples

Text

The CSS property to change the color of the text to Yxy 63.0018, 0.3287, 0.3358 is called "color". The color property can be set on classes, ids or directly on the HTML element.

This example shows how text in the color `rgb(220, 205, 199)` looks like.

```
.text, #text, p{  
    color:rgb(220, 205, 199)  
}
```

If you want to add a text shadow in that color use the text-shadow property, you can generate a text shadow directly with our [CSS Text Shadow Generator](#).

Here you see how black text with a 4 pixel rgb(220, 205, 199) colored shadow looks like.

```
.shadow{ text-shadow: 4px 4px 2px rgb(220, 205, 199) }
```

Border

The CSS property to change the border of an element to Yxy 63.0018, 0.3287, 0.3358 is called "border". The border property can be set on classes, ids or directly on the HTML element.

This example shows the color as border, it can be applied via the CSS property "border" or "border-color".

```
.border, #border, table{ border:4px solid rgb(220, 205, 199) }
```

If only the border color should be changed use the property `border-color`.

```
.border{ border-color:rgb(220, 205, 199) }
```

If you want to add a box shadow in that color use:

Here you see how a box with a 4 pixel `rgb(220, 205, 199)` colored shadow looks like.

```
.boxshadow{ -moz-box-shadow:4px 4px 4px  
4px rgb(220, 205, 199); -webkit-box-  
shadow:4px 4px 4px 4px rgb(220, 205, 199);  
box-shadow:4px 4px 4px 4px rgb(220, 205,  
199) }
```


Background

The CSS property to change the background color of an element to Yxy 63.0018, 0.3287, 0.3358 is called "background". The background property can be set on classes, ids or directly on the HTML element.

```
.background, #background, body{  
background: rgb(220, 205, 199) }
```

If only the background color should be changed can be used:

```
.background{ background-color: rgb(220,  
205, 199) }
```

This example shows the color as background, it is applied via the CSS property "background".

To optimize and compress your CSS code, you can use our [online CSS compressor and optimizer](#) based on csstidy. If you want to create a linear or radial gradient as background or border, check our [CSS Gradient Generator](#).

Hey! You found this booklet interesting? Support Converting Colors with the new Membership Option!

The pro membership hides all ads, plus gives you double the colors in the color bucket, and more awesome pro features!

[Learn more, Memberships starting at \\$2.50/m!](#)

**Follow me
on Twitter!**

@ConvertingColor