

Converting Colors

$Yxy(62.8394, 0.3387, 0.3324)$

Have a look what the booklet for
Yxy(62.8394, 0.3387, 0.3324)
contains.

Yxy(62.8394, 0.3387, 0.3324)	3
Conversions	4
Details	6
Harmonies	12
Previews	24
Color Blindness Simulation	27
CSS Examples	30

Color

Yxy(62.8394, 0.3387, 0.3324)

Conversions

Conversions Part 1

Format	Color
Hex	E7C9C6
RGB	231, 201, 198
RGB Percent	91%, 79%, 78%
CMY	0.0942, 0.2117, 0.2235
CMYK	0.00, 0.13, 0.14, 0.09
HSL	5°, 41%, 84%
HSV	5°, 14%, 91%
XYZ	64.0304, 62.8394, 62.1777
YIQ	209.6280, 18.8430, 5.4270

Conversions

Conversions Part 2

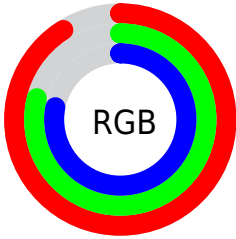
Format	Color
R _Y B	231, 201, 198
Decimal	15190470
CIE Lab	83.36, 10.05, 5.38
CIE LCh	83, 11.397, 28.156
Yxy	62.8394, 0.3387, 0.3324
Android (android.graphics.Color)	4293380550 (0xFFE7C9C6)
YUV	209.6280, -5.7326, 18.7432
Hunter-Lab	79.2713, 5.4563, 8.9848

Details

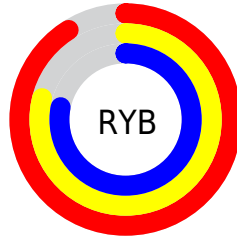
The Yxy color **62.8394, 0.3387, 0.3324** is a light color, and the websafe version is hex **FFCCCC**. A complement of this color would be **73.2442, 0.2909, 0.3256**, and the grayscale version is **64.2217, 0.3127, 0.3290**.

A 20% lighter version of the original color is **100.0000, 0.3127, 0.3290**, and **31.9950, 0.3454, 0.3334** is the 20% darker color. If you saturate the color by 10%, you get **52.7299, 0.3621, 0.3350**, and if you desaturate by 10%, it is **74.4540, 0.3197, 0.3300**.

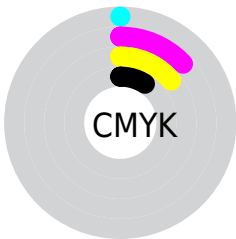
Distribution



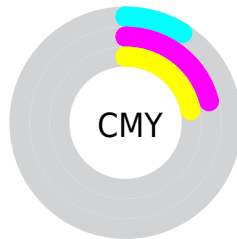
- Red (91%)
- Green (79%)
- Blue (78%)



- Red (91%)
- Yellow (79%)
- Blue (78%)



- Cyan (0%)
- Magenta (13%)
- Yellow (14%)
- Black (9%)





- Cyan (9%)
- Magenta (21%)
- Yellow (22%)

Brightness & Saturation Gradients


These gradients show how the Yxy color 62.8394, 0.3387, 0.3324 changes by changing the brightness by 10 percent. The first figure shows a shift by +10% for each color and the second figure -10%.

Similar to the brightness gradients but the following saturation gradients show a change of the Yxy color 62.8394, 0.3387, 0.3324 by changing the saturation by 10% instead.


 62.8394, 0.3387,
0.3324

 62.8394, 0.3387,
0.3324


434.9864, 0.3263,
0.3309

 45.7113, 0.3416,
0.3327


108.9378, 0.3343,
0.3319

 32.0181, 0.3453,
0.3331


138.6769, 0.3326,
0.3317

 21.3753, 0.3501,
0.3336


173.3884, 0.3312,
0.3315

 13.3986, 0.3565,
0.3341


213.4567, 0.3299,
0.3314

 7.7036, 0.3655,
0.3348

259.2663, 0.3289,
0.3312

 3.9059, 0.3791,
0.3356

311.2015, 0.3279,

 1.6211, 0.4021,

0.3311

369.6467, 0.3270,
0.3310

0.3364

0.3717, 0.5991,
0.3721

0.0000, 0.0000,
0.0000

62.8394, 0.3387,
0.3324

62.8394, 0.3387,
0.3324

52.7299, 0.3621,
0.3350

74.4540, 0.3197,
0.3300

44.0558, 0.3909,
0.3376

87.6230, 0.3043,
0.3278

36.7546, 0.4255,
0.3401

95.7264, 0.2981,
0.3290

30.7558, 0.4660,
0.3421

■ 25.9826, 0.5108,
0.3431

■ 22.3504, 0.5562,
0.3427

■ 19.7633, 0.5960,
0.3405

■ 18.1099, 0.6241,
0.3366

■ 17.5268, 0.6342,
0.3346

Harmonies

Analogous

The Analogous color harmony consists of three colors that are next to each other on the color wheel.



62.8394, 0.3292, 0.3201



62.8394, 0.3387, 0.3324



62.8394, 0.3411, 0.3442

Triad

The Triadic color harmony groups three colors that are evenly spaced from another and form a triangle on the color wheel.



62.8394, 0.3387, 0.3324



62.8394, 0.3097, 0.3490



62.8394, 0.2900, 0.3059

Complementary

The Complementary color scheme is a pair of colors which are on the opposite of each other on the color wheel.



62.8394, 0.3387, 0.3324



73.2442, 0.2909, 0.3256

Split Complementary

Split-complementary colors differ from the complementary color scheme. The scheme consists of three colors, the original color and two neighbors of the complement color.



62.8394, 0.2851, 0.3130



62.8394, 0.3387, 0.3324



62.8394, 0.2963, 0.3380

Square

The Square scheme is like the rectangle color scheme, but the four colors are evenly spaced on the color wheel.



62.8394, 0.3387, 0.3324



62.8394, 0.3241, 0.3542



62.8394, 0.2874, 0.3247



62.8394, 0.3010, 0.3050

Rectangle

The Rectangle color scheme consists of four colors that form a rectangle on the color wheel.



62.8394, 0.3387, 0.3324



62.8394, 0.3383, 0.3502



62.8394, 0.2874, 0.3247



62.8394, 0.2876, 0.3076

Sweetspot

The Sweet Spot groups the original color and five complimentary colors.



62.8422, 0.3387, 0.3324



93.5891, 0.3193, 0.3299



62.9877, 0.3164, 0.2966



19.7814, 0.3206, 0.3301



0.0000, 0.0000, 0.0000



21.4041, 0.3127, 0.3290

Same Dimension

The Same Dimension uses a secret algorithm to generate beautiful new colors.



62.8422, 0.3387, 0.3324



74.9089, 0.3448, 0.3331



70.8129, 0.3362, 0.3500



14.5786, 0.3290, 0.3312



9.9042, 0.6328, 0.3358



0.8050, 0.6152, 0.3498

Inverse Universe

The Inverse Universe completely reimagines the original color for something new.



73.2442, 0.2909, 0.3256



90.1833, 0.2868, 0.3249



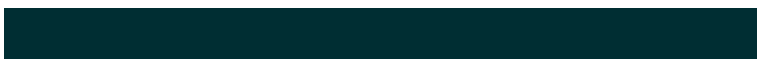
64.7320, 0.2903, 0.3071



16.0993, 0.2982, 0.3268



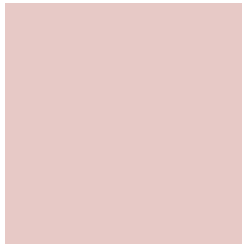
29.1408, 0.2167, 0.3002



2.2196, 0.2180, 0.3047

Previews

White Background



This preview shows how the Yxy color 62.8394, 0.3387, 0.3324 looks on a white background.

Color Contrast Check

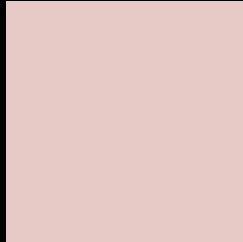
Large Text (above 18pt) WCAG AA × Fail

Any Text WCAG AA × Fail

Large Text (above 18pt) WCAG AAA × Fail

Any Text WCAG AAA × Fail

Black Background



This preview shows how the Yxy color 62.8394, 0.3387, 0.3324 looks on a black background.

Color Contrast Check

Large Text (above 18pt) WCAG AA ✓ Pass

Any Text WCAG AA ✓ Pass

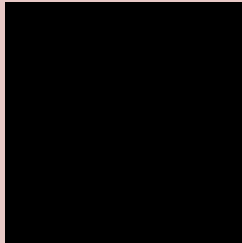
Large Text (above 18pt) WCAG AAA ✓ Pass

Any Text WCAG AAA ✓ Pass

If you want to check with other color combinations, try the [Color Contrast Checker](#).

Yxy 62.8394, 0.3387, 0.3324

Background



This preview shows how black text looks on a background with the Yxy color 62.8394, 0.3387, 0.3324.

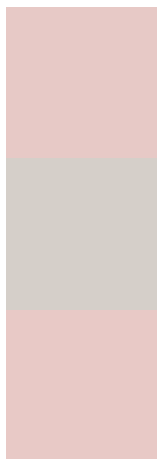


This preview shows how white text looks on a background with the Yxy color 62.8394, 0.3387, 0.3324.

Color Blindness Simulation

Color vision deficiency is a very complex topic, and I could not describe the different causes any better than Wikipedia does, so if you want to learn more, you should check out their [article about color blindness](#).

Dichromacy



Original Color

62.8394, 0.3387, 0.3324

Protanopia

62.9888, 0.3215, 0.3359

Deuteranopia

63.0063, 0.3395, 0.3324



Tritanopia

63.0255, 0.3284, 0.3128

Trichromacy



Original Color

62.8394, 0.3387, 0.3324

Protanomaly

63.0484, 0.3279, 0.3347

Deuteranomaly

63.0063, 0.3395, 0.3324

Tritanomaly

63.0184, 0.3320, 0.3203

Monochromacy



Original Color

62.8394, 0.3387, 0.3324

Achromatopsia

64.4480, 0.3127, 0.3290

Achromatomaly

63.9873, 0.3218, 0.3302

CSS Examples

Text

The CSS property to change the color of the text to Yxy 62.8394, 0.3387, 0.3324 is called "color". The color property can be set on classes, ids or directly on the HTML element.

This example shows how text in the color `rgb(231, 201, 198)` looks like.

```
.text, #text, p{  
    color:rgb(231, 201, 198)  
}
```

If you want to add a text shadow in that color use the text-shadow property, you can generate a text shadow directly with our [CSS Text Shadow Generator](#).

Here you see how black text with a 4 pixel rgb(231, 201, 198) colored shadow looks like.

```
.shadow{ text-shadow: 4px 4px 2px rgb(231, 201, 198) }
```

Border

The CSS property to change the border of an element to Yxy 62.8394, 0.3387, 0.3324 is called "border". The border property can be set on classes, ids or directly on the HTML element.

This example shows the color as border, it can be applied via the CSS property "border" or "border-color".

```
.border, #border, table{ border:4px solid rgb(231, 201, 198) }
```

If only the border color should be changed use the property `border-color`.

```
.border{ border-color:rgb(231, 201, 198) }
```

If you want to add a box shadow in that color use:

Here you see how a box with a 4 pixel `rgb(231, 201, 198)` colored shadow looks like.

```
.boxshadow{ -moz-box-shadow:4px 4px 4px  
4px rgb(231, 201, 198); -webkit-box-  
shadow:4px 4px 4px 4px rgb(231, 201, 198);  
box-shadow:4px 4px 4px 4px rgb(231, 201,  
198) }
```


Background

The CSS property to change the background color of an element to Yxy 62.8394, 0.3387, 0.3324 is called "background". The background property can be set on classes, ids or directly on the HTML element.

```
.background, #background, body{  
background: rgb(231, 201, 198) }
```

If only the background color should be changed can be used:

```
.background{ background-color: rgb(231,  
201, 198) }
```

This example shows the color as background, it is applied via the CSS property "background".

To optimize and compress your CSS code, you can use our [online CSS compressor and optimizer](#) based on csstidy. If you want to create a linear or radial gradient as background or border, check our [CSS Gradient Generator](#).

Hey! You found this booklet interesting? Support Converting Colors with the new Membership Option!

The pro membership hides all ads, plus gives you double the colors in the color bucket, and more awesome pro features!

[Learn more, Memberships starting at \\$2.50/m!](#)

**Follow me
on Twitter!**

@ConvertingColor