

Converting Colors

$Yxy(62.8916, 0.3217, 0.3185)$

Have a look what the booklet for
Yxy(62.8916, 0.3217, 0.3185)
contains.

Yxy(62.6825, 0.3217, 0.3179)	3
<i>Conversions</i>	4
<i>Details</i>	6
<i>Harmonies</i>	12
<i>Previews</i>	24
<i>Color Blindness Simulation</i>	27
<i>CSS Examples</i>	30

Color

Yxy(62.6825, 0.3217, 0.3179)

Conversions

Conversions Part 1

Format	Color
Hex	DFCAD4
RGB	223, 202, 212
RGB Percent	87%, 79%, 83%
CMY	0.1256, 0.2078, 0.1685
CMYK	0.00, 0.09, 0.05, 0.13
HSL	331°, 25%, 83%
HSV	331°, 9%, 87%
XYZ	63.4318, 62.6825, 71.0625
YIQ	209.4190, 9.3060, 7.5620

Conversions

Conversions Part 2

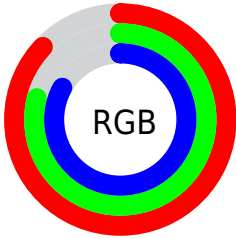
Format	Color
R _Y B	223, 202, 212
Decimal	14666452
CIE Lab	83.28, 9.03, -2.32
CIE LCh	83, 9.328, 345.604
Yxy	62.6825, 0.3217, 0.3179
Android (android.graphics.Color)	4292856532 (0xFFDFCAD4)
YUV	209.4190, 1.2724, 11.9105
Hunter-Lab	79.1723, 4.4603, 2.2038

Details

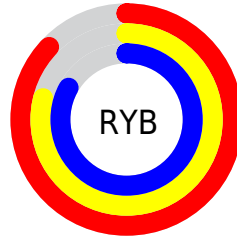
The Yxy color **62.6825, 0.3217, 0.3179** is a light color, and the websafe version is hex **CCCCCC**. A complement of this color would be **70.1200, 0.3046, 0.3404**, and the grayscale version is **64.0359, 0.3127, 0.3290**.

A 20% lighter version of the original color is **100.0000, 0.3127, 0.3290**, and **31.9390, 0.3247, 0.3159** is the 20% darker color. If you saturate the color by 10%, you get **52.3995, 0.3332, 0.3055**, and if you desaturate by 10%, it is **74.5251, 0.3122, 0.3297**.

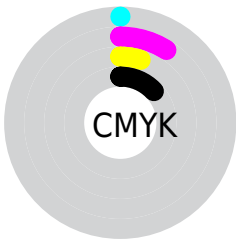
Distribution



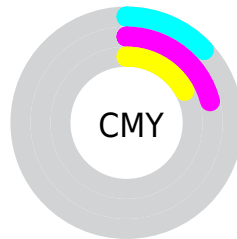
- Red (87%)
- Green (79%)
- Blue (83%)



- Red (87%)
- Yellow (79%)
- Blue (83%)



- Cyan (0%)
- Magenta (9%)
- Yellow (5%)
- Black (13%)



- Cyan (13%)
- Magenta (21%)
- Yellow (17%)

Brightness & Saturation Gradients

These gradients show how the Yxy color 62.6825, 0.3217, 0.3179 changes by changing the brightness by 10 percent. The first figure shows a shift by +10% for each color and the second figure -10%.

Similar to the brightness gradients but the following saturation gradients show a change of the Yxy color 62.6825, 0.3217, 0.3179 by changing the saturation by 10% instead.

62.6825, 0.3217,
0.3179

62.6825, 0.3217,
0.3179

434.4163, 0.3175,
0.3231

45.5844, 0.3227,
0.3167

108.7113, 0.3202,
0.3197

31.9180, 0.3239,
0.3152

138.4108, 0.3196,
0.3204

21.2989, 0.3255,
0.3132

173.0796, 0.3191,
0.3211

13.3426, 0.3277,
0.3106

213.1021, 0.3187,
0.3216

7.6649, 0.3306,
0.3070

258.8626, 0.3183,
0.3220

3.8813, 0.3351,
0.3016

310.7455, 0.3180,

1.6074, 0.3424,

0.3225

369.1353, 0.3177,
0.3228

0.2928

0.3626, 0.3807,
0.2442

0.0000, 0.0000,
0.0000

62.6825, 0.3217,
0.3179

62.6825, 0.3217,
0.3179

52.3995, 0.3332,
0.3055

74.5251, 0.3122,
0.3297

43.6024, 0.3470,
0.2926

87.9806, 0.3044,
0.3407

36.2240, 0.3635,
0.2798

93.9156, 0.2978,
0.3371

30.1883, 0.3828,
0.2678

94.4234, 0.2934,
0.3289

■ 25.4125, 0.4049,
0.2576

■ 21.8044, 0.4293,
0.2503

■ 19.2589, 0.4553,
0.2473

■ 17.6517, 0.4815,
0.2495

■ 16.7799, 0.5065,
0.2567

Harmonies

Analogous

The Analogous color harmony consists of three colors that are next to each other on the color wheel.



62.6825, 0.3098, 0.3112



62.6825, 0.3217, 0.3179



62.6825, 0.3313, 0.3275

Triad

The Triadic color harmony groups three colors that are evenly spaced from another and form a triangle on the color wheel.



62.6825, 0.3217, 0.3179



62.6825, 0.3265, 0.3496



62.6825, 0.2901, 0.3196

Complementary

The Complementary color scheme is a pair of colors which are on the opposite of each other on the color wheel.



62.6825, 0.3217, 0.3179



70.1200, 0.3046, 0.3404

Split Complementary

Split-complementary colors differ from the complementary color scheme. The scheme consists of three colors, the original color and two neighbors of the complement color.



62.6825, 0.2944, 0.3301



62.6825, 0.3217, 0.3179



62.6825, 0.3153, 0.3477

Square

The Square scheme is like the rectangle color scheme, but the four colors are evenly spaced on the color wheel.



62.6825, 0.3217, 0.3179



62.6825, 0.3341, 0.3459



62.6825, 0.3036, 0.3405



62.6825, 0.2917, 0.3120

Rectangle

The Rectangle color scheme consists of four colors that form a rectangle on the color wheel.



62.6825, 0.3217, 0.3179



62.6825, 0.3350, 0.3344



62.6825, 0.3036, 0.3405



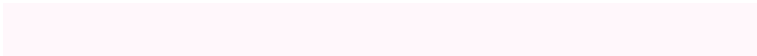
62.6825, 0.2909, 0.3229

Sweetspot

The Sweet Spot groups the original color and five complimentary colors.



62.6852, 0.3217, 0.3179



94.9613, 0.3154, 0.3255



61.6953, 0.3062, 0.3055



20.0445, 0.3162, 0.3246



0.0000, 0.0000, 0.0000



21.4041, 0.3127, 0.3290

Same Dimension

The Same Dimension uses a secret algorithm to generate beautiful new colors.



62.6852, 0.3217, 0.3179



82.4834, 0.3235, 0.3159



62.3592, 0.3291, 0.3294



13.8091, 0.3217, 0.3178



9.8660, 0.5045, 0.2553



0.7019, 0.4687, 0.2356

Inverse Universe

The Inverse Universe completely reimagines the original color for something new.



62.6852, 0.3217, 0.3179



82.4834, 0.3235, 0.3159



70.4581, 0.2983, 0.3286



13.8091, 0.3217, 0.3178



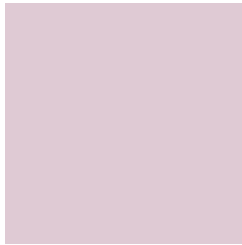
9.8660, 0.5045, 0.2553



0.7019, 0.4687, 0.2356

Previews

White Background



This preview shows how the Yxy color 62.6825, 0.3217, 0.3179 looks on a white background.

Color Contrast Check

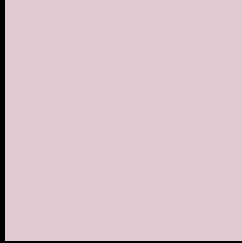
Large Text (above 18pt) WCAG AA × Fail

Any Text WCAG AA × Fail

Large Text (above 18pt) WCAG AAA × Fail

Any Text WCAG AAA × Fail

Black Background



This preview shows how the Yxy color 62.6825, 0.3217, 0.3179 looks on a black background.

Color Contrast Check

Large Text (above 18pt) WCAG AA ✓ Pass

Any Text WCAG AA ✓ Pass

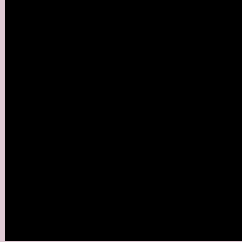
Large Text (above 18pt) WCAG AAA ✓ Pass

Any Text WCAG AAA ✓ Pass

If you want to check with other color combinations, try the [Color Contrast Checker](#).

Yxy 62.6825, 0.3217, 0.3179

Background



This preview shows how black text looks on a background with the Yxy color 62.6825, 0.3217, 0.3179.



This preview shows how white text looks on a background with the Yxy color 62.6825, 0.3217, 0.3179.

Color Blindness Simulation

Color vision deficiency is a very complex topic, and I could not describe the different causes any better than Wikipedia does, so if you want to learn more, you should check out their [article about color blindness](#).

Dichromacy



Original Color

62.6825, 0.3217, 0.3179

Protanopia

62.6042, 0.3087, 0.3187

Deuteranopia

62.5343, 0.3234, 0.3169



Tritanopia

62.6303, 0.3189, 0.3114

Trichromacy



Original Color

62.6825, 0.3217, 0.3179

Protanomaly

62.8138, 0.3132, 0.3188

Deuteranomaly

62.3740, 0.3226, 0.3168

Tritanomaly

62.5269, 0.3204, 0.3136

Monochromacy



Original Color

62.6825, 0.3217, 0.3179

Achromatopsia

63.7597, 0.3127, 0.3290

Achromatomaly

63.0919, 0.3160, 0.3245

CSS Examples

Text

The CSS property to change the color of the text to Yxy 62.6825, 0.3217, 0.3179 is called "color". The color property can be set on classes, ids or directly on the HTML element.

This example shows how text in the color `rgb(223, 202, 212)` looks like.

```
.text, #text, p{  
    color:rgb(223, 202, 212)  
}
```

If you want to add a text shadow in that color use the text-shadow property, you can generate a text shadow directly with our [CSS Text Shadow Generator](#).

Here you see how black text with a 4 pixel rgb(223, 202, 212) colored shadow looks like.

```
.shadow{ text-shadow: 4px 4px 2px rgb(223, 202, 212) }
```

Border

The CSS property to change the border of an element to Yxy 62.6825, 0.3217, 0.3179 is called "border". The border property can be set on classes, ids or directly on the HTML element.

This example shows the color as border, it can be applied via the CSS property "border" or "border-color".

```
.border, #border, table{ border:4px solid rgb(223, 202, 212) }
```

If only the border color should be changed use the property border-color.

```
.border{ border-color:rgb(223, 202, 212) }
```

If you want to add a box shadow in that color use:

Here you see how a box with a 4 pixel rgb(223, 202, 212) colored shadow looks like.

```
.boxshadow{ -moz-box-shadow:4px 4px 4px  
4px rgb(223, 202, 212); -webkit-box-  
shadow:4px 4px 4px 4px rgb(223, 202, 212);  
box-shadow:4px 4px 4px 4px rgb(223, 202,  
212) }
```


Background

The CSS property to change the background color of an element to Yxy 62.6825, 0.3217, 0.3179 is called "background". The background property can be set on classes, ids or directly on the HTML element.

```
.background, #background, body{  
background: rgb(223, 202, 212) }
```

If only the background color should be changed can be used:

```
.background{ background-color: rgb(223,  
202, 212) }
```

This example shows the color as background, it is applied via the CSS property "background".

To optimize and compress your CSS code, you can use our [online CSS compressor and optimizer](#) based on csstidy. If you want to create a linear or radial gradient as background or border, check our [CSS Gradient Generator](#).

Hey! You found this booklet interesting? Support Converting Colors with the new Membership Option!

The pro membership hides all ads, plus gives you double the colors in the color bucket, and more awesome pro features!

[Learn more, Memberships starting at \\$2.50/m!](#)

**Follow me
on Twitter!**

@ConvertingColor